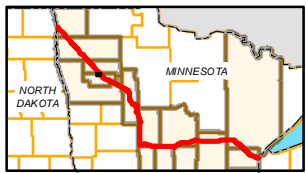
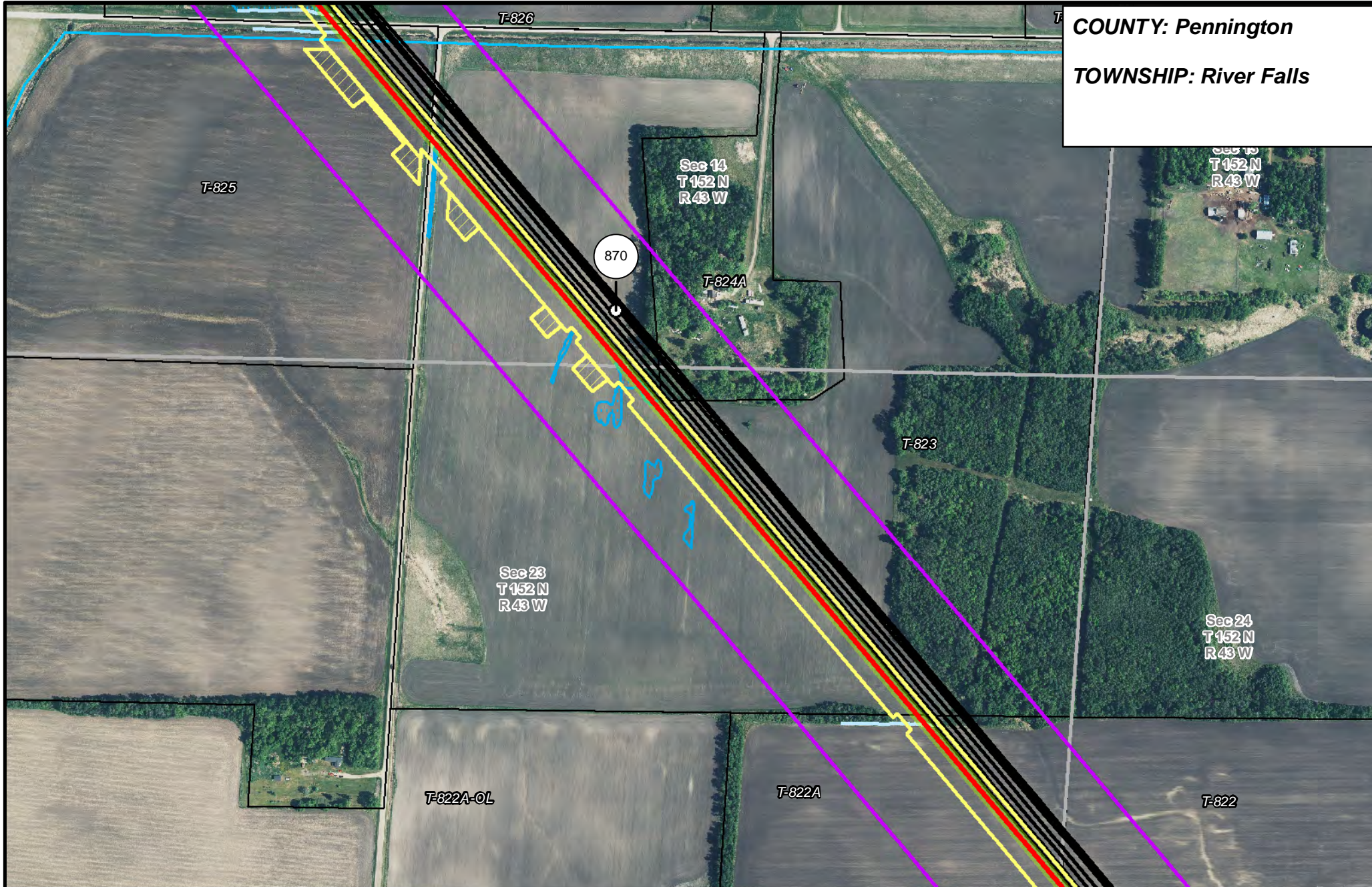


**COUNTY:** Pennington  
**TOWNSHIP:** River Falls



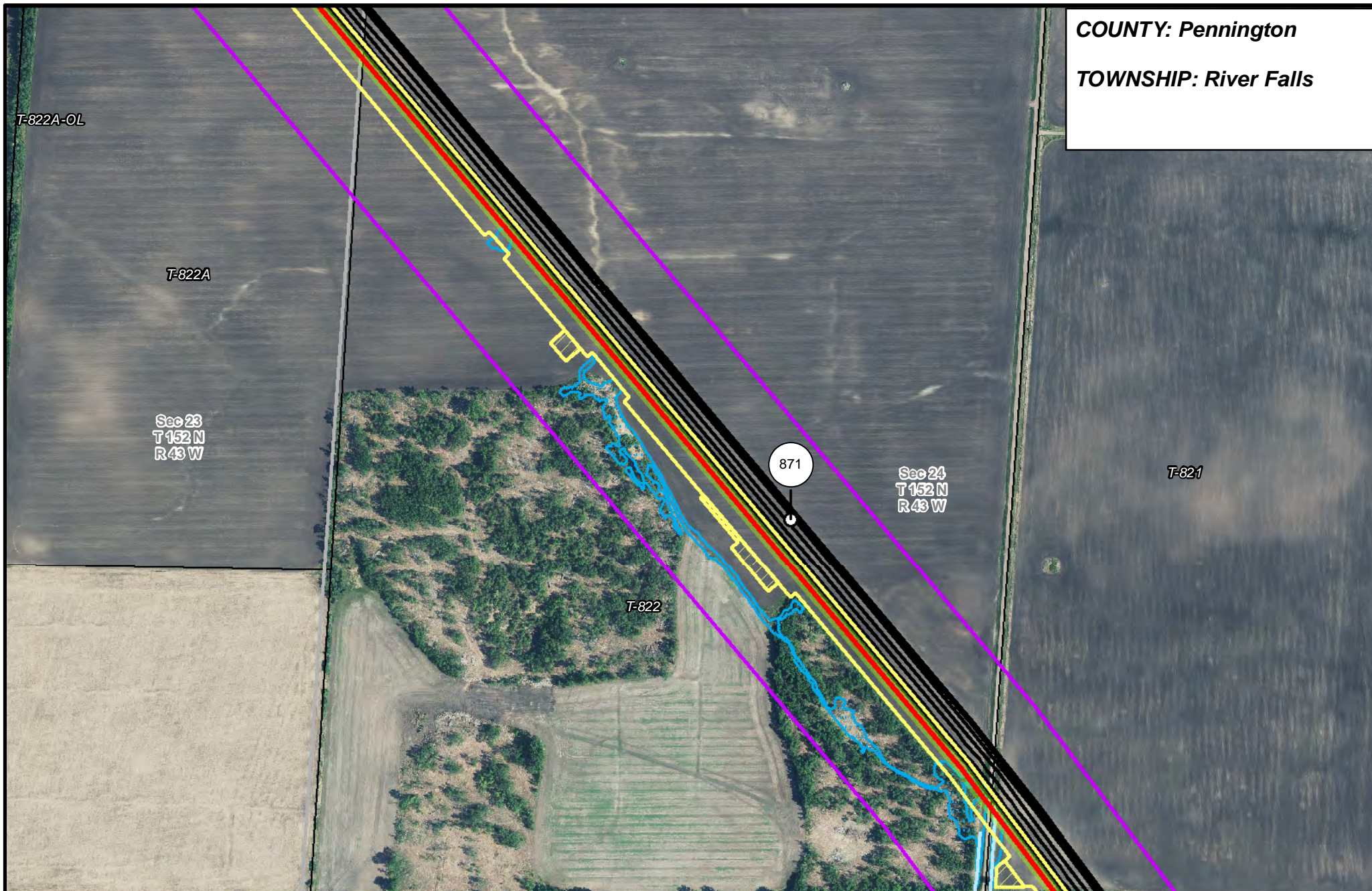
- |                       |                                |                      |                        |
|-----------------------|--------------------------------|----------------------|------------------------|
| PUC Designated Route  | Mile Post                      | Surveyed Waterbodies | Tract Boundary         |
| ROW                   | Temporary Workspace            | ESA                  | MN Section Boundary    |
| Line 3R Pipeline      | Additional Temporary Workspace | Surveyed Wetlands    | Township/City Boundary |
| Valve Location        | Existing Enbridge Pipelines    | NWI Wetlands         | County Boundary        |
| Enbridge Pump Station | Existing Electric Transmission |                      |                        |
|                       | Existing Third Party Pipelines |                      |                        |



**LINE 3 REPLACEMENT  
PIPELINE ROUTE**

DRAWN: MLB CHECKED: --  
DATE: August 31, 2018 SCALE: 1:5,000  
Map 87 of 378

**COUNTY:** Pennington  
**TOWNSHIP:** River Falls



T-822A-OL

T-822A

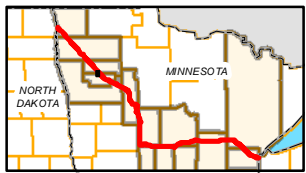
Sec 23  
T 152 N  
R 43 W

871

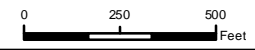
Sec 24  
T 152 N  
R 43 W

T-821

T-822



- |                       |                                |                      |                        |
|-----------------------|--------------------------------|----------------------|------------------------|
| PUC Designated Route  | Mile Post                      | Surveyed Waterbodies | Tract Boundary         |
| ROW                   | Temporary Workspace            | ESA                  | MN Section Boundary    |
| Line 3R Pipeline      | Additional Temporary Workspace | Surveyed Wetlands    | Township/City Boundary |
| Valve Location        | Existing Enbridge Pipelines    | NWI Wetlands         | County Boundary        |
| Enbridge Pump Station | Existing Electric Transmission |                      |                        |
|                       | Existing Third Party Pipelines |                      |                        |

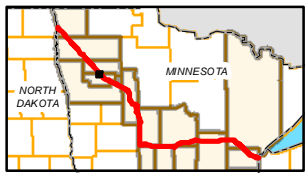


**LINE 3 REPLACEMENT  
PIPELINE ROUTE**

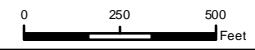
DRAWN: MLB CHECKED: --  
 DATE: August 31, 2018 SCALE: 1:5,000  
 Map 88 of 378

**COUNTY: Pennington & Red Lake**

**TOWNSHIP: River Falls, River & Emardville**



- |                       |                                |                      |                        |
|-----------------------|--------------------------------|----------------------|------------------------|
| PUC Designated Route  | Mile Post                      | Surveyed Waterbodies | Tract Boundary         |
| ROW                   | Temporary Workspace            | ESA                  | MN Section Boundary    |
| Line 3R Pipeline      | Additional Temporary Workspace | Surveyed Wetlands    | Township/City Boundary |
| Valve Location        | Existing Enbridge Pipelines    | NWI Wetlands         | County Boundary        |
| Enbridge Pump Station | Existing Electric Transmission |                      |                        |
|                       | Existing Third Party Pipelines |                      |                        |



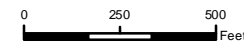
**LINE 3 REPLACEMENT PIPELINE ROUTE**

DRAWN: MLB CHECKED: --  
 DATE: August 31, 2018 SCALE: 1:5,000  
 Map 89 of 378

**COUNTY:** Red Lake  
**TOWNSHIP:** Emardville



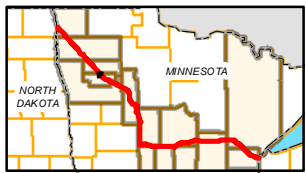
- |                       |                                |                      |                        |
|-----------------------|--------------------------------|----------------------|------------------------|
| PUC Designated Route  | Mile Post                      | Surveyed Waterbodies | Tract Boundary         |
| ROW                   | Temporary Workspace            | ESA                  | MN Section Boundary    |
| Line 3R Pipeline      | Additional Temporary Workspace | Surveyed Wetlands    | Township/City Boundary |
| Valve Location        | Existing Enbridge Pipelines    | NWI Wetlands         | County Boundary        |
| Enbridge Pump Station | Existing Electric Transmission |                      |                        |
|                       | Existing Third Party Pipelines |                      |                        |



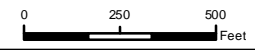
**LINE 3 REPLACEMENT  
 PIPELINE ROUTE**

DRAWN: MLB CHECKED: --  
 DATE: August 31, 2018 SCALE: 1:5,000  
 Map 90 of 378

**COUNTY:** Red Lake  
**TOWNSHIP:** Emardville



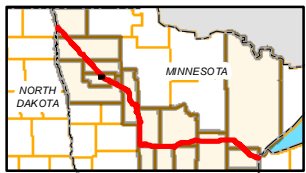
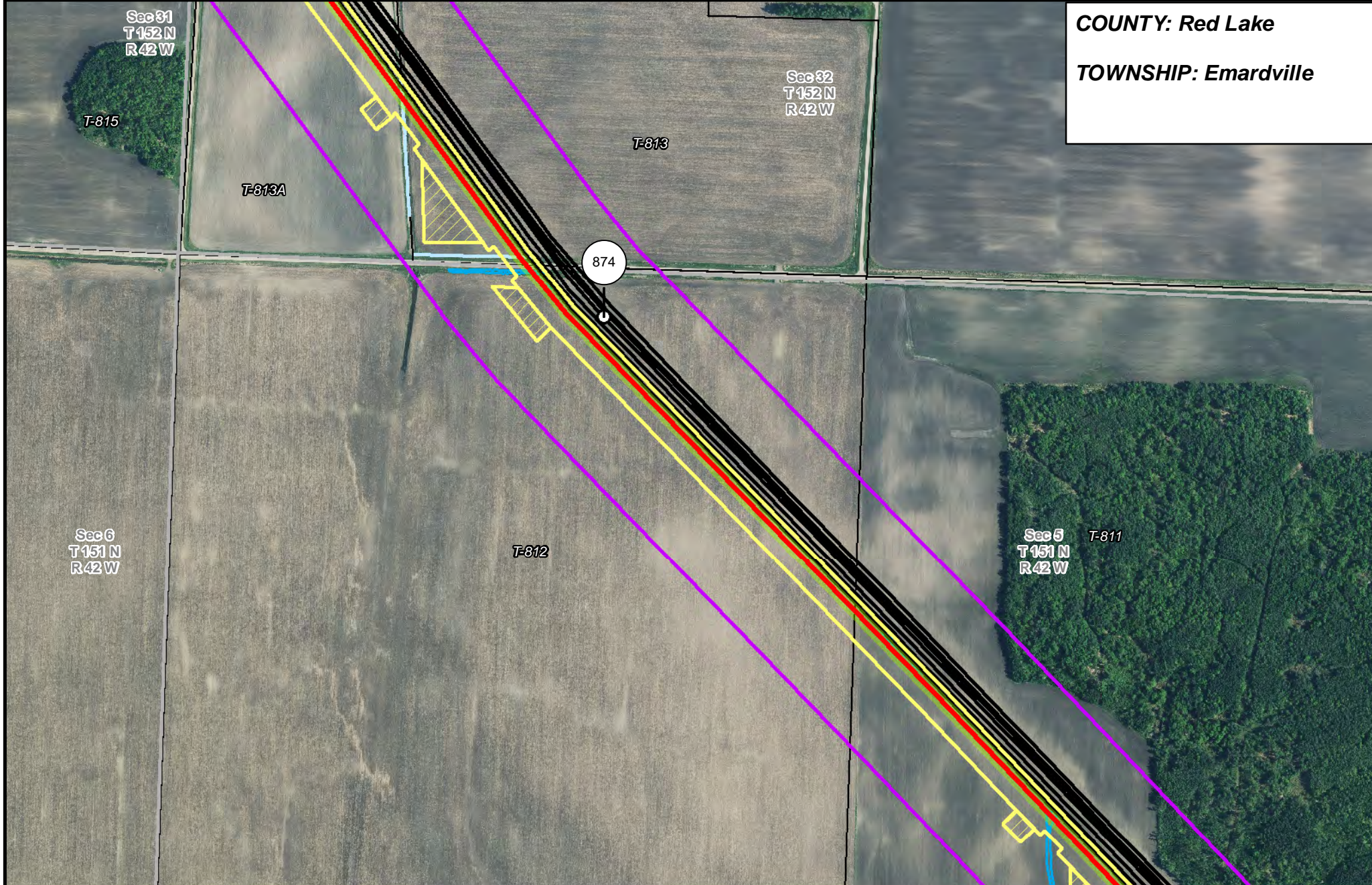
- |                       |                                |                      |                        |
|-----------------------|--------------------------------|----------------------|------------------------|
| PUC Designated Route  | Mile Post                      | Surveyed Waterbodies | Tract Boundary         |
| ROW                   | Temporary Workspace            | ESA                  | MN Section Boundary    |
| Line 3R Pipeline      | Additional Temporary Workspace | Surveyed Wetlands    | Township/City Boundary |
| Valve Location        | Existing Enbridge Pipelines    | NWI Wetlands         | County Boundary        |
| Enbridge Pump Station | Existing Electric Transmission |                      |                        |
|                       | Existing Third Party Pipelines |                      |                        |



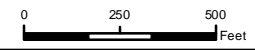
**LINE 3 REPLACEMENT PIPELINE ROUTE**

DRAWN: MLB CHECKED: --  
 DATE: August 31, 2018 SCALE: 1:5,000  
 Map 91 of 378

**COUNTY: Red Lake**  
**TOWNSHIP: Emardville**



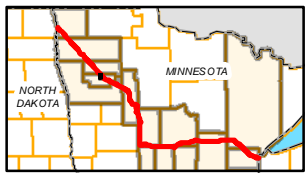
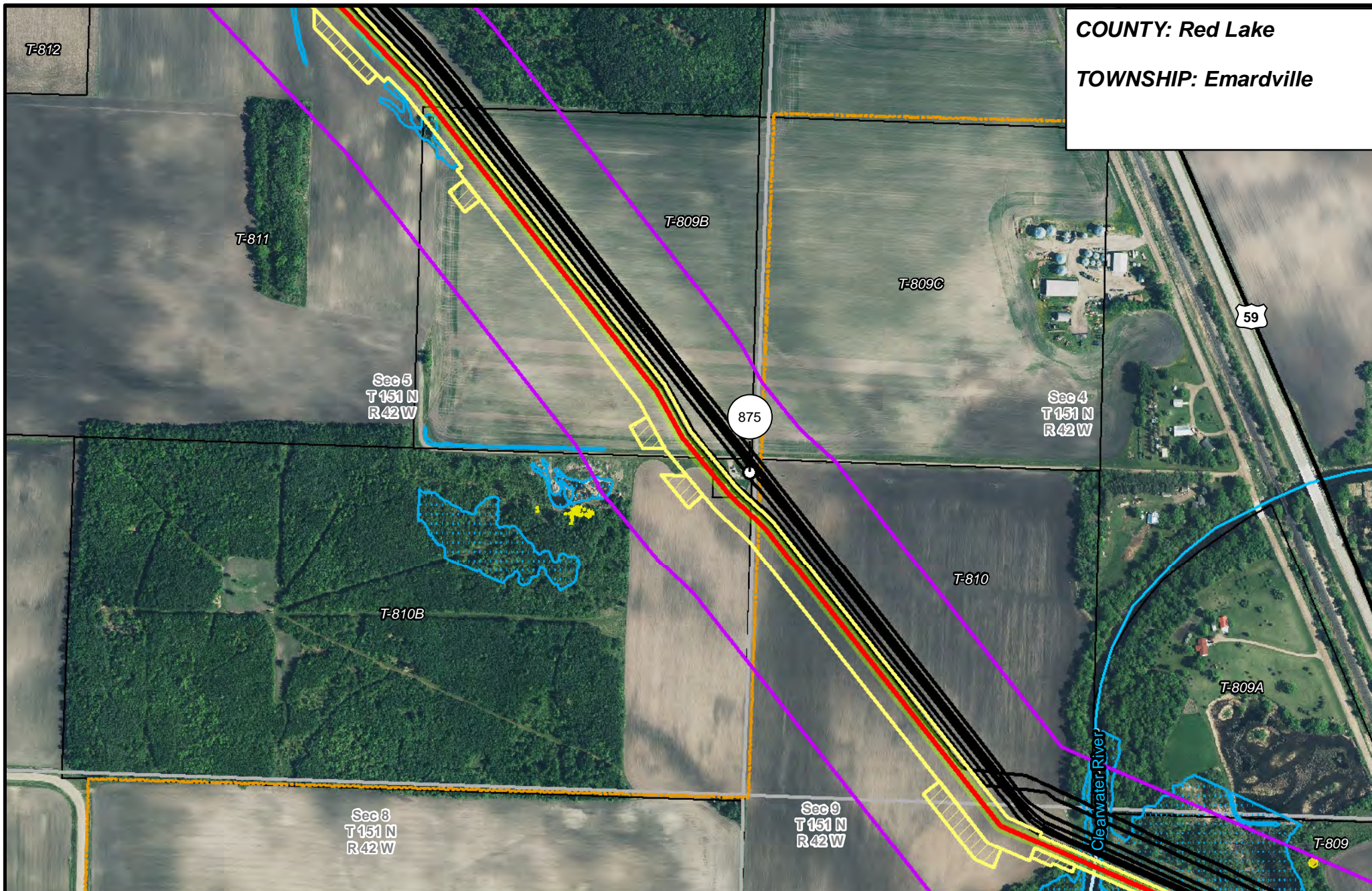
- |                       |                                |                      |                        |
|-----------------------|--------------------------------|----------------------|------------------------|
| PUC Designated Route  | Mile Post                      | Surveyed Waterbodies | Tract Boundary         |
| ROW                   | Temporary Workspace            | ESA                  | MN Section Boundary    |
| Line 3R Pipeline      | Additional Temporary Workspace | Surveyed Wetlands    | Township/City Boundary |
| Valve Location        | Existing Enbridge Pipelines    | NWI Wetlands         | County Boundary        |
| Enbridge Pump Station | Existing Electric Transmission |                      |                        |
|                       | Existing Third Party Pipelines |                      |                        |



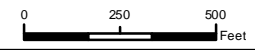
**LINE 3 REPLACEMENT PIPELINE ROUTE**

DRAWN: MLB CHECKED: --  
 DATE: August 31, 2018 SCALE: 1:5,000  
 Map 92 of 378

**COUNTY: Red Lake**  
**TOWNSHIP: Emarville**



- |                       |                                |                      |                        |
|-----------------------|--------------------------------|----------------------|------------------------|
| PUC Designated Route  | Mile Post                      | Surveyed Waterbodies | Tract Boundary         |
| ROW                   | Temporary Workspace            | ESA                  | MN Section Boundary    |
| Line 3R Pipeline      | Additional Temporary Workspace | Surveyed Wetlands    | Township/City Boundary |
| Valve Location        | Existing Enbridge Pipelines    | NWI Wetlands         | County Boundary        |
| Enbridge Pump Station | Existing Electric Transmission |                      |                        |
|                       | Existing Third Party Pipelines |                      |                        |

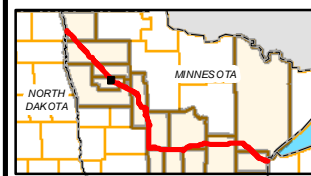
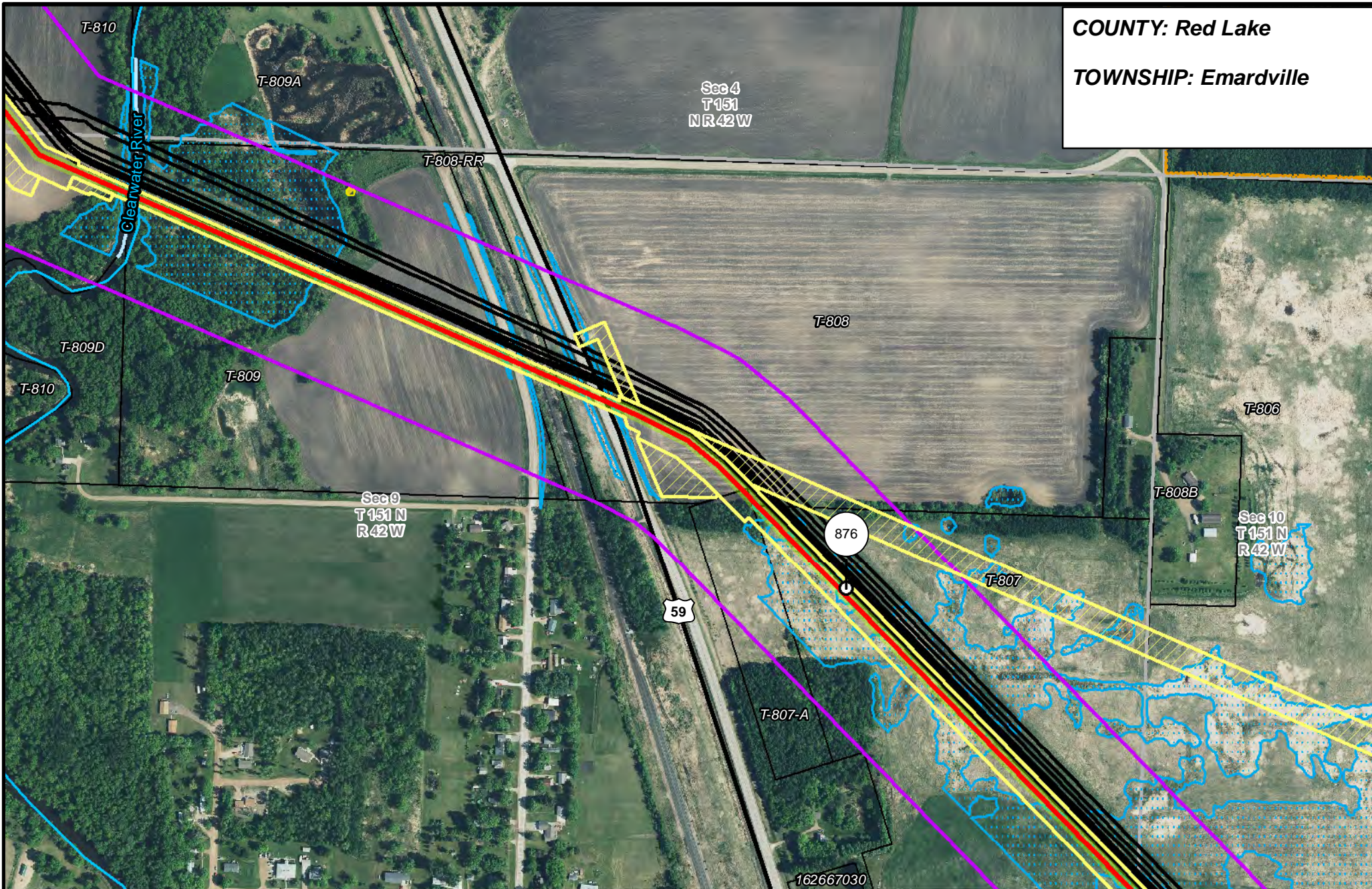


**LINE 3 REPLACEMENT PIPELINE ROUTE**

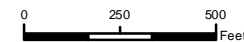
DRAWN: MLB      CHECKED: ...  
 DATE: August 31, 2018      SCALE: 1:6,000

Map 93 of 378

**COUNTY: Red Lake**  
**TOWNSHIP: Emarville**



- |                       |                                |                                |                        |
|-----------------------|--------------------------------|--------------------------------|------------------------|
| PUC Designated Route  | Mile Post                      | Surveyed Waterbodies           | Tract Boundary         |
| ROW                   | Temporary Workspace            | ESA                            | MN Section Boundary    |
| Line 3R Pipeline      | Additional Temporary Workspace | Surveyed Wetlands              | Township/City Boundary |
| Valve Location        | Existing Enbridge Pipelines    | NWI Wetlands                   | County Boundary        |
| Enbridge Pump Station | Existing Electric Transmission | Existing Third Party Pipelines |                        |

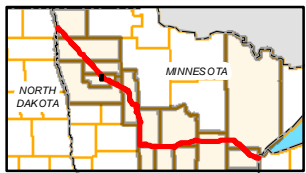
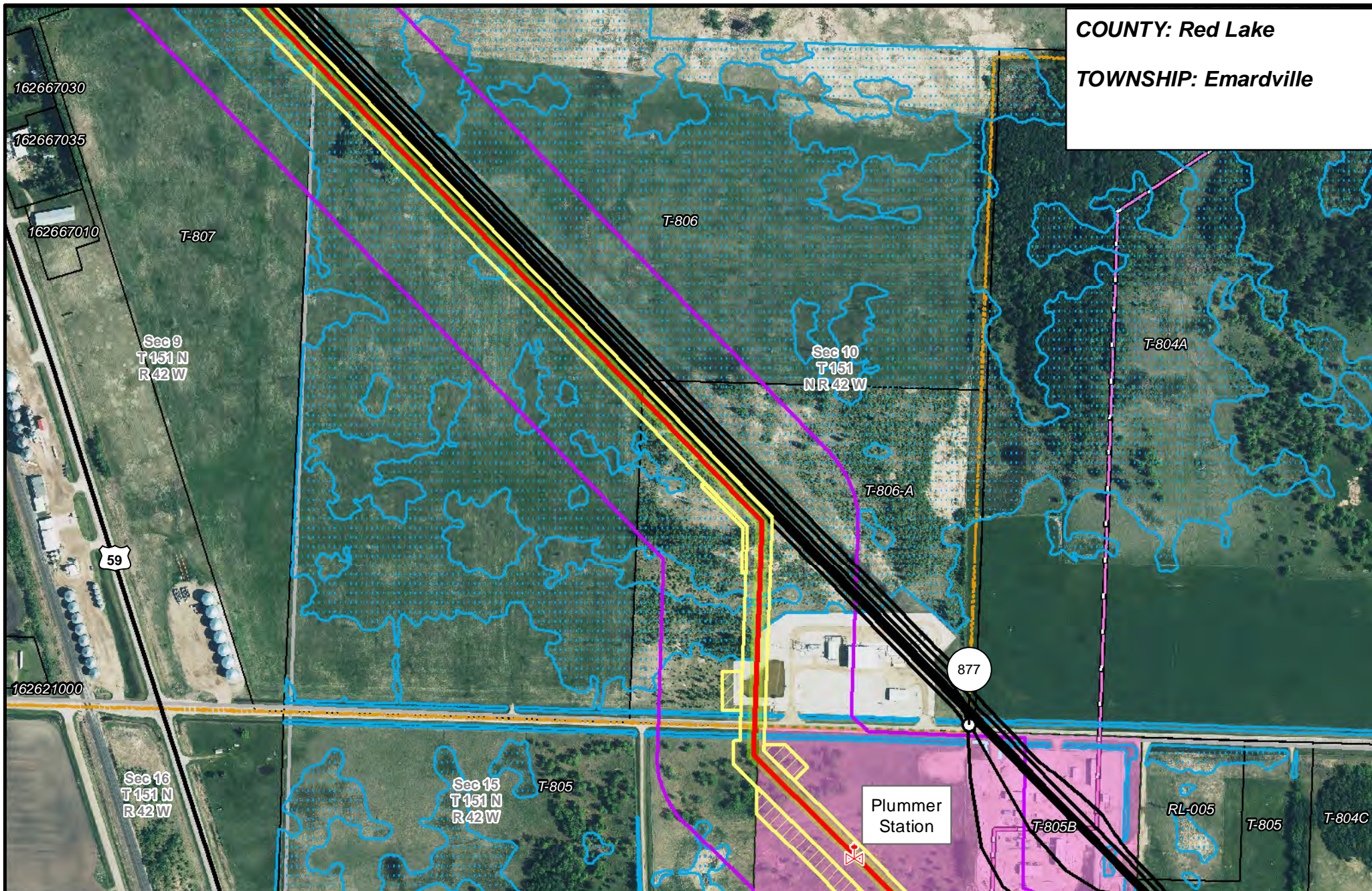


**LINE 3 REPLACEMENT PIPELINE ROUTE**

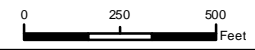
DRAWN: MLB CHECKED: ...  
 DATE: August 31, 2018 SCALE: 1:5,000  
 Map 94 of 378



**COUNTY: Red Lake**  
**TOWNSHIP: Emardville**



- |                       |                                |                                |                        |
|-----------------------|--------------------------------|--------------------------------|------------------------|
| PUC Designated Route  | Mile Post                      | Surveyed Waterbodies           | Tract Boundary         |
| ROW                   | Temporary Workspace            | ESA                            | MN Section Boundary    |
| Line 3R Pipeline      | Additional Temporary Workspace | Surveyed Wetlands              | Township/City Boundary |
| Valve Location        | Existing Enbridge Pipelines    | NWI Wetlands                   | County Boundary        |
| Enbridge Pump Station | Existing Electric Transmission | Existing Third Party Pipelines |                        |

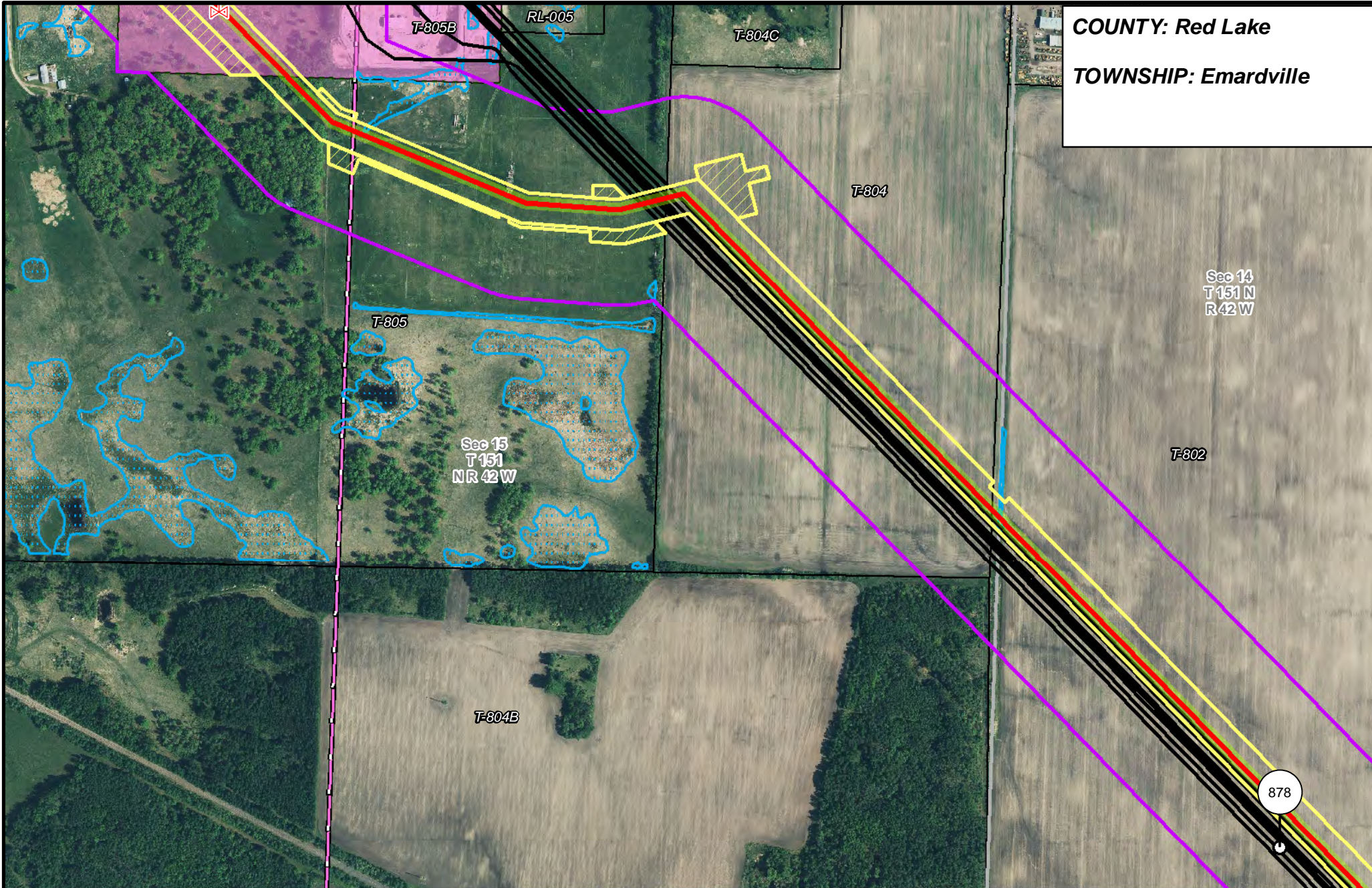


**LINE 3 REPLACEMENT PIPELINE ROUTE**

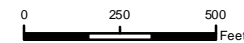
DRAWN: MLB      CHECKED: ---  
 DATE: August 31, 2018      SCALE: 1:5,000

Map 95 of 378

**COUNTY: Red Lake**  
**TOWNSHIP: Emardville**



- |                       |                                |                      |                        |
|-----------------------|--------------------------------|----------------------|------------------------|
| PUC Designated Route  | Mile Post                      | Surveyed Waterbodies | Tract Boundary         |
| ROW                   | Temporary Workspace            | ESA                  | MN Section Boundary    |
| Line 3R Pipeline      | Additional Temporary Workspace | Surveyed Wetlands    | Township/City Boundary |
| Valve Location        | Existing Enbridge Pipelines    | NWI Wetlands         | County Boundary        |
| Enbridge Pump Station | Existing Electric Transmission |                      |                        |
|                       | Existing Third Party Pipelines |                      |                        |

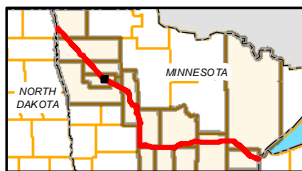
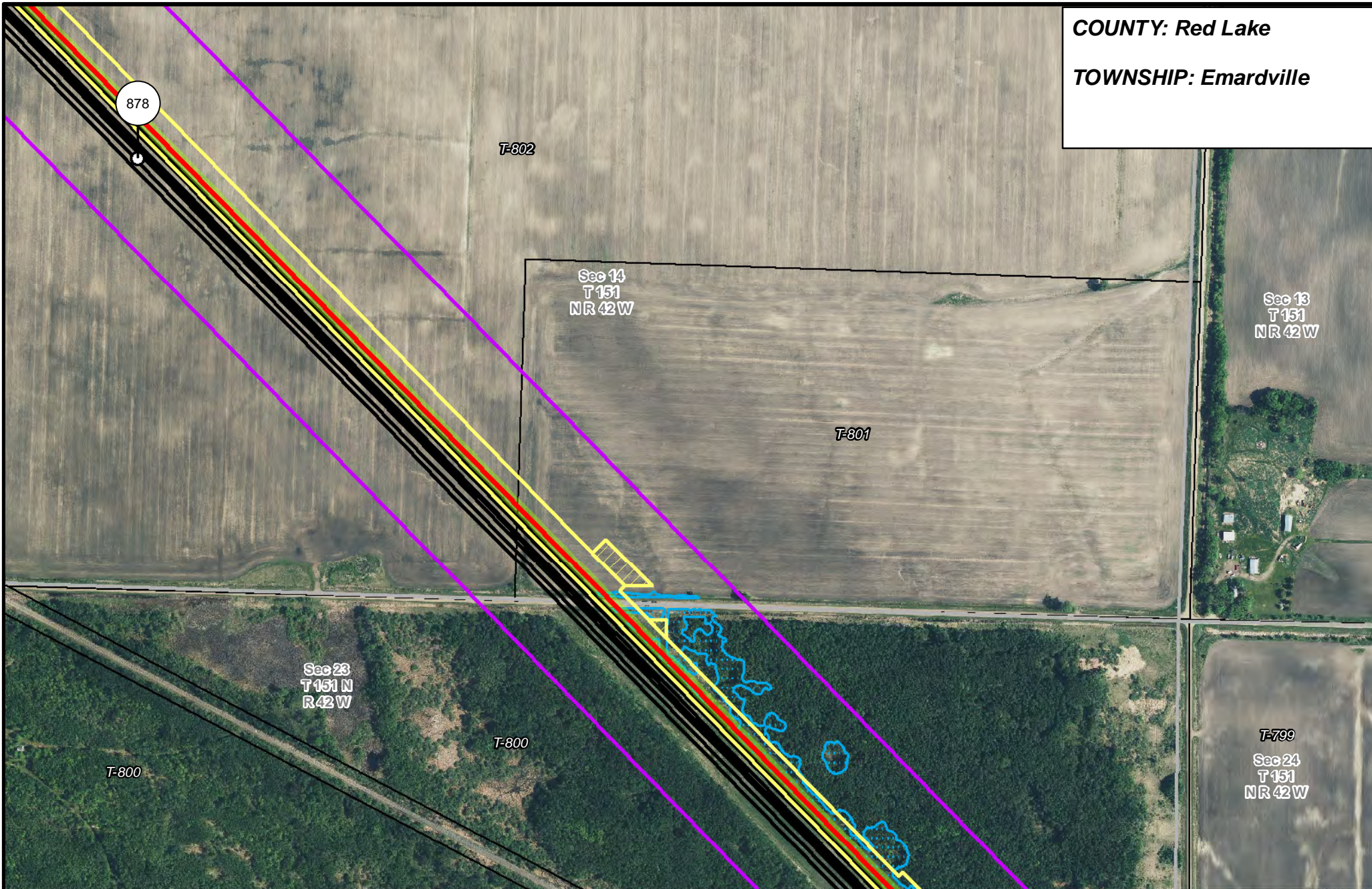


**LINE 3 REPLACEMENT PIPELINE ROUTE**

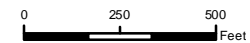
DRAWN: MLB      CHECKED: --  
 DATE: August 31, 2018      SCALE: 1:5,000

Map 96 of 378

**COUNTY:** Red Lake  
**TOWNSHIP:** Emardville



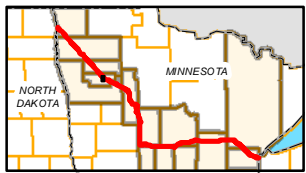
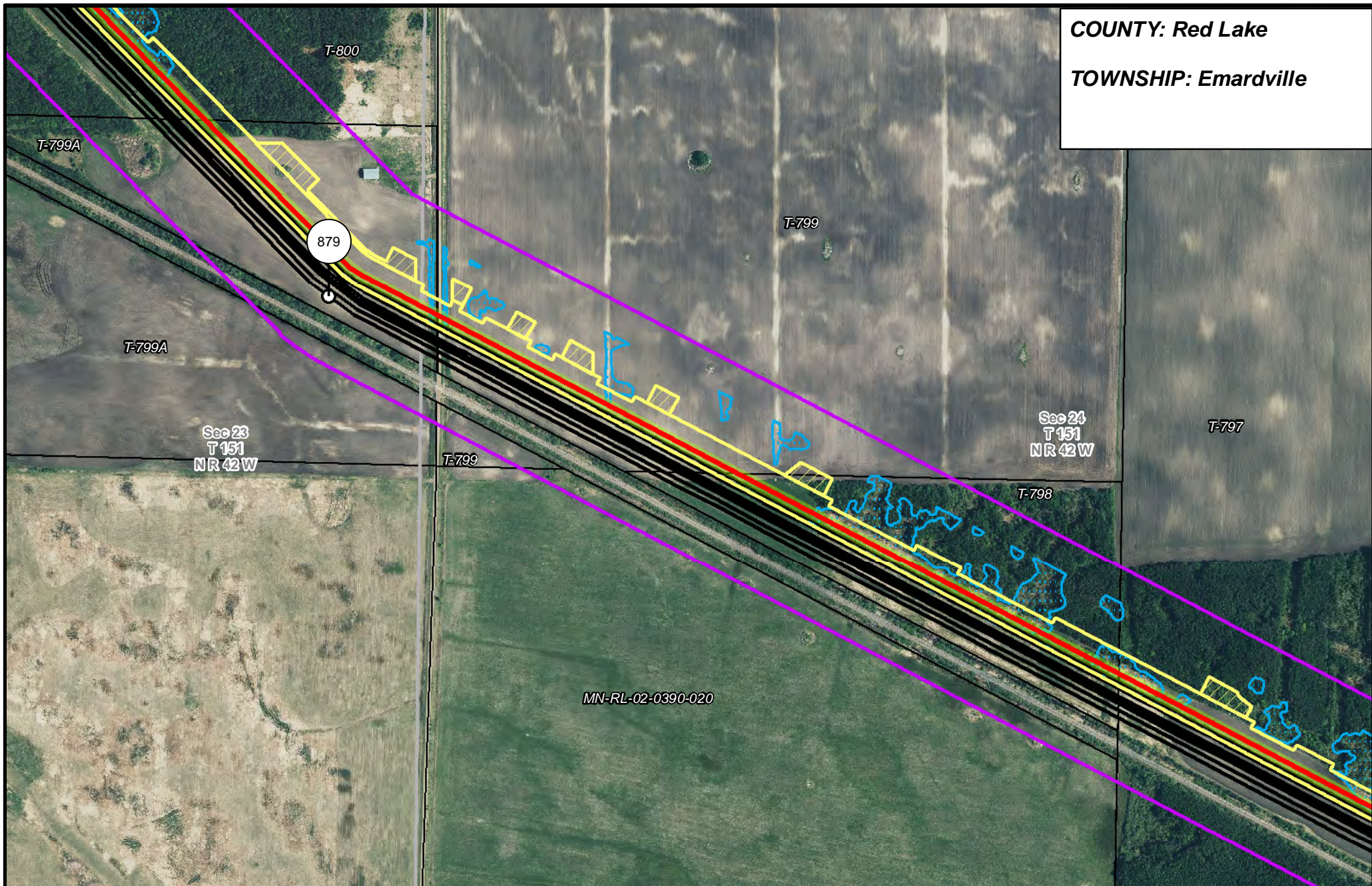
- |                       |                                |                      |                        |
|-----------------------|--------------------------------|----------------------|------------------------|
| PUC Designated Route  | Mile Post                      | Surveyed Waterbodies | Tract Boundary         |
| ROW                   | Temporary Workspace            | ESA                  | MN Section Boundary    |
| Line 3R Pipeline      | Additional Temporary Workspace | Surveyed Wetlands    | Township/City Boundary |
| Valve Location        | Existing Enbridge Pipelines    | NWI Wetlands         | County Boundary        |
| Enbridge Pump Station | Existing Electric Transmission |                      |                        |
|                       | Existing Third Party Pipelines |                      |                        |



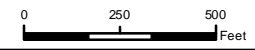
**LINE 3 REPLACEMENT  
 PIPELINE ROUTE**

DRAWN: MLB CHECKED: --  
 DATE: August 31, 2018 SCALE: 1:5,000  
 Map 97 of 378

**COUNTY: Red Lake**  
**TOWNSHIP: Emardville**



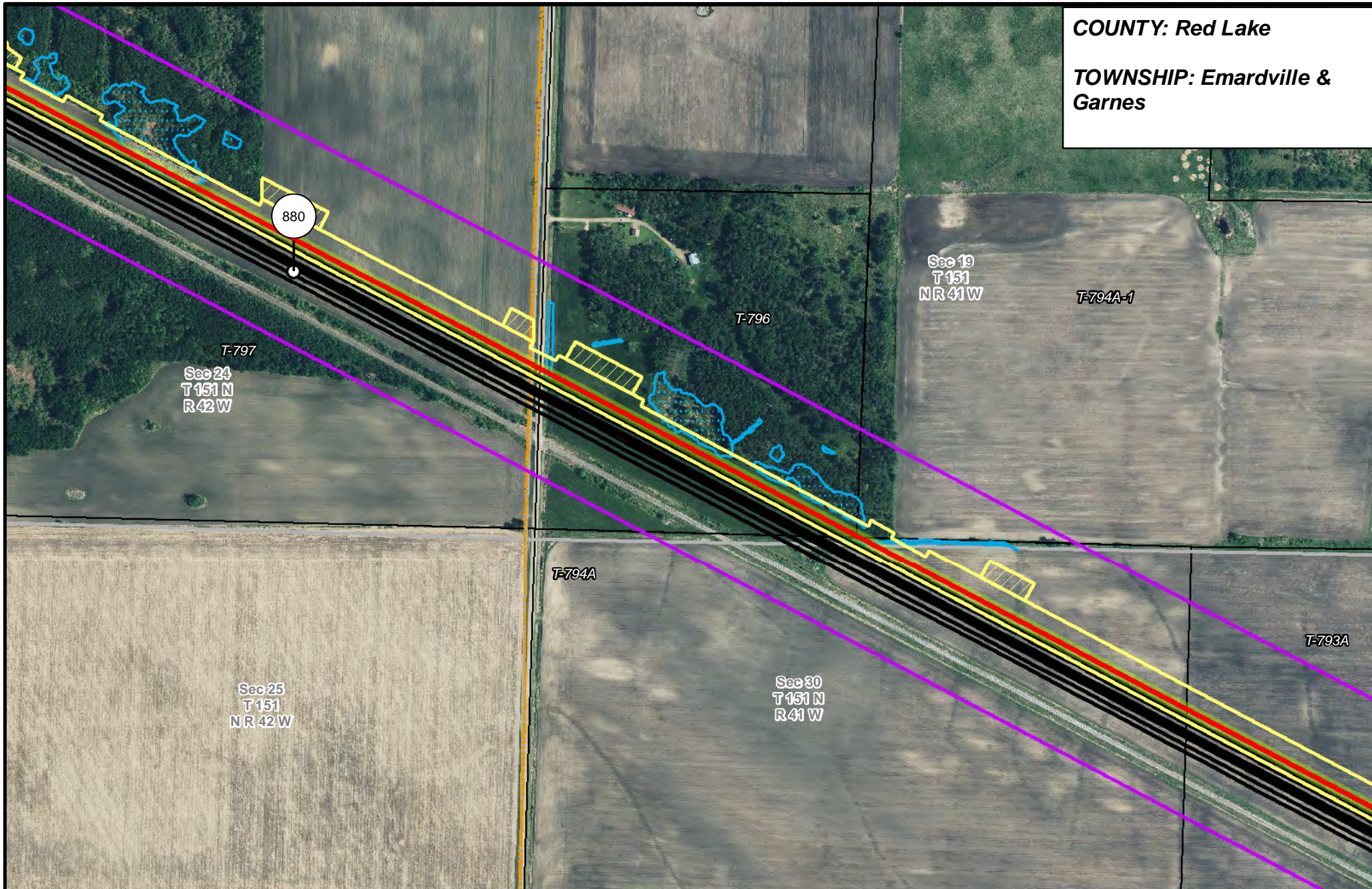
- |                       |                                |                      |                        |
|-----------------------|--------------------------------|----------------------|------------------------|
| PUC Designated Route  | Mile Post                      | Surveyed Waterbodies | Tract Boundary         |
| ROW                   | Temporary Workspace            | ESA                  | MN Section Boundary    |
| Line 3R Pipeline      | Additional Temporary Workspace | Surveyed Wetlands    | Township/City Boundary |
| Valve Location        | Existing Enbridge Pipelines    | NWI Wetlands         | County Boundary        |
| Enbridge Pump Station | Existing Electric Transmission |                      |                        |
|                       | Existing Third Party Pipelines |                      |                        |



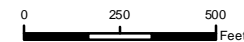
**LINE 3 REPLACEMENT  
PIPELINE ROUTE**

DRAWN: MLB CHECKED: --  
DATE: August 31, 2018 SCALE: 1:5,000  
Map 98 of 378

**COUNTY:** Red Lake  
**TOWNSHIP:** Emardville & Garnes



- |                       |                                |                      |                        |
|-----------------------|--------------------------------|----------------------|------------------------|
| PUC Designated Route  | Mile Post                      | Surveyed Waterbodies | Tract Boundary         |
| ROW                   | Temporary Workspace            | ESA                  | MN Section Boundary    |
| Line 3R Pipeline      | Additional Temporary Workspace | Surveyed Wetlands    | Township/City Boundary |
| Valve Location        | Existing Enbridge Pipelines    | NWI Wetlands         | County Boundary        |
| Enbridge Pump Station | Existing Electric Transmission |                      |                        |
|                       | Existing Third Party Pipelines |                      |                        |

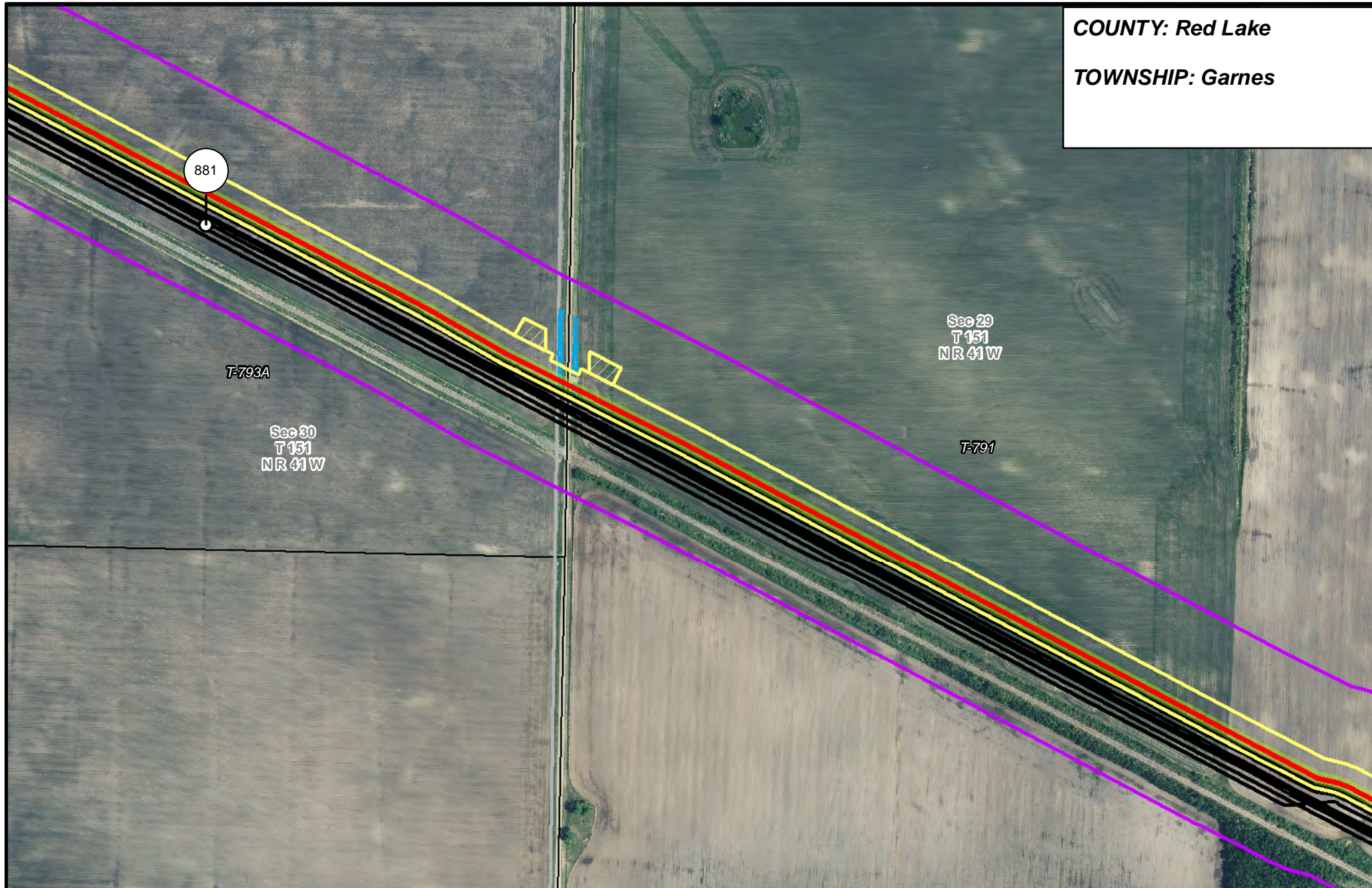


**LINE 3 REPLACEMENT  
 PIPELINE ROUTE**

DRAWN: MLB CHECKED: --  
 DATE: August 31, 2018 SCALE: 1:5,000  
 Map 99 of 378

COUNTY: Red Lake

TOWNSHIP: Games

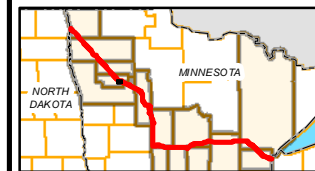


T-793A

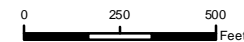
Sec 30  
T 151  
NR 41 W

Sec 29  
T 151  
NR 41 W

T-791



- PUC Designated Route
- ROW
- Line 3R Pipeline
- Valve Location
- Enbridge Pump Station
- Mile Post
- Temporary Workspace
- Additional Temporary Workspace
- Existing Enbridge Pipelines
- Existing Electric Transmission
- Existing Third Party Pipelines
- Surveyed Waterbodies
- ESA
- Surveyed Wetlands
- NWI Wetlands
- Tract Boundary
- MN Section Boundary
- Township/City Boundary
- County Boundary

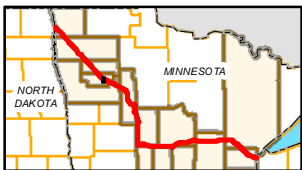
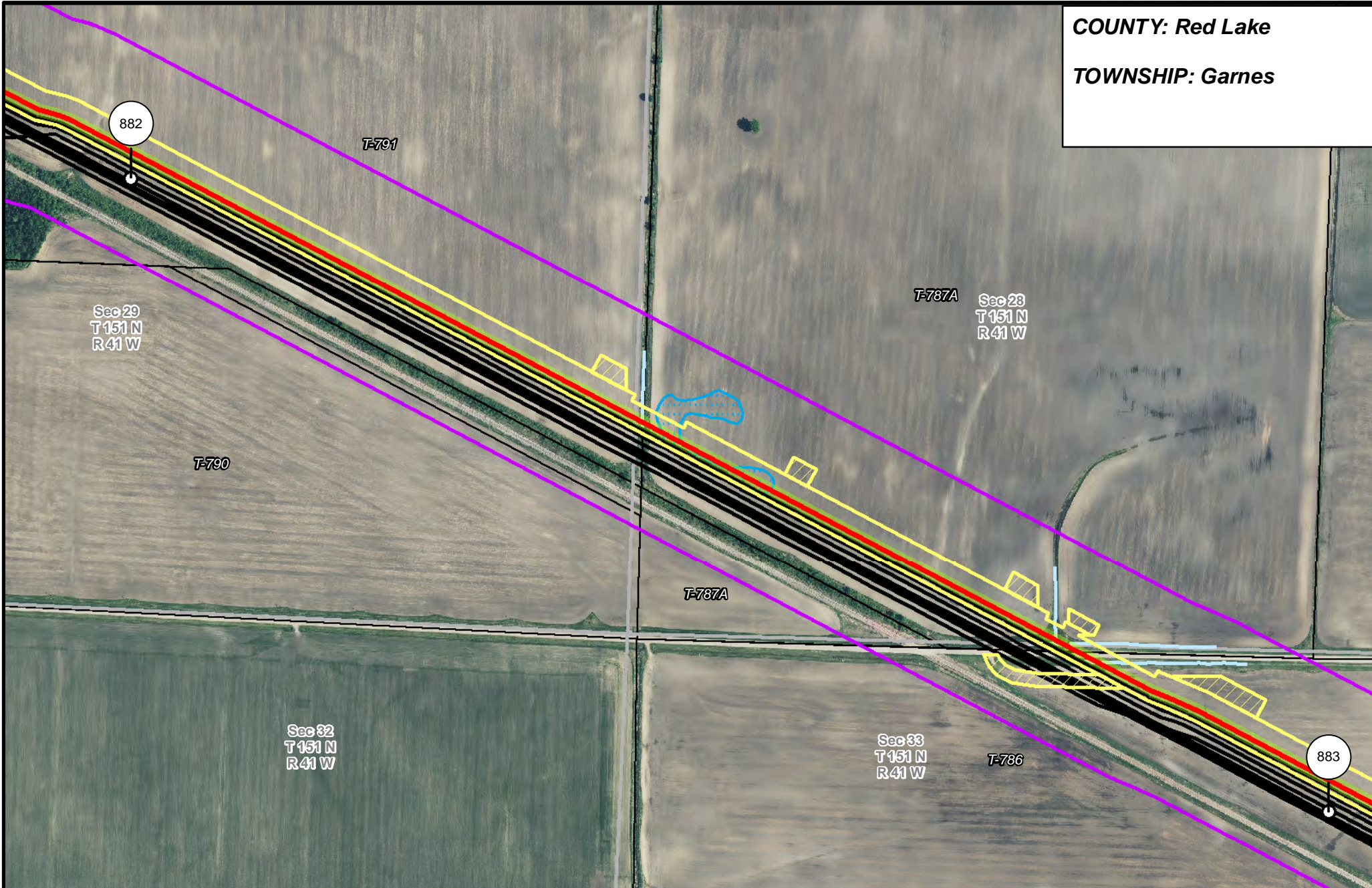


### LINE 3 REPLACEMENT PIPELINE ROUTE

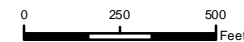
DRAWN: MLB CHECKED: --  
DATE: August 31, 2018 SCALE: 1:5,000

COUNTY: Red Lake

TOWNSHIP: Games



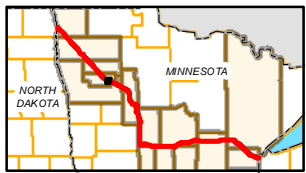
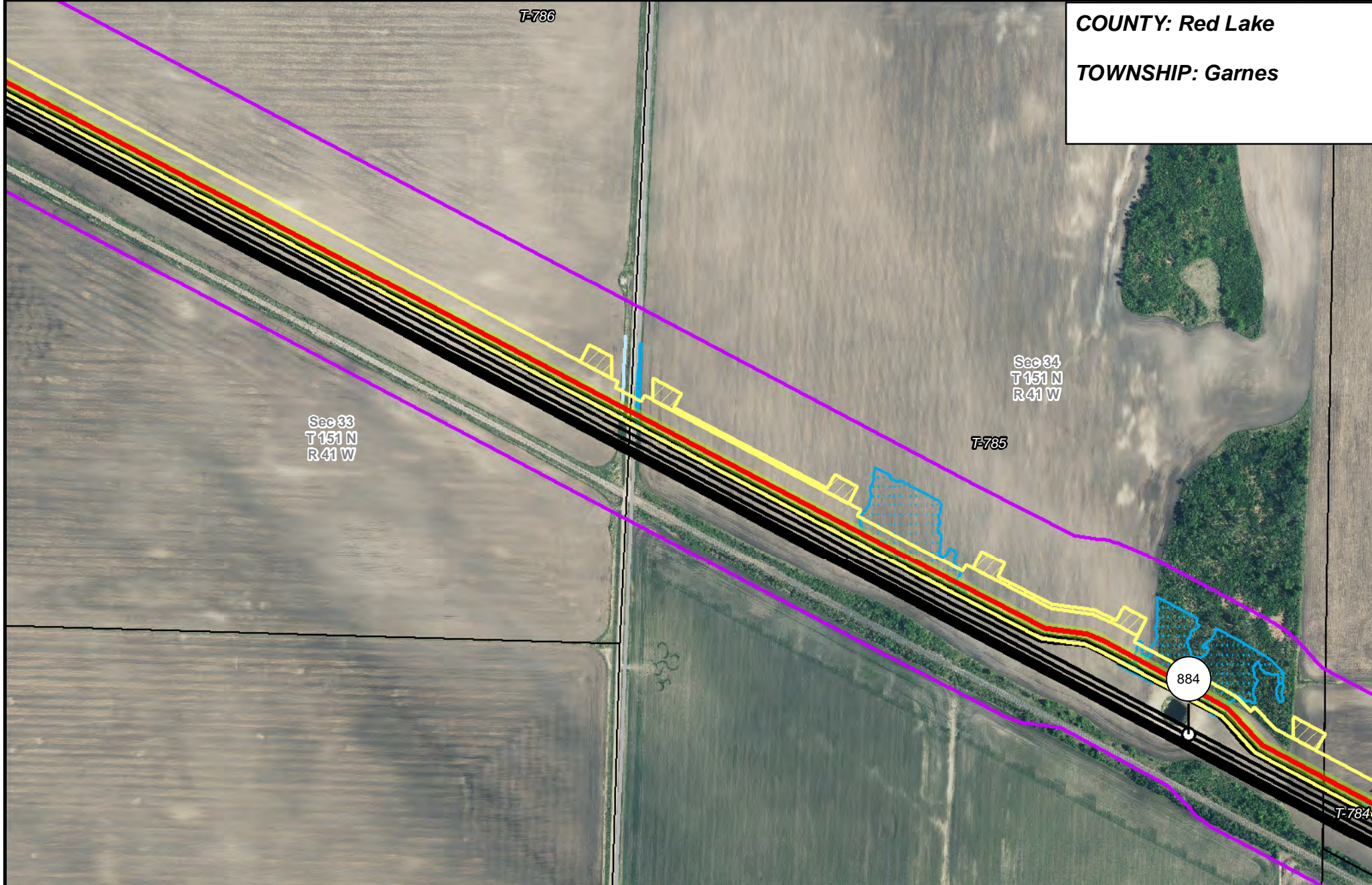
- |                       |                                |                      |                        |
|-----------------------|--------------------------------|----------------------|------------------------|
| PUC Designated Route  | Mile Post                      | Surveyed Waterbodies | Tract Boundary         |
| ROW                   | Temporary Workspace            | ESA                  | MN Section Boundary    |
| Line 3R Pipeline      | Additional Temporary Workspace | Surveyed Wetlands    | Township/City Boundary |
| Valve Location        | Existing Enbridge Pipelines    | NWI Wetlands         | County Boundary        |
| Enbridge Pump Station | Existing Electric Transmission |                      |                        |
|                       | Existing Third Party Pipelines |                      |                        |



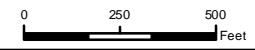
### LINE 3 REPLACEMENT PIPELINE ROUTE

DRAWN: MLB CHECKED: --  
DATE: August 31, 2018 SCALE: 1:5,000  
Map 101 of 378

**COUNTY: Red Lake**  
**TOWNSHIP: Garnes**



- |                       |                                |                      |                        |
|-----------------------|--------------------------------|----------------------|------------------------|
| PUC Designated Route  | Mile Post                      | Surveyed Waterbodies | Tract Boundary         |
| ROW                   | Temporary Workspace            | ESA                  | MN Section Boundary    |
| Line 3R Pipeline      | Additional Temporary Workspace | Surveyed Wetlands    | Township/City Boundary |
| Valve Location        | Existing Enbridge Pipelines    | NWI Wetlands         | County Boundary        |
| Enbridge Pump Station | Existing Electric Transmission |                      |                        |
|                       | Existing Third Party Pipelines |                      |                        |



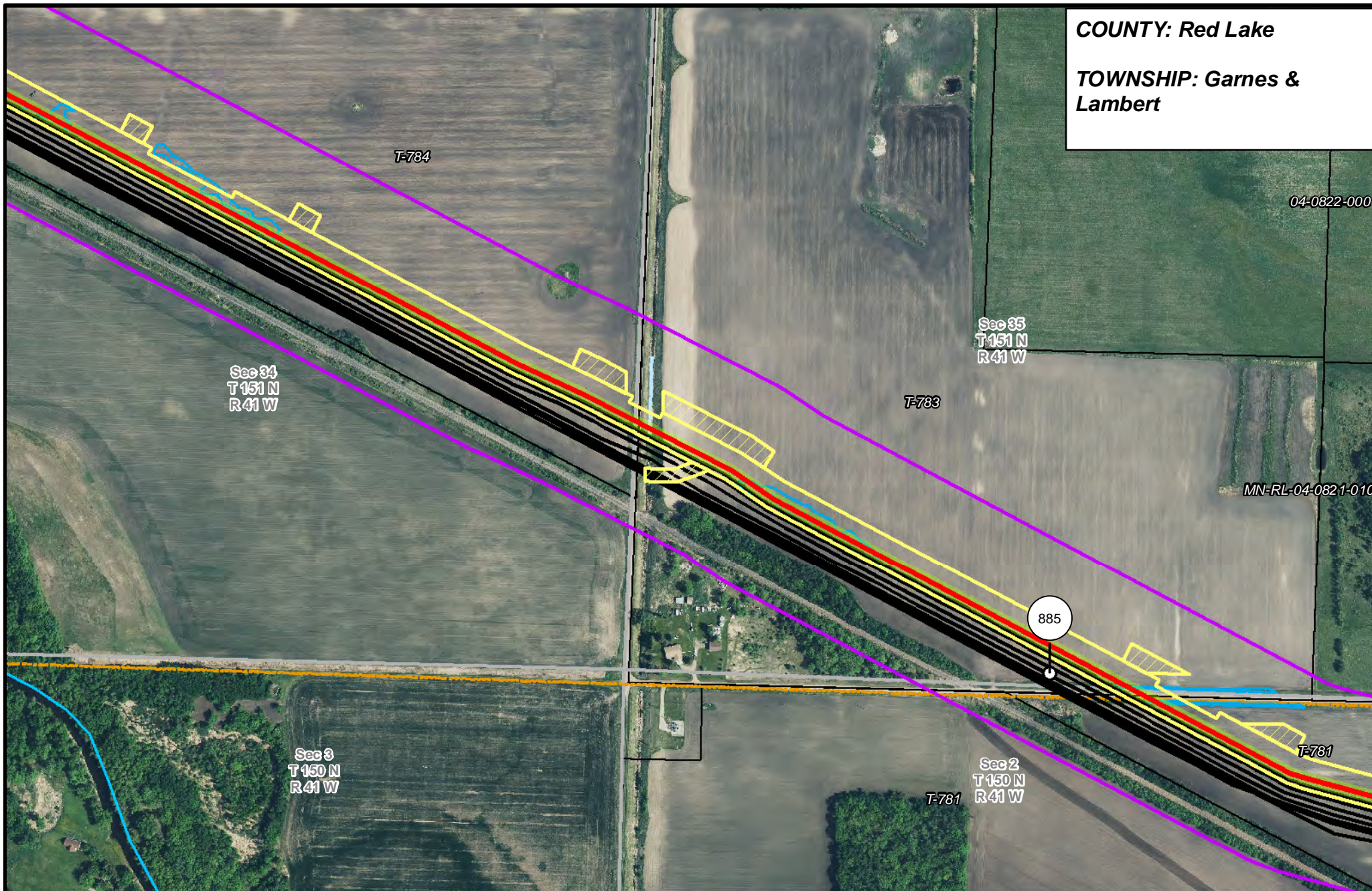
**LINE 3 REPLACEMENT PIPELINE ROUTE**

DRAWN: MLB CHECKED: --  
 DATE: August 31, 2018 SCALE: 1:5,000  
 Map 102 of 378



COUNTY: Red Lake

TOWNSHIP: Garnes & Lambert



Sec 34  
T 151 N  
R 41 W

T-784

Sec 35  
T 151 N  
R 41 W

T-783

Sec 3  
T 150 N  
R 41 W

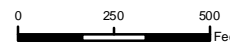
T-781

Sec 2  
T 150 N  
R 41 W

885



- PUC Designated Route
- ROW
- Line 3R Pipeline
- Valve Location
- Enbridge Pump Station
- Mile Post
- Temporary Workspace
- Additional Temporary Workspace
- Existing Enbridge Pipelines
- Existing Electric Transmission
- Existing Third Party Pipelines
- Surveyed Waterbodies
- ESA
- Surveyed Wetlands
- NWI Wetlands
- Tract Boundary
- MN Section Boundary
- Township/City Boundary
- County Boundary



### LINE 3 REPLACEMENT PIPELINE ROUTE

DRAWN: MLB CHECKED: --  
DATE: August 31, 2018 SCALE: 1:5,000  
Map 103 of 378

COUNTY: Red Lake

TOWNSHIP: Lambert

MN-RL-04-0821-010

Sec 35  
T 151 N  
R 41 W

04-0822-000

Sec 36  
T 151 N  
R 41 W

T-783

T-781

T-780A

T-779

T-778-OL

Sec 1  
T 150 N  
R 41 W

ROW8056

MN-RL-07-1426-010

Sec 2  
T 150  
N R 41 W

T-780

T-778

ROW8061

886

ROW8057

T-781

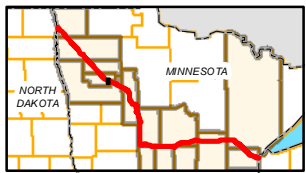
T-775

MN-RL-15.2549.000

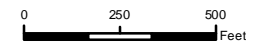
MN-RL-15.2332.000

T-776

T-774



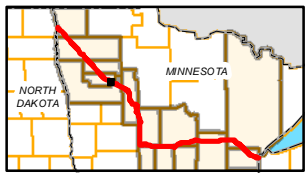
- PUC Designated Route
- ROW
- Line 3R Pipeline
- Valve Location
- Enbridge Pump Station
- Mile Post
- Temporary Workspace
- Additional Temporary Workspace
- Existing Enbridge Pipelines
- Existing Electric Transmission
- Existing Third Party Pipelines
- Surveyed Waterbodies
- ESA
- Surveyed Wetlands
- NWI Wetlands
- Tract Boundary
- MN Section Boundary
- Township/City Boundary
- County Boundary



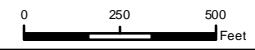
### LINE 3 REPLACEMENT PIPELINE ROUTE

DRAWN: MLB      CHECKED: --  
 DATE: August 31, 2018      SCALE: 1:5,000  
 Map 104 of 378

**COUNTY: Red Lake & Polk**  
**TOWNSHIP: Lambert & Chester**



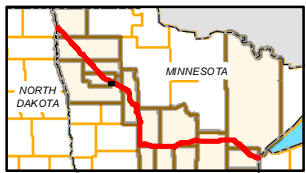
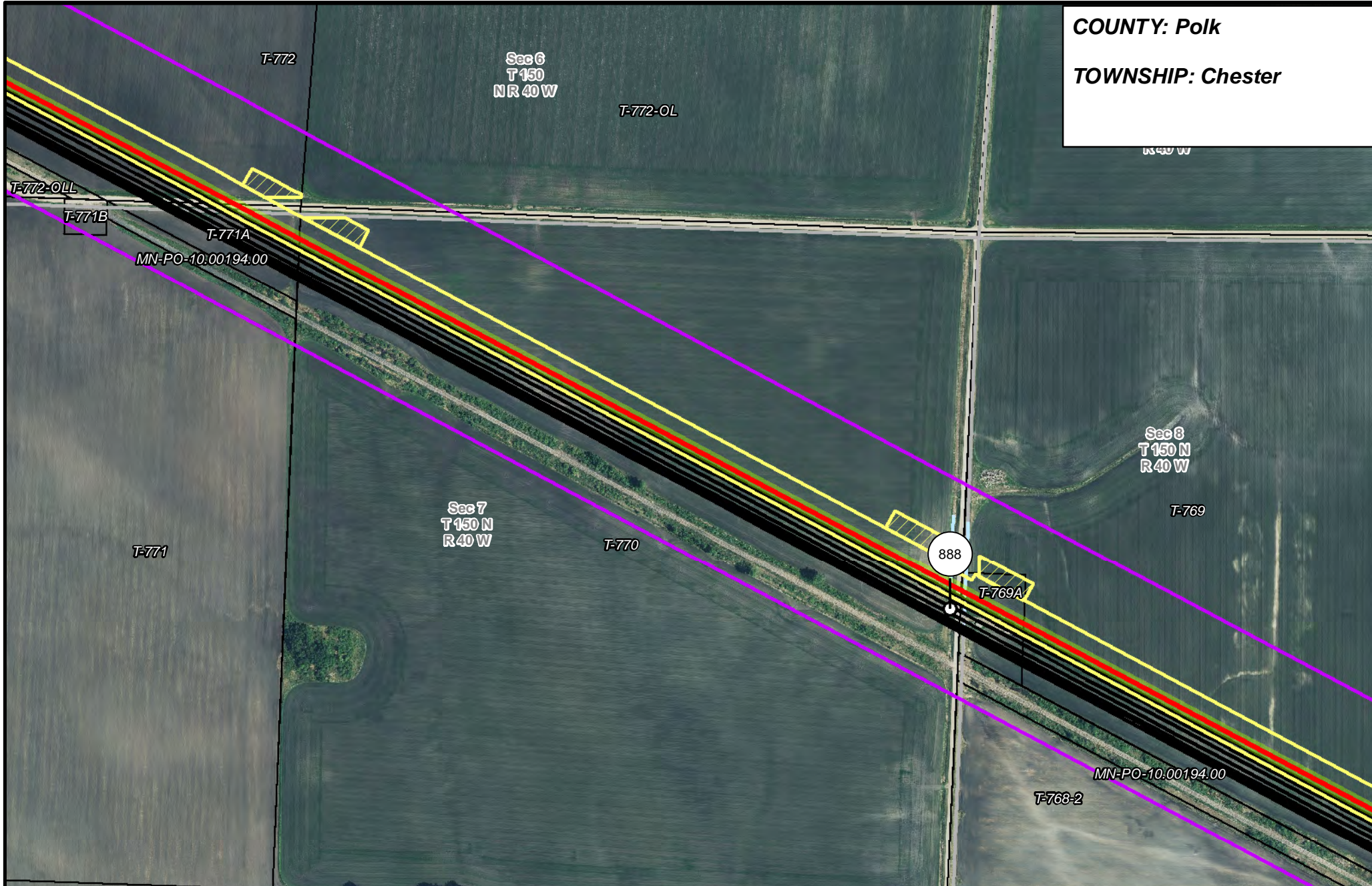
- |                       |                                |                                |                        |
|-----------------------|--------------------------------|--------------------------------|------------------------|
| PUC Designated Route  | Mile Post                      | Surveyed Waterbodies           | Tract Boundary         |
| ROW                   | Temporary Workspace            | ESA                            | MN Section Boundary    |
| Line 3R Pipeline      | Additional Temporary Workspace | Surveyed Wetlands              | Township/City Boundary |
| Valve Location        | Existing Enbridge Pipelines    | NWI Wetlands                   | County Boundary        |
| Enbridge Pump Station | Existing Electric Transmission | Existing Third Party Pipelines |                        |



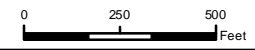
**LINE 3 REPLACEMENT PIPELINE ROUTE**

DRAWN: MLB CHECKED: --  
 DATE: August 31, 2018 SCALE: 1:5,000  
 Map 105 of 378

**COUNTY: Polk**  
**TOWNSHIP: Chester**



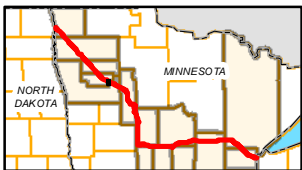
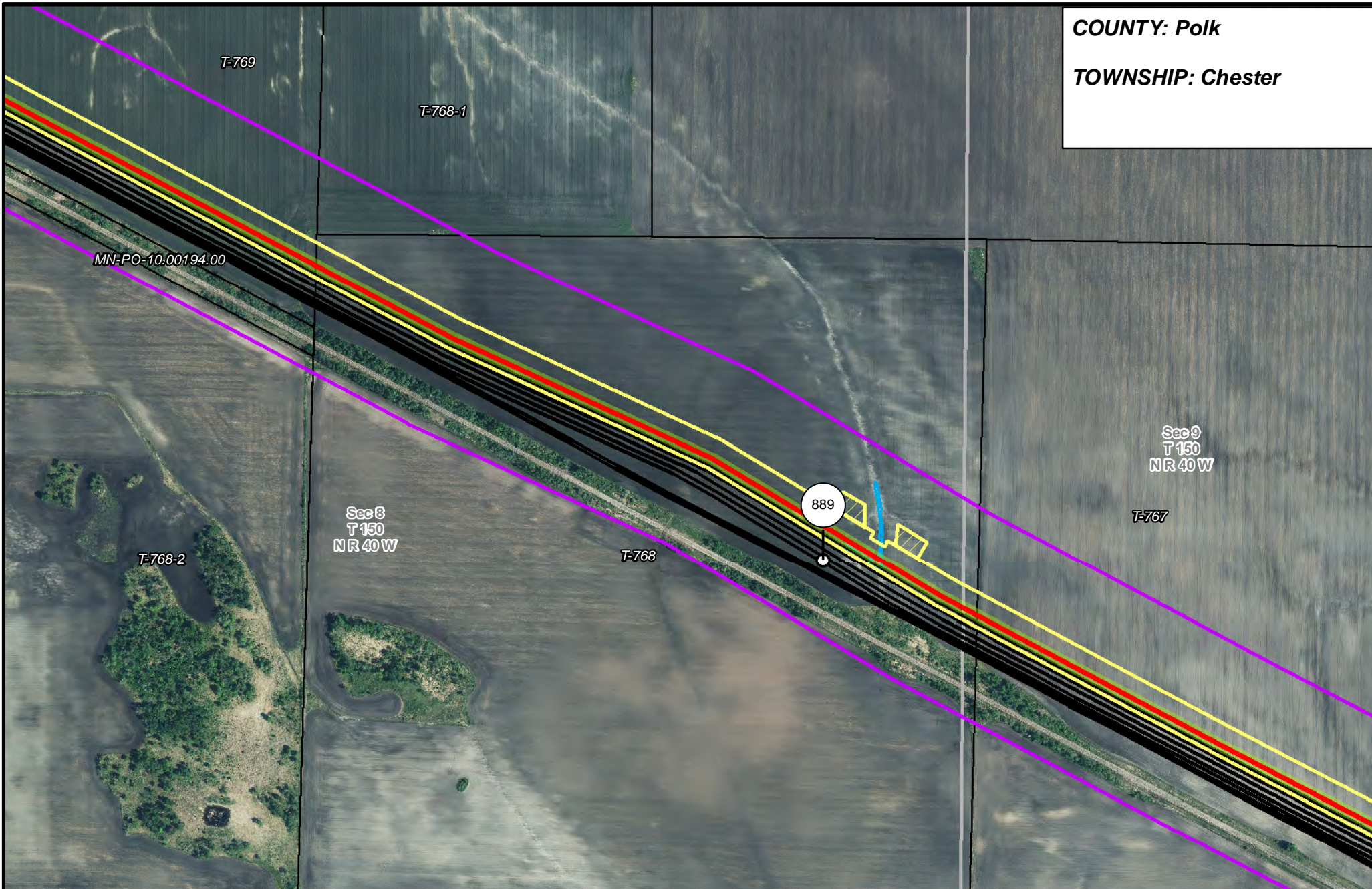
- |                       |                                |                      |                        |
|-----------------------|--------------------------------|----------------------|------------------------|
| PUC Designated Route  | Mile Post                      | Surveyed Waterbodies | Tract Boundary         |
| ROW                   | Temporary Workspace            | ESA                  | MN Section Boundary    |
| Line 3R Pipeline      | Additional Temporary Workspace | Surveyed Wetlands    | Township/City Boundary |
| Valve Location        | Existing Enbridge Pipelines    | NWI Wetlands         | County Boundary        |
| Enbridge Pump Station | Existing Electric Transmission |                      |                        |
|                       | Existing Third Party Pipelines |                      |                        |



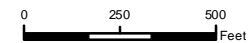
**LINE 3 REPLACEMENT PIPELINE ROUTE**

DRAWN: MLB CHECKED: --  
 DATE: August 31, 2018 SCALE: 1:5,000  
 Map 106 of 378

**COUNTY: Polk**  
**TOWNSHIP: Chester**



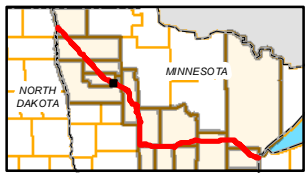
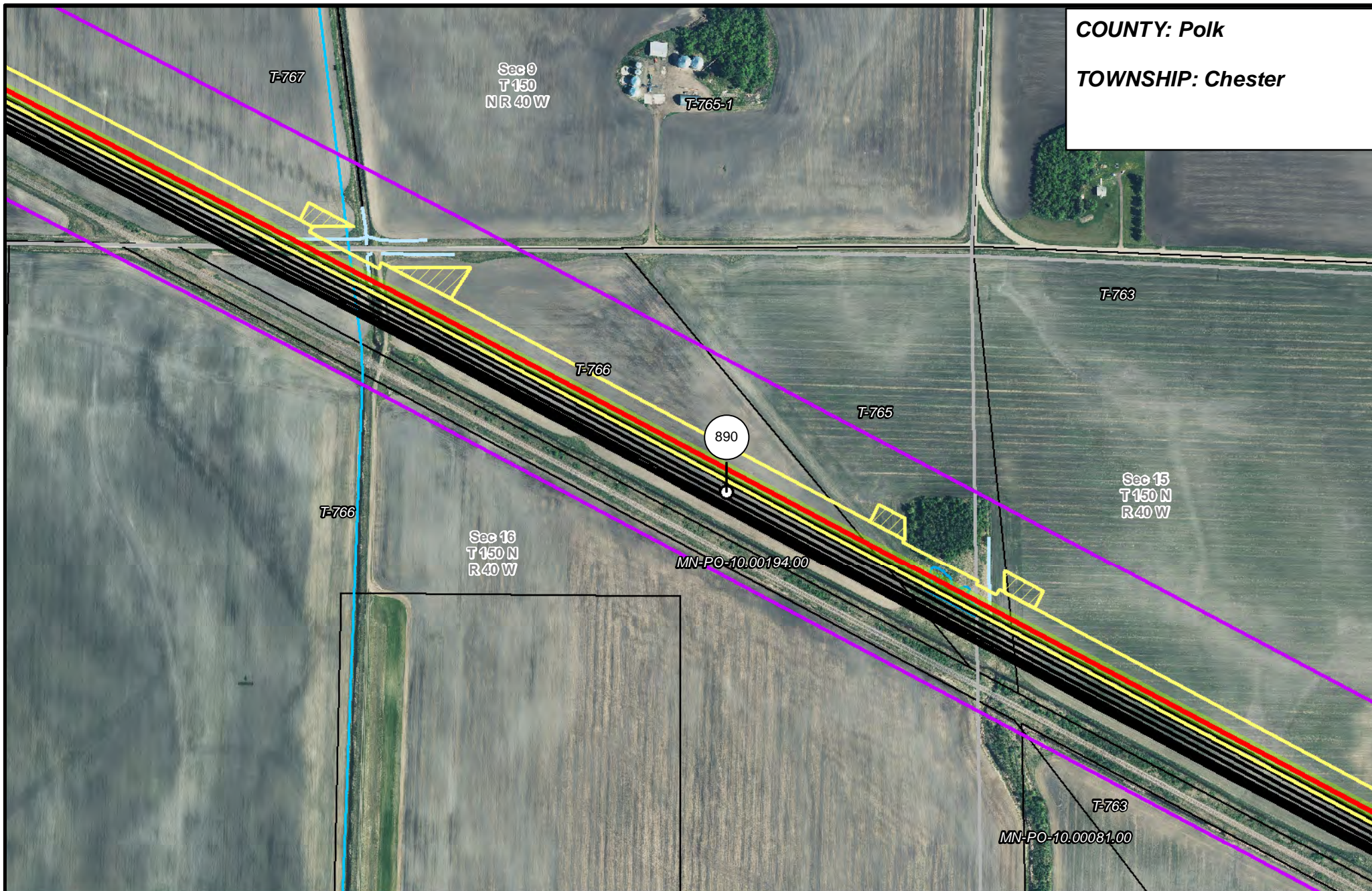
- |                       |                                |                      |                        |
|-----------------------|--------------------------------|----------------------|------------------------|
| PUC Designated Route  | Mile Post                      | Surveyed Waterbodies | Tract Boundary         |
| ROW                   | Temporary Workspace            | ESA                  | MN Section Boundary    |
| Line 3R Pipeline      | Additional Temporary Workspace | Surveyed Wetlands    | Township/City Boundary |
| Valve Location        | Existing Enbridge Pipelines    | NWI Wetlands         | County Boundary        |
| Enbridge Pump Station | Existing Electric Transmission |                      |                        |
|                       | Existing Third Party Pipelines |                      |                        |



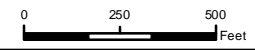
**LINE 3 REPLACEMENT PIPELINE ROUTE**

DRAWN: MLB CHECKED: --  
 DATE: August 31, 2018 SCALE: 1:5,000  
 Map 107 of 378

**COUNTY: Polk**  
**TOWNSHIP: Chester**



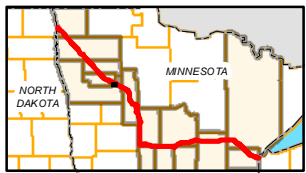
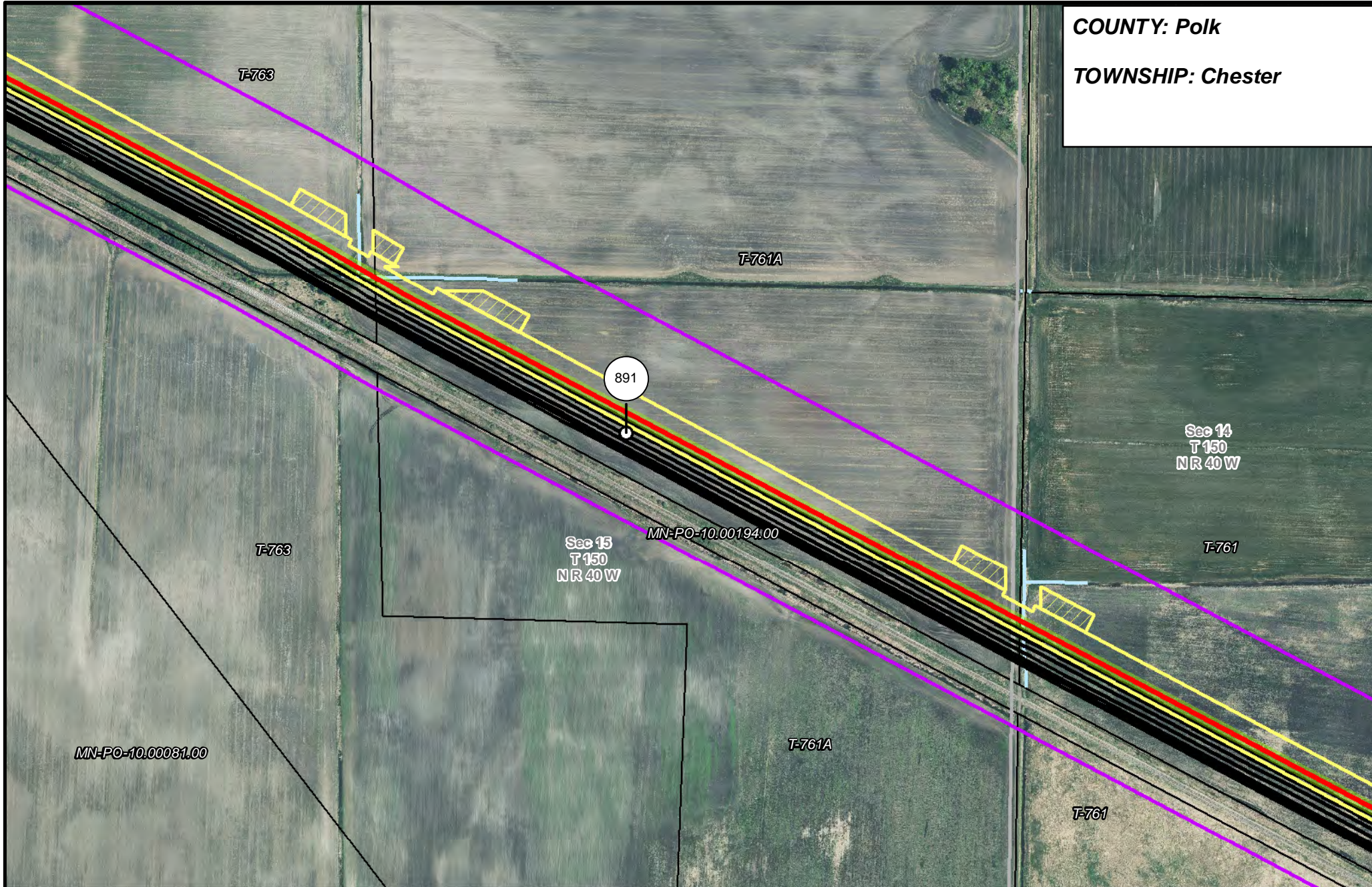
- |                       |                                |                      |                        |
|-----------------------|--------------------------------|----------------------|------------------------|
| PUC Designated Route  | Mile Post                      | Surveyed Waterbodies | Tract Boundary         |
| ROW                   | Temporary Workspace            | ESA                  | MN Section Boundary    |
| Line 3R Pipeline      | Additional Temporary Workspace | Surveyed Wetlands    | Township/City Boundary |
| Valve Location        | Existing Enbridge Pipelines    | NWI Wetlands         | County Boundary        |
| Enbridge Pump Station | Existing Electric Transmission |                      |                        |
|                       | Existing Third Party Pipelines |                      |                        |



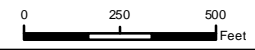
**LINE 3 REPLACEMENT PIPELINE ROUTE**

DRAWN: MLB CHECKED: --  
 DATE: August 31, 2018 SCALE: 1:5,000  
 Map 108 of 378

**COUNTY: Polk**  
**TOWNSHIP: Chester**



- |                       |                                |                      |                        |
|-----------------------|--------------------------------|----------------------|------------------------|
| PUC Designated Route  | Mile Post                      | Surveyed Waterbodies | Tract Boundary         |
| ROW                   | Temporary Workspace            | ESA                  | MN Section Boundary    |
| Line 3R Pipeline      | Additional Temporary Workspace | Surveyed Wetlands    | Township/City Boundary |
| Valve Location        | Existing Enbridge Pipelines    | NWI Wetlands         | County Boundary        |
| Enbridge Pump Station | Existing Electric Transmission |                      |                        |
|                       | Existing Third Party Pipelines |                      |                        |



**LINE 3 REPLACEMENT PIPELINE ROUTE**

DRAWN: MLB CHECKED: --  
 DATE: August 31, 2018 SCALE: 1:5,000  
 Map 109 of 378