

COUNTY: Marshall

TOWNSHIP: Alma

T-940

T-939

Sec 2
T 156 N
R 47 W

Sec 1
T 156 N
R 47 W

834

T-937

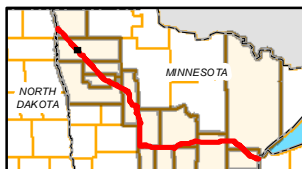
T-938

T-938B

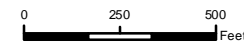
T-938A

T-938

T-936



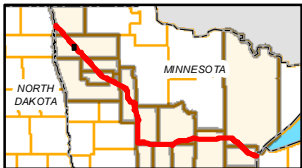
- | | | | |
|--------------------------------|--------------------------------|----------------------|------------------------|
| PUC Designated Route | Mile Post | Surveyed Waterbodies | Tract Boundary |
| ROW | Temporary Workspace | ESA | MN Section Boundary |
| Line 3R Pipeline | Additional Temporary Workspace | Surveyed Wetlands | Township/City Boundary |
| Valve Location | Existing Enbridge Pipelines | NWI Wetlands | County Boundary |
| Enbridge Pump Station | Existing Electric Transmission | | |
| Existing Third Party Pipelines | | | |



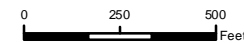
LINE 3 REPLACEMENT PIPELINE ROUTE

DRAWN: MLB CHECKED: --
DATE: August 31, 2018 SCALE: 1:5,000
Map 41 of 378

COUNTY: Marshall
TOWNSHIP: Alma & Foldahl



- | | | | |
|-----------------------|--------------------------------|--------------------------------|------------------------|
| PUC Designated Route | Mile Post | Surveyed Waterbodies | Tract Boundary |
| ROW | Temporary Workspace | ESA | MN Section Boundary |
| Line 3R Pipeline | Additional Temporary Workspace | Surveyed Wetlands | Township/City Boundary |
| Valve Location | Existing Enbridge Pipelines | NWI Wetlands | County Boundary |
| Enbridge Pump Station | Existing Electric Transmission | Existing Third Party Pipelines | |

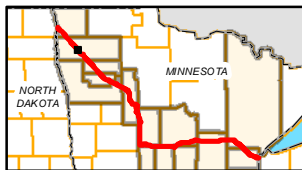
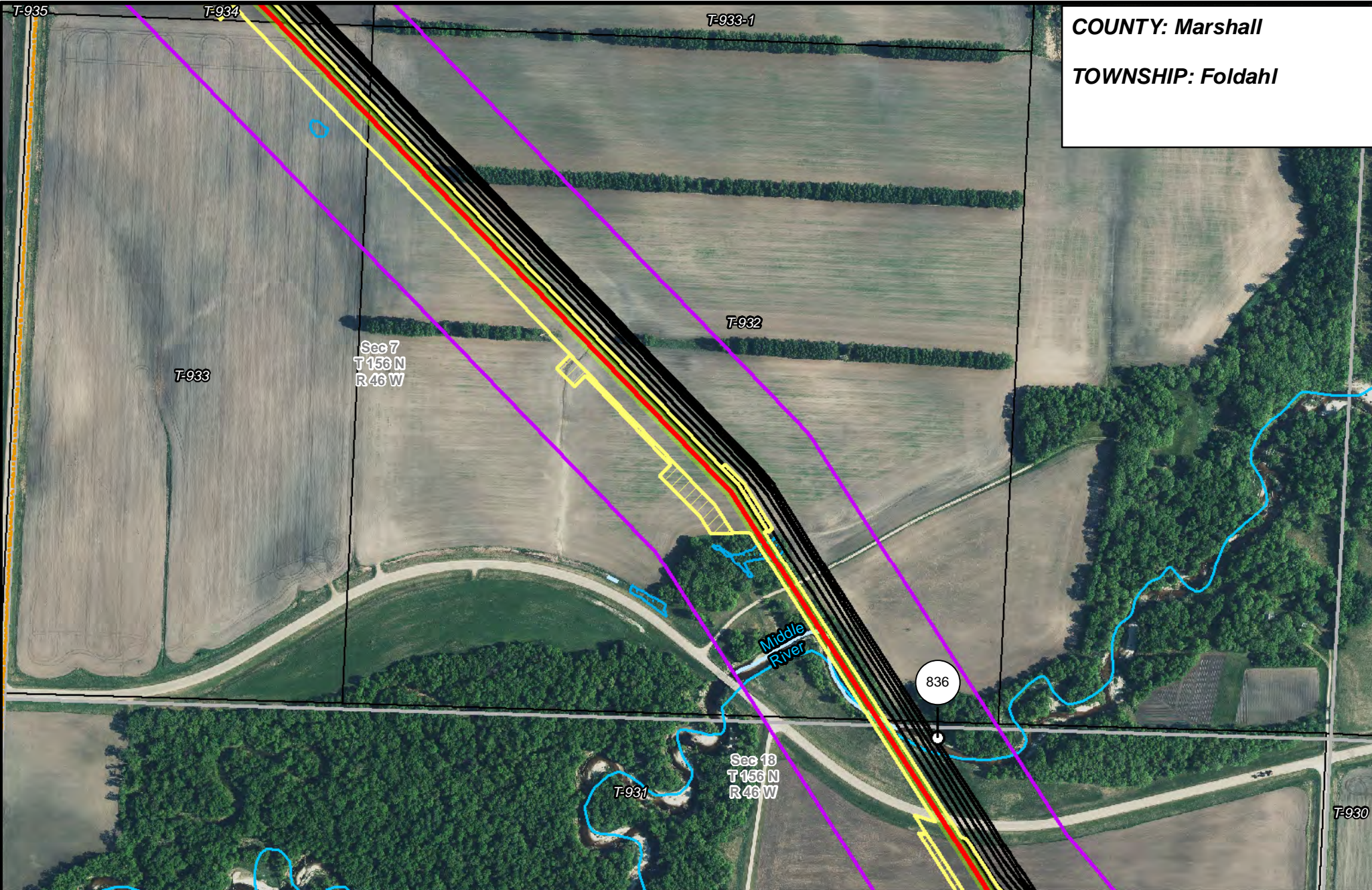


LINE 3 REPLACEMENT PIPELINE ROUTE

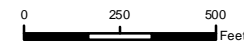
DRAWN: MLB CHECKED: --
 DATE: August 31, 2018 SCALE: 1:5,000
 Map 42 of 378

COUNTY: Marshall

TOWNSHIP: Foldahl



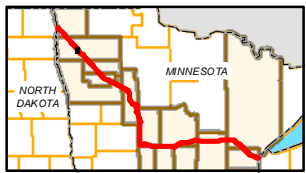
- | | | | |
|-----------------------|--------------------------------|----------------------|------------------------|
| PUC Designated Route | Mile Post | Surveyed Waterbodies | Tract Boundary |
| ROW | Temporary Workspace | ESA | MN Section Boundary |
| Line 3R Pipeline | Additional Temporary Workspace | Surveyed Wetlands | Township/City Boundary |
| Valve Location | Existing Enbridge Pipelines | NWI Wetlands | County Boundary |
| Enbridge Pump Station | Existing Electric Transmission | | |
| | Existing Third Party Pipelines | | |



LINE 3 REPLACEMENT PIPELINE ROUTE

DRAWN: MLB CHECKED: --
DATE: August 31, 2018 SCALE: 1:5,000
Map 43 of 378

COUNTY: Marshall
TOWNSHIP: Foldahl



- | | | | |
|-----------------------|--------------------------------|----------------------|------------------------|
| PUC Designated Route | Mile Post | Surveyed Waterbodies | Tract Boundary |
| ROW | Temporary Workspace | ESA | MN Section Boundary |
| Line 3R Pipeline | Additional Temporary Workspace | Surveyed Wetlands | Township/City Boundary |
| Valve Location | Existing Enbridge Pipelines | NWI Wetlands | County Boundary |
| Enbridge Pump Station | Existing Electric Transmission | | |
| | Existing Third Party Pipelines | | |

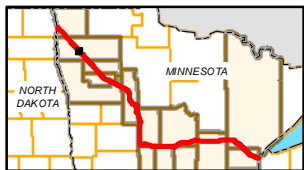
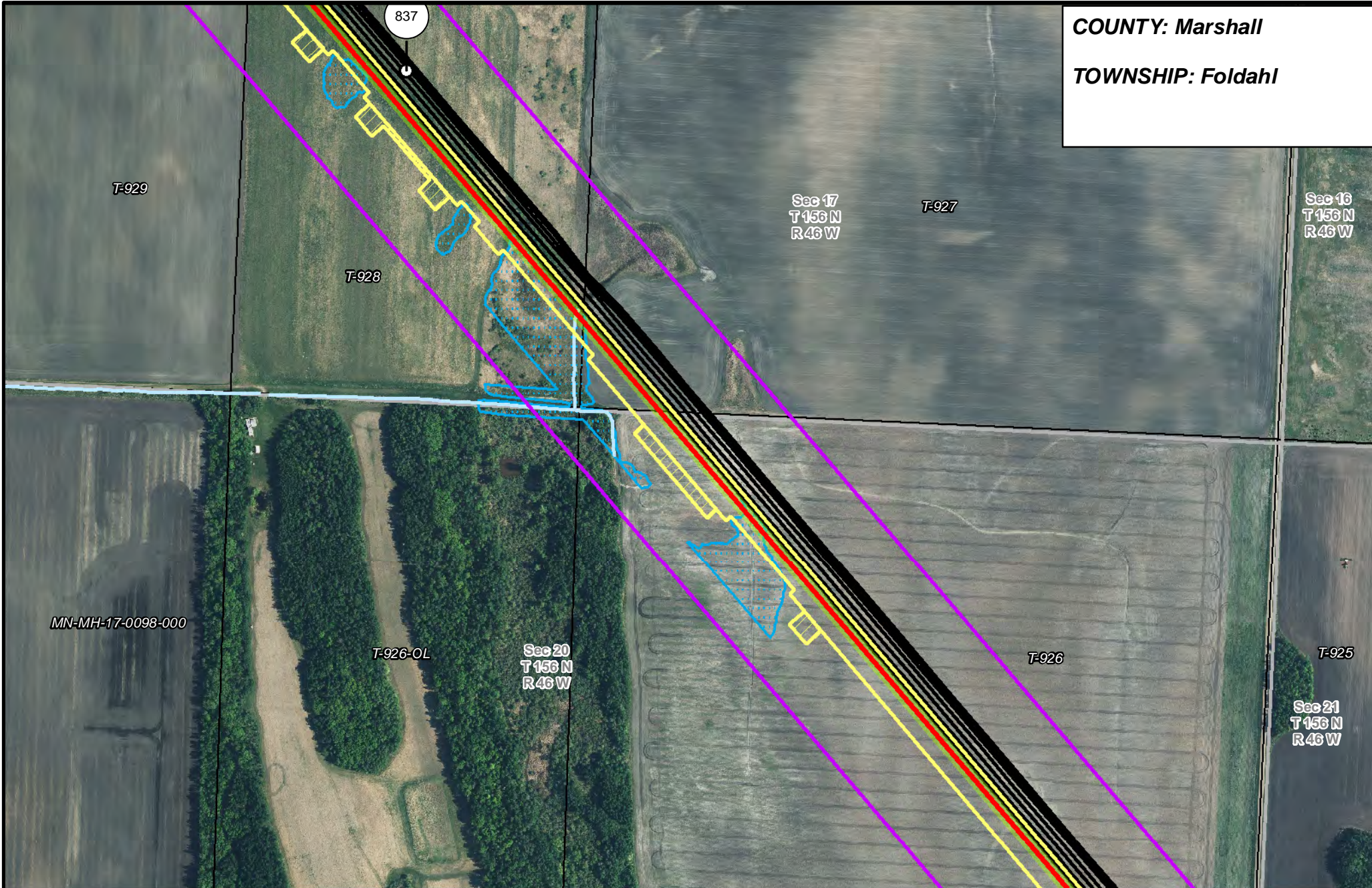


LINE 3 REPLACEMENT PIPELINE ROUTE

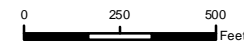
DRAWN: MLB CHECKED: --
 DATE: August 31, 2018 SCALE: 1:5,000
 Map 44 of 378

COUNTY: Marshall

TOWNSHIP: Foldahl



- | | | | |
|-----------------------|--------------------------------|----------------------|------------------------|
| PUC Designated Route | Mile Post | Surveyed Waterbodies | Tract Boundary |
| ROW | Temporary Workspace | ESA | MN Section Boundary |
| Line 3R Pipeline | Additional Temporary Workspace | Surveyed Wetlands | Township/City Boundary |
| Valve Location | Existing Enbridge Pipelines | NWI Wetlands | County Boundary |
| Enbridge Pump Station | Existing Electric Transmission | | |
| | Existing Third Party Pipelines | | |

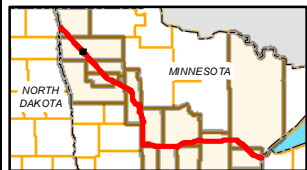
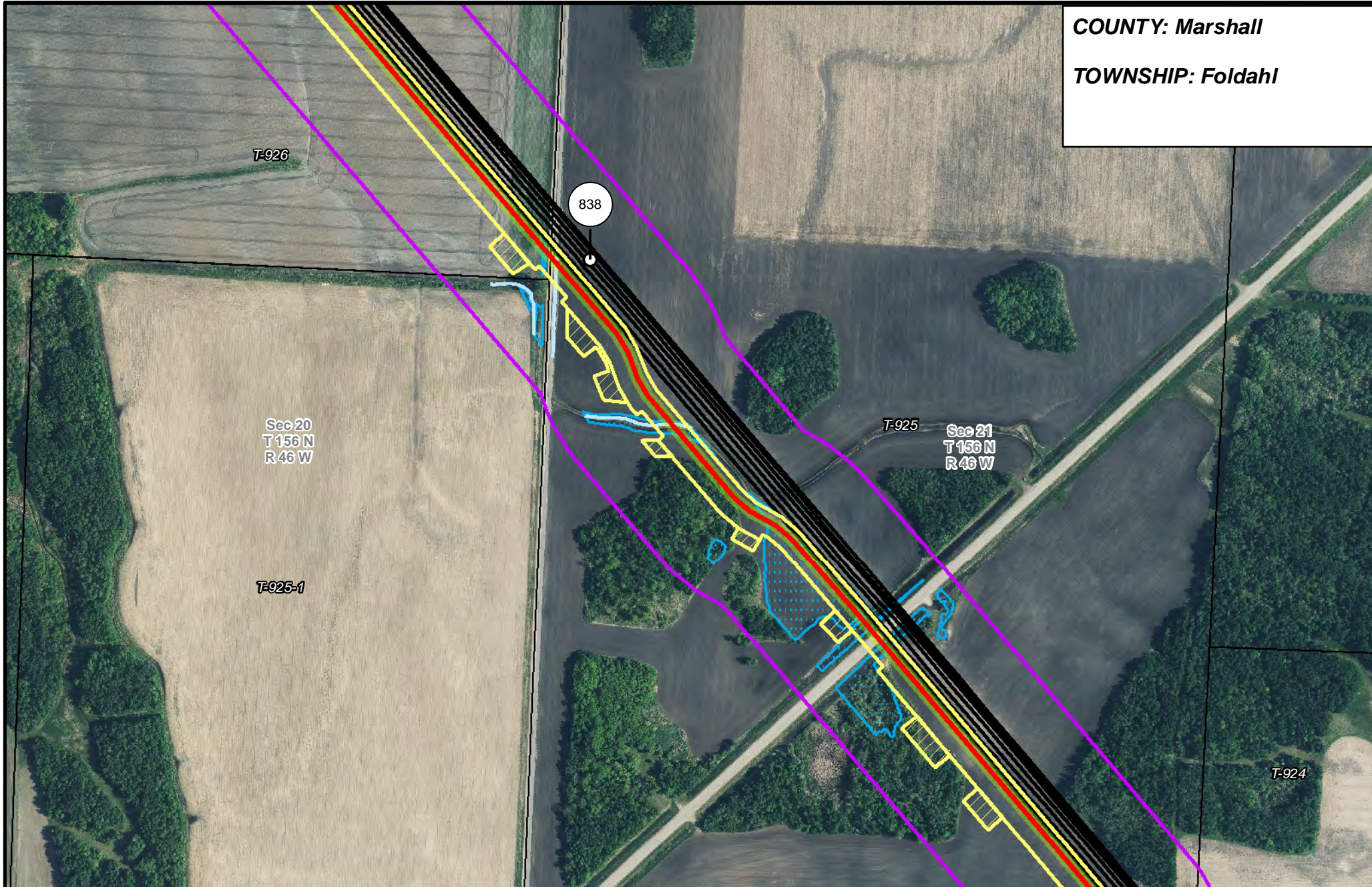


LINE 3 REPLACEMENT PIPELINE ROUTE

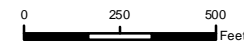
DRAWN: MLB CHECKED: --
DATE: August 31, 2018 SCALE: 1:5,000
Map 45 of 378

COUNTY: Marshall

TOWNSHIP: Foldahl



- | | | | |
|-----------------------|--------------------------------|----------------------|------------------------|
| PUC Designated Route | Mile Post | Surveyed Waterbodies | Tract Boundary |
| ROW | Temporary Workspace | ESA | MN Section Boundary |
| Line 3R Pipeline | Additional Temporary Workspace | Surveyed Wetlands | Township/City Boundary |
| Valve Location | Existing Enbridge Pipelines | NWI Wetlands | County Boundary |
| Enbridge Pump Station | Existing Electric Transmission | | |
| | Existing Third Party Pipelines | | |

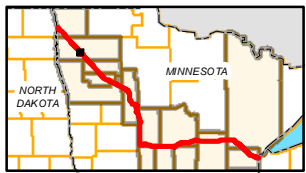
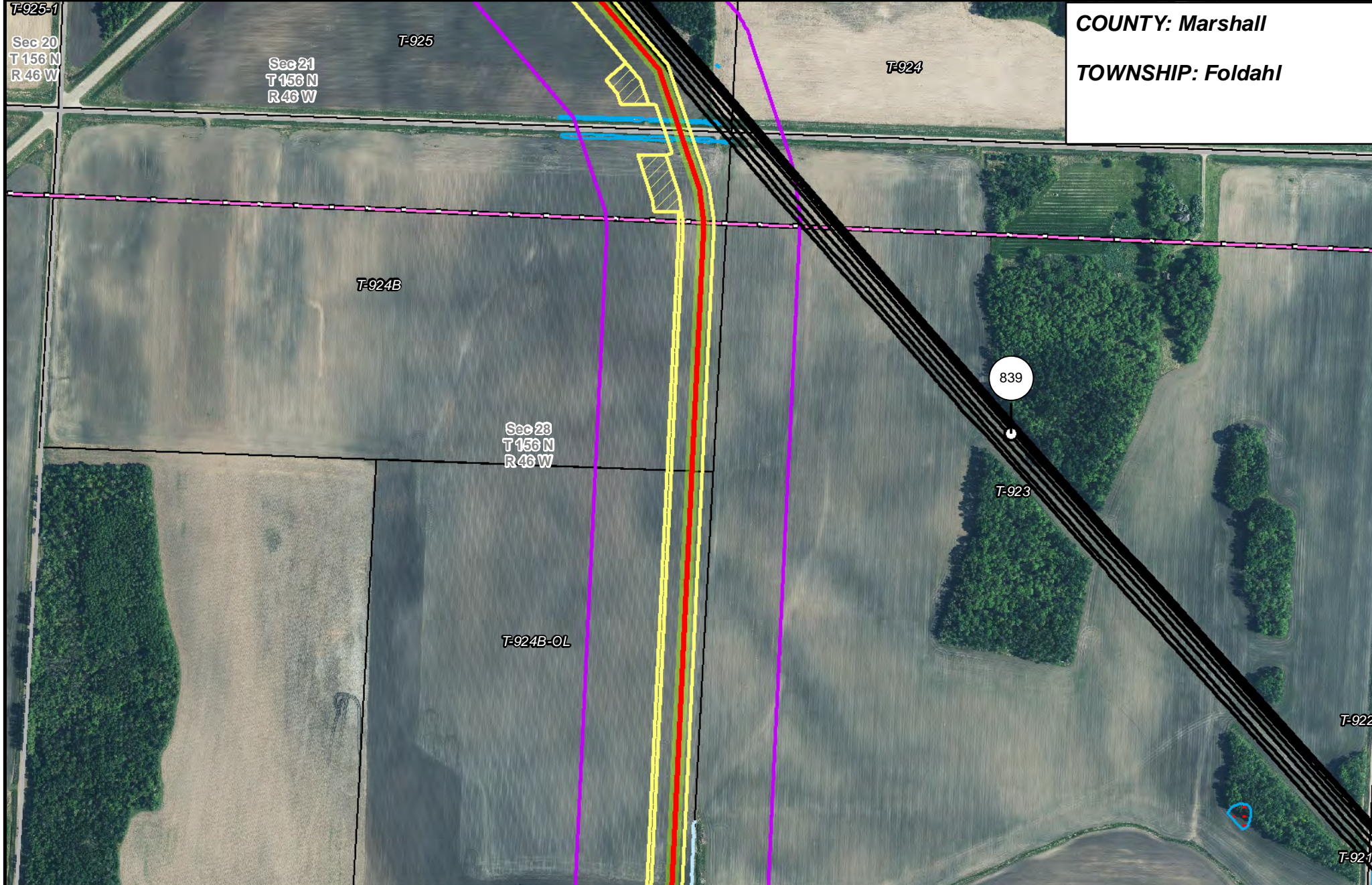


LINE 3 REPLACEMENT PIPELINE ROUTE

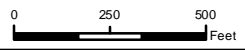
DRAWN: MLB CHECKED: --
DATE: August 31, 2018 SCALE: 1:5,000
Map 46 of 378

COUNTY: Marshall

TOWNSHIP: Foldahl



- PUC Designated Route
- ROW
- Line 3R Pipeline
- Valve Location
- Enbridge Pump Station
- Temporary Workspace
- Additional Temporary Workspace
- Existing Enbridge Pipelines
- Existing Electric Transmission
- Existing Third Party Pipelines
- Surveyed Waterbodies
- ESA
- Surveyed Wetlands
- NWI Wetlands
- Tract Boundary
- MN Section Boundary
- Township/City Boundary
- County Boundary
- Mile Post



LINE 3 REPLACEMENT PIPELINE ROUTE

DRAWN: MLB CHECKED: --
 DATE: August 31, 2018 SCALE: 1:5,000
 Map 47 of 378

COUNTY: Marshall

TOWNSHIP: Foldahl

Sec 23
T 156 N
R 46 W

T-924B-OL

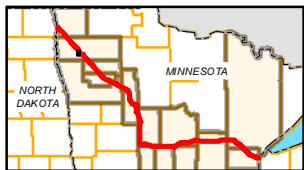
T-923

T-923-OLLL

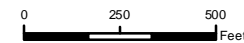
Sec 33
T 156 N
R 46 W

T-918A-OLL

T-918A-OL



- | | | | |
|-----------------------|--------------------------------|----------------------|------------------------|
| PUC Designated Route | Mile Post | Surveyed Waterbodies | Tract Boundary |
| ROW | Temporary Workspace | ESA | MN Section Boundary |
| Line 3R Pipeline | Additional Temporary Workspace | Surveyed Wetlands | Township/City Boundary |
| Valve Location | Existing Enbridge Pipelines | NWI Wetlands | County Boundary |
| Enbridge Pump Station | Existing Electric Transmission | | |
| | Existing Third Party Pipelines | | |



LINE 3 REPLACEMENT PIPELINE ROUTE

DRAWN: MLB CHECKED: --
DATE: August 31, 2018 SCALE: 1:5,000
Map 48 of 378

COUNTY: Marshall

TOWNSHIP: Foldahl

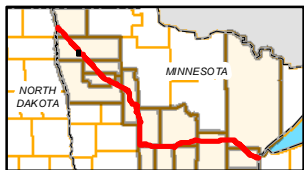
T-923-0111L

T-918A-011

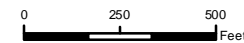
Sec 33
T 156 N
R 46 W

T-923-2

T-918A-2



- | | | | |
|-----------------------|--------------------------------|----------------------|------------------------|
| PUC Designated Route | Mile Post | Surveyed Waterbodies | Tract Boundary |
| ROW | Temporary Workspace | ESA | MN Section Boundary |
| Line 3R Pipeline | Additional Temporary Workspace | Surveyed Wetlands | Township/City Boundary |
| Valve Location | Existing Enbridge Pipelines | NWI Wetlands | County Boundary |
| Enbridge Pump Station | Existing Electric Transmission | | |
| | Existing Third Party Pipelines | | |



LINE 3 REPLACEMENT PIPELINE ROUTE

DRAWN: MLB CHECKED: --
DATE: August 31, 2018 SCALE: 1:5,000
Map 49 of 378

COUNTY: Marshall
TOWNSHIP: Foldahl & Comstock



T-923-2
 Sec 33
 T 156 N
 R 46 W

T-918A-2

17-0173-000

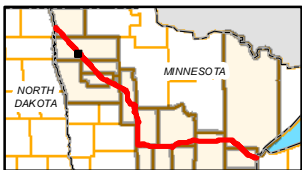
T-918A-3

T-918A-8

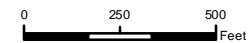
Sec 4
 T 155 N
 R 46 W

Sec 3
 T 155 N
 R 46 W

T-918A-7



- | | | | |
|-----------------------|--------------------------------|----------------------|------------------------|
| PUC Designated Route | Mile Post | Surveyed Waterbodies | Tract Boundary |
| ROW | Temporary Workspace | ESA | MN Section Boundary |
| Line 3R Pipeline | Additional Temporary Workspace | Surveyed Wetlands | Township/City Boundary |
| Valve Location | Existing Enbridge Pipelines | NWI Wetlands | County Boundary |
| Enbridge Pump Station | Existing Electric Transmission | | |
| | Existing Third Party Pipelines | | |



LINE 3 REPLACEMENT PIPELINE ROUTE

DRAWN: MLB CHECKED: --
 DATE: August 31, 2018 SCALE: 1:5,000
 Map 50 of 378

COUNTY: Marshall
TOWNSHIP: Comstock

MN-MH-09-0014-001

T-918A-7

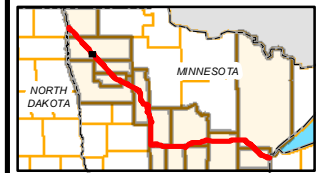
Sec 3
T 153
NR 46W

T-918A-4

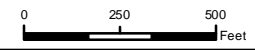
T-918A-5

T-918A-4

T-918A-6



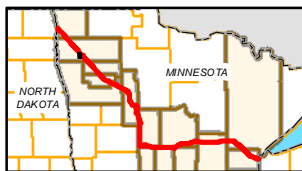
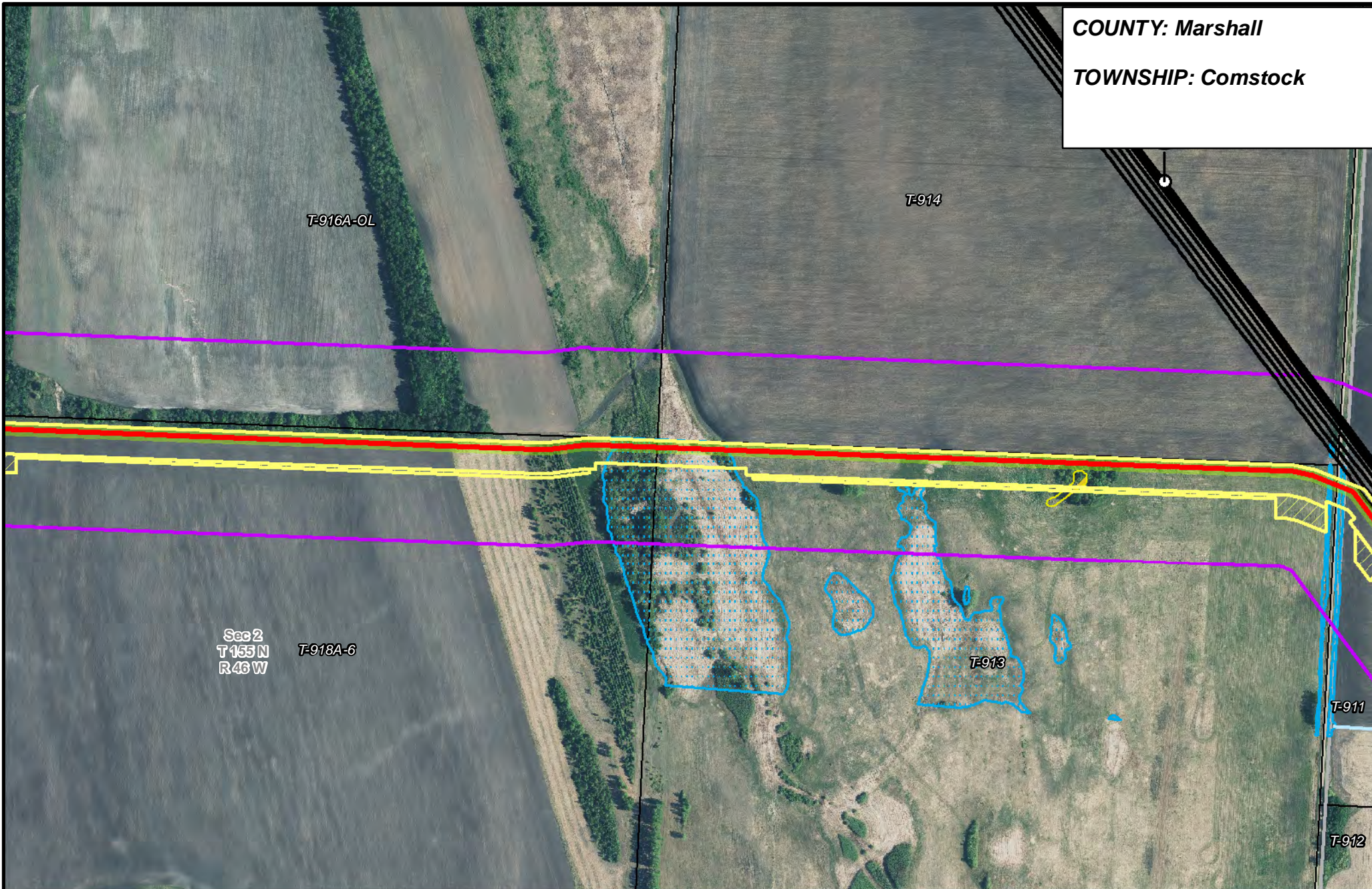
- | | | | |
|-----------------------|--------------------------------|----------------------|------------------------|
| PUC Designated Route | Mile Post | Surveyed Waterbodies | Tract Boundary |
| ROW | Temporary Workspace | ESA | MN Section Boundary |
| Line 3R Pipeline | Additional Temporary Workspace | Surveyed Wetlands | Township/City Boundary |
| Valve Location | Existing Enbridge Pipelines | NWI Wetlands | County Boundary |
| Enbridge Pump Station | Existing Electric Transmission | | |
| | Existing Third Party Pipelines | | |



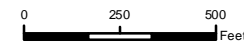
LINE 3 REPLACEMENT PIPELINE ROUTE

DRAWN: MLB CHECKED: --
 DATE: August 31, 2018 SCALE: 1:5,000
 Map 51 of 378

COUNTY: Marshall
TOWNSHIP: Comstock



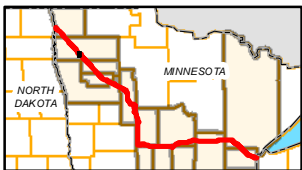
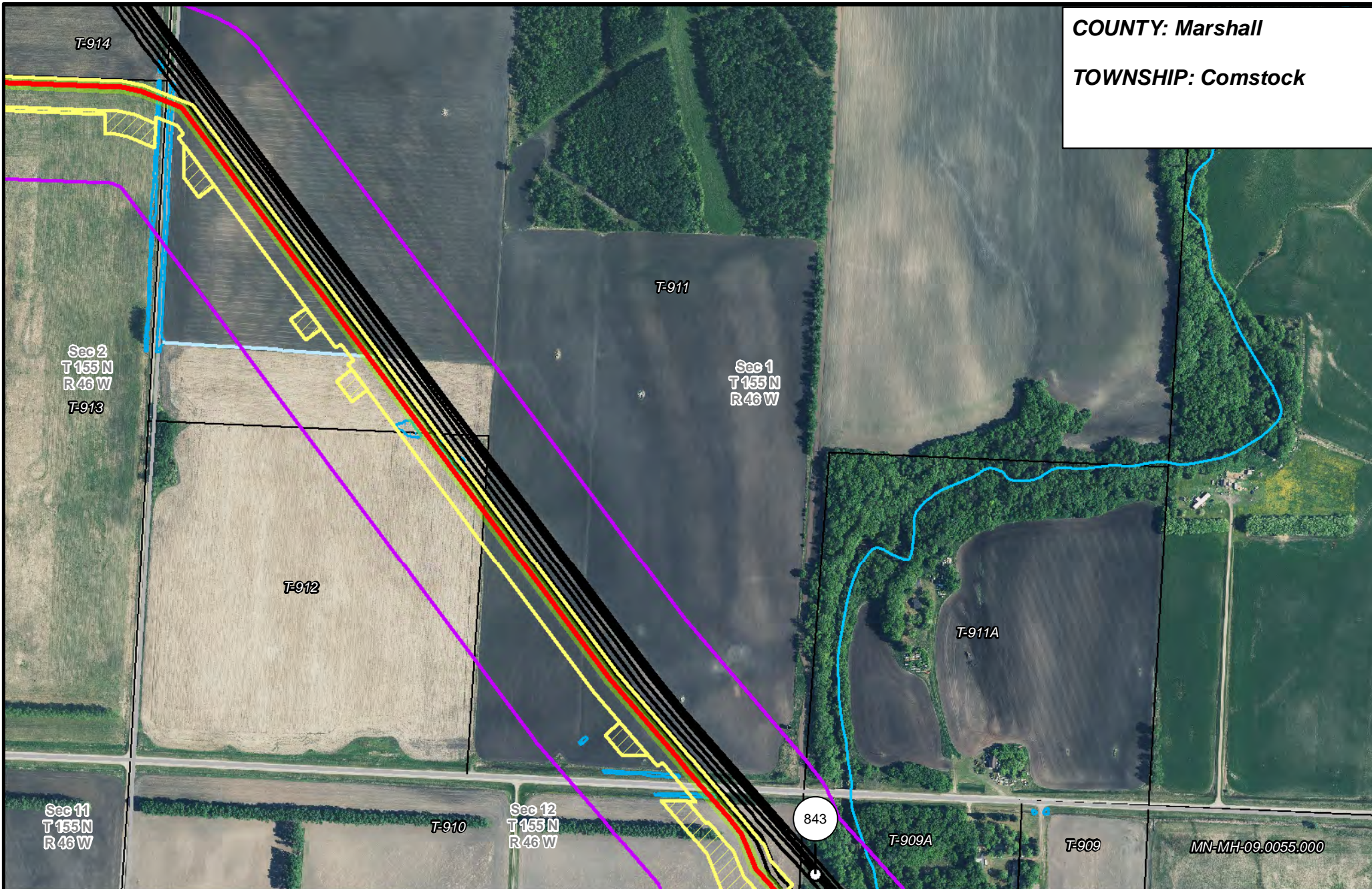
- | | | | |
|-----------------------|--------------------------------|----------------------|------------------------|
| PUC Designated Route | Mile Post | Surveyed Waterbodies | Tract Boundary |
| ROW | Temporary Workspace | ESA | MN Section Boundary |
| Line 3R Pipeline | Additional Temporary Workspace | Surveyed Wetlands | Township/City Boundary |
| Valve Location | Existing Enbridge Pipelines | NWI Wetlands | County Boundary |
| Enbridge Pump Station | Existing Electric Transmission | | |
| | Existing Third Party Pipelines | | |



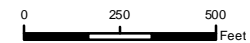
**LINE 3 REPLACEMENT
PIPELINE ROUTE**

DRAWN: MLB CHECKED: --
DATE: August 31, 2018 SCALE: 1:5,000
Map 52 of 378

COUNTY: Marshall
TOWNSHIP: Comstock



- | | | | |
|-----------------------|--------------------------------|----------------------|------------------------|
| PUC Designated Route | Mile Post | Surveyed Waterbodies | Tract Boundary |
| ROW | Temporary Workspace | ESA | MN Section Boundary |
| Line 3R Pipeline | Additional Temporary Workspace | Surveyed Wetlands | Township/City Boundary |
| Valve Location | Existing Enbridge Pipelines | NWI Wetlands | County Boundary |
| Enbridge Pump Station | Existing Electric Transmission | | |
| | Existing Third Party Pipelines | | |

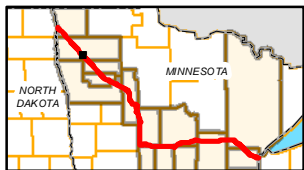
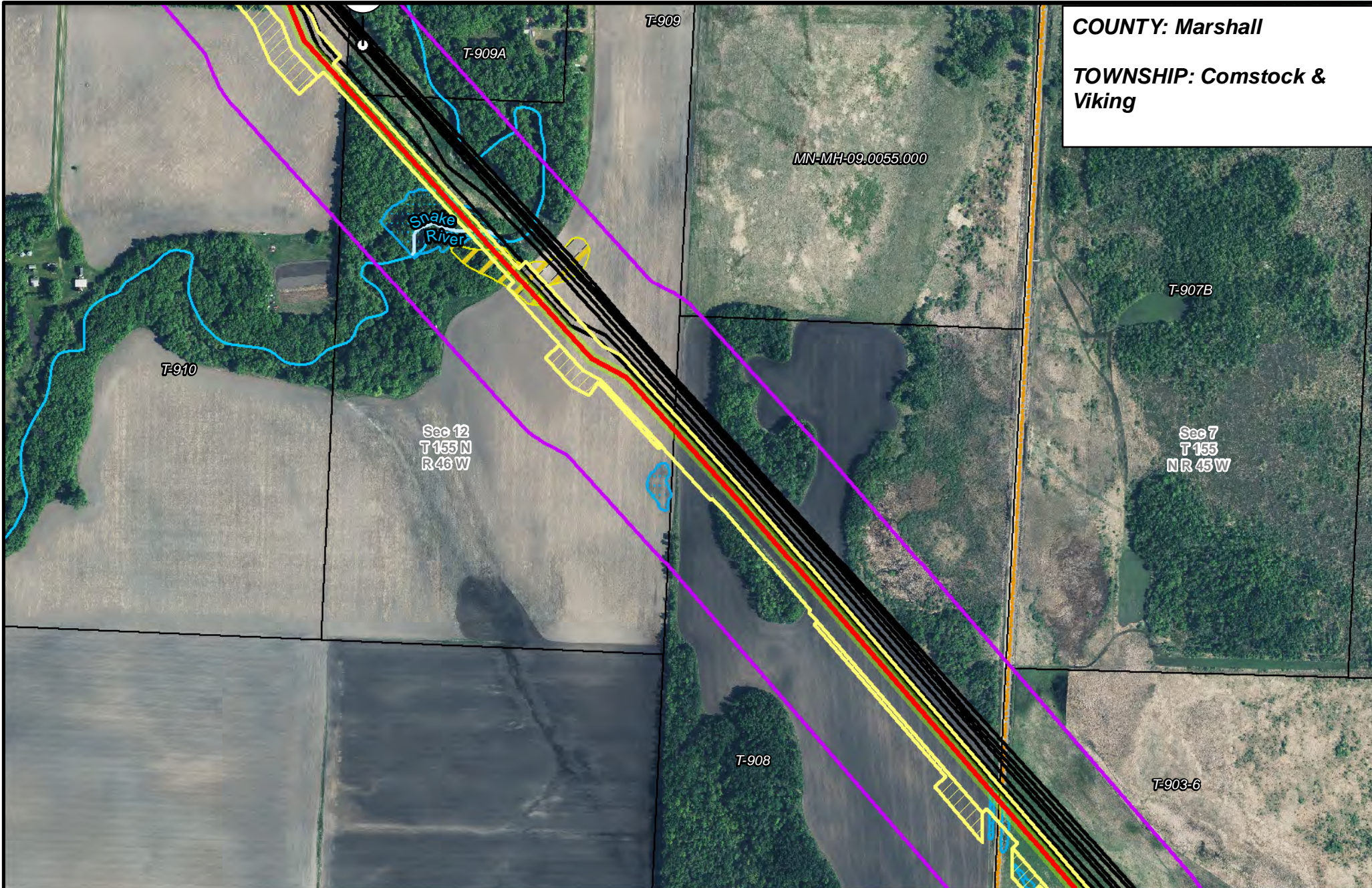


LINE 3 REPLACEMENT PIPELINE ROUTE

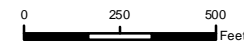
DRAWN: MLB CHECKED: --
 DATE: August 31, 2018 SCALE: 1:5,000
 Map 53 of 378

COUNTY: Marshall

TOWNSHIP: Comstock & Viking



- | | | | |
|-----------------------|--------------------------------|----------------------|------------------------|
| PUC Designated Route | Mile Post | Surveyed Waterbodies | Tract Boundary |
| ROW | Temporary Workspace | ESA | MN Section Boundary |
| Line 3R Pipeline | Additional Temporary Workspace | Surveyed Wetlands | Township/City Boundary |
| Valve Location | Existing Enbridge Pipelines | NWI Wetlands | County Boundary |
| Enbridge Pump Station | Existing Electric Transmission | | |
| | Existing Third Party Pipelines | | |

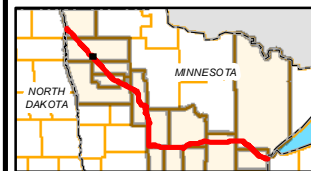
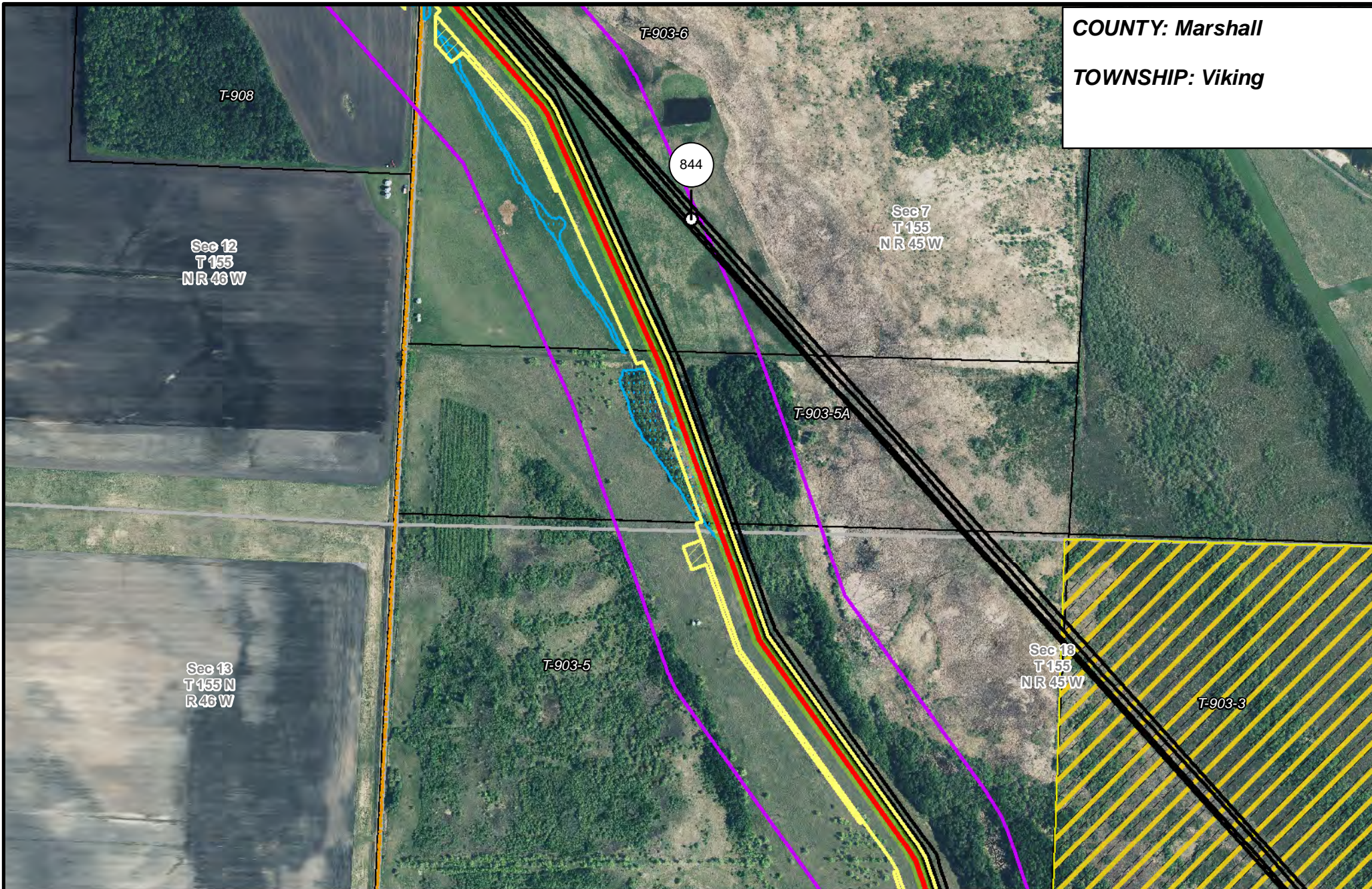


LINE 3 REPLACEMENT PIPELINE ROUTE

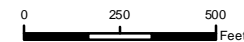
DRAWN: MLB CHECKED: --
DATE: August 31, 2018 SCALE: 1:5,000
Map 54 of 378

COUNTY: Marshall

TOWNSHIP: Viking



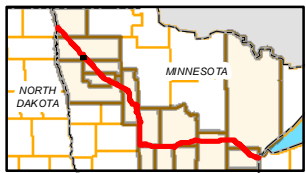
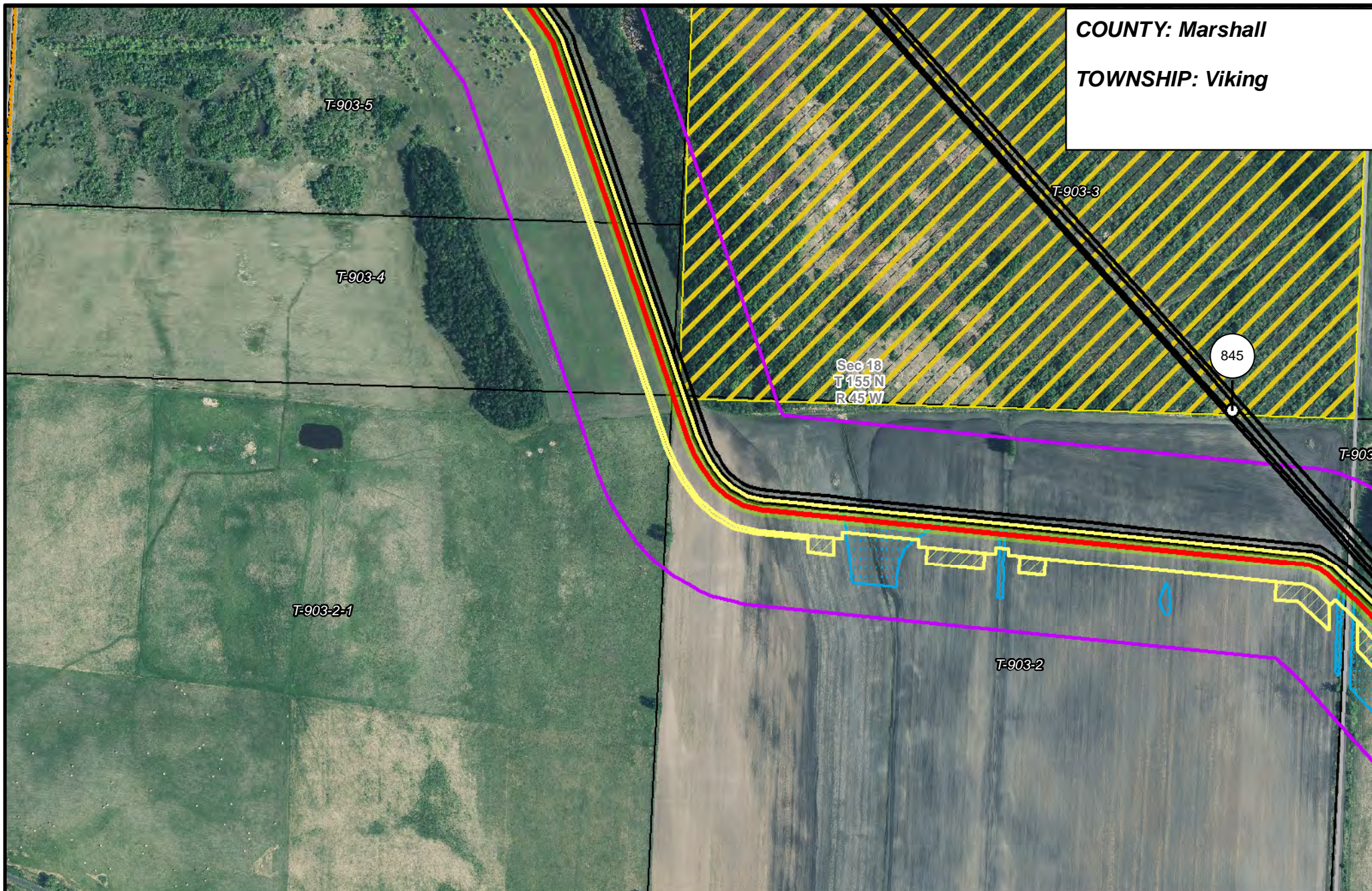
- PUC Designated Route
- ROW
- Line 3R Pipeline
- Valve Location
- Enbridge Pump Station
- Mile Post
- Temporary Workspace
- Additional Temporary Workspace
- Existing Enbridge Pipelines
- Existing Electric Transmission
- Existing Third Party Pipelines
- Surveyed Waterbodies
- ESA
- Surveyed Wetlands
- NWI Wetlands
- Tract Boundary
- MN Section Boundary
- Township/City Boundary
- County Boundary



LINE 3 REPLACEMENT PIPELINE ROUTE

DRAWN: MLB CHECKED: --
DATE: August 31, 2018 SCALE: 1:5,000
Map 55 of 378

COUNTY: Marshall
TOWNSHIP: Viking



- | | | | |
|-----------------------|--------------------------------|----------------------|------------------------|
| PUC Designated Route | Mile Post | Surveyed Waterbodies | Tract Boundary |
| ROW | Temporary Workspace | ESA | MN Section Boundary |
| Line 3R Pipeline | Additional Temporary Workspace | Surveyed Wetlands | Township/City Boundary |
| Valve Location | Existing Enbridge Pipelines | NWI Wetlands | County Boundary |
| Enbridge Pump Station | Existing Electric Transmission | | |
| | Existing Third Party Pipelines | | |

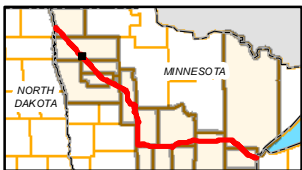
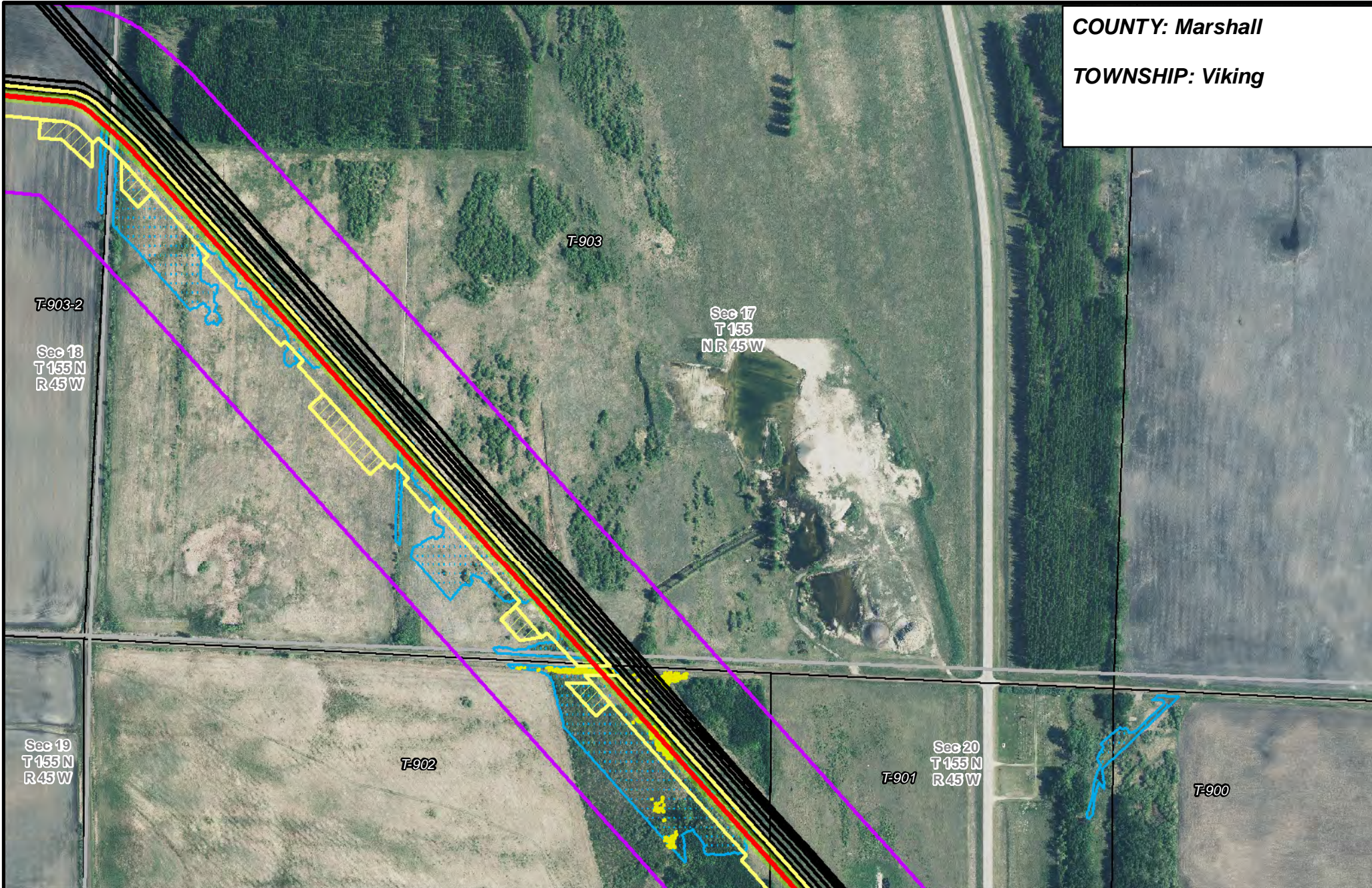


LINE 3 REPLACEMENT PIPELINE ROUTE

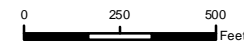
DRAWN: MLB CHECKED: --
 DATE: August 31, 2018 SCALE: 1:5,000
 Map 56 of 378

COUNTY: Marshall

TOWNSHIP: Viking



- | | | | |
|-----------------------|--------------------------------|----------------------|------------------------|
| PUC Designated Route | Mile Post | Surveyed Waterbodies | Tract Boundary |
| ROW | Temporary Workspace | ESA | MN Section Boundary |
| Line 3R Pipeline | Additional Temporary Workspace | Surveyed Wetlands | Township/City Boundary |
| Valve Location | Existing Enbridge Pipelines | NWI Wetlands | County Boundary |
| Enbridge Pump Station | Existing Electric Transmission | | |
| | Existing Third Party Pipelines | | |

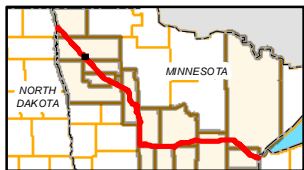
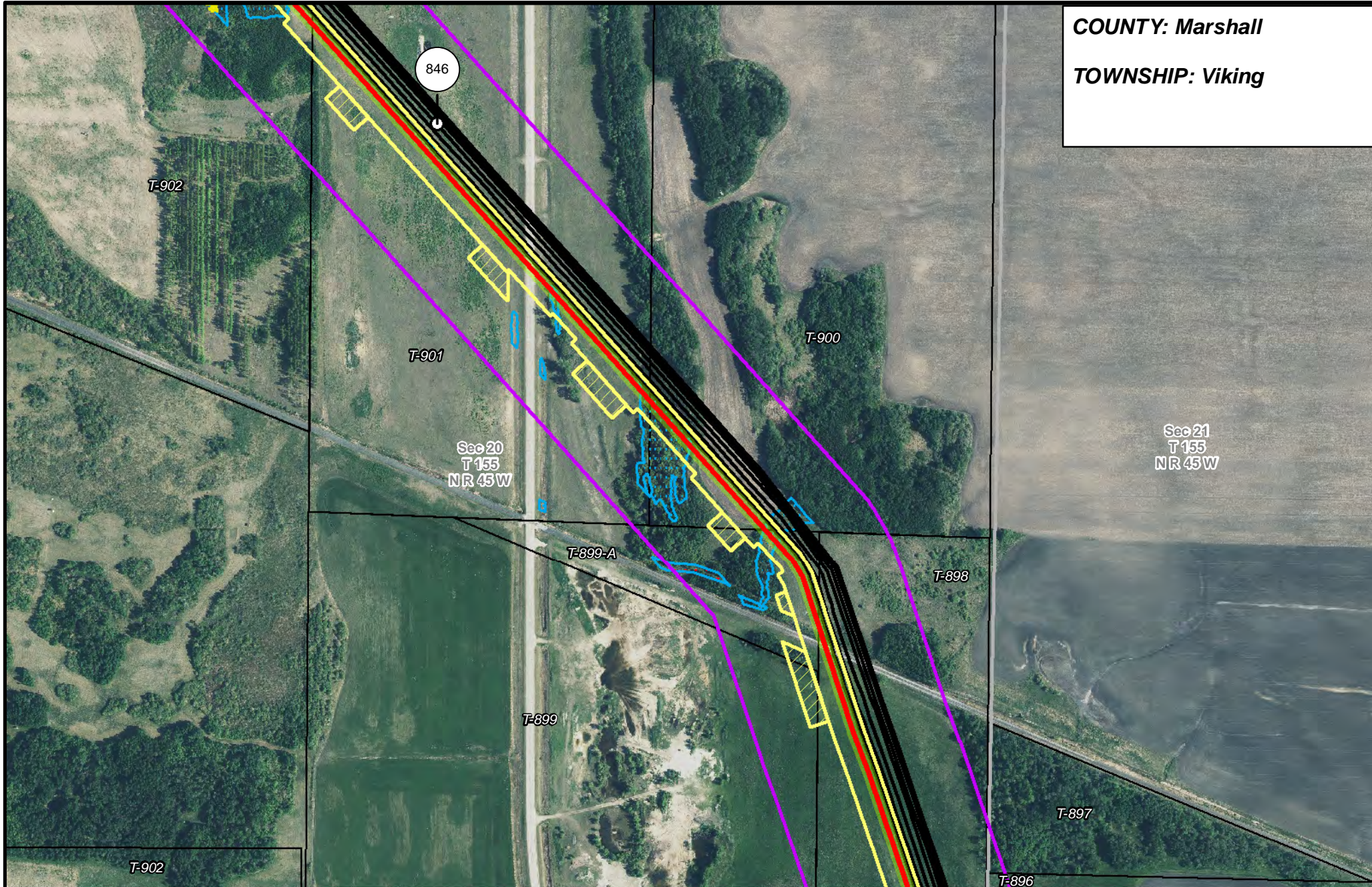


LINE 3 REPLACEMENT PIPELINE ROUTE

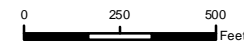
DRAWN: MLB CHECKED: --
DATE: August 31, 2018 SCALE: 1:5,000
Map 57 of 378

COUNTY: Marshall

TOWNSHIP: Viking



- | | | | |
|--------------------------------|--------------------------------|----------------------|------------------------|
| PUC Designated Route | Mile Post | Surveyed Waterbodies | Tract Boundary |
| ROW | Temporary Workspace | ESA | MN Section Boundary |
| Line 3R Pipeline | Additional Temporary Workspace | Surveyed Wetlands | Township/City Boundary |
| Valve Location | Existing Enbridge Pipelines | NWI Wetlands | County Boundary |
| Enbridge Pump Station | Existing Electric Transmission | | |
| Existing Third Party Pipelines | | | |

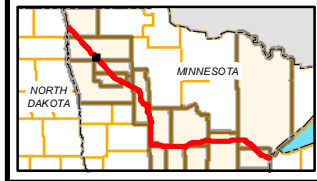
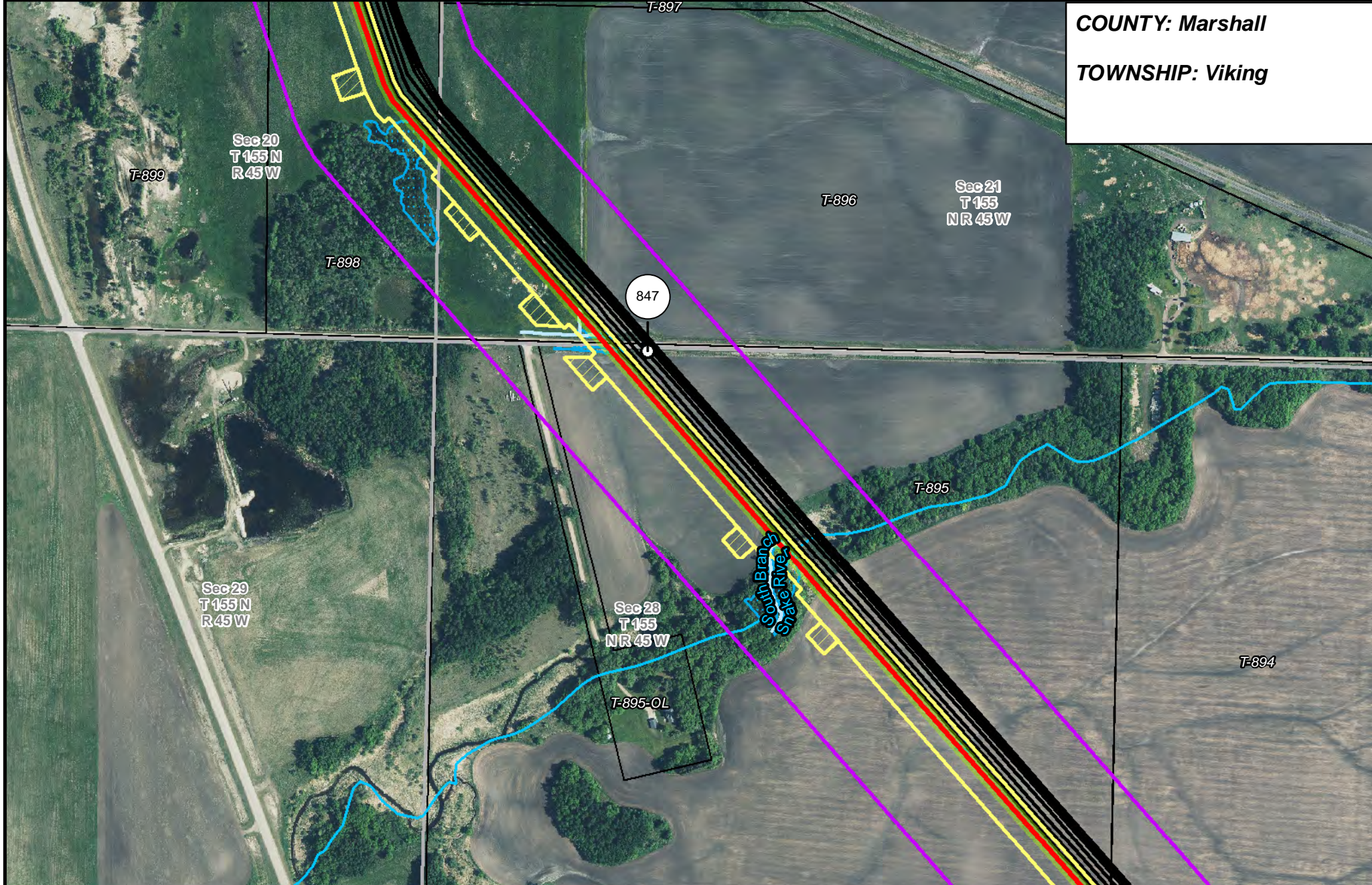


LINE 3 REPLACEMENT PIPELINE ROUTE

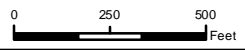
DRAWN: MLB CHECKED: --
DATE: August 31, 2018 SCALE: 1:5,000
Map 58 of 378

COUNTY: Marshall

TOWNSHIP: Viking



- PUC Designated Route
- Mile Post
- Surveyed Waterbodies
- Tract Boundary
- ROW
- Temporary Workspace
- ESA
- MN Section Boundary
- Line 3R Pipeline
- Additional Temporary Workspace
- Surveyed Wetlands
- Township/City Boundary
- Valve Location
- Existing Enbridge Pipelines
- NWI Wetlands
- County Boundary
- Enbridge Pump Station
- Existing Electric Transmission
- Existing Third Party Pipelines

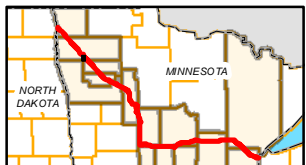
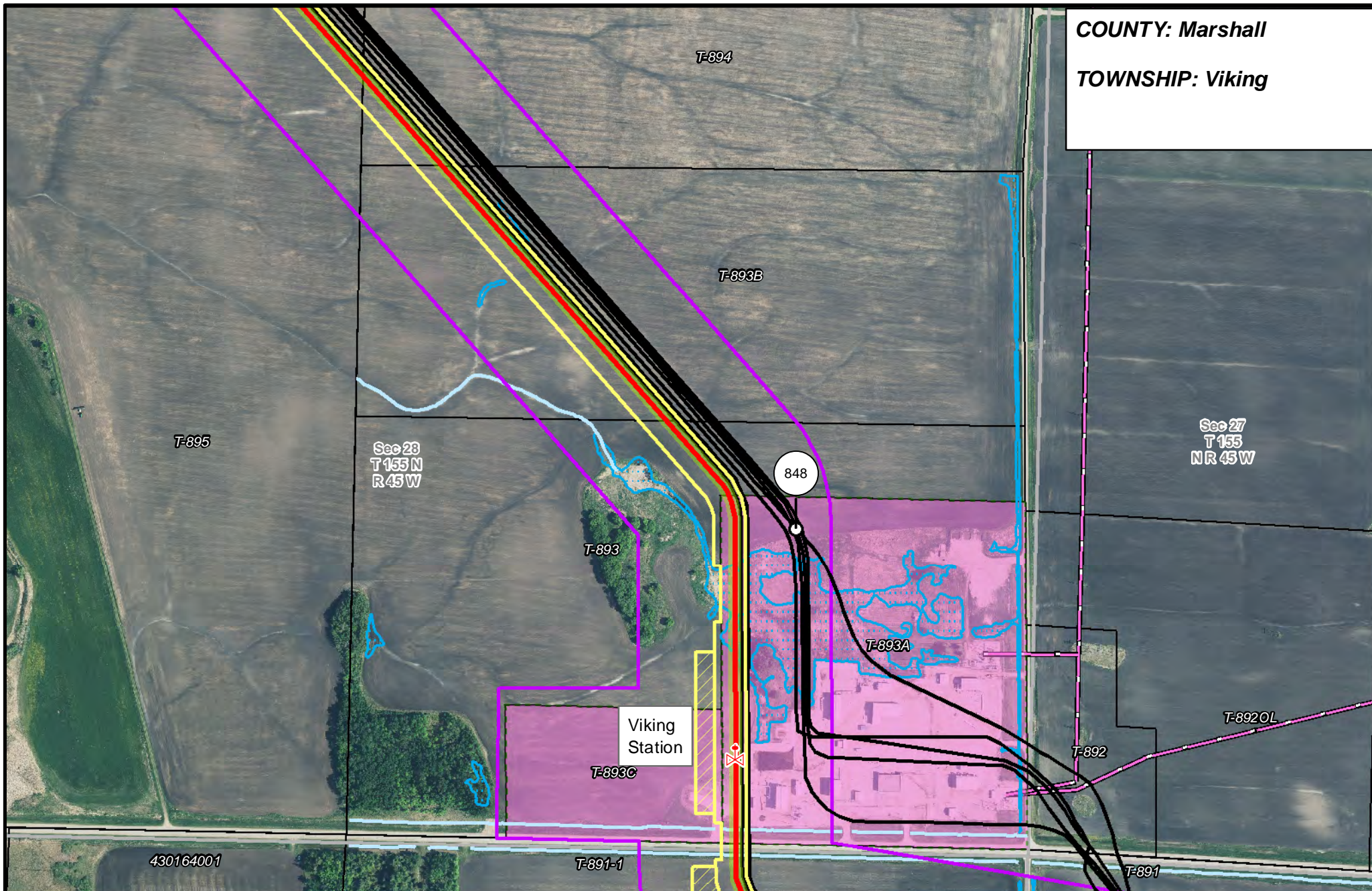


LINE 3 REPLACEMENT PIPELINE ROUTE

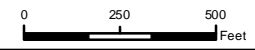
DRAWN: MLB CHECKED: --
 DATE: August 31, 2018 SCALE: 1:5,000
 Map 59 of 378

COUNTY: Marshall

TOWNSHIP: Viking



- PUC Designated Route
- Line 3R Pipeline
- Valve Location
- ROW
- Temporary Workspace
- Additional Temporary Workspace
- Existing Enbridge Pipelines
- Existing Electric Transmission
- Existing Third Party Pipelines
- Surveyed Waterbodies
- ESA
- Surveyed Wetlands
- NWI Wetlands
- Tract Boundary
- MN Section Boundary
- Township/City Boundary
- County Boundary
- Mile Post

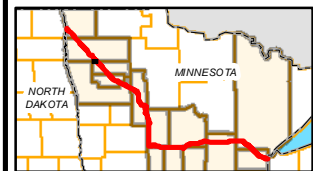
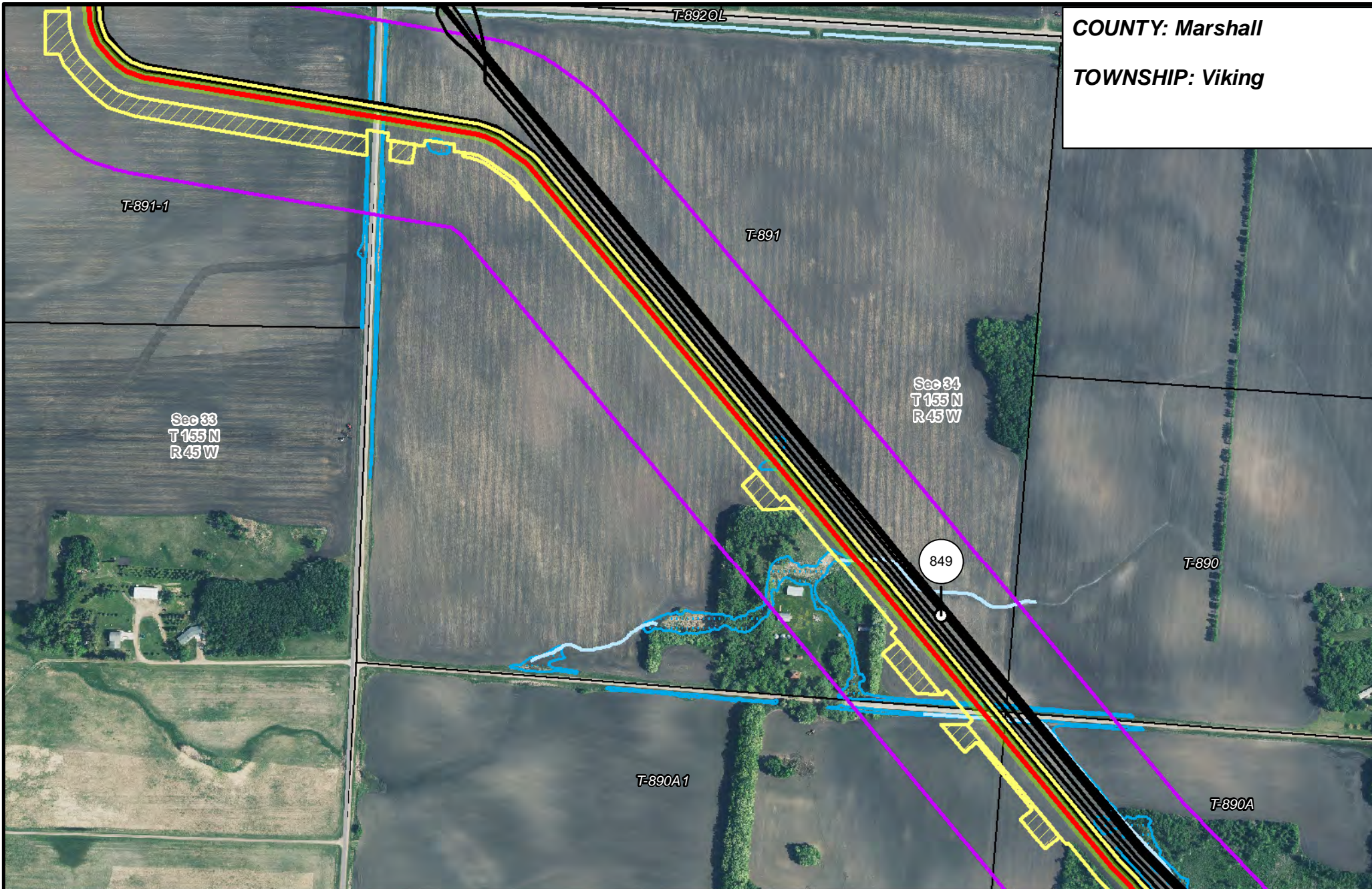


LINE 3 REPLACEMENT PIPELINE ROUTE

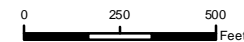
DRAWN: MLB CHECKED: --
DATE: August 31, 2018 SCALE: 1:5,000
Map 60 of 378

COUNTY: Marshall

TOWNSHIP: Viking



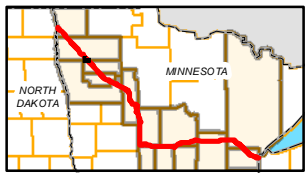
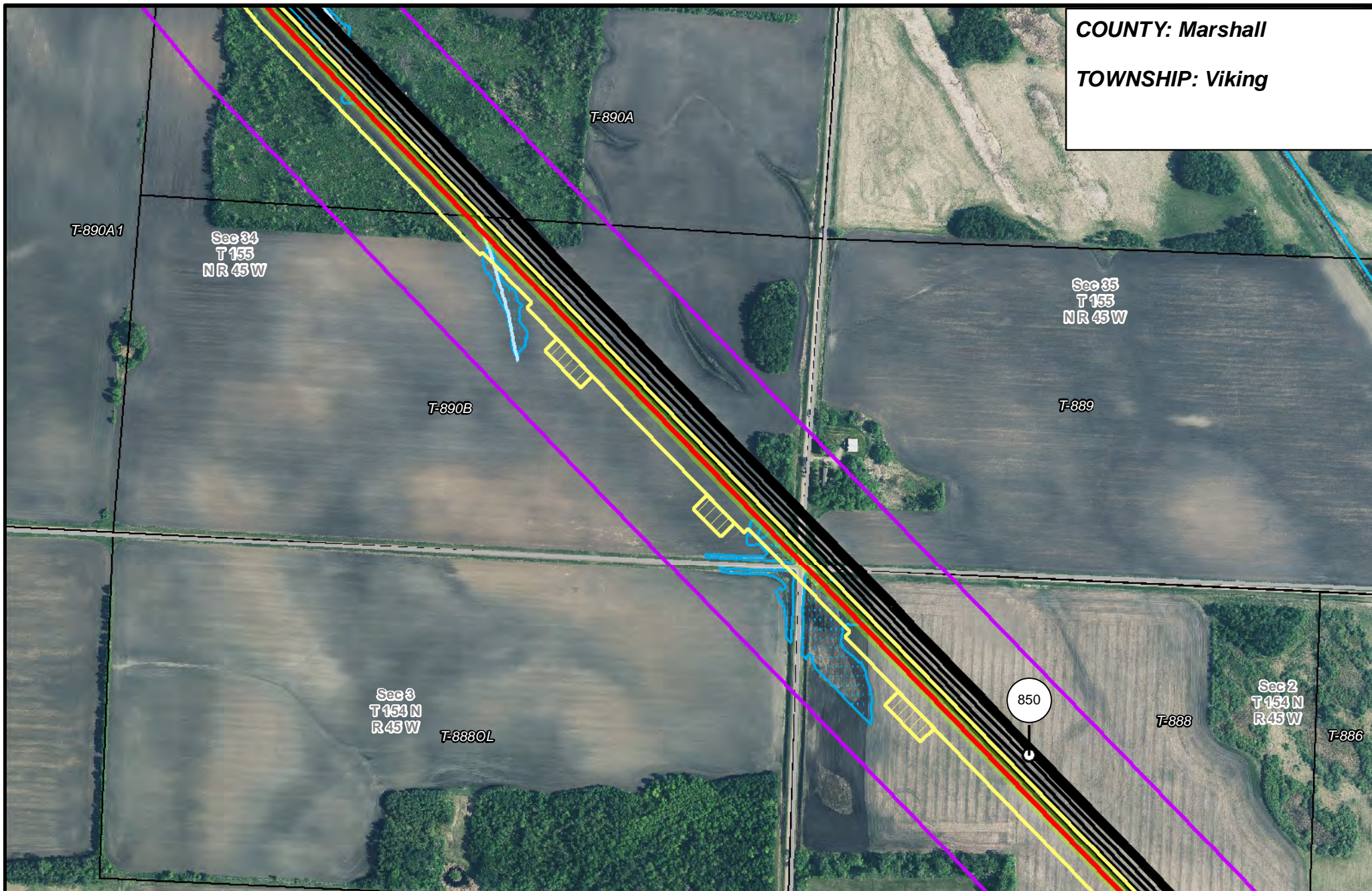
- | | | | |
|--------------------------------|--------------------------------|----------------------|------------------------|
| PUC Designated Route | Mile Post | Surveyed Waterbodies | Tract Boundary |
| ROW | Temporary Workspace | ESA | MN Section Boundary |
| Line 3R Pipeline | Additional Temporary Workspace | Surveyed Wetlands | Township/City Boundary |
| Valve Location | Existing Enbridge Pipelines | NWI Wetlands | County Boundary |
| Enbridge Pump Station | Existing Electric Transmission | | |
| Existing Third Party Pipelines | | | |



LINE 3 REPLACEMENT PIPELINE ROUTE

DRAWN: MLB CHECKED: --
DATE: August 31, 2018 SCALE: 1:5,000
Map 61 of 378

COUNTY: Marshall
TOWNSHIP: Viking



- | | | | |
|-----------------------|--------------------------------|----------------------|------------------------|
| PUC Designated Route | Mile Post | Surveyed Waterbodies | Tract Boundary |
| ROW | Temporary Workspace | ESA | MN Section Boundary |
| Line 3R Pipeline | Additional Temporary Workspace | Surveyed Wetlands | Township/City Boundary |
| Valve Location | Existing Enbridge Pipelines | NWI Wetlands | County Boundary |
| Enbridge Pump Station | Existing Electric Transmission | | |
| | Existing Third Party Pipelines | | |

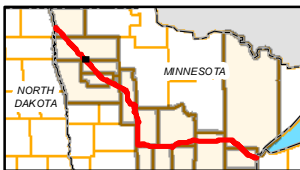
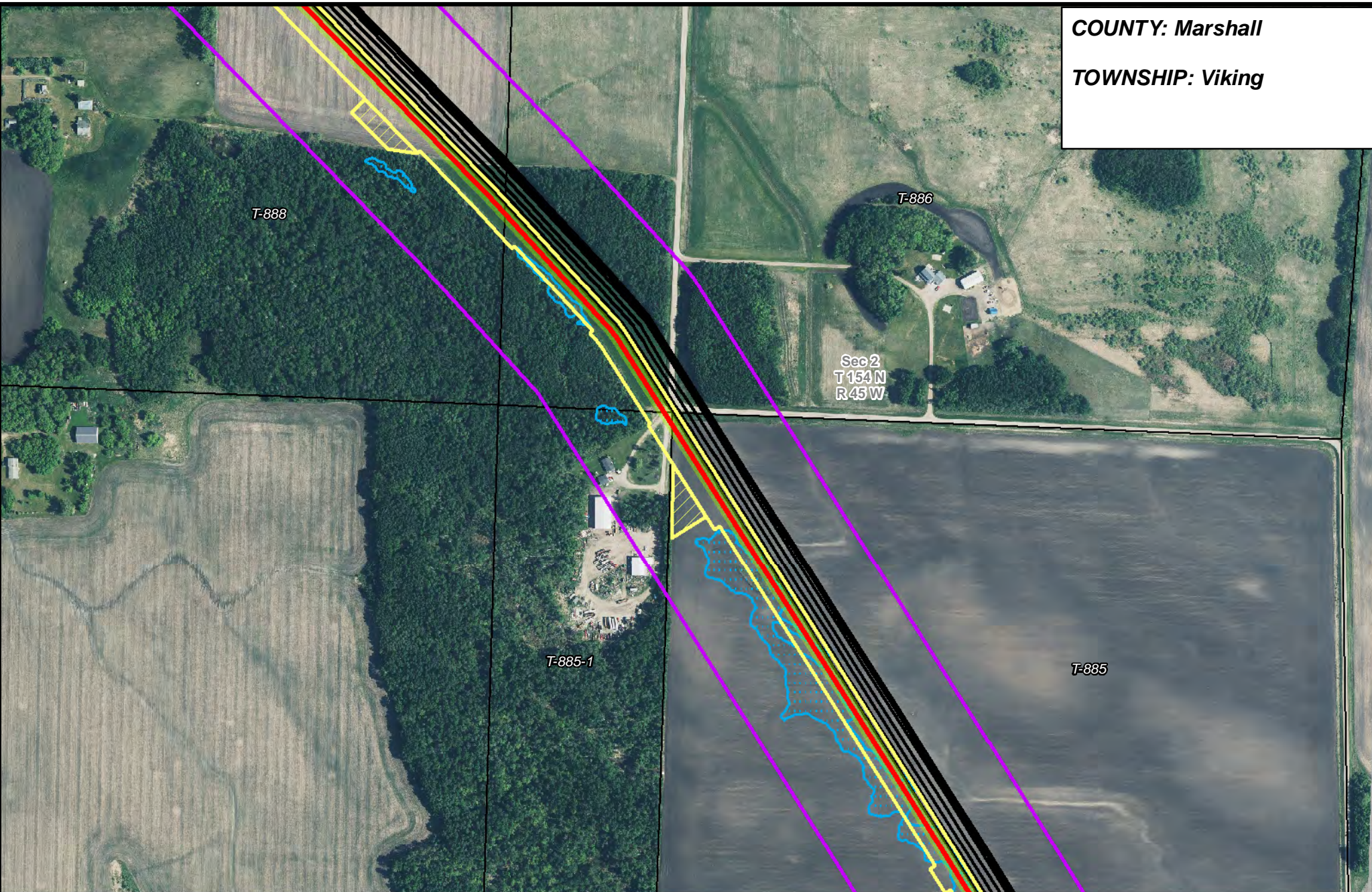


LINE 3 REPLACEMENT PIPELINE ROUTE

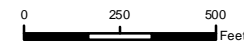
DRAWN: MLB CHECKED: --
 DATE: August 31, 2018 SCALE: 1:5,000
 Map 62 of 378

COUNTY: Marshall

TOWNSHIP: Viking



- | | | | |
|-----------------------|--------------------------------|----------------------|------------------------|
| PUC Designated Route | Mile Post | Surveyed Waterbodies | Tract Boundary |
| ROW | Temporary Workspace | ESA | MN Section Boundary |
| Line 3R Pipeline | Additional Temporary Workspace | Surveyed Wetlands | Township/City Boundary |
| Valve Location | Existing Enbridge Pipelines | NWI Wetlands | County Boundary |
| Enbridge Pump Station | Existing Electric Transmission | | |
| | Existing Third Party Pipelines | | |



LINE 3 REPLACEMENT PIPELINE ROUTE

DRAWN: MLB CHECKED: --
DATE: August 31, 2018 SCALE: 1:5,000
Map 63 of 378