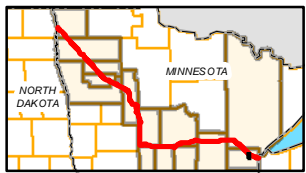
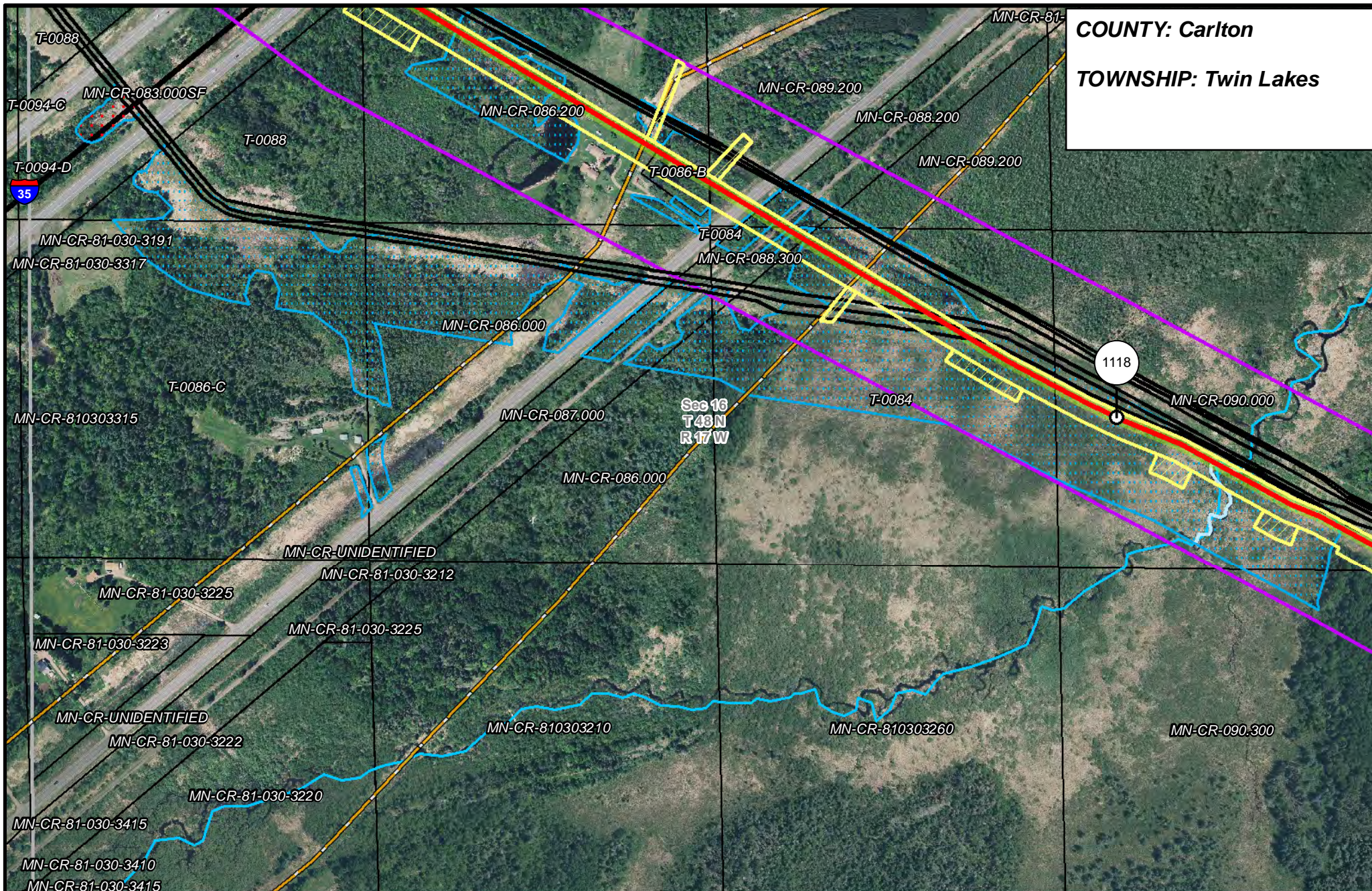
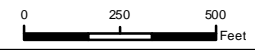


COUNTY: Carlton
TOWNSHIP: Twin Lakes



- | | | | |
|-----------------------|--------------------------------|----------------------|------------------------|
| PUC Designated Route | Mile Post | Surveyed Waterbodies | Tract Boundary |
| ROW | Temporary Workspace | ESA | MN Section Boundary |
| Line 3R Pipeline | Additional Temporary Workspace | Surveyed Wetlands | Township/City Boundary |
| Valve Location | Existing Enbridge Pipelines | NWI Wetlands | County Boundary |
| Enbridge Pump Station | Existing Electric Transmission | | |
| | Existing Third Party Pipelines | | |

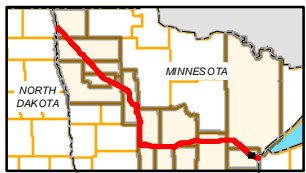
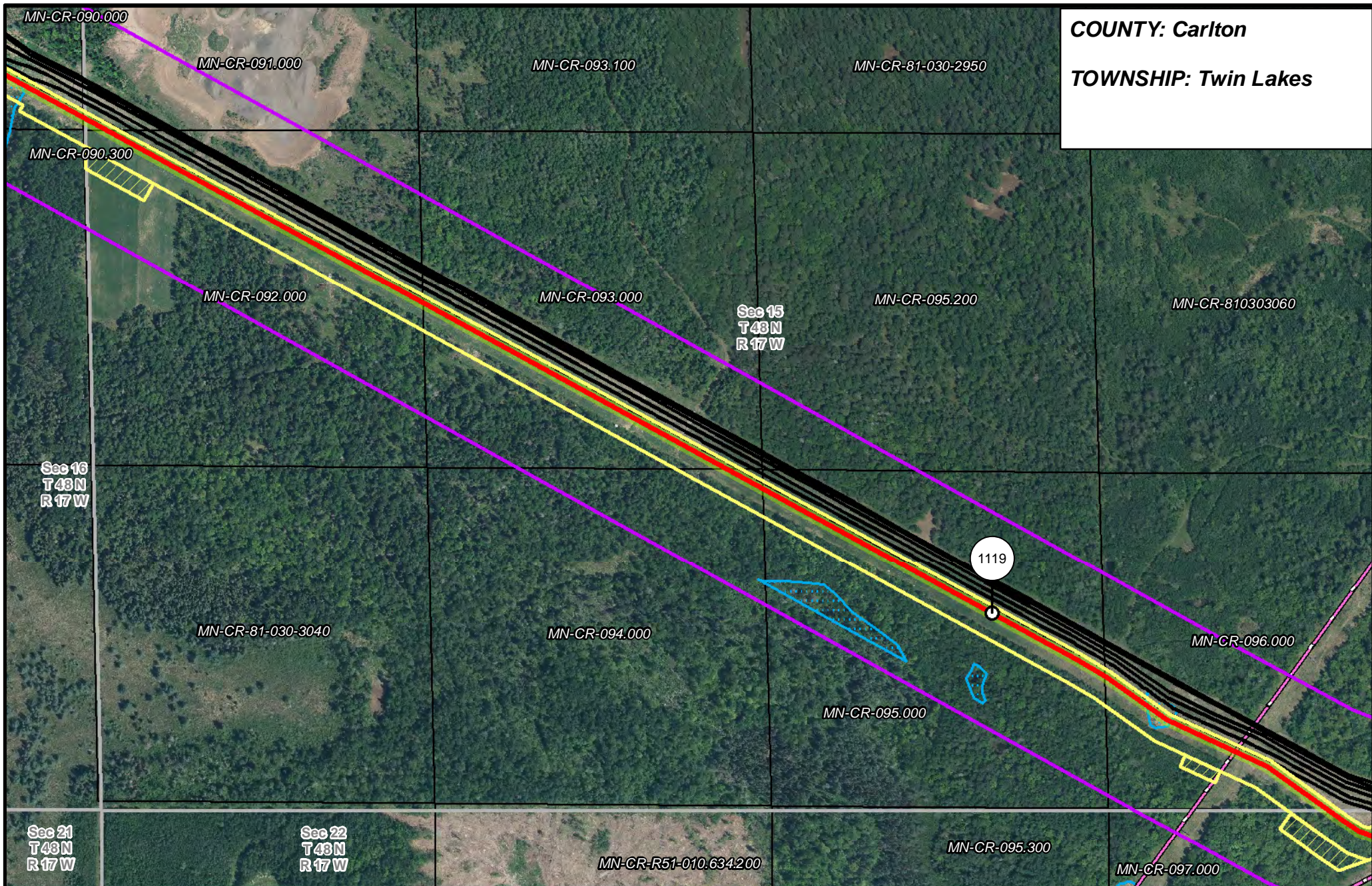


LINE 3 REPLACEMENT PIPELINE ROUTE

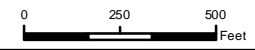
DRAWN: MLB CHECKED: ...
 DATE: August 31, 2018 SCALE: 1:5,000

Map 367 of 378

COUNTY: Carlton
TOWNSHIP: Twin Lakes



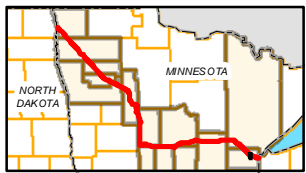
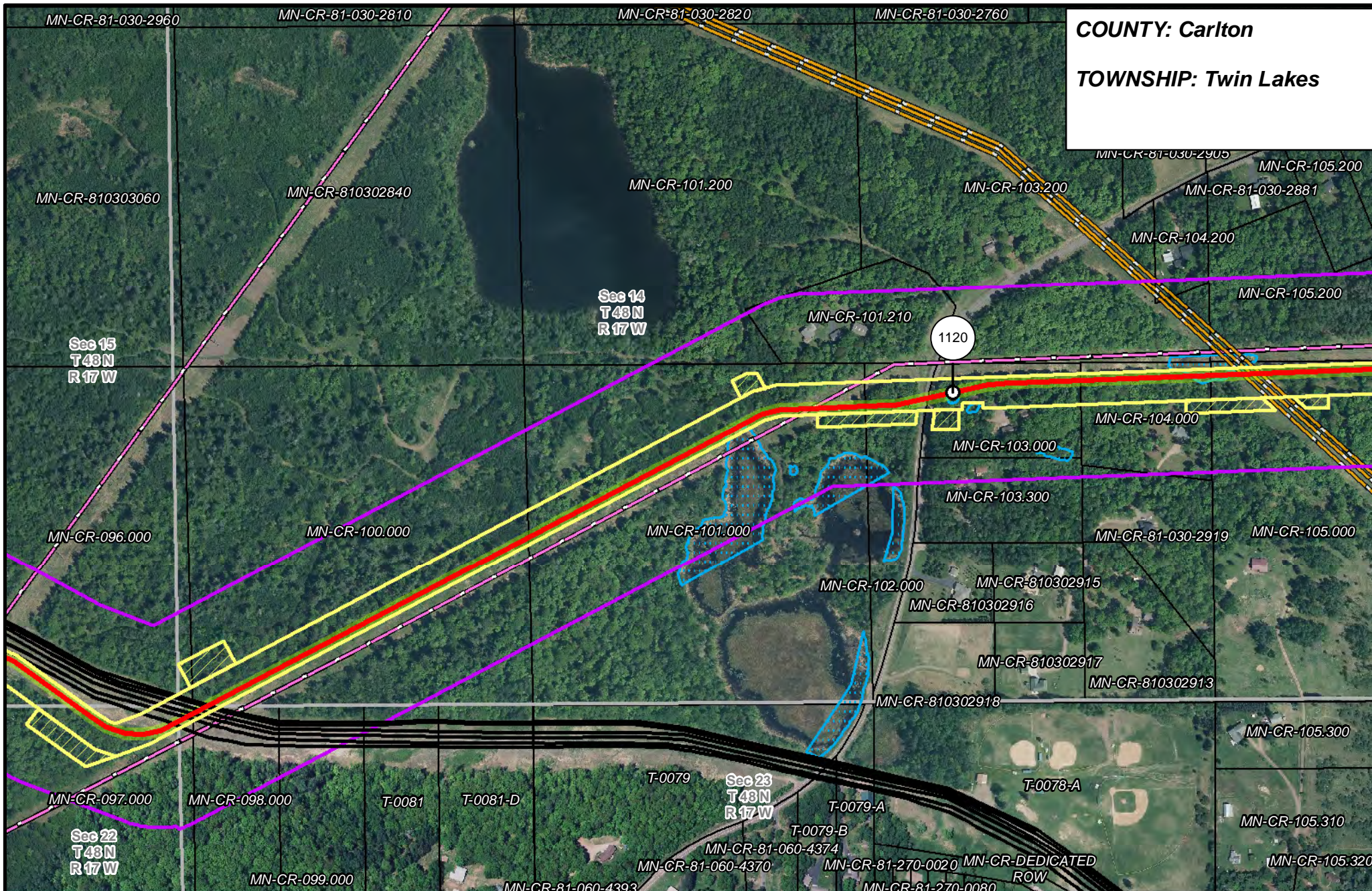
- | | | | |
|-----------------------|--------------------------------|----------------------|------------------------|
| PUC Designated Route | Mile Post | Surveyed Waterbodies | Tract Boundary |
| ROW | Temporary Workspace | ESA | MN Section Boundary |
| Line 3R Pipeline | Additional Temporary Workspace | Surveyed Wetlands | Township/City Boundary |
| Valve Location | Existing Enbridge Pipelines | NWI Wetlands | County Boundary |
| Enbridge Pump Station | Existing Electric Transmission | | |
| | Existing Third Party Pipelines | | |



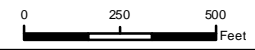
LINE 3 REPLACEMENT PIPELINE ROUTE

DRAWN: MLB CHECKED: ...
 DATE: August 31, 2018 SCALE: 1:6,000
 Map 368 of 378

COUNTY: Carlton
TOWNSHIP: Twin Lakes



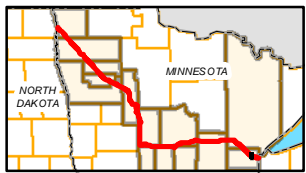
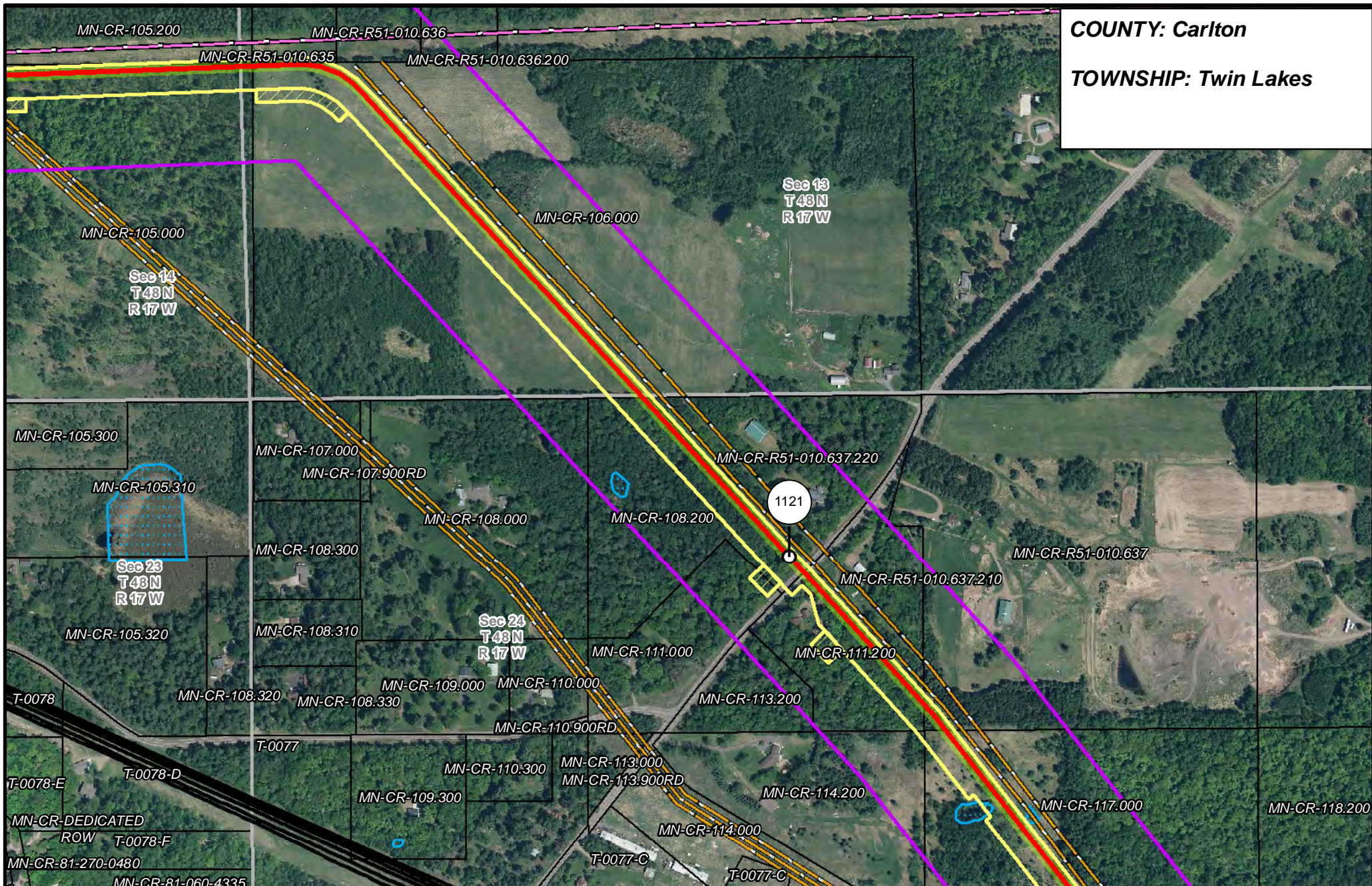
- PUC Designated Route
- ROW
- Line 3R Pipeline
- Valve Location
- Enbridge Pump Station
- Mile Post
- Temporary Workspace
- Additional Temporary Workspace
- Existing Enbridge Pipelines
- Existing Electric Transmission
- Existing Third Party Pipelines
- Surveyed Waterbodies
- ESA
- Surveyed Wetlands
- NWI Wetlands
- Tract Boundary
- MN Section Boundary
- Township/City Boundary
- County Boundary



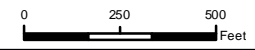
LINE 3 REPLACEMENT PIPELINE ROUTE

DRAWN: MLB CHECKED: ...
 DATE: August 31, 2018 SCALE: 1:5,000
 Map 369 of 378

COUNTY: Carlton
TOWNSHIP: Twin Lakes



- | | | | |
|-----------------------|--------------------------------|--------------------------------|------------------------|
| PUC Designated Route | Mile Post | Surveyed Waterbodies | Tract Boundary |
| ROW | Temporary Workspace | ESA | MN Section Boundary |
| Line 3R Pipeline | Additional Temporary Workspace | Surveyed Wetlands | Township/City Boundary |
| Valve Location | Existing Enbridge Pipelines | NWI Wetlands | County Boundary |
| Enbridge Pump Station | Existing Electric Transmission | Existing Third Party Pipelines | |

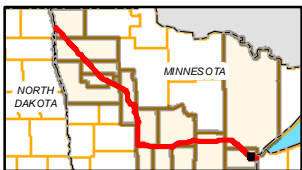
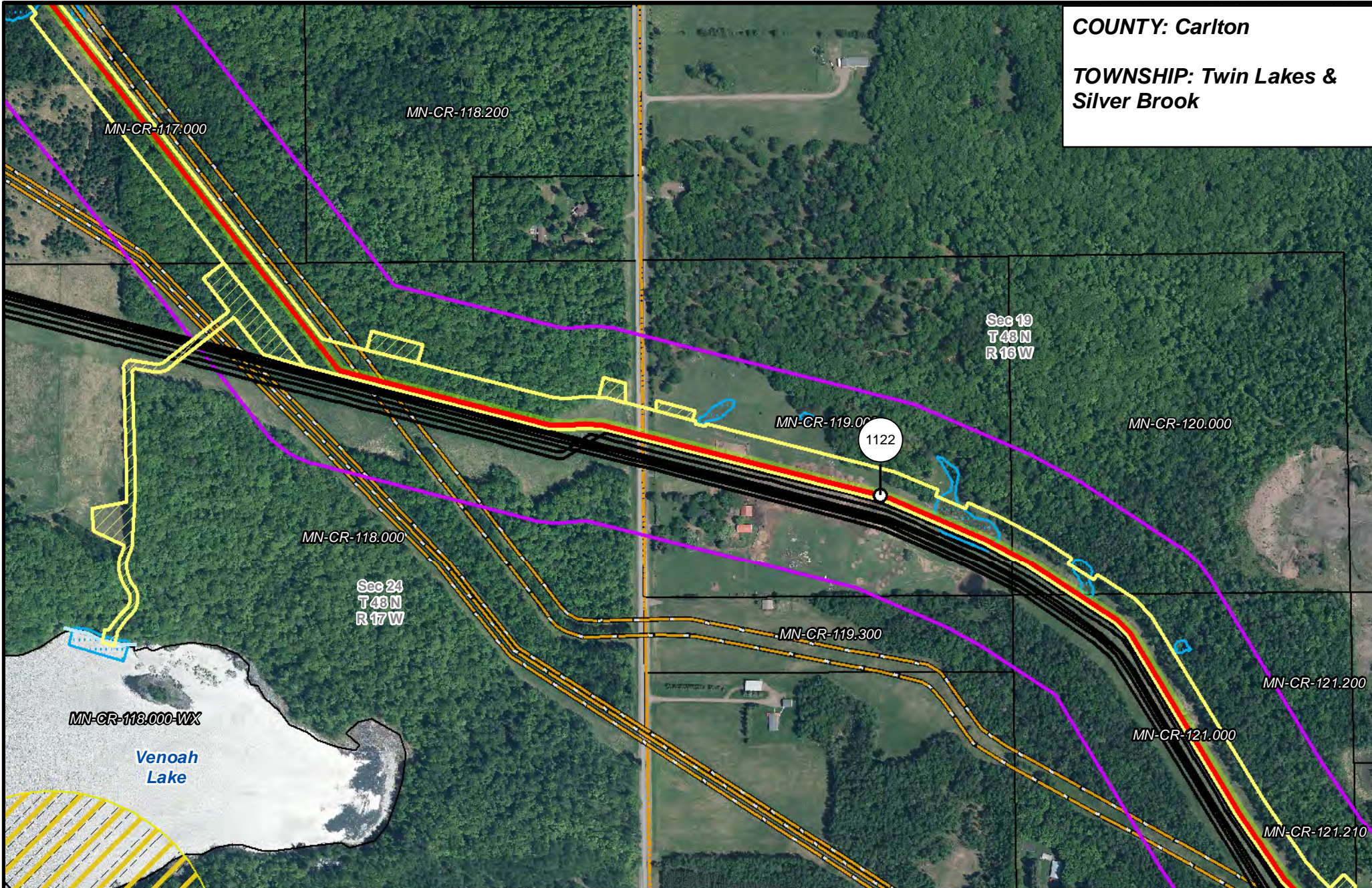


LINE 3 REPLACEMENT PIPELINE ROUTE

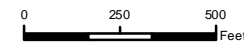
DRAWN: MLB CHECKED: ...
 DATE: August 31, 2018 SCALE: 1:6,000
 Map 370 of 378

COUNTY: Carlton

TOWNSHIP: Twin Lakes & Silver Brook



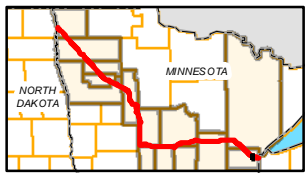
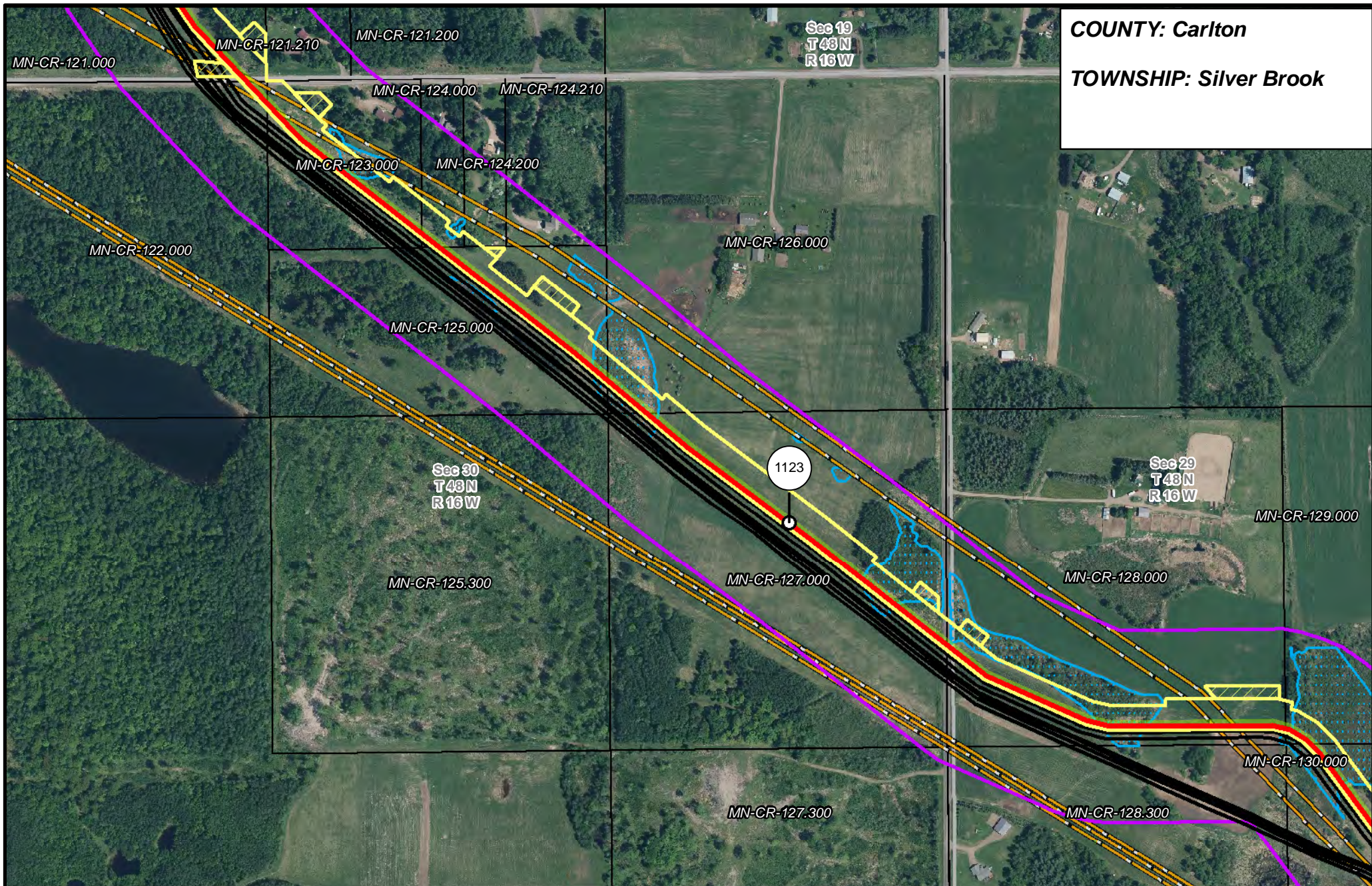
- | | | | |
|-----------------------|--------------------------------|----------------------|------------------------|
| PUC Designated Route | Mile Post | Surveyed Waterbodies | Tract Boundary |
| ROW | Temporary Workspace | ESA | MN Section Boundary |
| Line 3R Pipeline | Additional Temporary Workspace | Surveyed Wetlands | Township/City Boundary |
| Valve Location | Existing Enbridge Pipelines | NWI Wetlands | County Boundary |
| Enbridge Pump Station | Existing Electric Transmission | | |
| | Existing Third Party Pipelines | | |



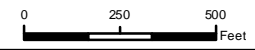
LINE 3 REPLACEMENT PIPELINE ROUTE

DRAWN: MLB CHECKED: ...
DATE: August 31, 2018 SCALE: 1:6,000
Map 371 of 378

COUNTY: Carlton
TOWNSHIP: Silver Brook



- | | | | |
|-----------------------|--------------------------------|----------------------|------------------------|
| PUC Designated Route | Mile Post | Surveyed Waterbodies | Tract Boundary |
| Line 3R Pipeline | Temporary Workspace | ESA | MN Section Boundary |
| Valve Location | Additional Temporary Workspace | Surveyed Wetlands | Township/City Boundary |
| Enbridge Pump Station | Existing Enbridge Pipelines | NWI Wetlands | County Boundary |
| | Existing Electric Transmission | | |
| | Existing Third Party Pipelines | | |

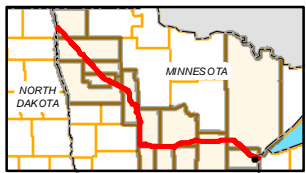
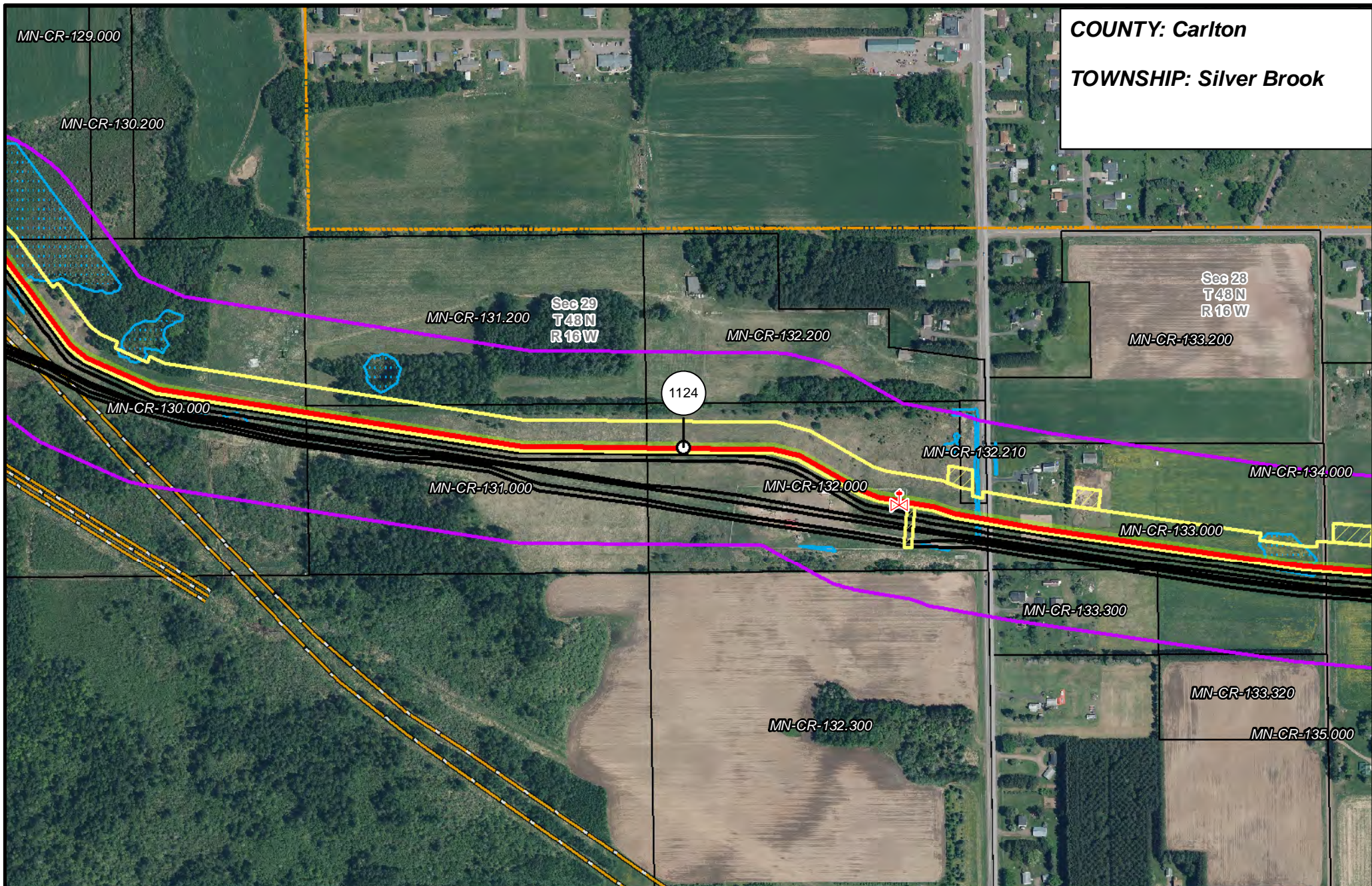


LINE 3 REPLACEMENT PIPELINE ROUTE

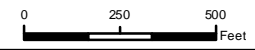
DRAWN: MLB CHECKED: ...
 DATE: August 31, 2018 SCALE: 1:5,000

Map 372 of 378

COUNTY: Carlton
TOWNSHIP: Silver Brook



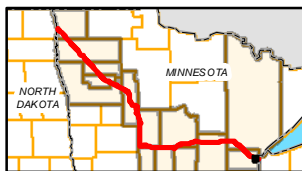
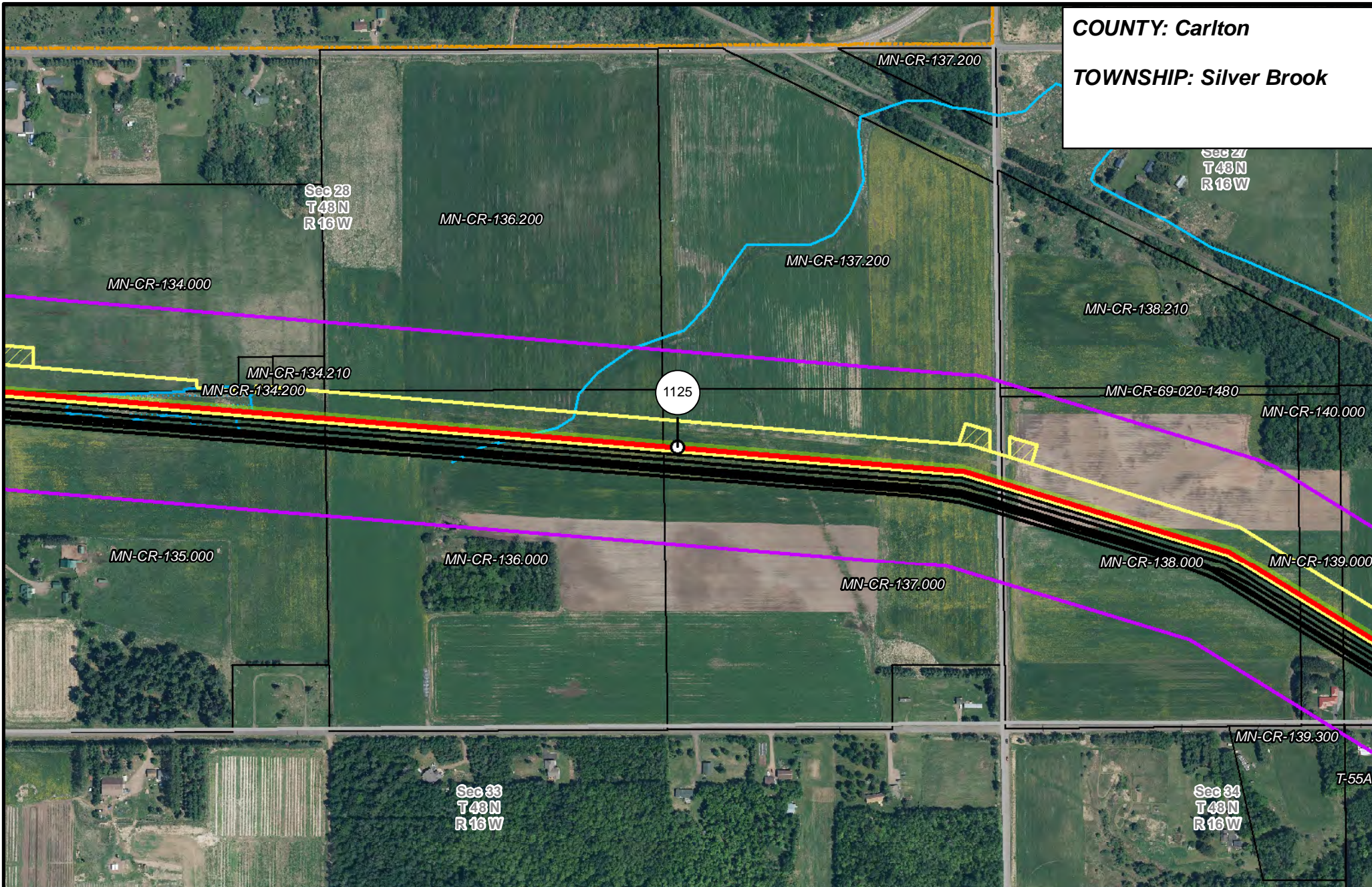
- | | | | |
|-----------------------|--------------------------------|----------------------|------------------------|
| PUC Designated Route | Mile Post | Surveyed Waterbodies | Tract Boundary |
| ROW | Temporary Workspace | ESA | MN Section Boundary |
| Line 3R Pipeline | Additional Temporary Workspace | Surveyed Wetlands | Township/City Boundary |
| Valve Location | Existing Enbridge Pipelines | NWI Wetlands | County Boundary |
| Enbridge Pump Station | Existing Electric Transmission | | |
| | Existing Third Party Pipelines | | |



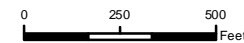
LINE 3 REPLACEMENT PIPELINE ROUTE

DRAWN: MLB CHECKED: ...
 DATE: August 31, 2018 SCALE: 1:5,000
 Map 373 of 378

COUNTY: Carlton
TOWNSHIP: Silver Brook



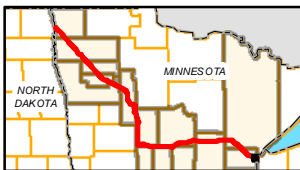
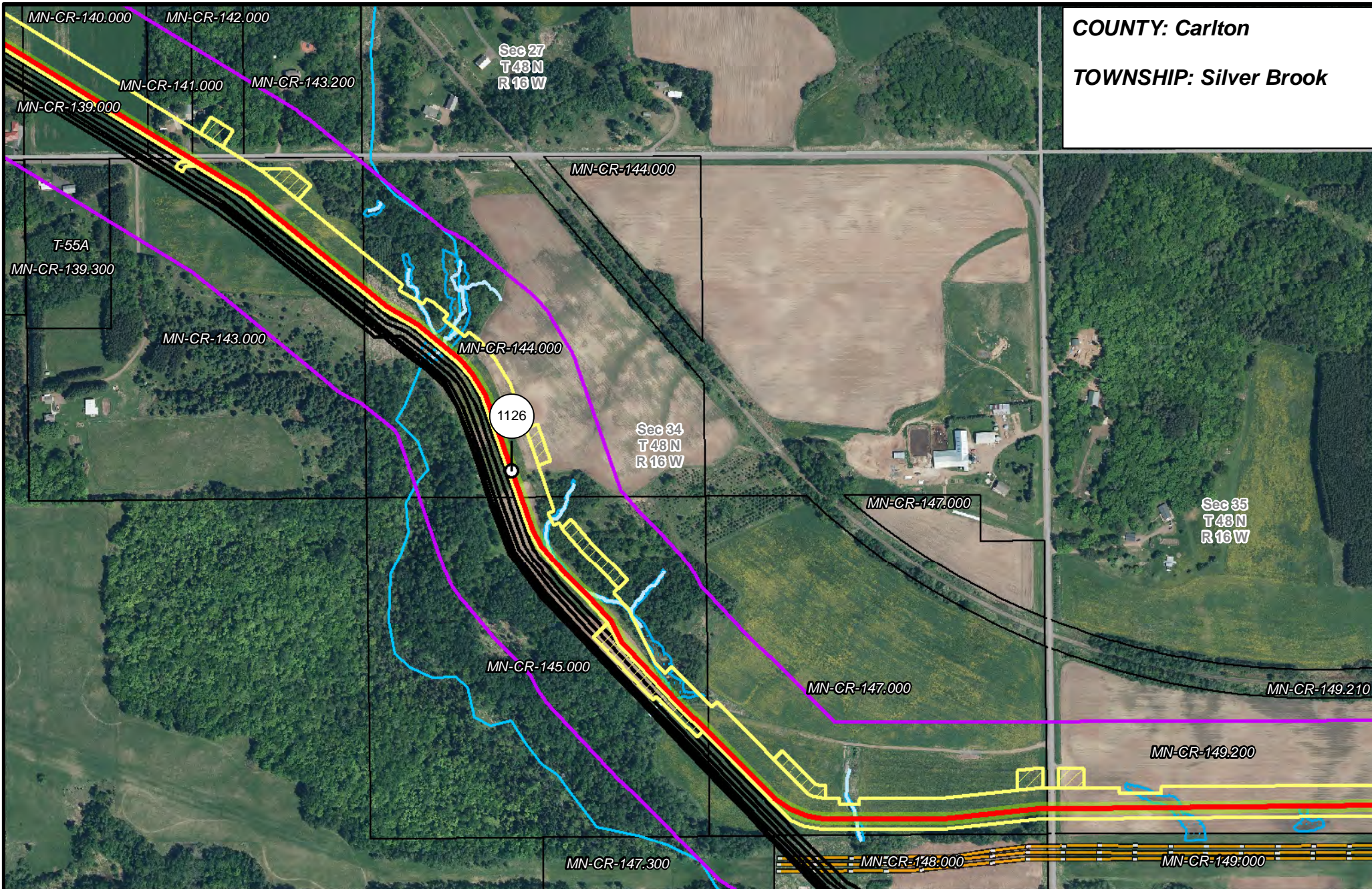
- | | | | |
|-----------------------|--------------------------------|----------------------|------------------------|
| PUC Designated Route | Mile Post | Surveyed Waterbodies | Tract Boundary |
| ROW | Temporary Workspace | ESA | MN Section Boundary |
| Line 3R Pipeline | Additional Temporary Workspace | Surveyed Wetlands | Township/City Boundary |
| Valve Location | Existing Enbridge Pipelines | NWI Wetlands | County Boundary |
| Enbridge Pump Station | Existing Electric Transmission | | |
| | Existing Third Party Pipelines | | |



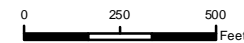
**LINE 3 REPLACEMENT
PIPELINE ROUTE**

DRAWN: MLB CHECKED: ...
DATE: August 31, 2018 SCALE: 1"=5,000'
Map 374 of 378

COUNTY: Carlton
TOWNSHIP: Silver Brook



- | | | | |
|-----------------------|--------------------------------|----------------------|------------------------|
| PUC Designated Route | Mile Post | Surveyed Waterbodies | Tract Boundary |
| ROW | Temporary Workspace | ESA | MN Section Boundary |
| Line 3R Pipeline | Additional Temporary Workspace | Surveyed Wetlands | Township/City Boundary |
| Valve Location | Existing Enbridge Pipelines | NWI Wetlands | County Boundary |
| Enbridge Pump Station | Existing Electric Transmission | | |
| | Existing Third Party Pipelines | | |

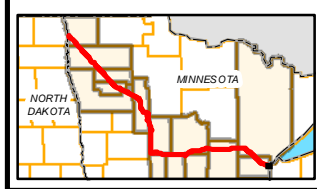
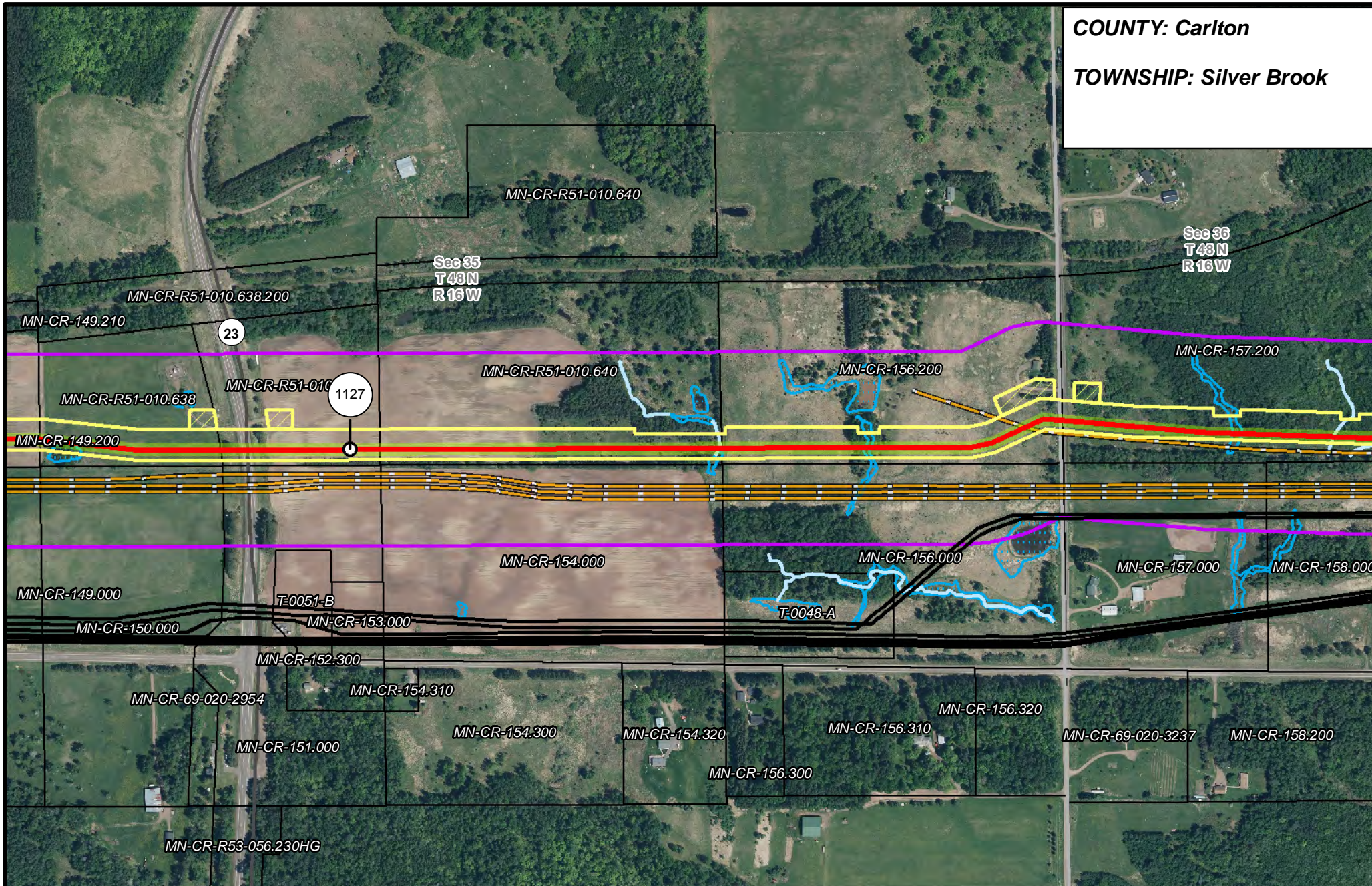


LINE 3 REPLACEMENT PIPELINE ROUTE

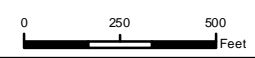
DRAWN: MLB CHECKED: ...
 DATE: August 31, 2018 SCALE: 1:6,000

Map 375 of 378

COUNTY: Carlton
TOWNSHIP: Silver Brook



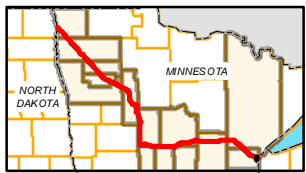
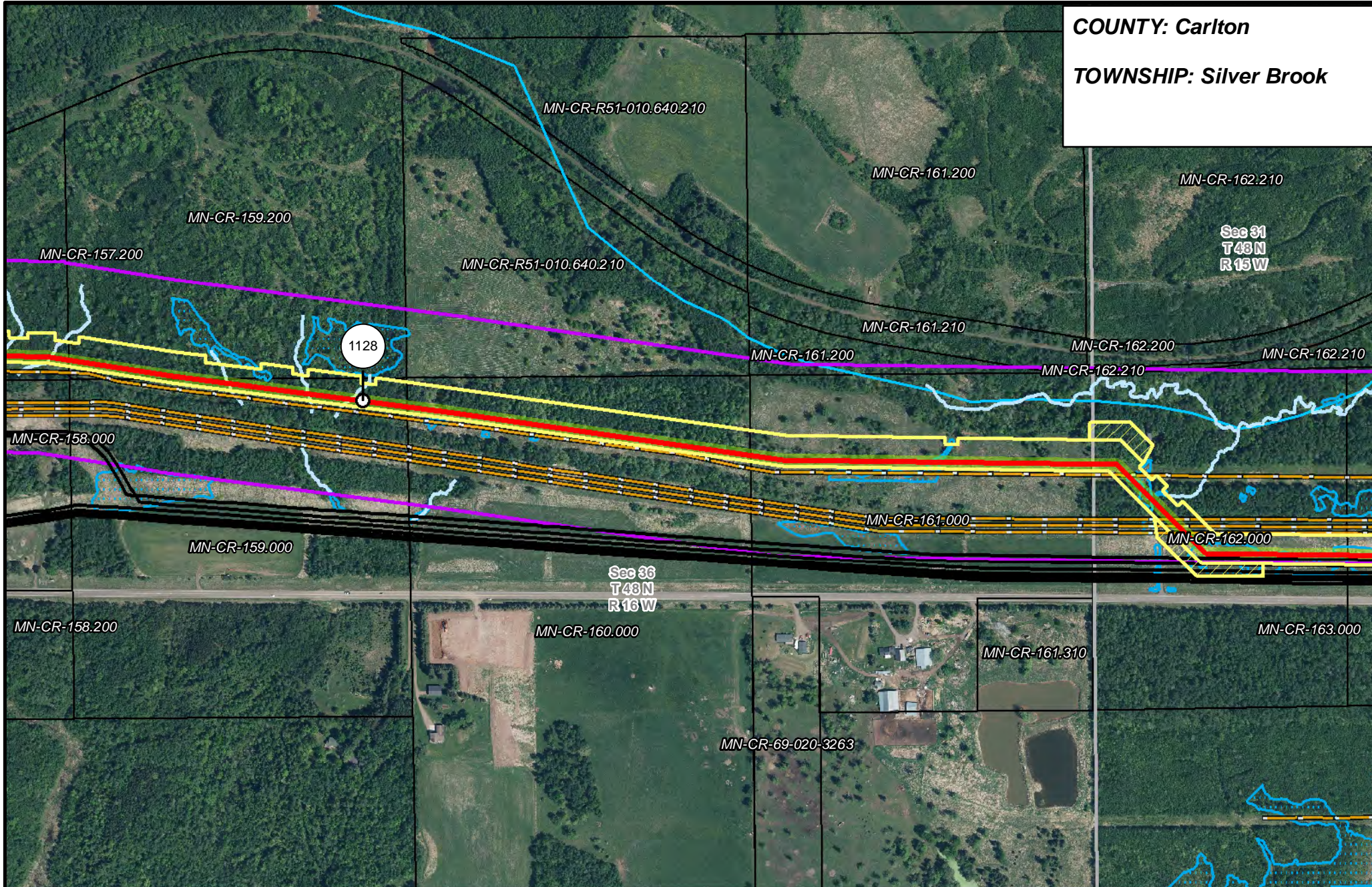
- | | | | |
|-----------------------|--------------------------------|----------------------|------------------------|
| PUC Designated Route | Mile Post | Surveyed Waterbodies | Tract Boundary |
| ROW | Temporary Workspace | ESA | MN Section Boundary |
| Line 3R Pipeline | Additional Temporary Workspace | Surveyed Wetlands | Township/City Boundary |
| Valve Location | Existing Enbridge Pipelines | NWI Wetlands | County Boundary |
| Enbridge Pump Station | Existing Electric Transmission | | |
| | Existing Third Party Pipelines | | |



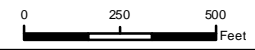
LINE 3 REPLACEMENT PIPELINE ROUTE

DRAWN: MLB CHECKED: ...
 DATE: August 31, 2018 SCALE: 1"=5,000'
 Map 376 of 378

COUNTY: Carlton
TOWNSHIP: Silver Brook



- | | | | |
|-----------------------|--------------------------------|----------------------|------------------------|
| PUC Designated Route | Mile Post | Surveyed Waterbodies | Tract Boundary |
| ROW | Temporary Workspace | ESA | MN Section Boundary |
| Line 3R Pipeline | Additional Temporary Workspace | Surveyed Wetlands | Township/City Boundary |
| Valve Location | Existing Enbridge Pipelines | NWI Wetlands | County Boundary |
| Enbridge Pump Station | Existing Electric Transmission | | |
| | Existing Third Party Pipelines | | |

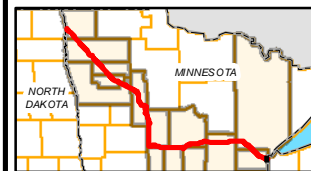
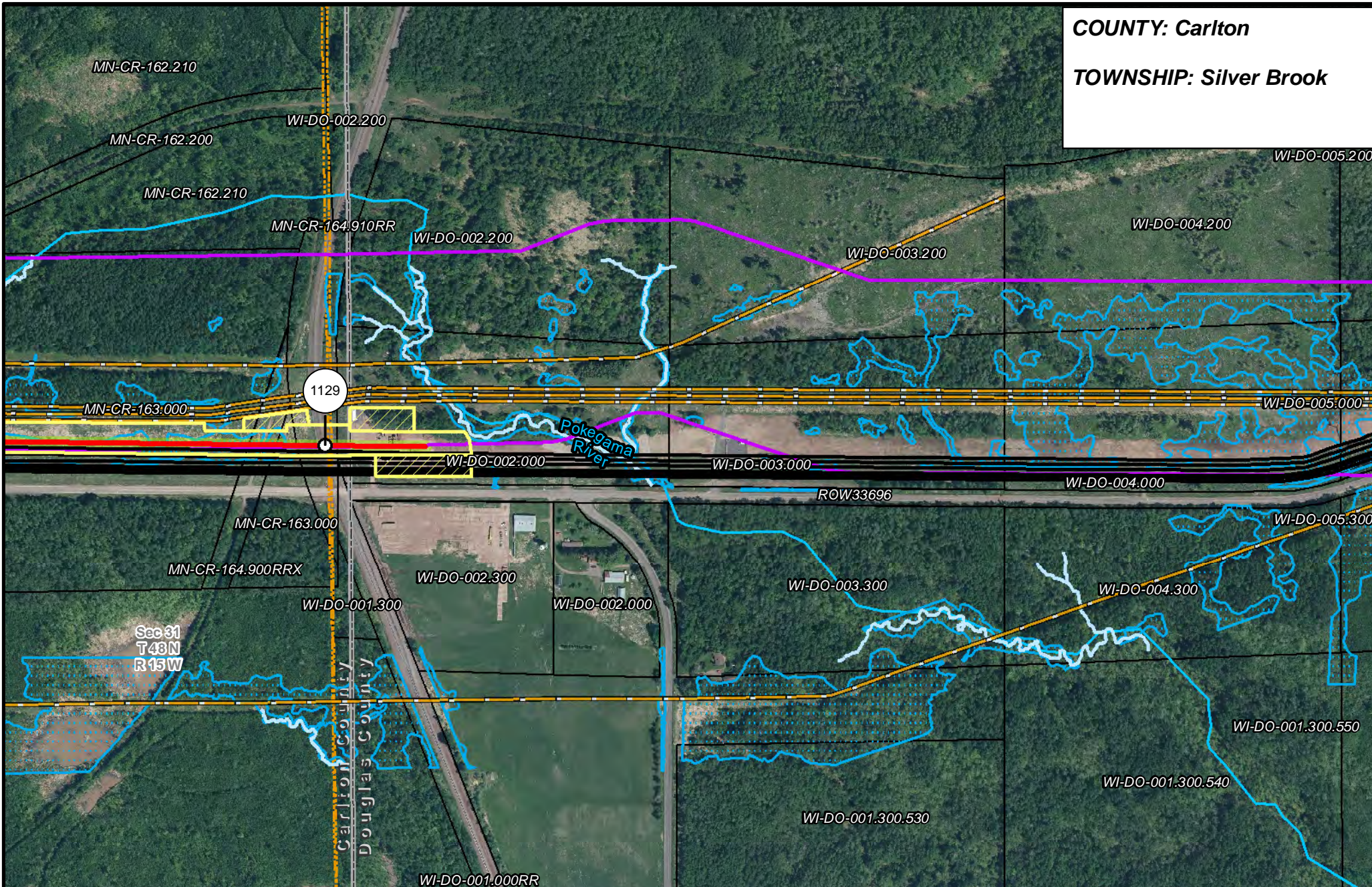


LINE 3 REPLACEMENT PIPELINE ROUTE

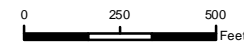
DRAWN: MLB CHECKED: ...
 DATE: August 31, 2018 SCALE: 1:5,000

Map 377 of 378

COUNTY: Carlton
TOWNSHIP: Silver Brook



- | | | | |
|-----------------------|--------------------------------|----------------------|------------------------|
| PUC Designated Route | Mile Post | Surveyed Waterbodies | Tract Boundary |
| ROW | Temporary Workspace | ESA | MN Section Boundary |
| Line 3R Pipeline | Additional Temporary Workspace | Surveyed Wetlands | Township/City Boundary |
| Valve Location | Existing Enbridge Pipelines | NWI Wetlands | County Boundary |
| Enbridge Pump Station | Existing Electric Transmission | | |
| | Existing Third Party Pipelines | | |



**LINE 3 REPLACEMENT
PIPELINE ROUTE**

DRAWN: MLB CHECKED: ---
DATE: August 31, 2018 SCALE: 1"=5,000'
Map 378 of 378