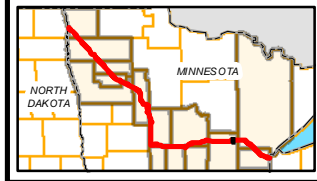
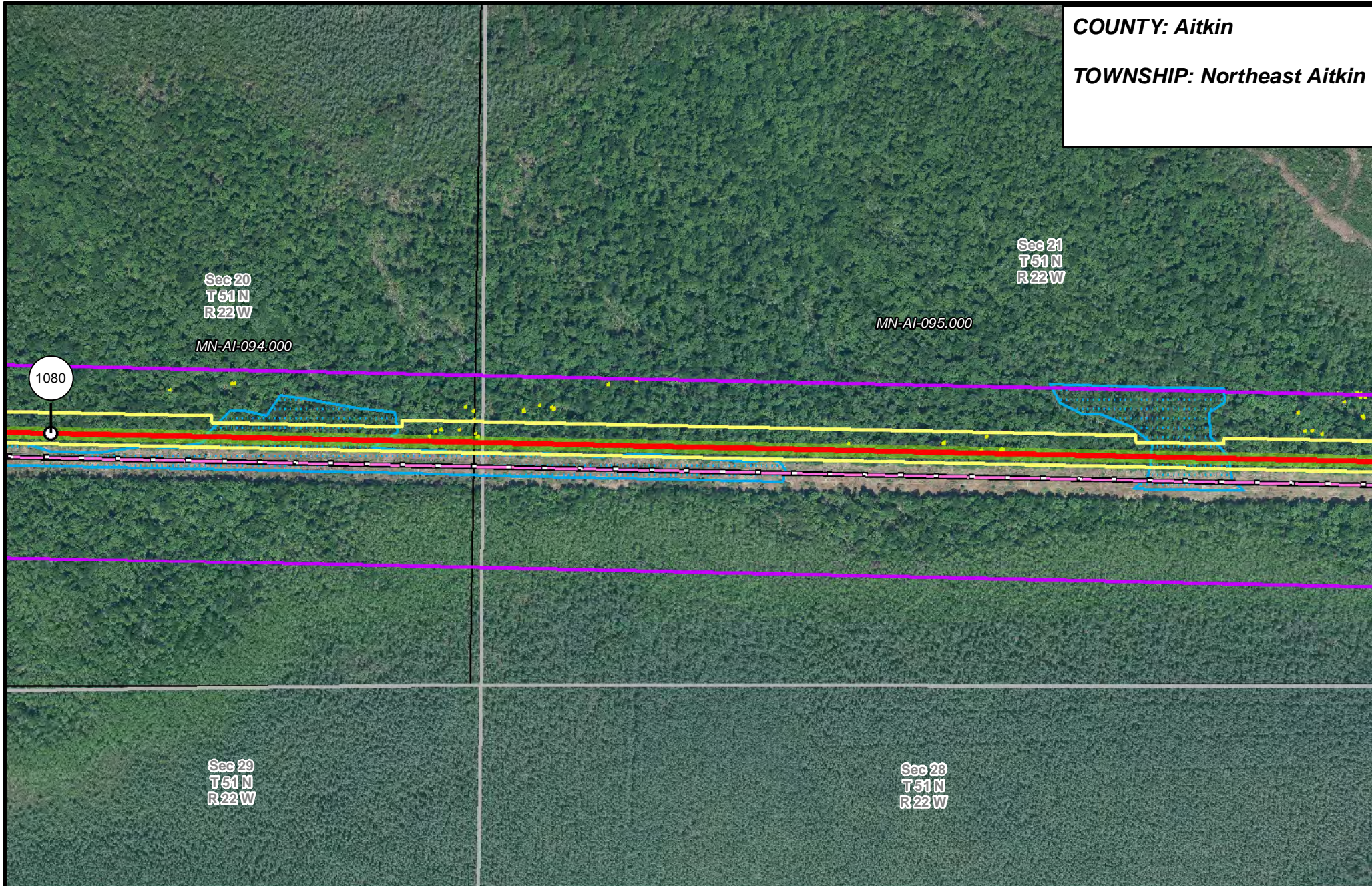
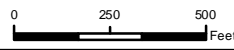


**COUNTY: Aitkin**  
**TOWNSHIP: Northeast Aitkin**



- PUC Designated Route
- ROW
- Line 3R Pipeline
- Valve Location
- Enbridge Pump Station
- Mile Post
- Temporary Workspace
- Additional Temporary Workspace
- Existing Enbridge Pipelines
- Existing Electric Transmission
- Existing Third Party Pipelines
- Surveyed Waterbodies
- ESA
- Surveyed Wetlands
- NWI Wetlands
- Tract Boundary
- MN Section Boundary
- Township/City Boundary
- County Boundary

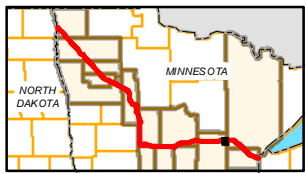
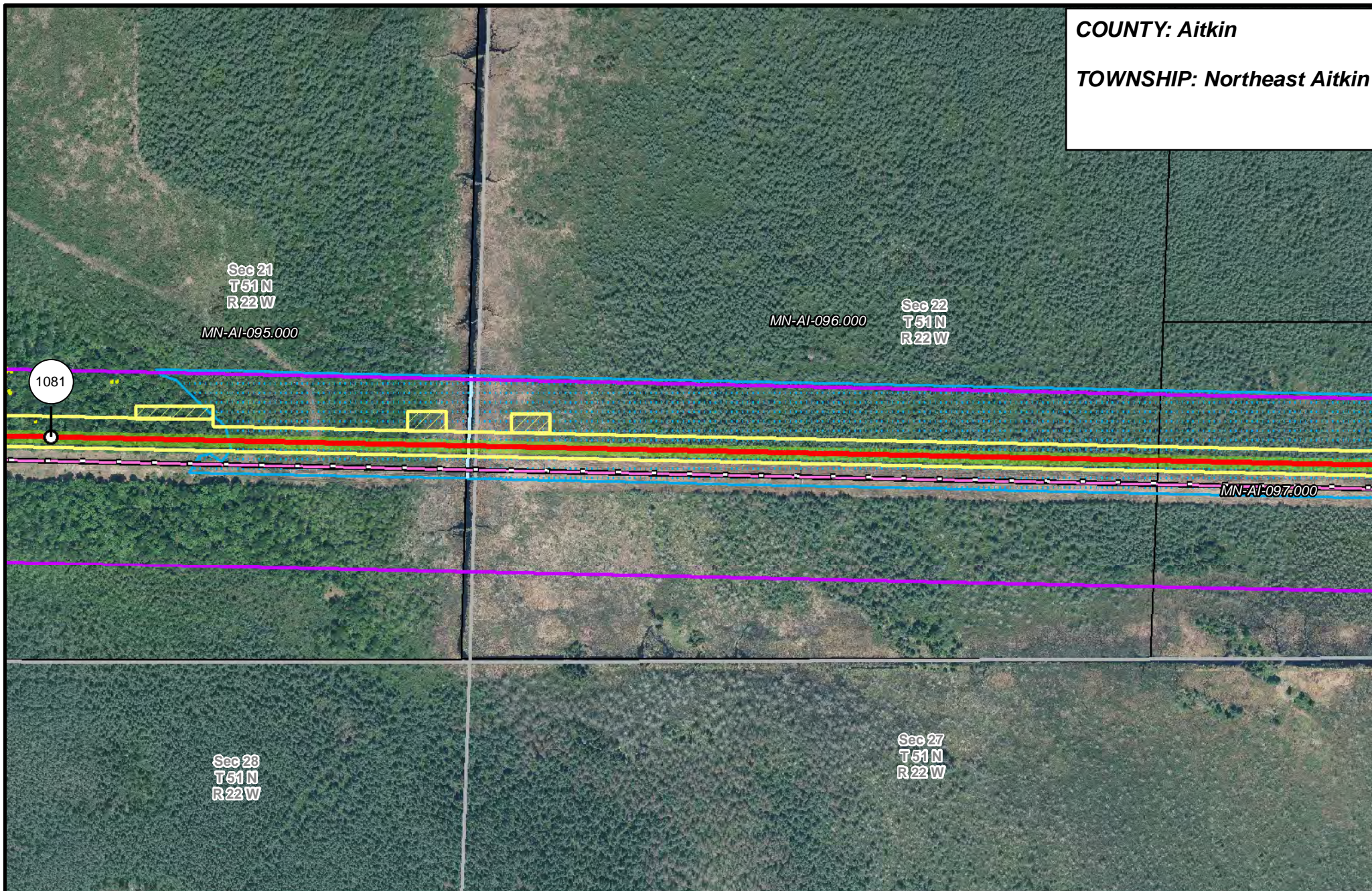


**LINE 3 REPLACEMENT PIPELINE ROUTE**

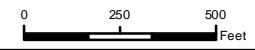
DRAWN: MLB      CHECKED: ...  
 DATE: August 31, 2018      SCALE: 1:5,000  
 Map 328 of 378



**COUNTY: Aitkin**  
**TOWNSHIP: Northeast Aitkin**



- |                       |                                |                      |                        |
|-----------------------|--------------------------------|----------------------|------------------------|
| PUC Designated Route  | Mile Post                      | Surveyed Waterbodies | Tract Boundary         |
| ROW                   | Temporary Workspace            | ESA                  | MN Section Boundary    |
| Line 3R Pipeline      | Additional Temporary Workspace | Surveyed Wetlands    | Township/City Boundary |
| Valve Location        | Existing Enbridge Pipelines    | NWI Wetlands         | County Boundary        |
| Enbridge Pump Station | Existing Electric Transmission |                      |                        |
|                       | Existing Third Party Pipelines |                      |                        |

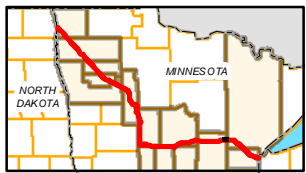
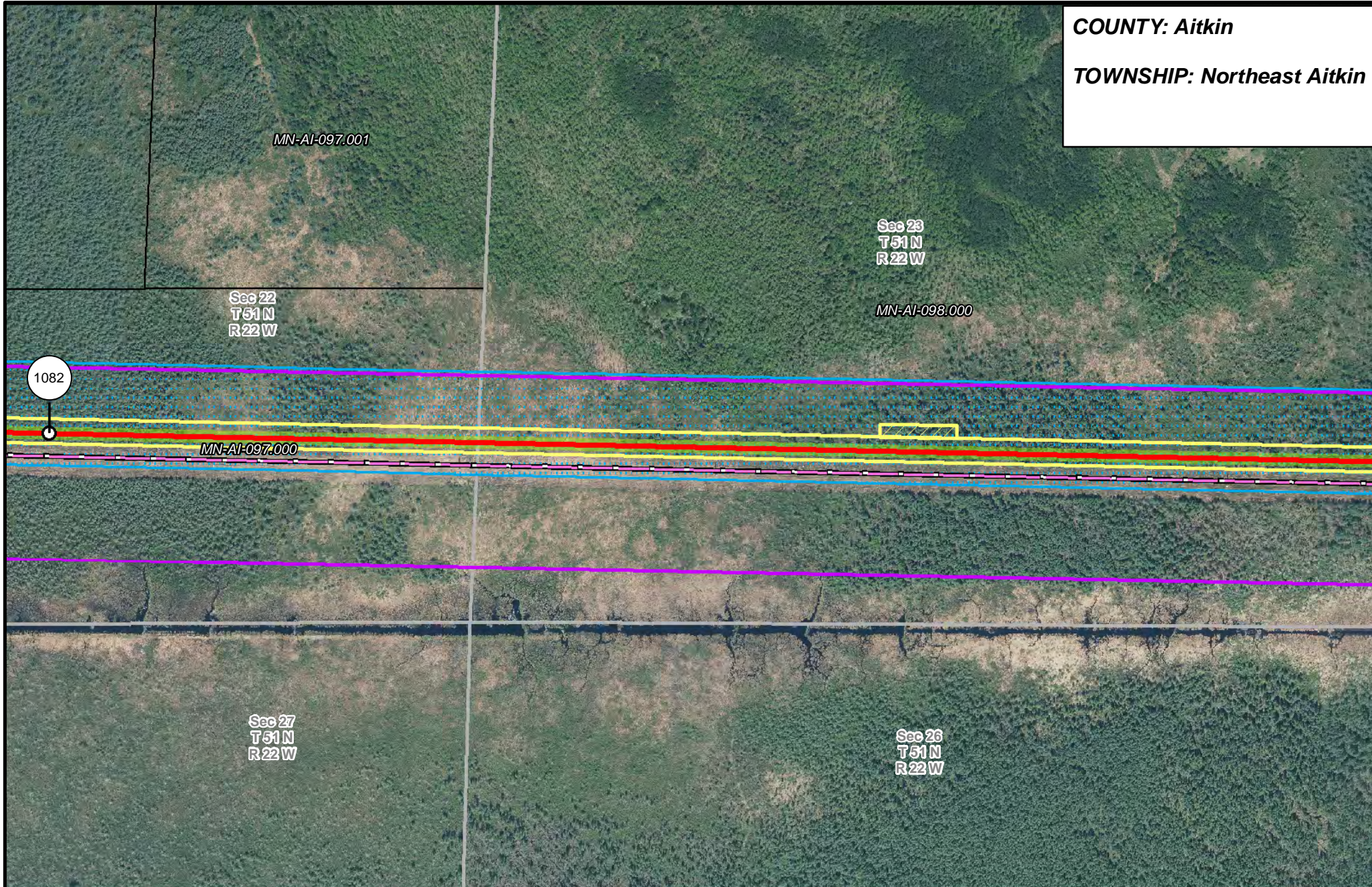


**LINE 3 REPLACEMENT  
PIPELINE ROUTE**

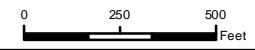
DRAWN: MLB CHECKED: ...  
DATE: August 31, 2018 SCALE: 1:5,000  
Map 329 of 378



**COUNTY: Aitkin**  
**TOWNSHIP: Northeast Aitkin**



- |                       |                                |                      |                        |
|-----------------------|--------------------------------|----------------------|------------------------|
| PUC Designated Route  | Mile Post                      | Surveyed Waterbodies | Tract Boundary         |
| ROW                   | Temporary Workspace            | ESA                  | MN Section Boundary    |
| Line 3R Pipeline      | Additional Temporary Workspace | Surveyed Wetlands    | Township/City Boundary |
| Valve Location        | Existing Enbridge Pipelines    | NWI Wetlands         | County Boundary        |
| Enbridge Pump Station | Existing Electric Transmission |                      |                        |
|                       | Existing Third Party Pipelines |                      |                        |



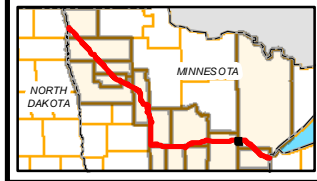
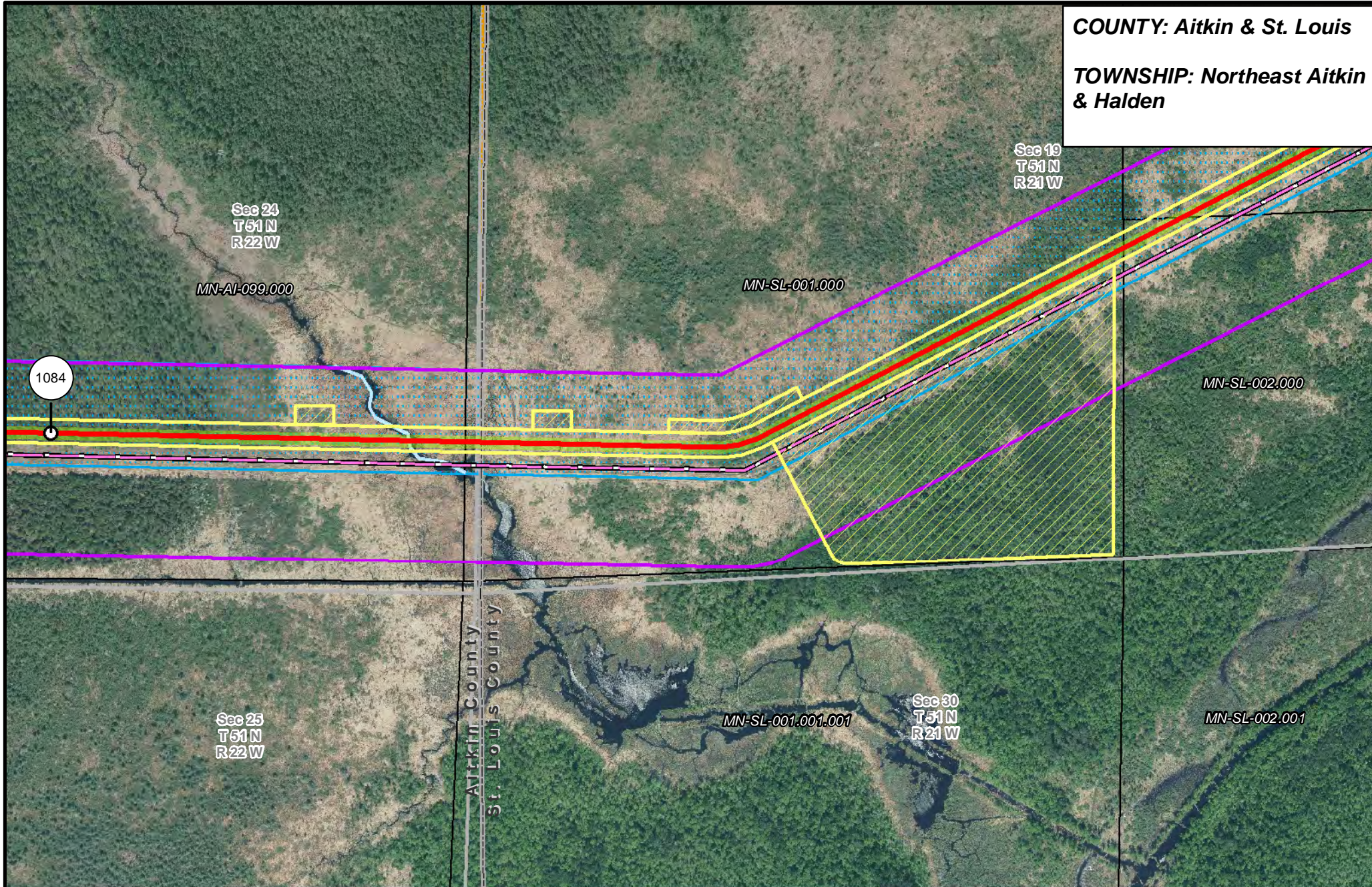
**LINE 3 REPLACEMENT PIPELINE ROUTE**

DRAWN: *MLB* CHECKED: *---*  
 DATE: August 31, 2018 SCALE: 1:5,000  
 Map 330 of 378

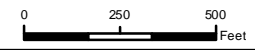


COUNTY: Aitkin & St. Louis

TOWNSHIP: Northeast Aitkin & Halden



- |                       |                                |                                |                        |
|-----------------------|--------------------------------|--------------------------------|------------------------|
| PUC Designated Route  | Mile Post                      | Surveyed Waterbodies           | Tract Boundary         |
| ROW                   | Temporary Workspace            | ESA                            | MN Section Boundary    |
| Line 3R Pipeline      | Additional Temporary Workspace | Surveyed Wetlands              | Township/City Boundary |
| Valve Location        | Existing Enbridge Pipelines    | NWI Wetlands                   | County Boundary        |
| Enbridge Pump Station | Existing Electric Transmission | Existing Third Party Pipelines |                        |



**LINE 3 REPLACEMENT PIPELINE ROUTE**

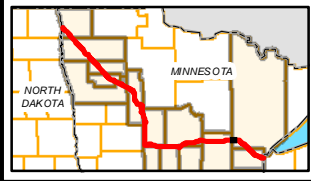
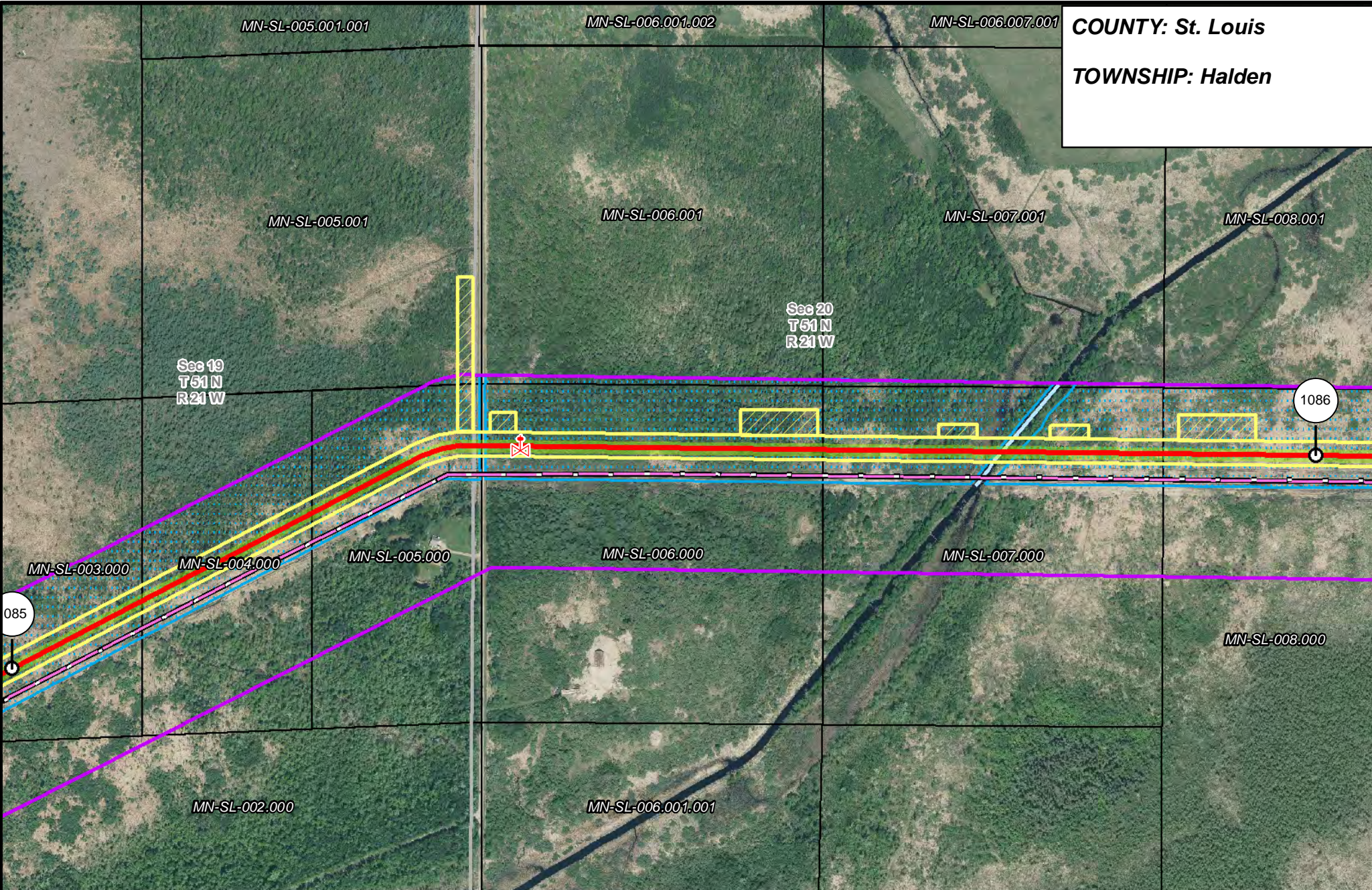
DRAWN: *MLB* CHECKED: *---*  
DATE: August 31, 2018 SCALE: 1:6,000

Map 332 of 378

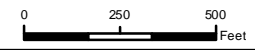


COUNTY: St. Louis

TOWNSHIP: Halden



- PUC Designated Route
- ROW
- Line 3R Pipeline
- Temporary Workspace
- Additional Temporary Workspace
- Valve Location
- Enbridge Pump Station
- Mile Post
- Temporary Workspace
- Additional Temporary Workspace
- Existing Enbridge Pipelines
- Existing Electric Transmission
- Existing Third Party Pipelines
- Surveyed Waterbodies
- ESA
- Surveyed Wetlands
- NWI Wetlands
- Tract Boundary
- MN Section Boundary
- Township/City Boundary
- County Boundary

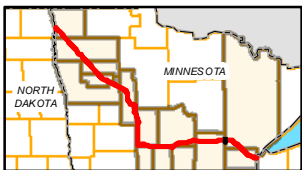
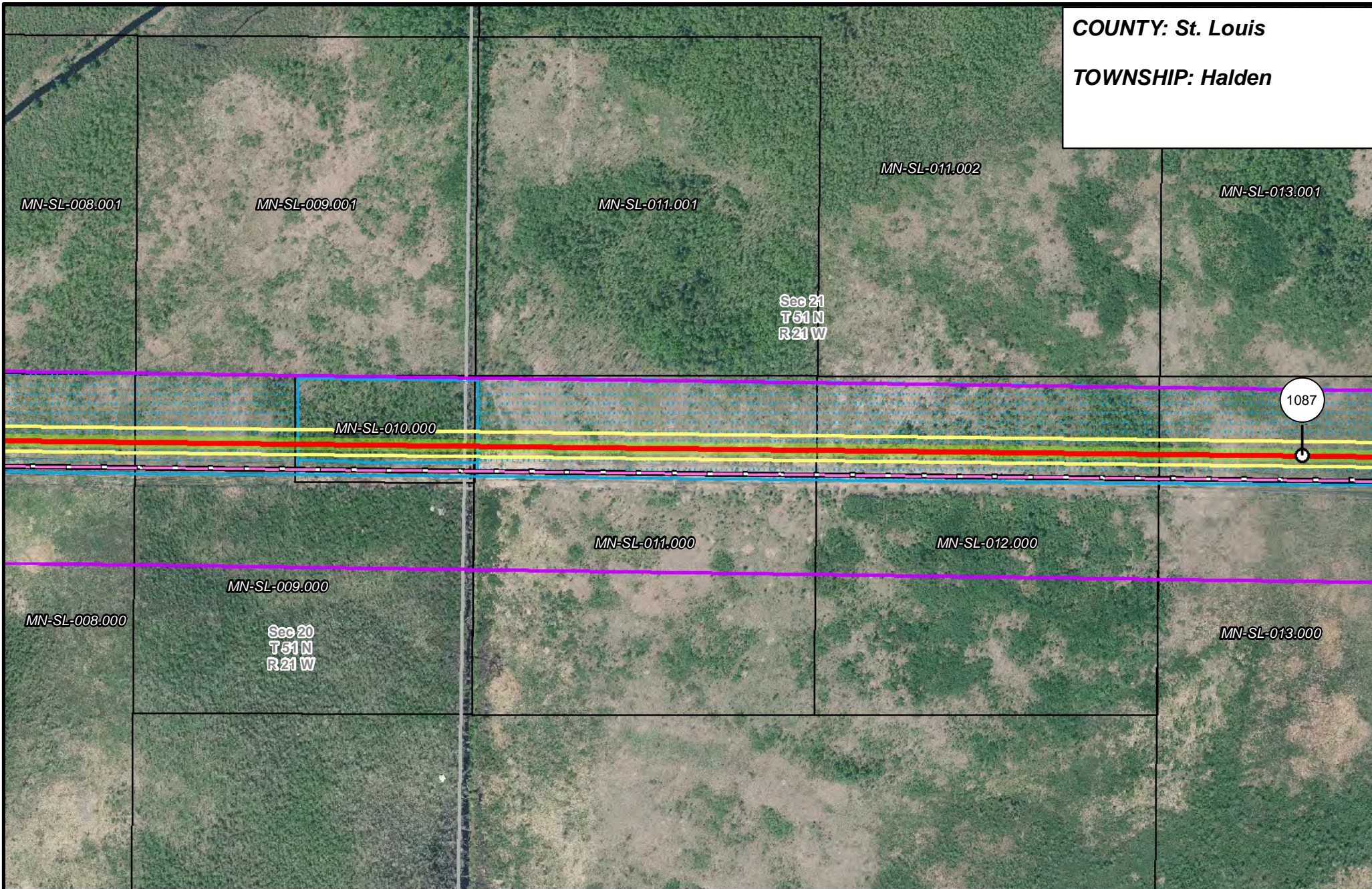


**LINE 3 REPLACEMENT PIPELINE ROUTE**

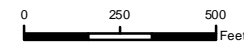
DRAWN: MLB	CHECKED: ...
DATE: August 31, 2018	SCALE: 1:5,000
Map 333 of 378	



**COUNTY: St. Louis**  
**TOWNSHIP: Halden**



- |                       |                                |                      |                        |
|-----------------------|--------------------------------|----------------------|------------------------|
| PUC Designated Route  | Mile Post                      | Surveyed Waterbodies | Tract Boundary         |
| ROW                   | Temporary Workspace            | ESA                  | MN Section Boundary    |
| Line 3R Pipeline      | Additional Temporary Workspace | Surveyed Wetlands    | Township/City Boundary |
| Valve Location        | Existing Enbridge Pipelines    | NWI Wetlands         | County Boundary        |
| Enbridge Pump Station | Existing Electric Transmission |                      |                        |
|                       | Existing Third Party Pipelines |                      |                        |

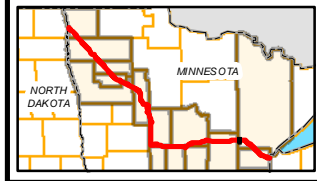
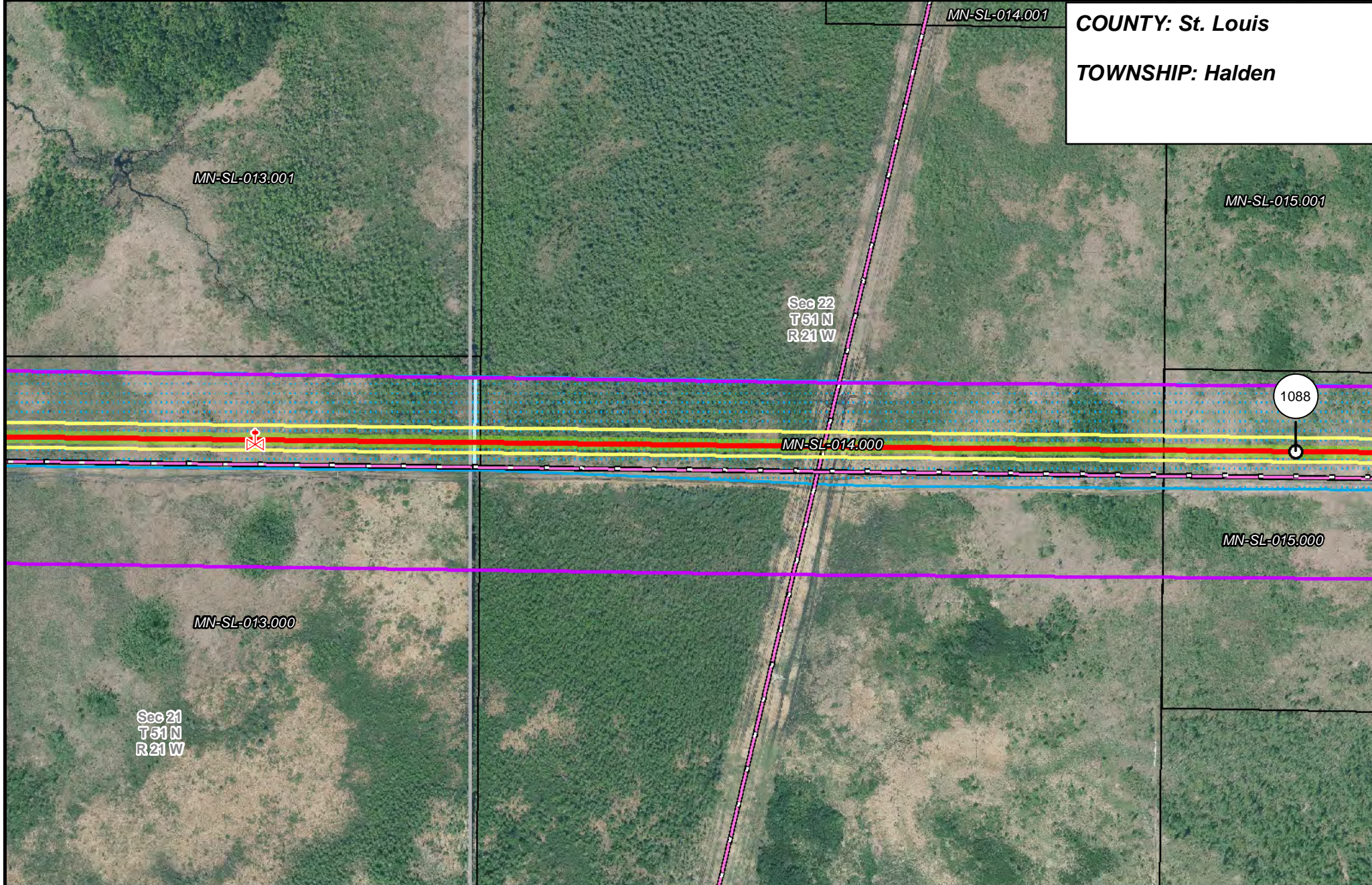


**LINE 3 REPLACEMENT PIPELINE ROUTE**

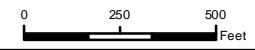
DRAWN: *MLB* CHECKED: *---*  
 DATE: August 31, 2018 SCALE: 1:6,000  
 Map 334 of 378



**COUNTY: St. Louis**  
**TOWNSHIP: Halden**



PUC Designated Route	Mile Post	Surveyed Waterbodies	Tract Boundary
ROW	Temporary Workspace	ESA	MN Section Boundary
Line 3R Pipeline	Additional Temporary Workspace	Surveyed Wetlands	Township/City Boundary
Valve Location	Existing Enbridge Pipelines	NWI Wetlands	County Boundary
Enbridge Pump Station	Existing Electric Transmission	Existing Third Party Pipelines	



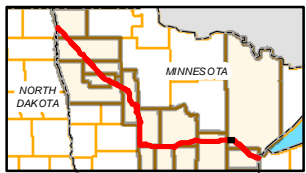
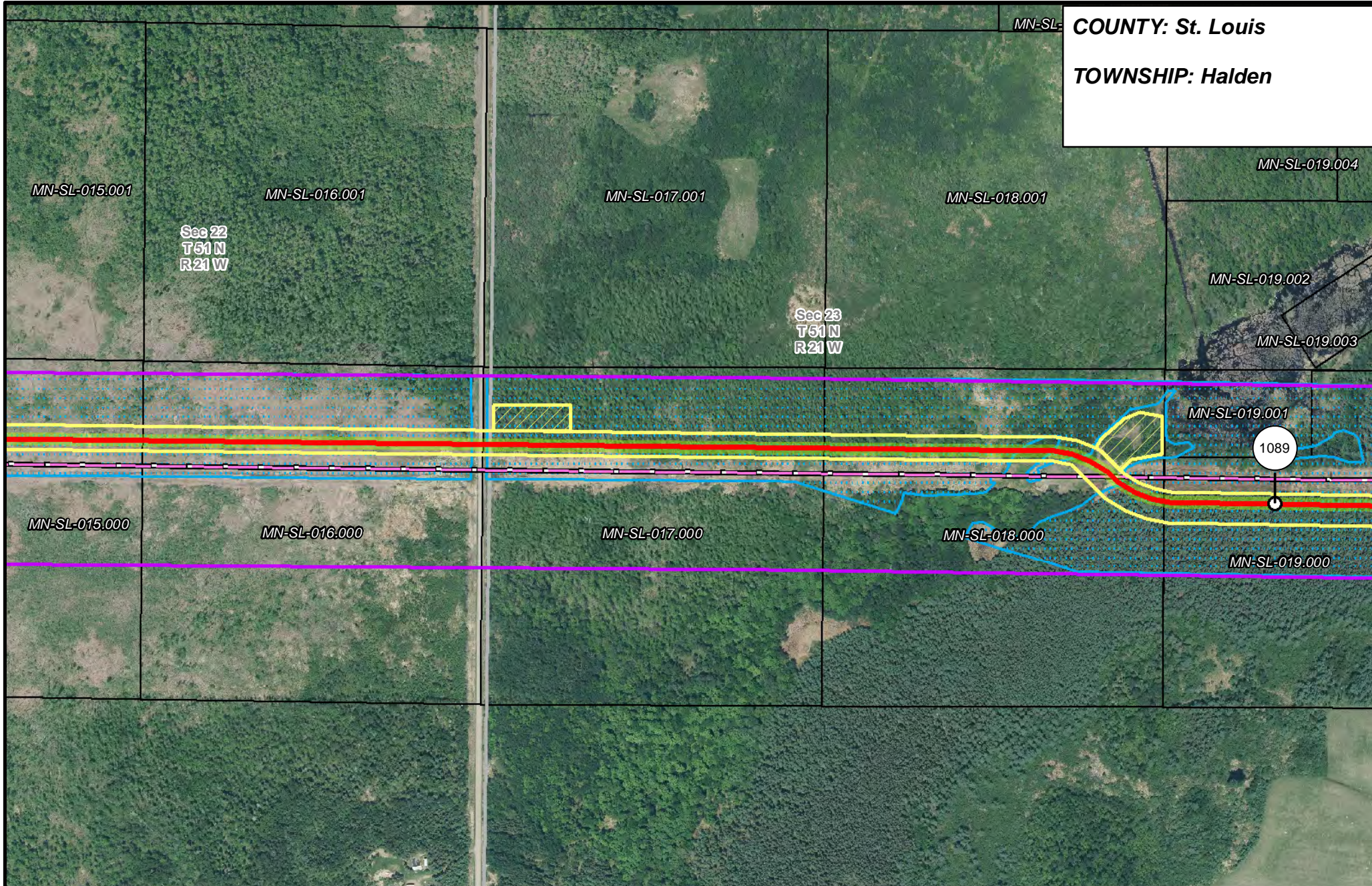
**LINE 3 REPLACEMENT PIPELINE ROUTE**

DRAWN: *MLB* CHECKED: *---*  
 DATE: August 31, 2018 SCALE: 1:6,000

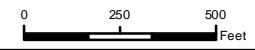
Map 335 of 378



**COUNTY: St. Louis**  
**TOWNSHIP: Halden**



- |                       |                                |                                |                        |
|-----------------------|--------------------------------|--------------------------------|------------------------|
| PUC Designated Route  | Mile Post                      | Surveyed Waterbodies           | Tract Boundary         |
| ROW                   | Temporary Workspace            | ESA                            | MN Section Boundary    |
| Line 3R Pipeline      | Additional Temporary Workspace | Surveyed Wetlands              | Township/City Boundary |
| Valve Location        | Existing Enbridge Pipelines    | NWI Wetlands                   | County Boundary        |
| Enbridge Pump Station | Existing Electric Transmission | Existing Third Party Pipelines |                        |



**LINE 3 REPLACEMENT PIPELINE ROUTE**

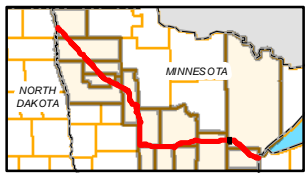
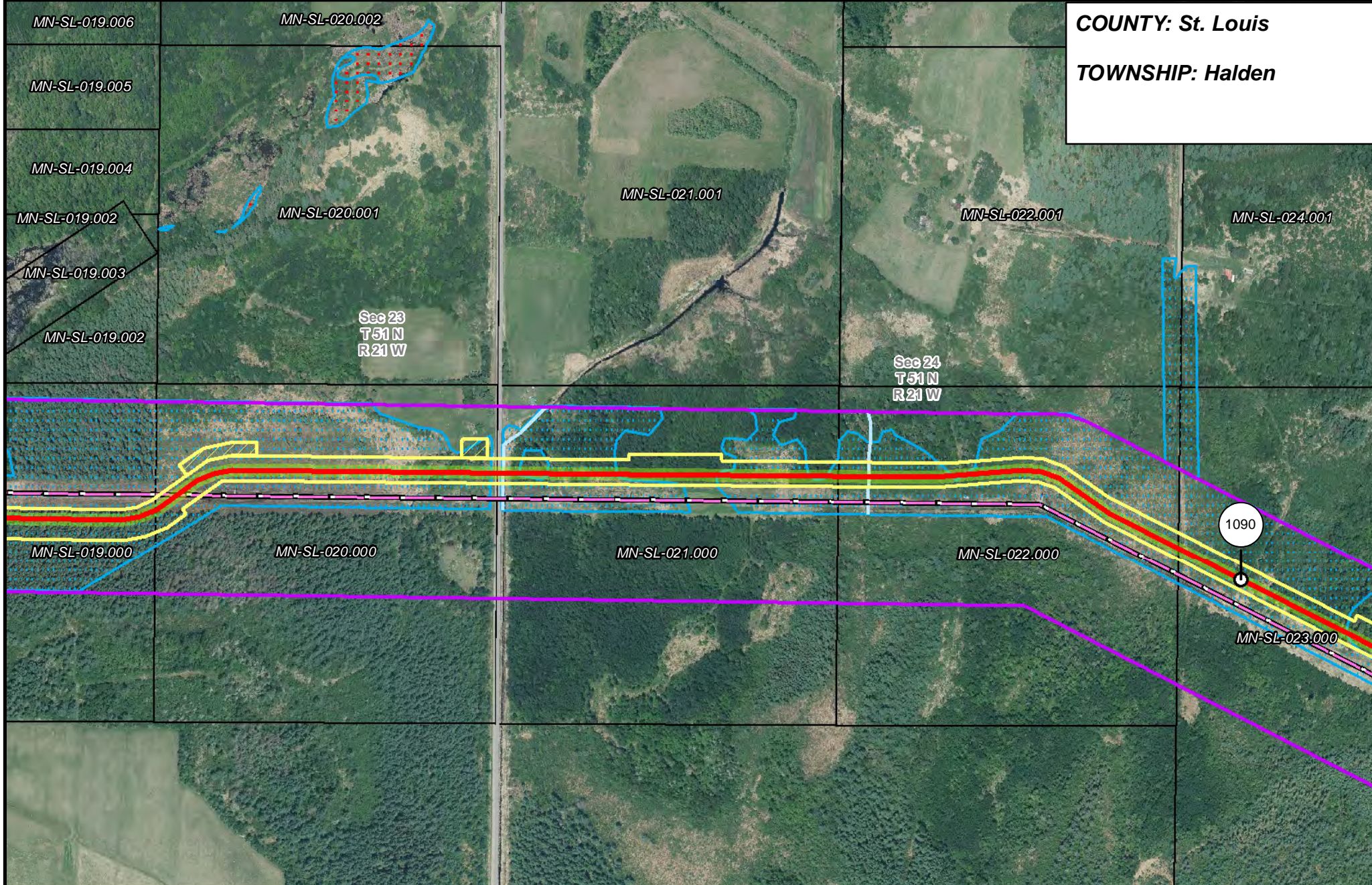
DRAWN: MLB      CHECKED: ...  
 DATE: August 31, 2018      SCALE: 1:5,000

Map 336 of 378

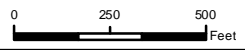


COUNTY: St. Louis

TOWNSHIP: Halden



- PUC Designated Route
- ROW
- Line 3R Pipeline
- Temporary Workspace
- Additional Temporary Workspace
- Valve Location
- Enbridge Pump Station
- Mile Post
- Temporary Workspace
- Additional Temporary Workspace
- Existing Enbridge Pipelines
- Existing Electric Transmission
- Existing Third Party Pipelines
- Surveyed Waterbodies
- ESA
- Surveyed Wetlands
- NWI Wetlands
- Tract Boundary
- MN Section Boundary
- Township/City Boundary
- County Boundary



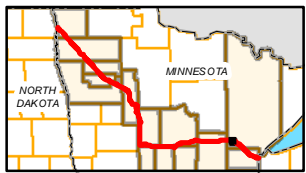
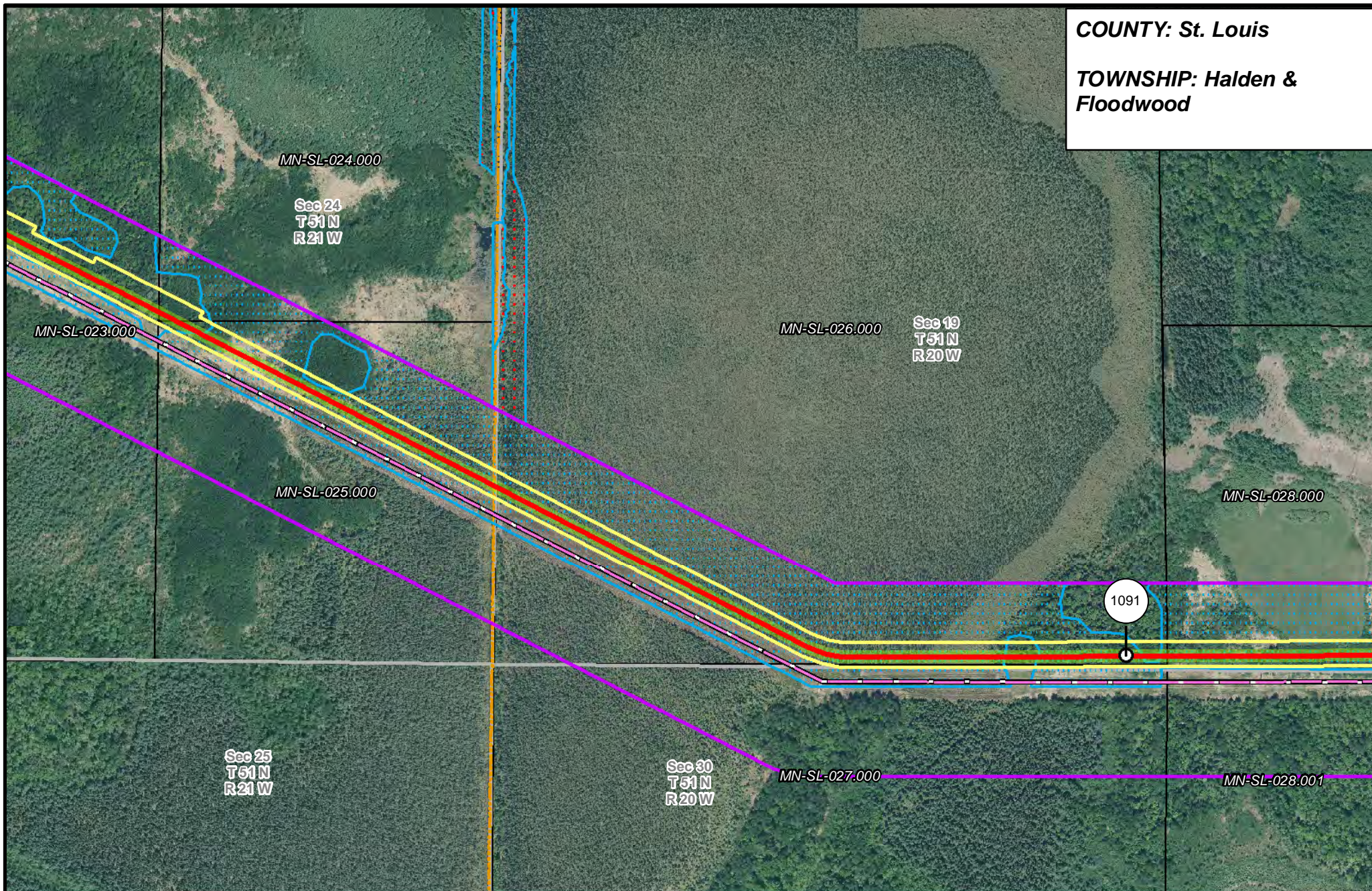
**LINE 3 REPLACEMENT PIPELINE ROUTE**

DRAWN: MLB CHECKED: ...  
 DATE: August 31, 2018 SCALE: 1:6,000  
 Map 337 of 378

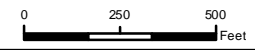


COUNTY: St. Louis

TOWNSHIP: Halden & Floodwood



- PUC Designated Route
- ROW
- Line 3R Pipeline
- Valve Location
- Enbridge Pump Station
- Mile Post
- Temporary Workspace
- Additional Temporary Workspace
- Existing Enbridge Pipelines
- Existing Electric Transmission
- Existing Third Party Pipelines
- Surveyed Waterbodies
- ESA
- Surveyed Wetlands
- NWI Wetlands
- Tract Boundary
- MN Section Boundary
- Township/City Boundary
- County Boundary



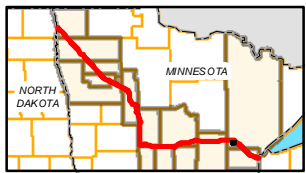
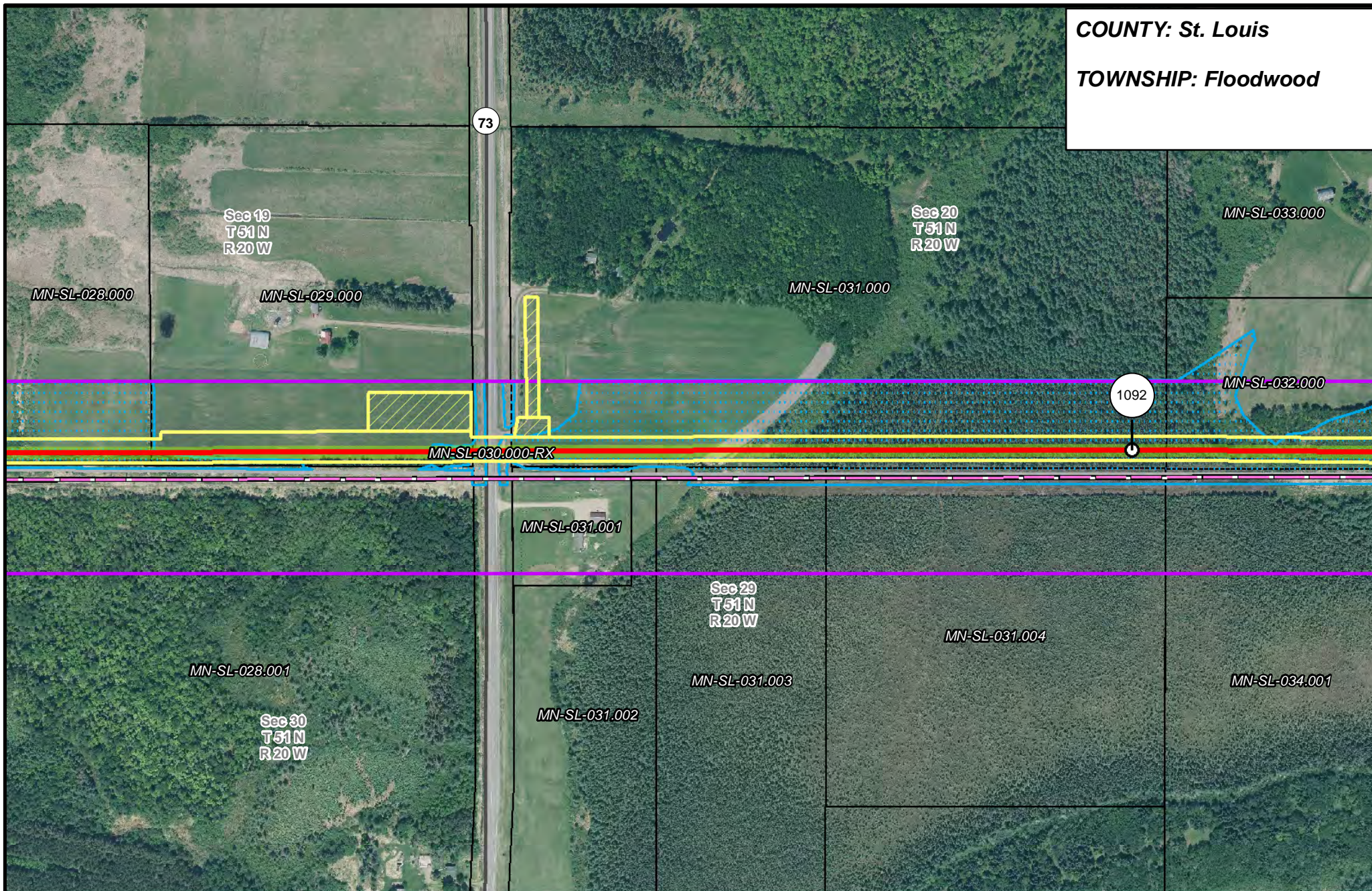
**LINE 3 REPLACEMENT PIPELINE ROUTE**

DRAWN: MLB CHECKED: ...  
DATE: August 31, 2018 SCALE: 1:5,000

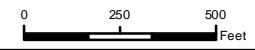
Map 338 of 378



**COUNTY: St. Louis**  
**TOWNSHIP: Floodwood**



- PUC Designated Route
- ROW
- Line 3R Pipeline
- Valve Location
- Enbridge Pump Station
- Temporary Workspace
- Additional Temporary Workspace
- Existing Enbridge Pipelines
- Existing Electric Transmission
- Existing Third Party Pipelines
- Mile Post
- Surveyed Waterbodies
- ESA
- Surveyed Wetlands
- NWI Wetlands
- Tract Boundary
- MN Section Boundary
- Township/City Boundary
- County Boundary

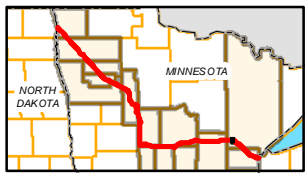
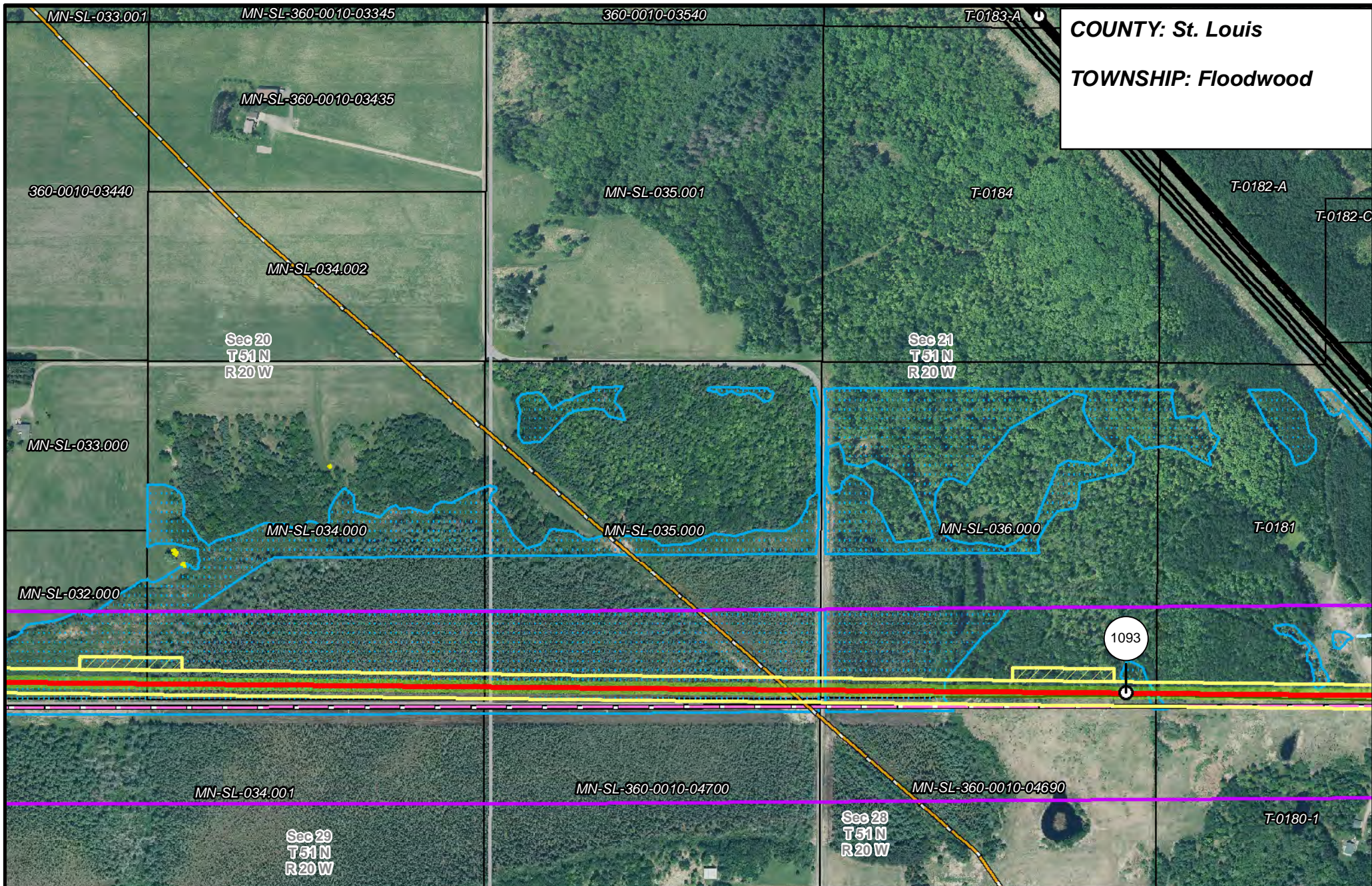


**LINE 3 REPLACEMENT PIPELINE ROUTE**

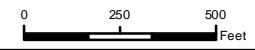
DRAWN: *MLB* CHECKED: *---*  
 DATE: August 31, 2018 SCALE: 1:5,000  
 Map 339 of 378



**COUNTY: St. Louis**  
**TOWNSHIP: Floodwood**



- |                       |                                |                                |                        |
|-----------------------|--------------------------------|--------------------------------|------------------------|
| PUC Designated Route  | Mile Post                      | Surveyed Waterbodies           | Tract Boundary         |
| ROW                   | Temporary Workspace            | ESA                            | MN Section Boundary    |
| Line 3R Pipeline      | Additional Temporary Workspace | Surveyed Wetlands              | Township/City Boundary |
| Valve Location        | Existing Enbridge Pipelines    | NWI Wetlands                   | County Boundary        |
| Enbridge Pump Station | Existing Electric Transmission | Existing Third Party Pipelines |                        |



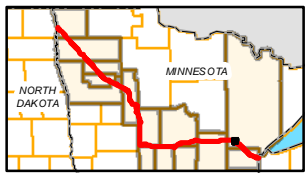
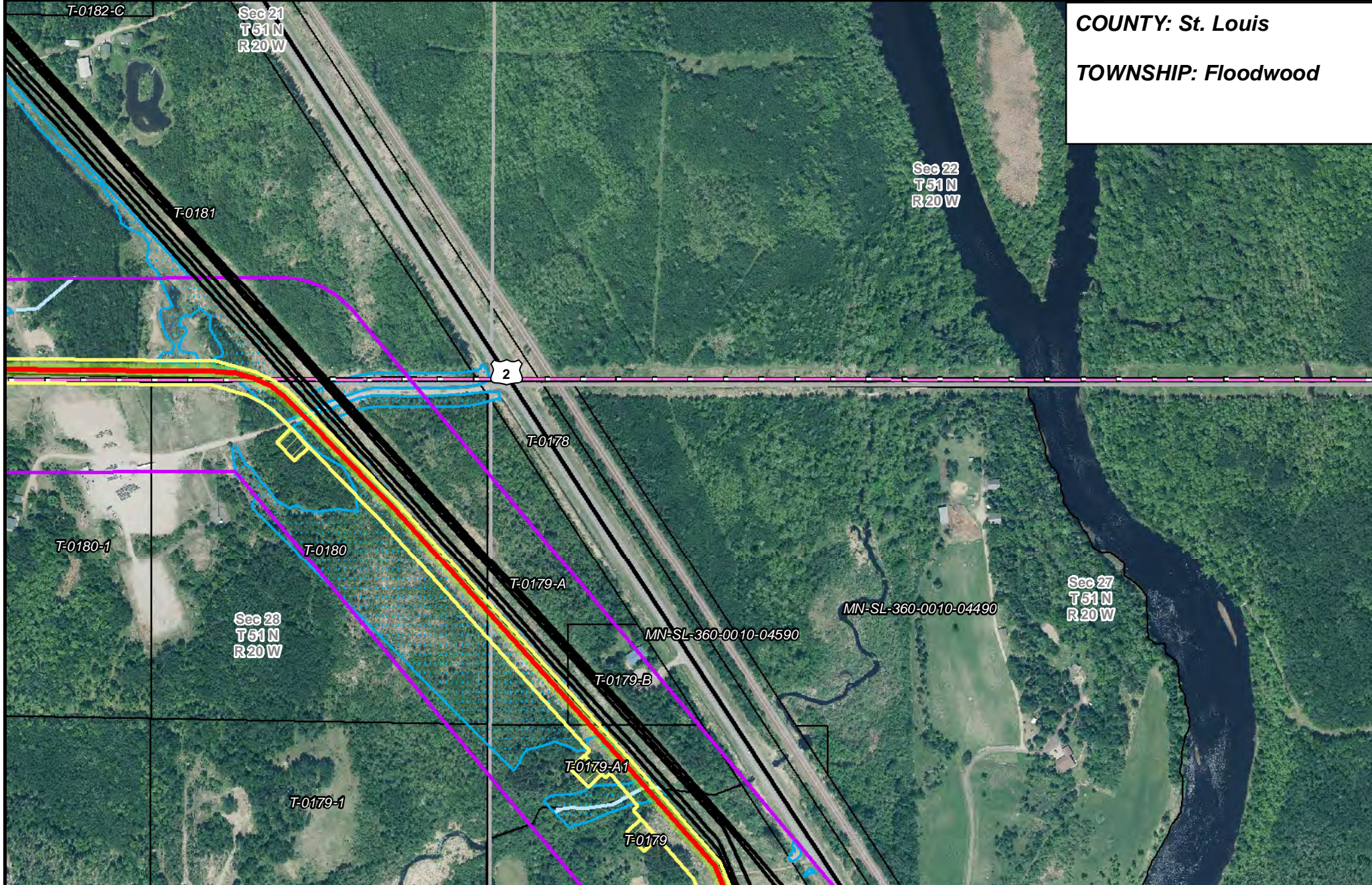
**LINE 3 REPLACEMENT PIPELINE ROUTE**

DRAWN: MLB      CHECKED: ...  
 DATE: August 31, 2018      SCALE: 1:5,000

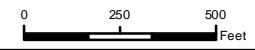
Map 340 of 378



**COUNTY: St. Louis**  
**TOWNSHIP: Floodwood**



- |                       |                                |                      |                        |
|-----------------------|--------------------------------|----------------------|------------------------|
| PUC Designated Route  | Mile Post                      | Surveyed Waterbodies | Tract Boundary         |
| ROW                   | Temporary Workspace            | ESA                  | MN Section Boundary    |
| Line 3R Pipeline      | Additional Temporary Workspace | Surveyed Wetlands    | Township/City Boundary |
| Valve Location        | Existing Enbridge Pipelines    | NWI Wetlands         | County Boundary        |
| Enbridge Pump Station | Existing Electric Transmission |                      |                        |
|                       | Existing Third Party Pipelines |                      |                        |



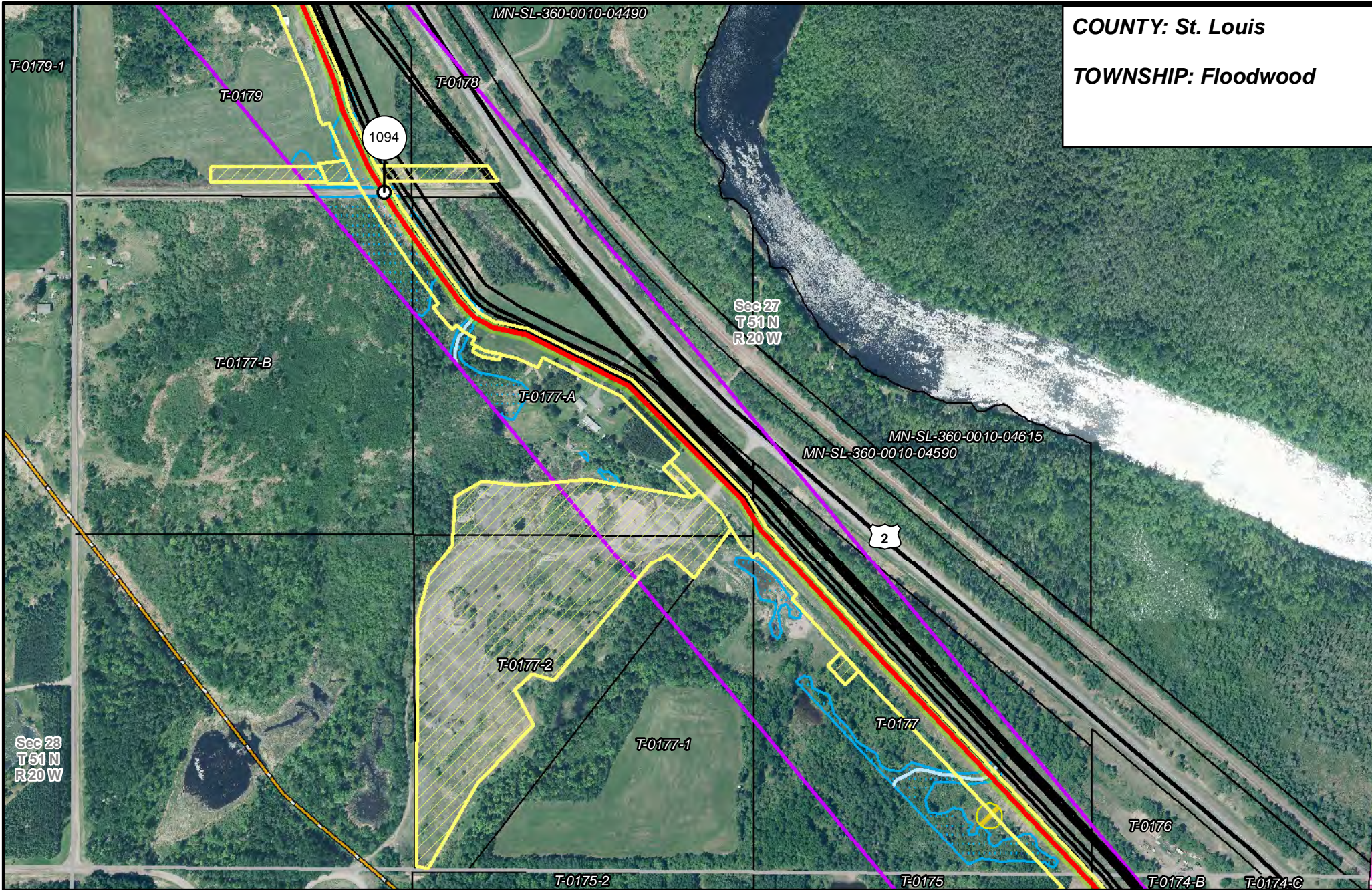
**LINE 3 REPLACEMENT PIPELINE ROUTE**

DRAWN: *MLB* CHECKED: *---*  
 DATE: August 31, 2018 SCALE: 1:6,000  
 Map 341 of 378

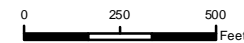


COUNTY: St. Louis

TOWNSHIP: Floodwood



- |                       |                                |                                |                        |
|-----------------------|--------------------------------|--------------------------------|------------------------|
| PUC Designated Route  | Mile Post                      | Surveyed Waterbodies           | Tract Boundary         |
| ROW                   | Temporary Workspace            | ESA                            | MN Section Boundary    |
| Line 3R Pipeline      | Additional Temporary Workspace | Surveyed Wetlands              | Township/City Boundary |
| Valve Location        | Existing Enbridge Pipelines    | NWI Wetlands                   | County Boundary        |
| Enbridge Pump Station | Existing Electric Transmission | Existing Third Party Pipelines |                        |

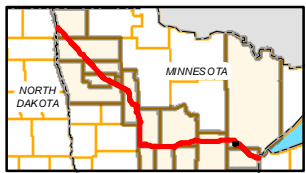
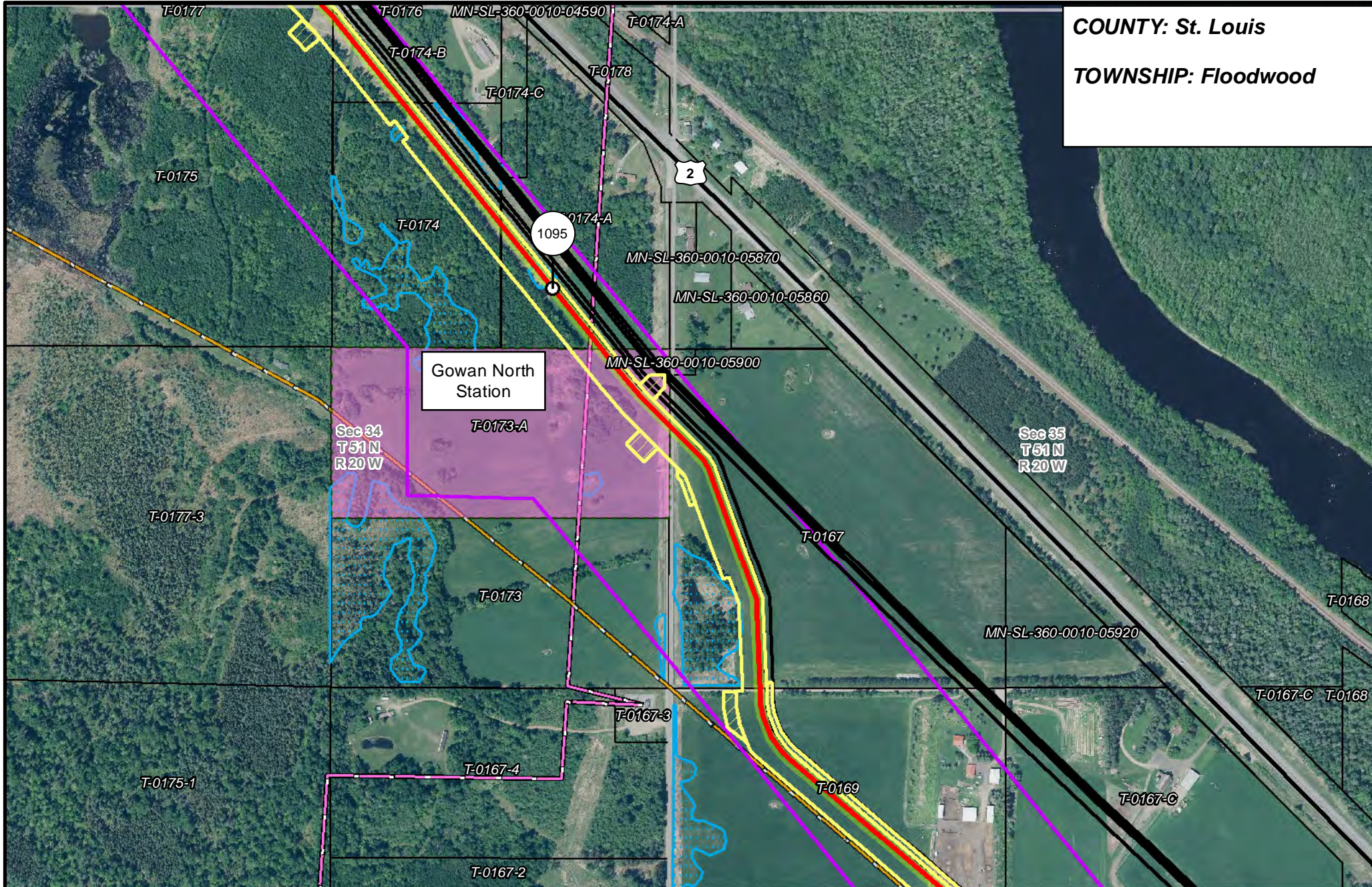


### LINE 3 REPLACEMENT PIPELINE ROUTE

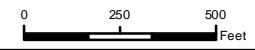
DRAWN: MLB      CHECKED: ...  
DATE: August 31, 2018      SCALE: 1:6,000  
Map 342 of 378



**COUNTY: St. Louis**  
**TOWNSHIP: Floodwood**



- |                       |                                |                      |                        |
|-----------------------|--------------------------------|----------------------|------------------------|
| PUC Designated Route  | Mile Post                      | Surveyed Waterbodies | Tract Boundary         |
| ROW                   | Temporary Workspace            | ESA                  | MN Section Boundary    |
| Line 3R Pipeline      | Additional Temporary Workspace | Surveyed Wetlands    | Township/City Boundary |
| Valve Location        | Existing Enbridge Pipelines    | NWI Wetlands         | County Boundary        |
| Enbridge Pump Station | Existing Electric Transmission |                      |                        |
|                       | Existing Third Party Pipelines |                      |                        |



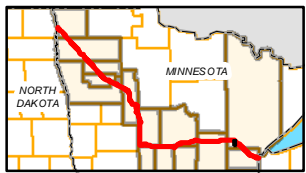
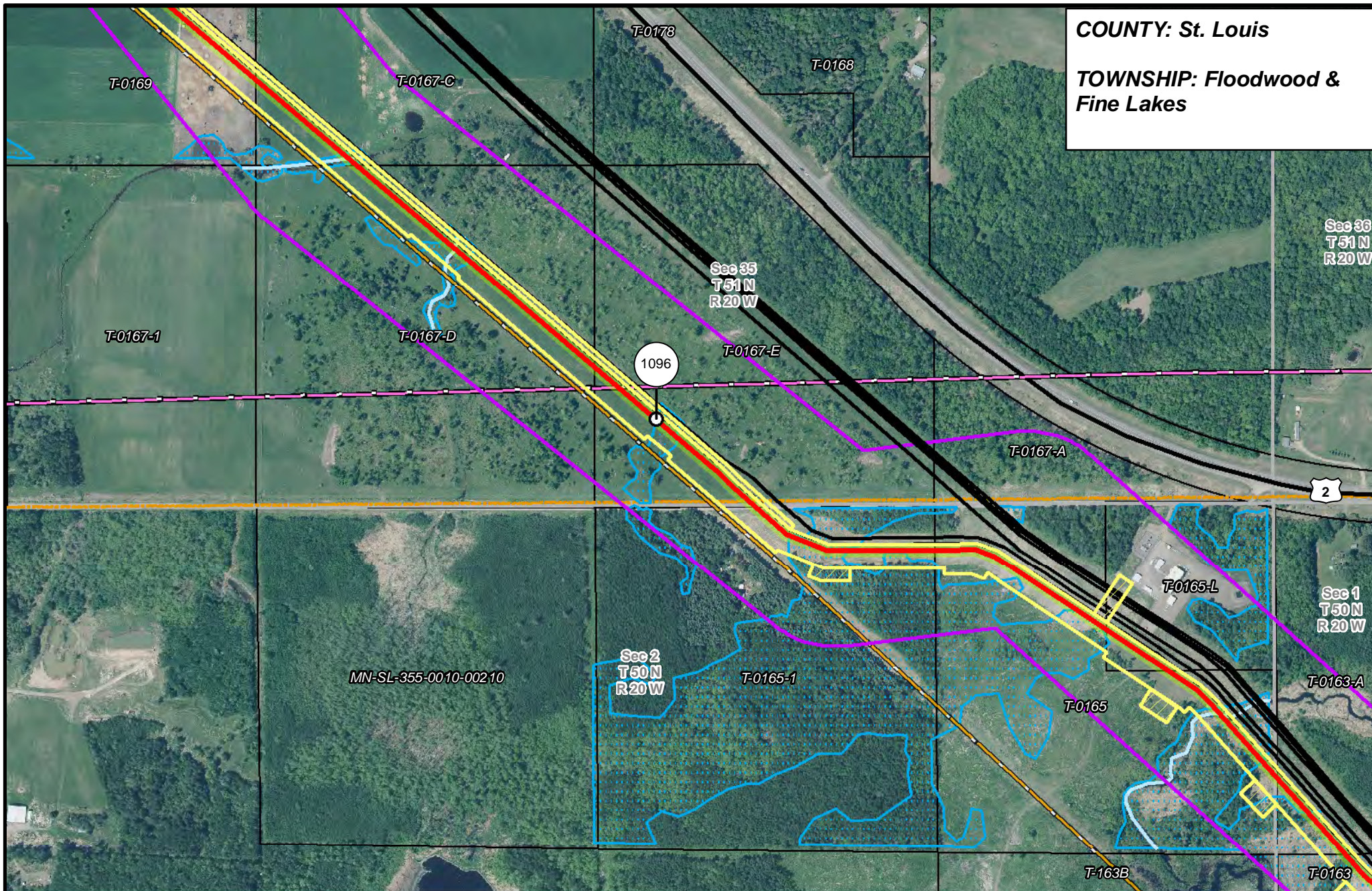
**LINE 3 REPLACEMENT PIPELINE ROUTE**

DRAWN: *MLB* CHECKED: *---*  
 DATE: August 31, 2018 SCALE: 1:5,000

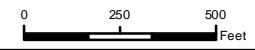
Map 343 of 378



**COUNTY:** St. Louis  
**TOWNSHIP:** Floodwood & Fine Lakes



- |                       |                                |                                |                        |
|-----------------------|--------------------------------|--------------------------------|------------------------|
| PUC Designated Route  | Mile Post                      | Surveyed Waterbodies           | Tract Boundary         |
| ROW                   | Temporary Workspace            | ESA                            | MN Section Boundary    |
| Line 3R Pipeline      | Additional Temporary Workspace | Surveyed Wetlands              | Township/City Boundary |
| Valve Location        | Existing Enbridge Pipelines    | NWI Wetlands                   | County Boundary        |
| Enbridge Pump Station | Existing Electric Transmission | Existing Third Party Pipelines |                        |

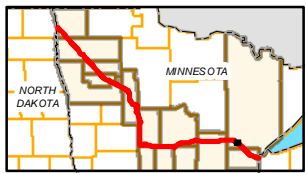
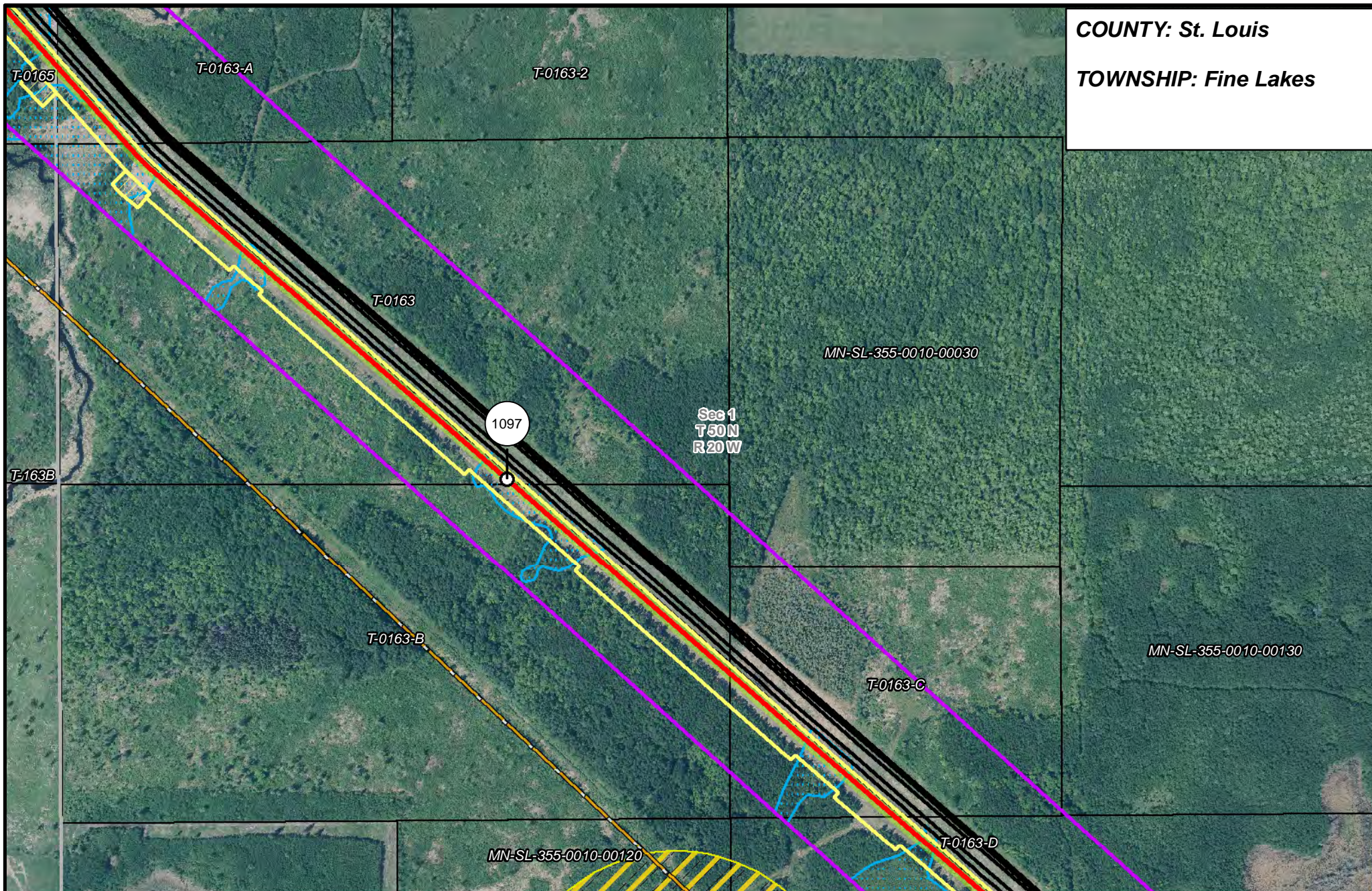


**LINE 3 REPLACEMENT PIPELINE ROUTE**

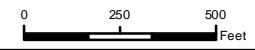
DRAWN: MLB      CHECKED: ...  
 DATE: August 31, 2018      SCALE: 1:5,000  
 Map 344 of 378



**COUNTY: St. Louis**  
**TOWNSHIP: Fine Lakes**



- |                       |                                |                      |                        |
|-----------------------|--------------------------------|----------------------|------------------------|
| PUC Designated Route  | Mile Post                      | Surveyed Waterbodies | Tract Boundary         |
| ROW                   | Temporary Workspace            | ESA                  | MN Section Boundary    |
| Line 3R Pipeline      | Additional Temporary Workspace | Surveyed Wetlands    | Township/City Boundary |
| Valve Location        | Existing Enbridge Pipelines    | NWI Wetlands         | County Boundary        |
| Enbridge Pump Station | Existing Electric Transmission |                      |                        |
|                       | Existing Third Party Pipelines |                      |                        |



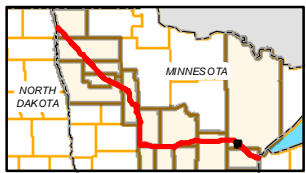
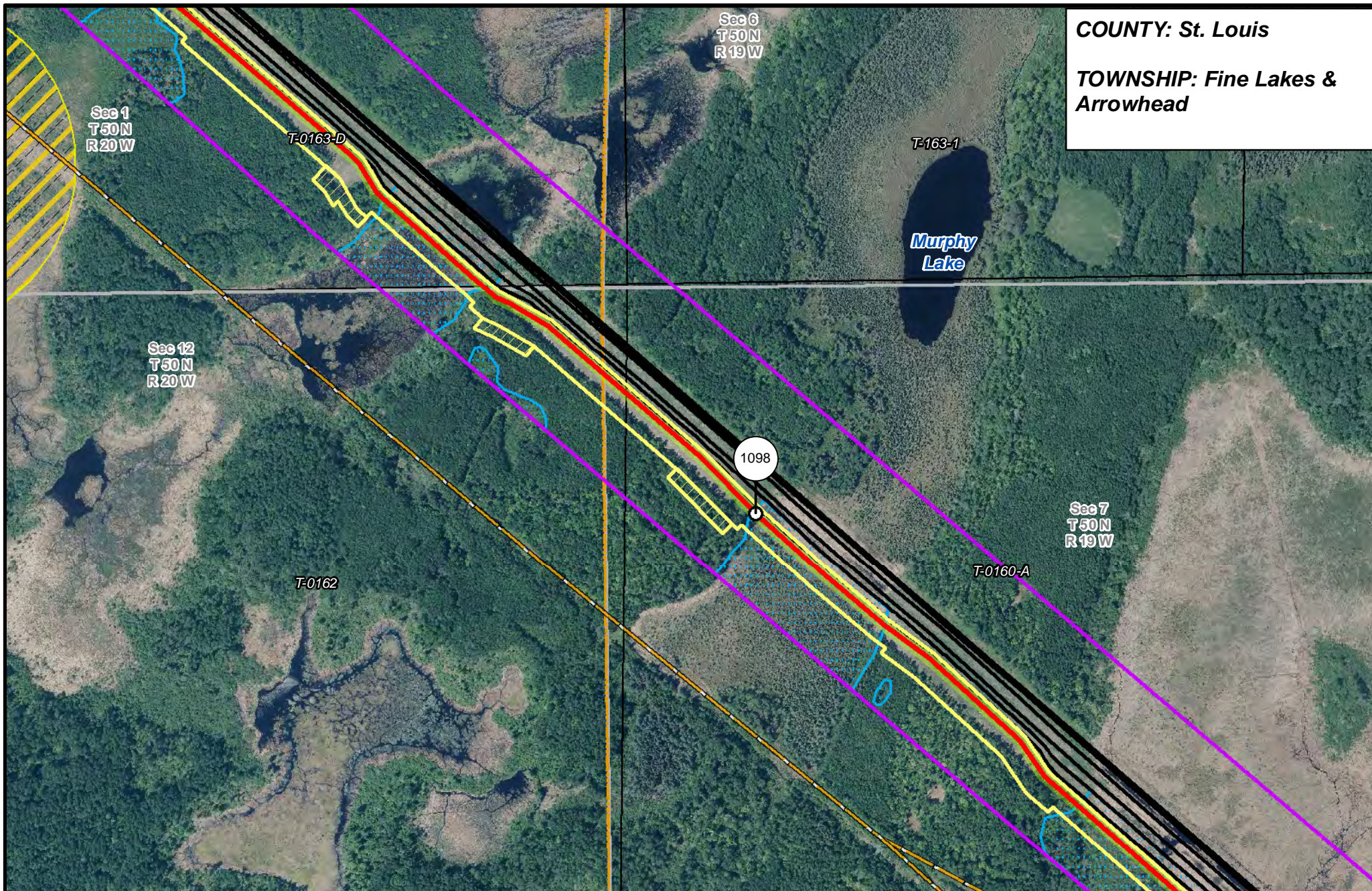
**LINE 3 REPLACEMENT PIPELINE ROUTE**

DRAWN: MLB      CHECKED: ...  
 DATE: August 31, 2018      SCALE: 1:5,000

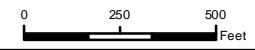
Map 345 of 378



**COUNTY:** St. Louis  
**TOWNSHIP:** Fine Lakes & Arrowhead



- |                       |                                |                      |                        |
|-----------------------|--------------------------------|----------------------|------------------------|
| PUC Designated Route  | Mile Post                      | Surveyed Waterbodies | Tract Boundary         |
| ROW                   | Temporary Workspace            | ESA                  | MN Section Boundary    |
| Line 3R Pipeline      | Additional Temporary Workspace | Surveyed Wetlands    | Township/City Boundary |
| Valve Location        | Existing Enbridge Pipelines    | NWI Wetlands         | County Boundary        |
| Enbridge Pump Station | Existing Electric Transmission |                      |                        |
|                       | Existing Third Party Pipelines |                      |                        |

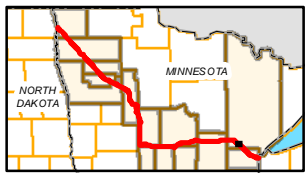
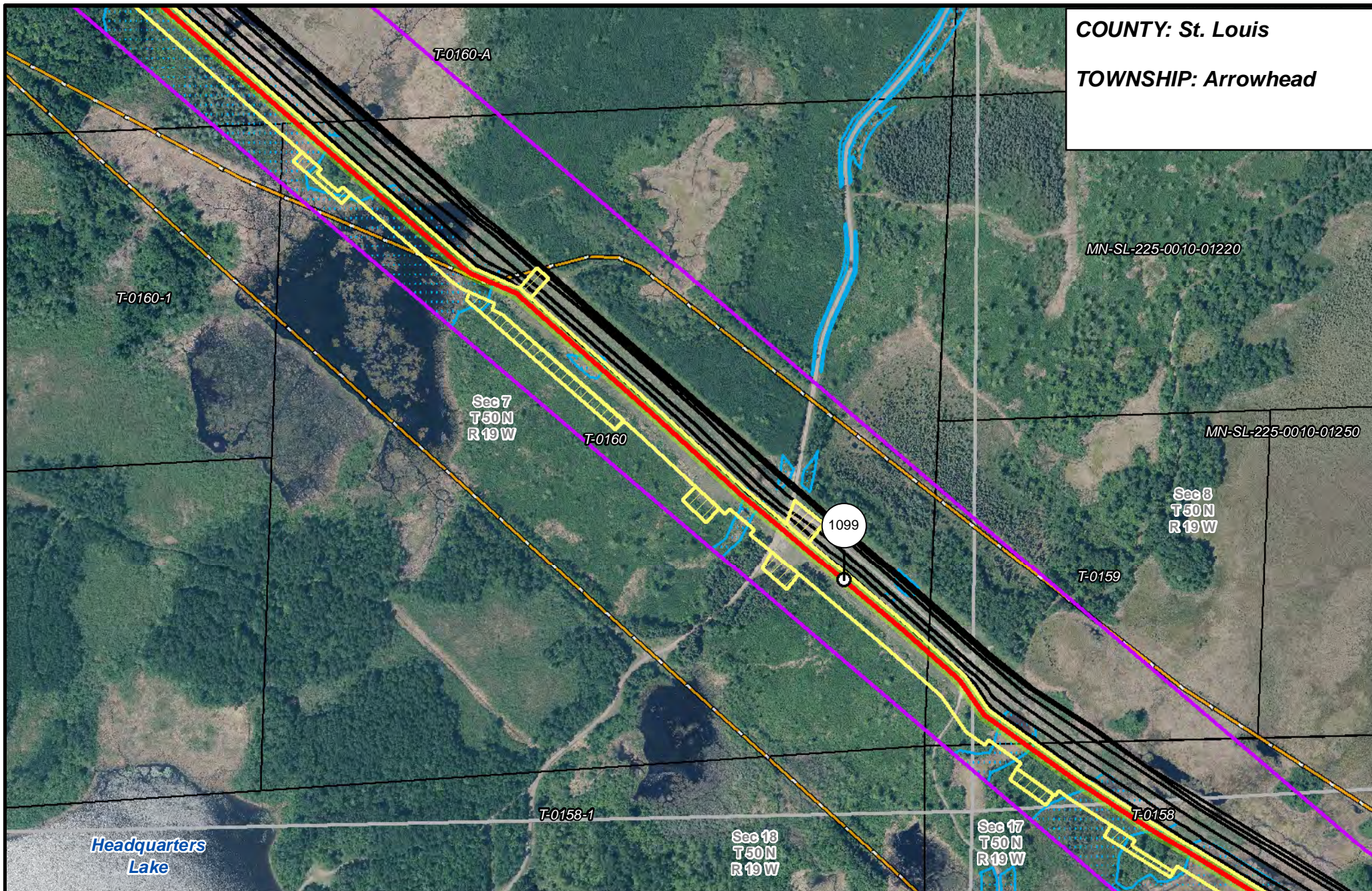


**LINE 3 REPLACEMENT PIPELINE ROUTE**

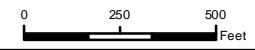
DRAWN: MLB CHECKED: ---  
 DATE: August 31, 2018 SCALE: 1:5,000  
 Map 346 of 378



**COUNTY: St. Louis**  
**TOWNSHIP: Arrowhead**



- |                       |                                |                      |                        |
|-----------------------|--------------------------------|----------------------|------------------------|
| PUC Designated Route  | Mile Post                      | Surveyed Waterbodies | Tract Boundary         |
| ROW                   | Temporary Workspace            | ESA                  | MN Section Boundary    |
| Line 3R Pipeline      | Additional Temporary Workspace | Surveyed Wetlands    | Township/City Boundary |
| Valve Location        | Existing Enbridge Pipelines    | NWI Wetlands         | County Boundary        |
| Enbridge Pump Station | Existing Electric Transmission |                      |                        |
|                       | Existing Third Party Pipelines |                      |                        |



**LINE 3 REPLACEMENT PIPELINE ROUTE**

DRAWN: MLB      CHECKED: ...  
 DATE: August 31, 2018      SCALE: 1:5,000

Map 347 of 378