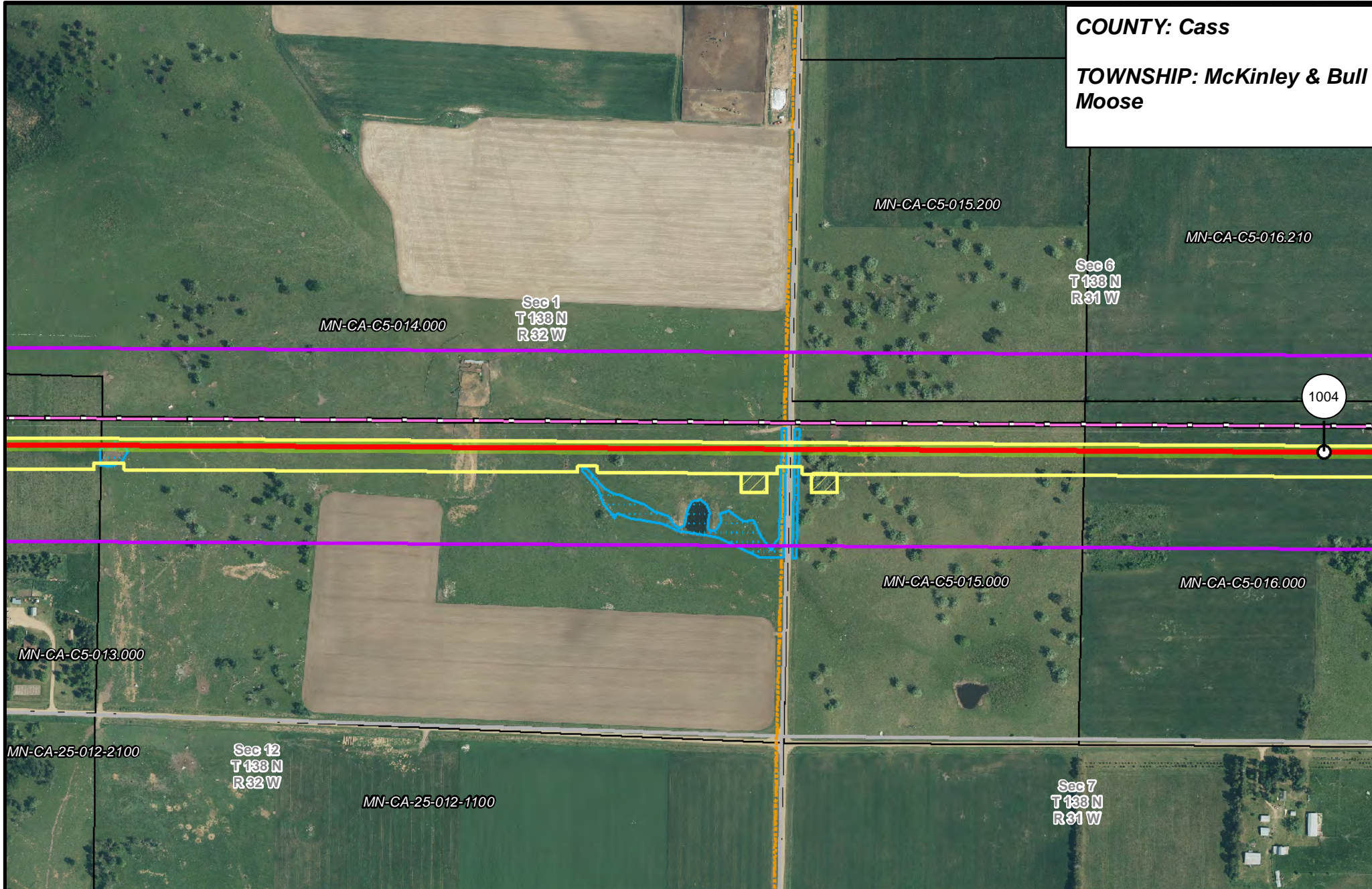


**COUNTY: Cass**  
**TOWNSHIP: McKinley & Bull Moose**



MN-CA-C5-014.000

Sec 1  
T 133 N  
R 32 W

MN-CA-C5-015.200

MN-CA-C5-016.210

Sec 6  
T 133 N  
R 31 W

1004

MN-CA-C5-013.000

MN-CA-C5-015.000

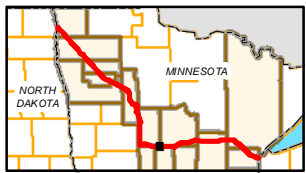
MN-CA-C5-016.000

MN-CA-25-012-2100

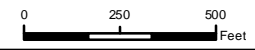
Sec 12  
T 133 N  
R 32 W

MN-CA-25-012-1100

Sec 7  
T 133 N  
R 31 W



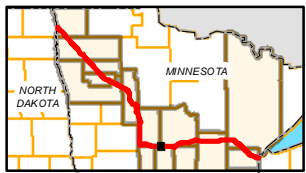
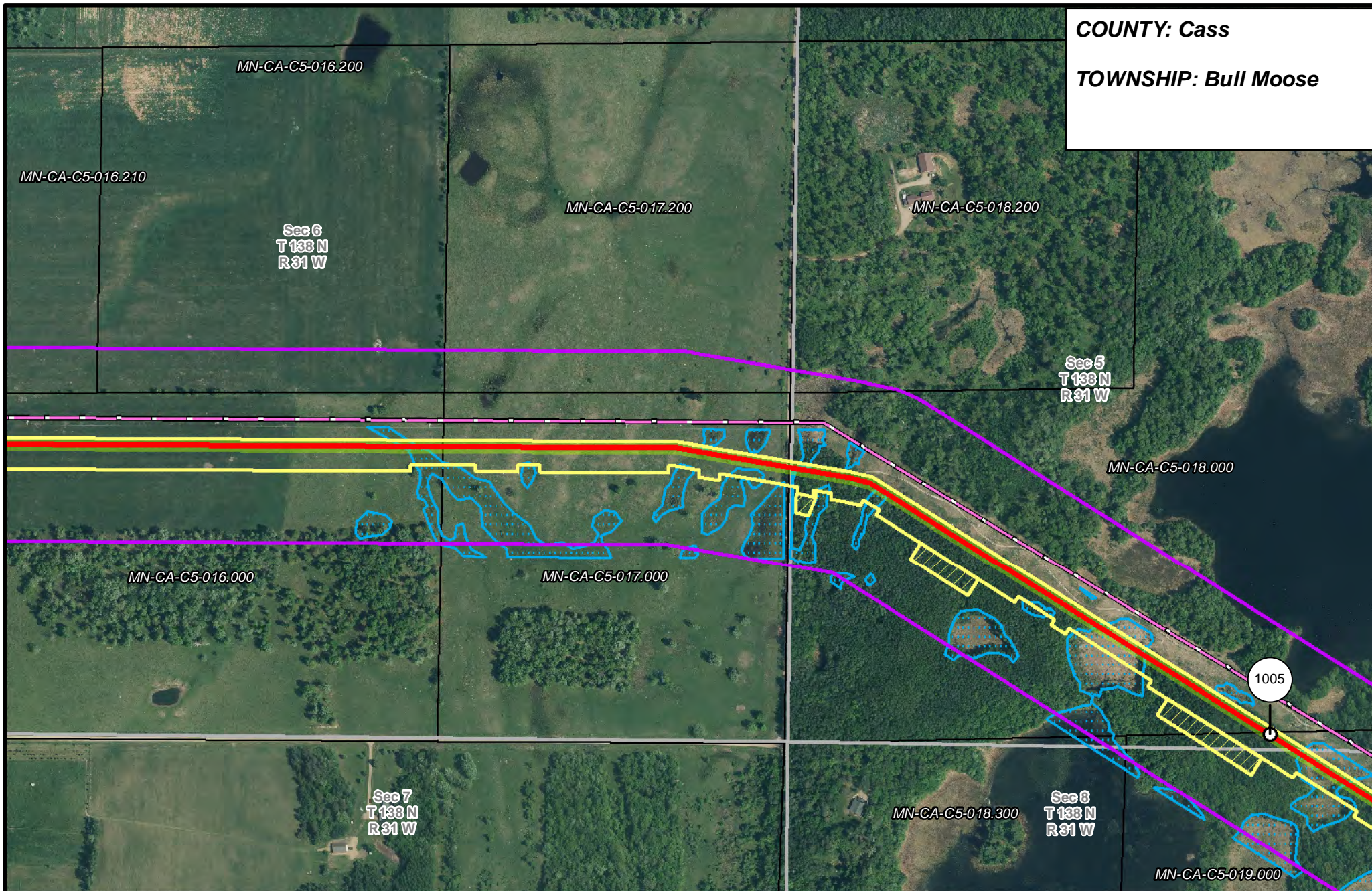
- PUC Designated Route
- Mile Post
- Surveyed Waterbodies
- Tract Boundary
- ROW
- Temporary Workspace
- ESA
- MN Section Boundary
- Line 3R Pipeline
- Additional Temporary Workspace
- Surveyed Wetlands
- Township/City Boundary
- Valve Location
- Existing Enbridge Pipelines
- NWI Wetlands
- County Boundary
- Enbridge Pump Station
- Existing Electric Transmission
- Existing Third Party Pipelines



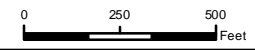
**LINE 3 REPLACEMENT PIPELINE ROUTE**

DRAWN: MLB      CHECKED: --  
 DATE: August 31, 2018      SCALE: 1:5,000  
 Map 251 of 378

**COUNTY: Cass**  
**TOWNSHIP: Bull Moose**



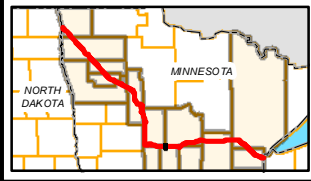
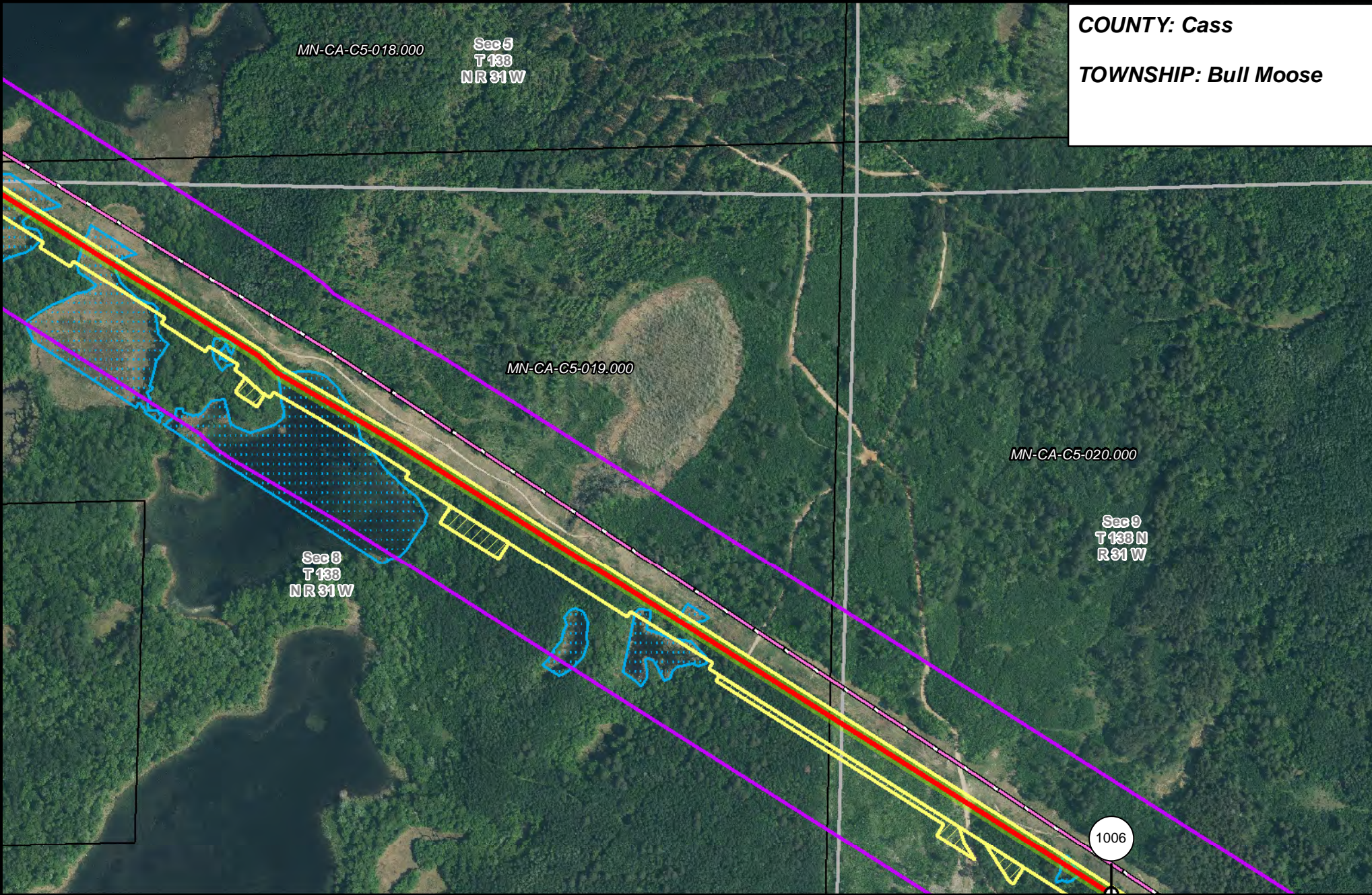
- |                       |                                |                                |                        |
|-----------------------|--------------------------------|--------------------------------|------------------------|
| PUC Designated Route  | Mile Post                      | Surveyed Waterbodies           | Tract Boundary         |
| ROW                   | Temporary Workspace            | ESA                            | MN Section Boundary    |
| Line 3R Pipeline      | Additional Temporary Workspace | Surveyed Wetlands              | Township/City Boundary |
| Valve Location        | Existing Enbridge Pipelines    | NWI Wetlands                   | County Boundary        |
| Enbridge Pump Station | Existing Electric Transmission | Existing Third Party Pipelines |                        |



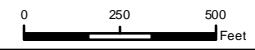
**LINE 3 REPLACEMENT PIPELINE ROUTE**

DRAWN: MLB CHECKED: --  
 DATE: August 31, 2018 SCALE: 1:5,000  
 Map 252 of 378

**COUNTY: Cass**  
**TOWNSHIP: Bull Moose**



- |                       |                                |                      |                        |
|-----------------------|--------------------------------|----------------------|------------------------|
| PUC Designated Route  | Mile Post                      | Surveyed Waterbodies | Tract Boundary         |
| ROW                   | Temporary Workspace            | ESA                  | MN Section Boundary    |
| Line 3R Pipeline      | Additional Temporary Workspace | Surveyed Wetlands    | Township/City Boundary |
| Valve Location        | Existing Enbridge Pipelines    | NWI Wetlands         | County Boundary        |
| Enbridge Pump Station | Existing Electric Transmission |                      |                        |
|                       | Existing Third Party Pipelines |                      |                        |



**LINE 3 REPLACEMENT PIPELINE ROUTE**

DRAWN: MLB CHECKED: --  
 DATE: August 31, 2018 SCALE: 1:5,000  
 Map 253 of 378

**COUNTY: Cass**  
**TOWNSHIP: Bull Moose**

1006

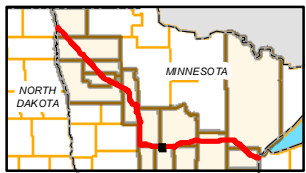
Sec 9  
T 133 N  
R 31 W

MN-CA-C5-020.000

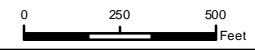
Sec 10  
T 133 N  
R 31 W

Sec 16  
T 133 N  
R 31 W

Sec 15  
T 133  
N R 31 W



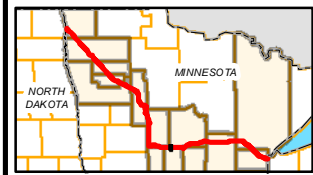
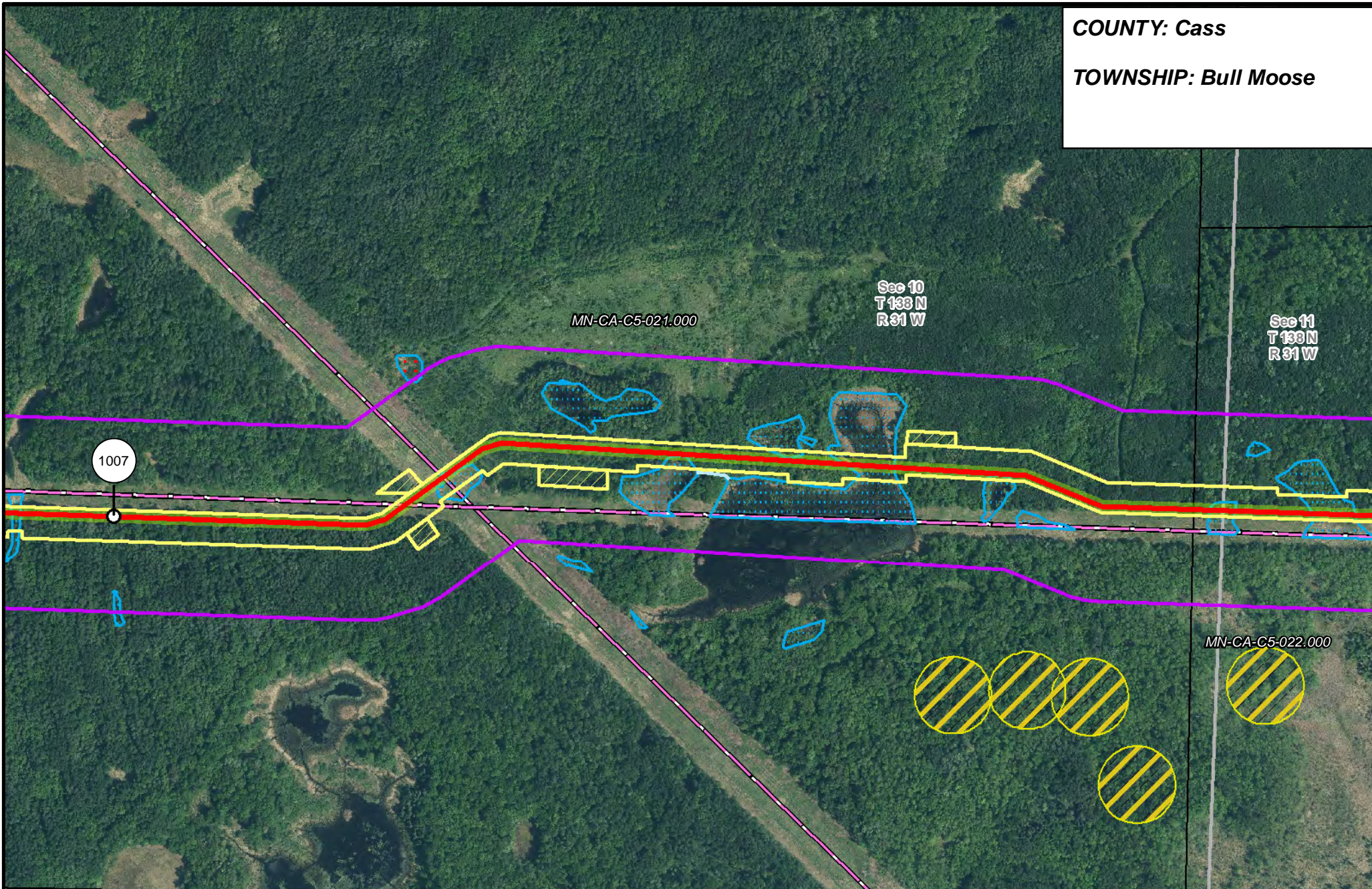
- |                       |                                |                                |                        |
|-----------------------|--------------------------------|--------------------------------|------------------------|
| PUC Designated Route  | Mile Post                      | Surveyed Waterbodies           | Tract Boundary         |
| ROW                   | Temporary Workspace            | ESA                            | MN Section Boundary    |
| Line 3R Pipeline      | Additional Temporary Workspace | Surveyed Wetlands              | Township/City Boundary |
| Valve Location        | Existing Enbridge Pipelines    | NWI Wetlands                   | County Boundary        |
| Enbridge Pump Station | Existing Electric Transmission | Existing Third Party Pipelines |                        |



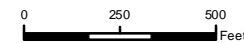
**LINE 3 REPLACEMENT PIPELINE ROUTE**

DRAWN: MLB CHECKED: --  
 DATE: August 31, 2018 SCALE: 1:5,000  
 Map 254 of 378

**COUNTY: Cass**  
**TOWNSHIP: Bull Moose**



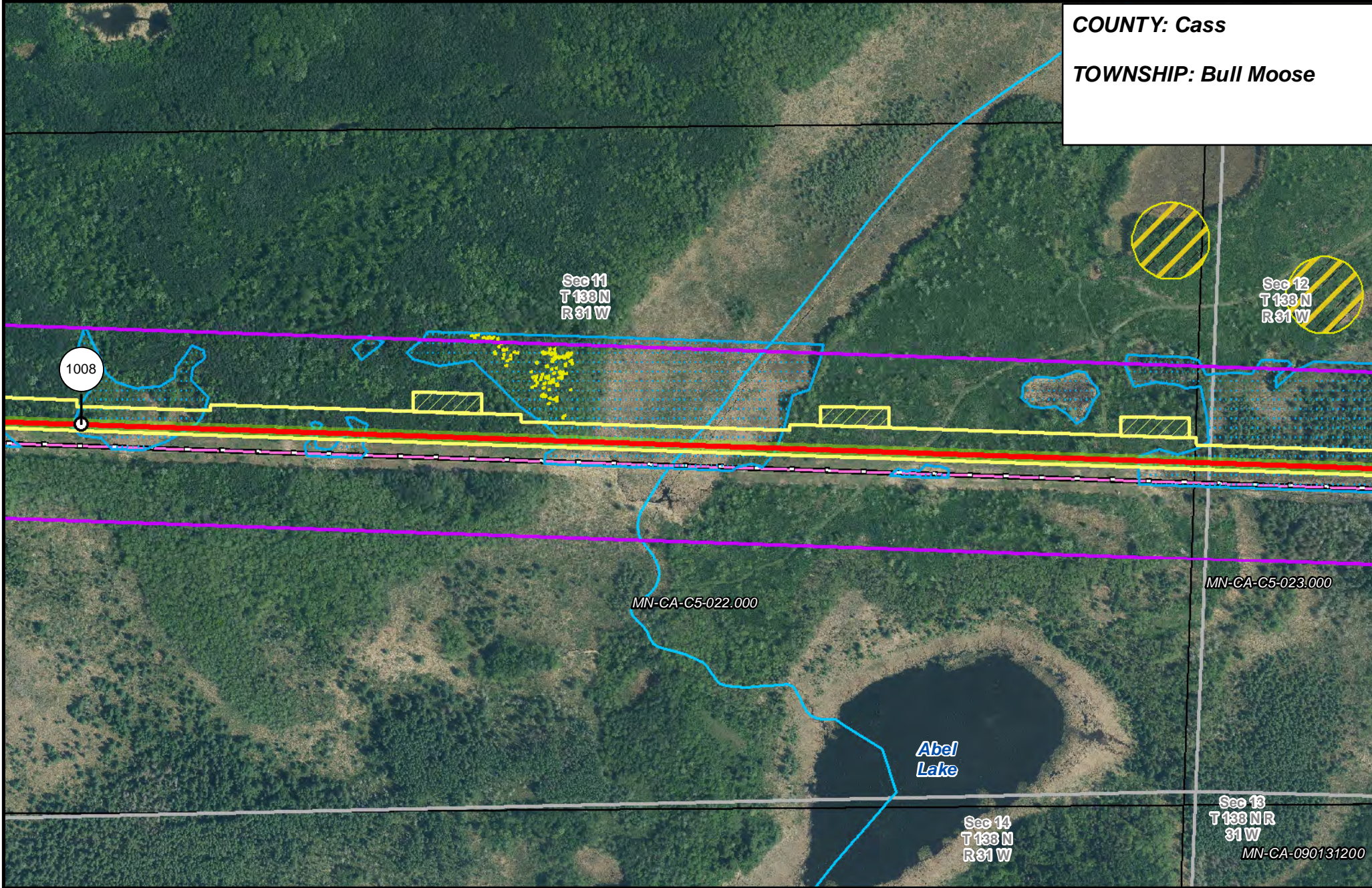
- |                       |                                |                      |                        |
|-----------------------|--------------------------------|----------------------|------------------------|
| PUC Designated Route  | Mile Post                      | Surveyed Waterbodies | Tract Boundary         |
| ROW                   | Temporary Workspace            | ESA                  | MN Section Boundary    |
| Line 3R Pipeline      | Additional Temporary Workspace | Surveyed Wetlands    | Township/City Boundary |
| Valve Location        | Existing Enbridge Pipelines    | NWI Wetlands         | County Boundary        |
| Enbridge Pump Station | Existing Electric Transmission |                      |                        |
|                       | Existing Third Party Pipelines |                      |                        |



**LINE 3 REPLACEMENT PIPELINE ROUTE**

DRAWN: MLB      CHECKED: --  
 DATE: August 31, 2018      SCALE: 1:5,000  
 Map 255 of 378

**COUNTY: Cass**  
**TOWNSHIP: Bull Moose**



1008

Sec 11  
T 138 N  
R 31 W

Sec 12  
T 138 N  
R 31 W

MN-CA-C5-022.000

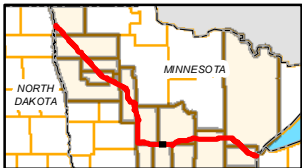
MN-CA-C5-023.000

Abel Lake

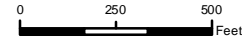
Sec 14  
T 138 N  
R 31 W

Sec 13  
T 138 N  
R 31 W

MN-CA-090131200



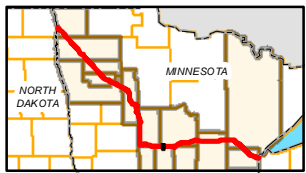
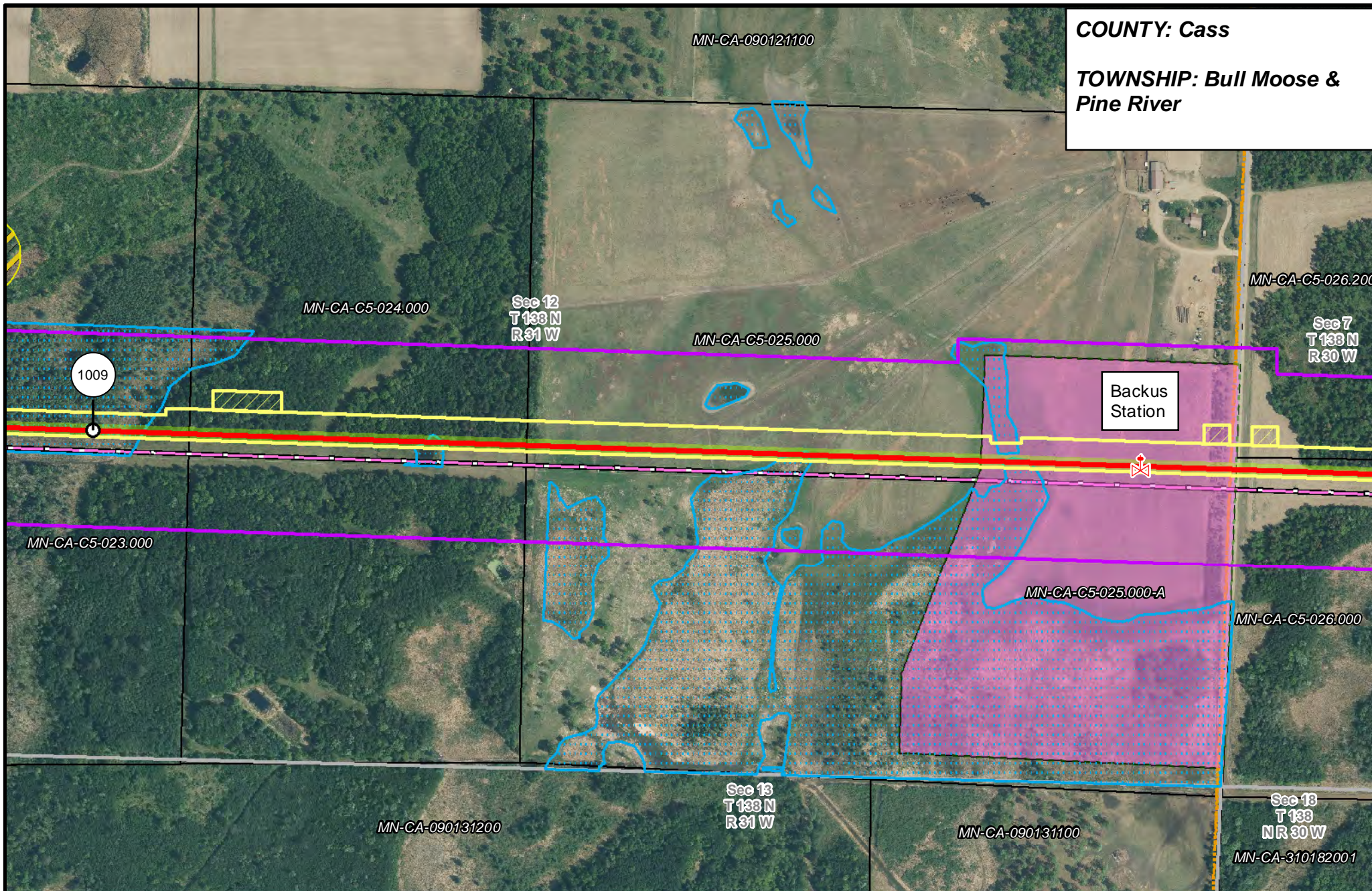
- |                       |                                |                      |                        |
|-----------------------|--------------------------------|----------------------|------------------------|
| PUC Designated Route  | Mile Post                      | Surveyed Waterbodies | Tract Boundary         |
| ROW                   | Temporary Workspace            | ESA                  | MN Section Boundary    |
| Line 3R Pipeline      | Additional Temporary Workspace | Surveyed Wetlands    | Township/City Boundary |
| Valve Location        | Existing Enbridge Pipelines    | NWI Wetlands         | County Boundary        |
| Enbridge Pump Station | Existing Electric Transmission |                      |                        |
|                       | Existing Third Party Pipelines |                      |                        |



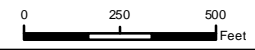
**LINE 3 REPLACEMENT PIPELINE ROUTE**

DRAWN: MLB CHECKED: --  
 DATE: August 31, 2018 SCALE: 1:5,000  
 Map 256 of 378

**COUNTY:** Cass  
**TOWNSHIP:** Bull Moose & Pine River



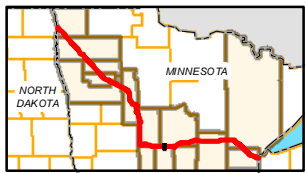
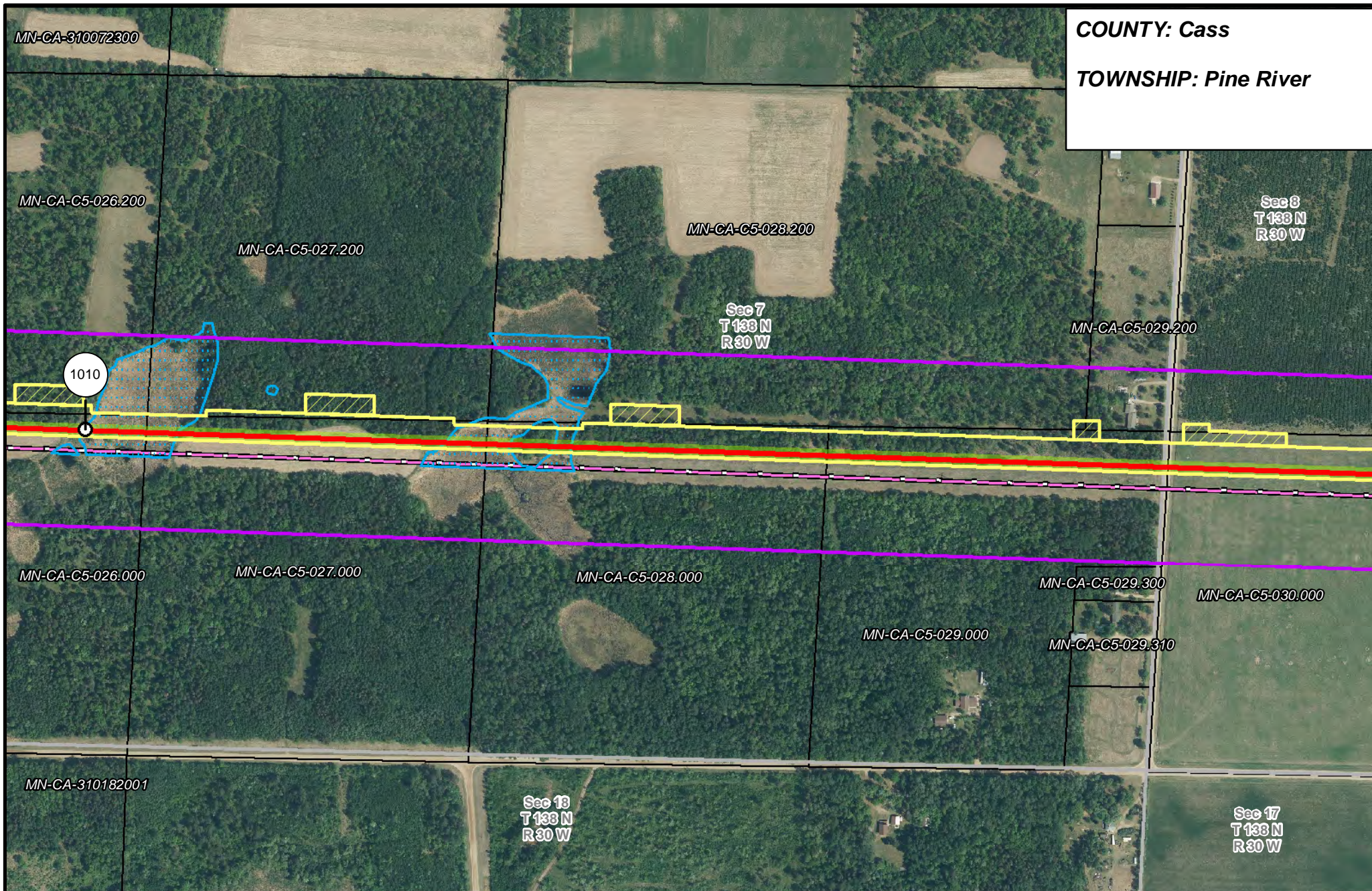
- |                                |                                |                      |                        |
|--------------------------------|--------------------------------|----------------------|------------------------|
| PUC Designated Route           | Mile Post                      | Surveyed Waterbodies | Tract Boundary         |
| ROW                            | Temporary Workspace            | ESA                  | MN Section Boundary    |
| Line 3R Pipeline               | Additional Temporary Workspace | Surveyed Wetlands    | Township/City Boundary |
| Valve Location                 | Existing Enbridge Pipelines    | NWI Wetlands         | County Boundary        |
| Enbridge Pump Station          | Existing Electric Transmission |                      |                        |
| Existing Third Party Pipelines |                                |                      |                        |



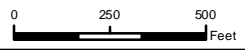
**LINE 3 REPLACEMENT PIPELINE ROUTE**

DRAWN: MLB      CHECKED: ---  
 DATE: August 31, 2018      SCALE: 1:5,000  
 Map 257 of 378

**COUNTY: Cass**  
**TOWNSHIP: Pine River**



- |                       |                                |                      |                        |
|-----------------------|--------------------------------|----------------------|------------------------|
| PUC Designated Route  | Mile Post                      | Surveyed Waterbodies | Tract Boundary         |
| ROW                   | Temporary Workspace            | ESA                  | MN Section Boundary    |
| Line 3R Pipeline      | Additional Temporary Workspace | Surveyed Wetlands    | Township/City Boundary |
| Valve Location        | Existing Enbridge Pipelines    | NWI Wetlands         | County Boundary        |
| Enbridge Pump Station | Existing Electric Transmission |                      |                        |
|                       | Existing Third Party Pipelines |                      |                        |

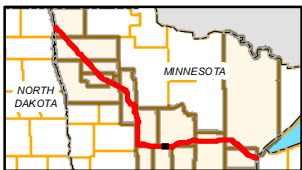
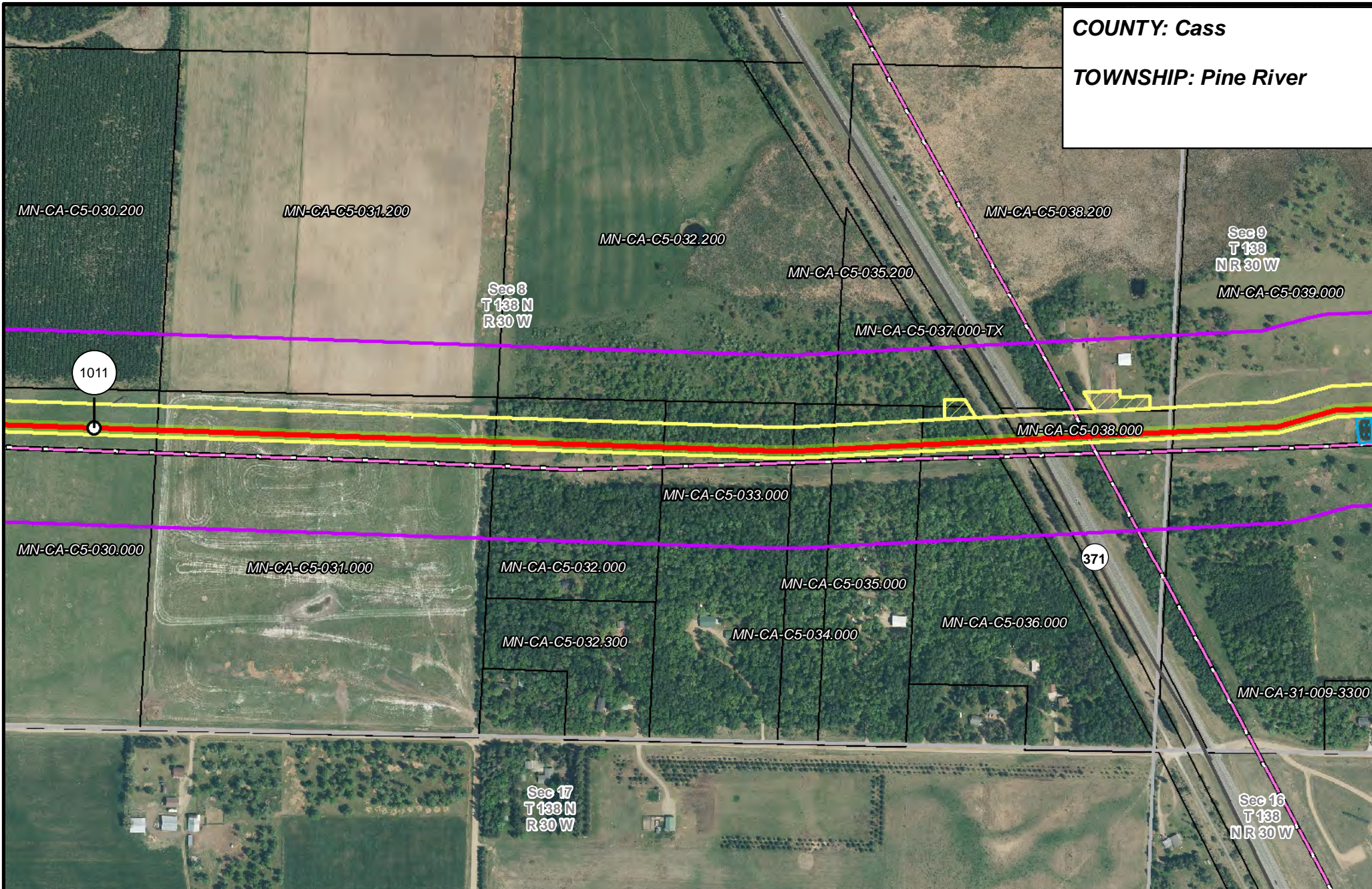


**LINE 3 REPLACEMENT PIPELINE ROUTE**

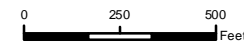
DRAWN: MLB CHECKED: --  
 DATE: August 31, 2018 SCALE: 1:5,000  
 Map 258 of 378



**COUNTY: Cass**  
**TOWNSHIP: Pine River**



- |                       |                                |                                |                        |
|-----------------------|--------------------------------|--------------------------------|------------------------|
| PUC Designated Route  | Mile Post                      | Surveyed Waterbodies           | Tract Boundary         |
| ROW                   | Temporary Workspace            | ESA                            | MN Section Boundary    |
| Line 3R Pipeline      | Additional Temporary Workspace | Surveyed Wetlands              | Township/City Boundary |
| Valve Location        | Existing Enbridge Pipelines    | NWI Wetlands                   | County Boundary        |
| Enbridge Pump Station | Existing Electric Transmission | Existing Third Party Pipelines |                        |

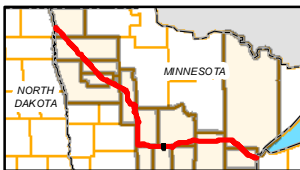
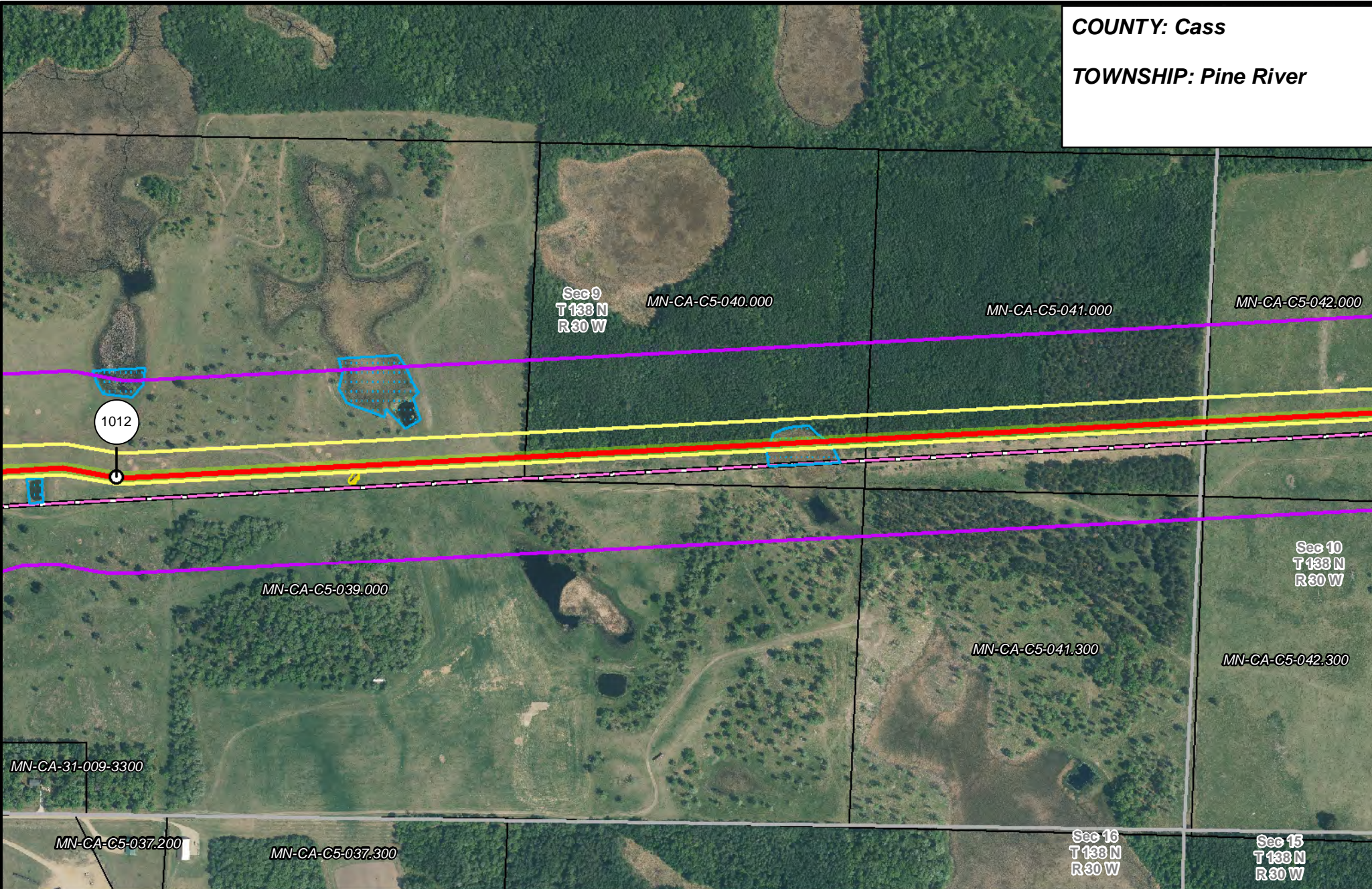


**LINE 3 REPLACEMENT PIPELINE ROUTE**

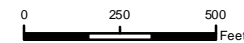
DRAWN: MLB      CHECKED: --  
 DATE: August 31, 2018      SCALE: 1:5,000

Map 259 of 378

**COUNTY: Cass**  
**TOWNSHIP: Pine River**



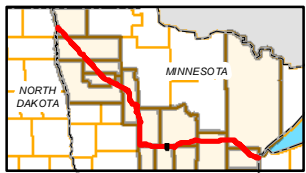
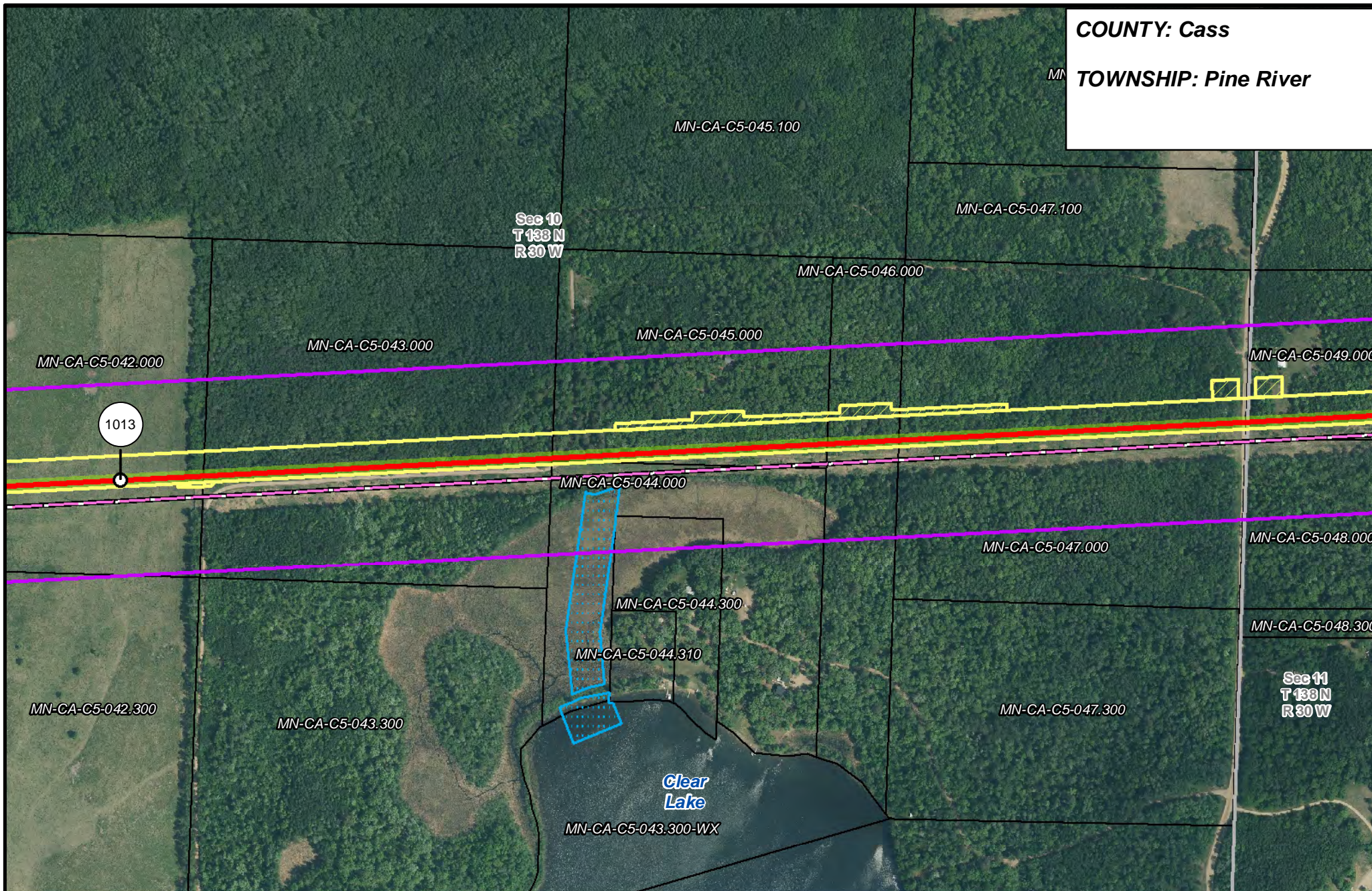
- |                       |                                |                      |                        |
|-----------------------|--------------------------------|----------------------|------------------------|
| PUC Designated Route  | Mile Post                      | Surveyed Waterbodies | Tract Boundary         |
| ROW                   | Temporary Workspace            | ESA                  | MN Section Boundary    |
| Line 3R Pipeline      | Additional Temporary Workspace | Surveyed Wetlands    | Township/City Boundary |
| Valve Location        | Existing Enbridge Pipelines    | NWI Wetlands         | County Boundary        |
| Enbridge Pump Station | Existing Electric Transmission |                      |                        |
|                       | Existing Third Party Pipelines |                      |                        |



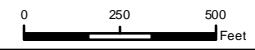
**LINE 3 REPLACEMENT PIPELINE ROUTE**

DRAWN: MLB CHECKED: --  
 DATE: August 31, 2018 SCALE: 1:5,000  
 Map 260 of 378

**COUNTY: Cass**  
**TOWNSHIP: Pine River**



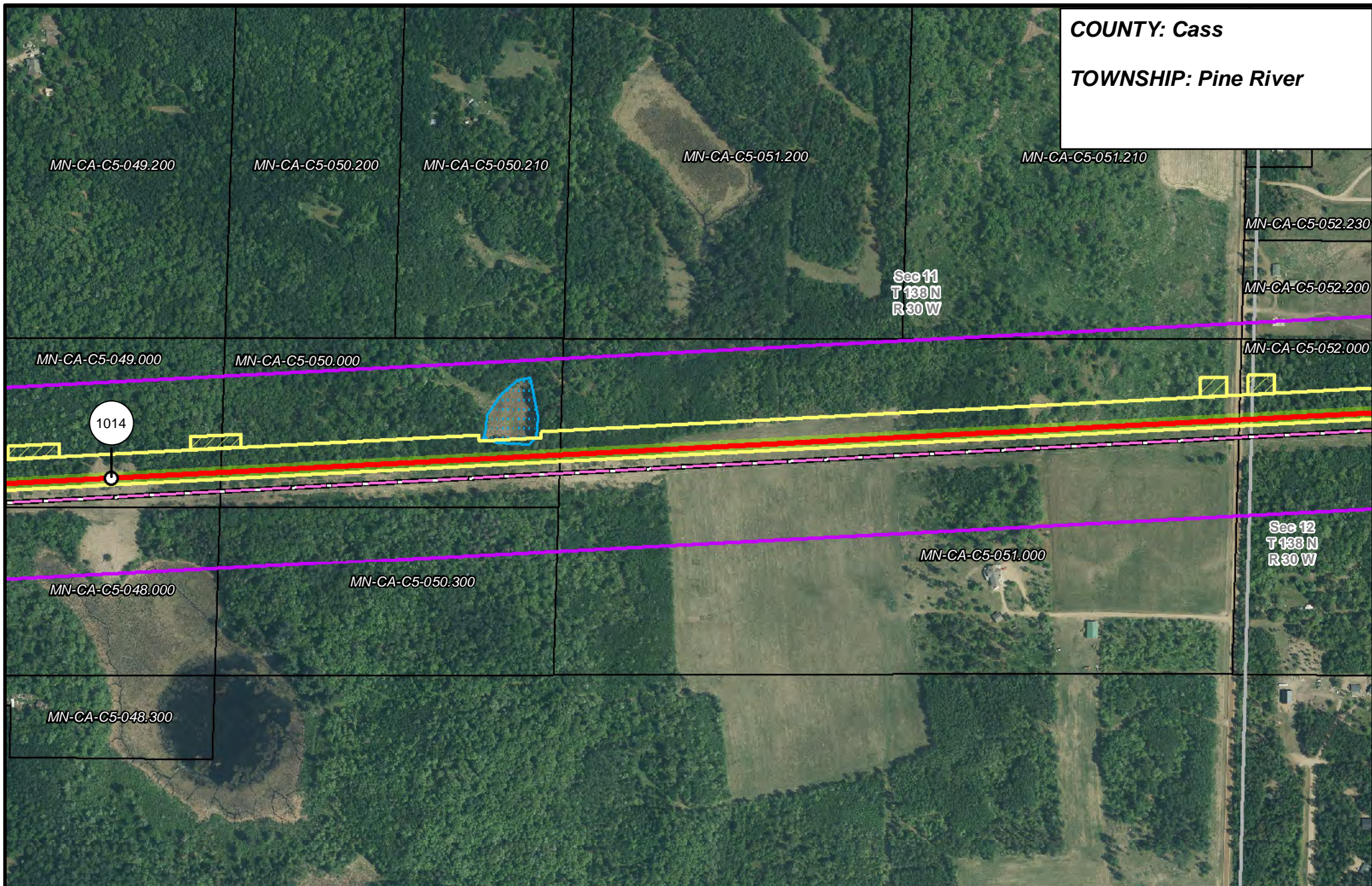
- |                       |                                |                                |                        |
|-----------------------|--------------------------------|--------------------------------|------------------------|
| PUC Designated Route  | Mile Post                      | Surveyed Waterbodies           | Tract Boundary         |
| ROW                   | Temporary Workspace            | ESA                            | MN Section Boundary    |
| Line 3R Pipeline      | Additional Temporary Workspace | Surveyed Wetlands              | Township/City Boundary |
| Valve Location        | Existing Enbridge Pipelines    | NWI Wetlands                   | County Boundary        |
| Enbridge Pump Station | Existing Electric Transmission | Existing Third Party Pipelines |                        |



**LINE 3 REPLACEMENT PIPELINE ROUTE**

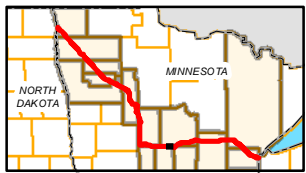
DRAWN: MLB CHECKED: --  
 DATE: August 31, 2018 SCALE: 1:5,000  
 Map 261 of 378

**COUNTY: Cass**  
**TOWNSHIP: Pine River**

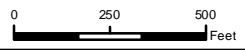


Sec 11  
T 133 N  
R 30 W

Sec 12  
T 133 N  
R 30 W



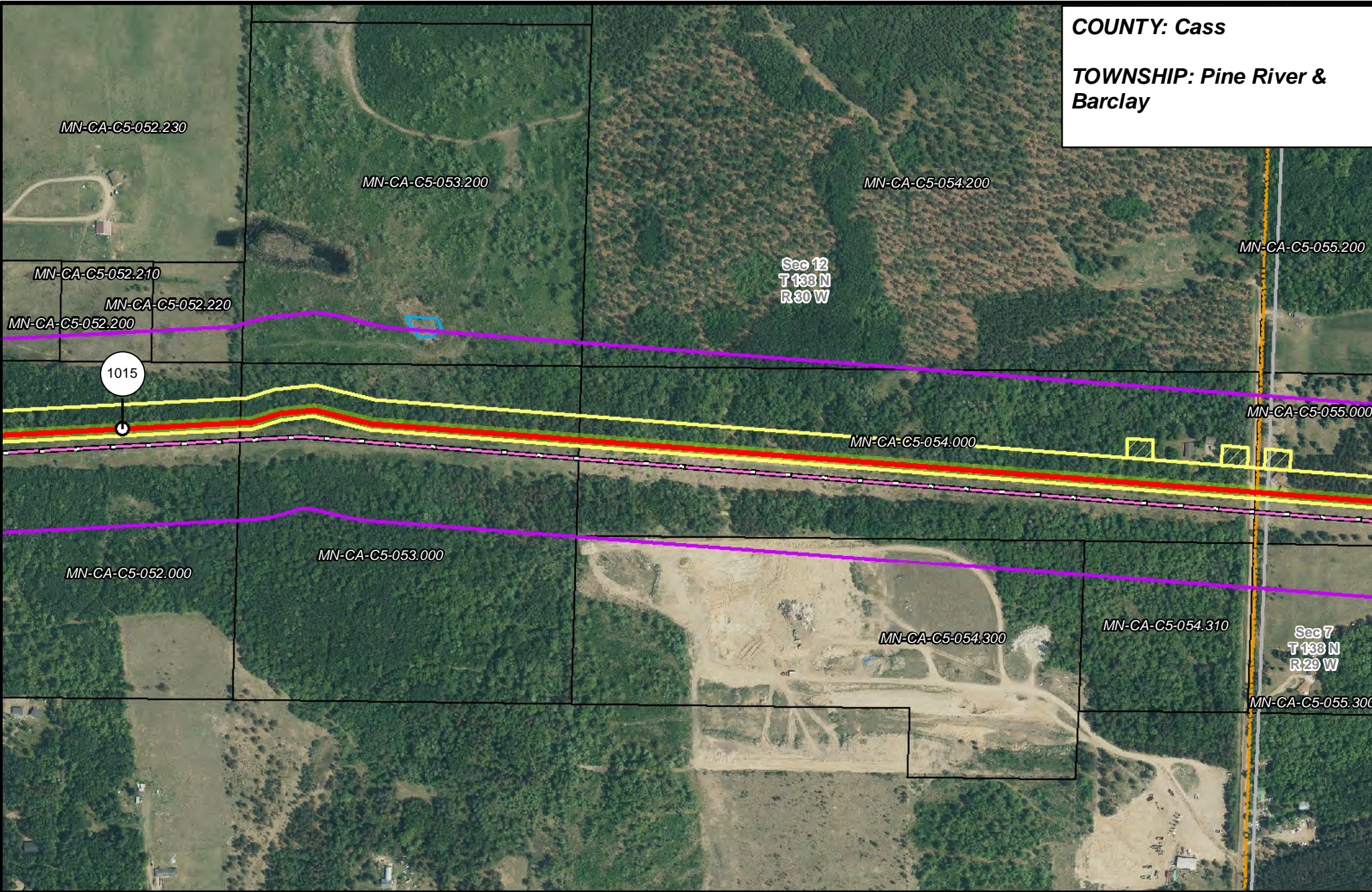
- |                       |                                |                                |                        |
|-----------------------|--------------------------------|--------------------------------|------------------------|
| PUC Designated Route  | Mile Post                      | Surveyed Waterbodies           | Tract Boundary         |
| ROW                   | Temporary Workspace            | ESA                            | MN Section Boundary    |
| Line 3R Pipeline      | Additional Temporary Workspace | Surveyed Wetlands              | Township/City Boundary |
| Valve Location        | Existing Enbridge Pipelines    | NWI Wetlands                   | County Boundary        |
| Enbridge Pump Station | Existing Electric Transmission | Existing Third Party Pipelines |                        |



**LINE 3 REPLACEMENT PIPELINE ROUTE**

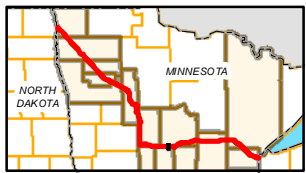
DRAWN: MLB CHECKED: --  
 DATE: August 31, 2018 SCALE: 1:5,000  
 Map 262 of 378

**COUNTY:** Cass  
**TOWNSHIP:** Pine River & Barclay

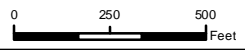


Sec 12  
 T 133 N  
 R 30 W

Sec 7  
 T 133 N  
 R 29 W



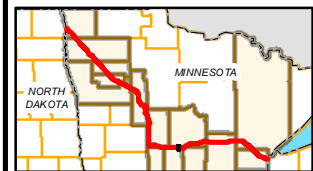
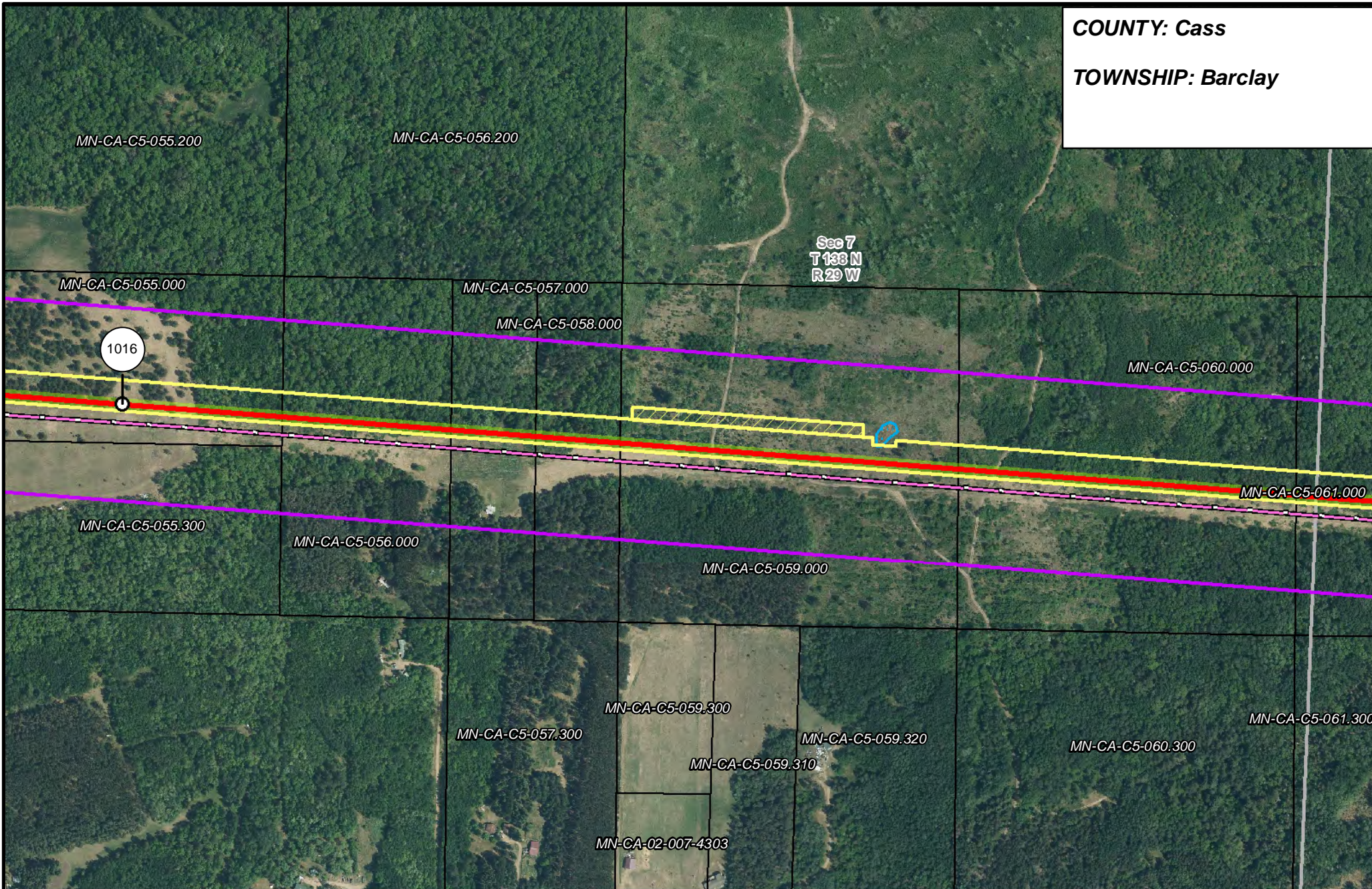
- |                       |                                |                      |                        |
|-----------------------|--------------------------------|----------------------|------------------------|
| PUC Designated Route  | Mile Post                      | Surveyed Waterbodies | Tract Boundary         |
| ROW                   | Temporary Workspace            | ESA                  | MN Section Boundary    |
| Line 3R Pipeline      | Additional Temporary Workspace | Surveyed Wetlands    | Township/City Boundary |
| Valve Location        | Existing Enbridge Pipelines    | NWI Wetlands         | County Boundary        |
| Enbridge Pump Station | Existing Electric Transmission |                      |                        |
|                       | Existing Third Party Pipelines |                      |                        |



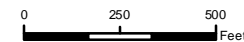
**LINE 3 REPLACEMENT PIPELINE ROUTE**

DRAWN: MLB CHECKED: --  
 DATE: August 31, 2018 SCALE: 1:5,000  
 Map 263 of 378

**COUNTY: Cass**  
**TOWNSHIP: Barclay**



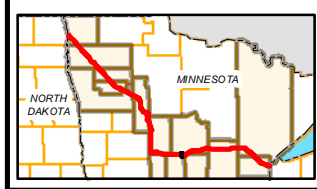
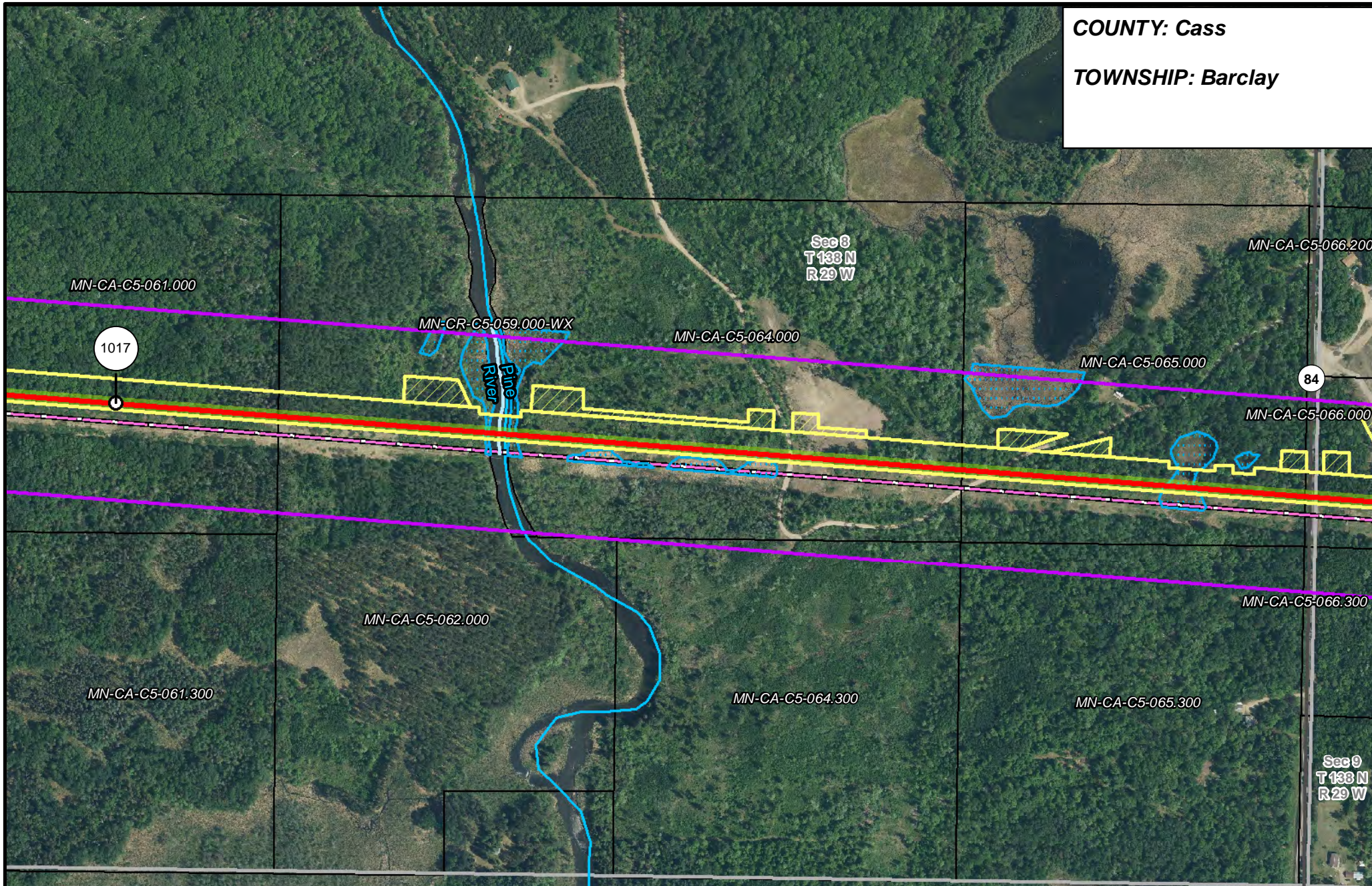
- |                       |                                |                      |                        |
|-----------------------|--------------------------------|----------------------|------------------------|
| PUC Designated Route  | Mile Post                      | Surveyed Waterbodies | Tract Boundary         |
| ROW                   | Temporary Workspace            | ESA                  | MN Section Boundary    |
| Line 3R Pipeline      | Additional Temporary Workspace | Surveyed Wetlands    | Township/City Boundary |
| Valve Location        | Existing Enbridge Pipelines    | NWI Wetlands         | County Boundary        |
| Enbridge Pump Station | Existing Electric Transmission |                      |                        |
|                       | Existing Third Party Pipelines |                      |                        |



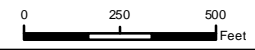
**LINE 3 REPLACEMENT PIPELINE ROUTE**

DRAWN: MLB CHECKED: --  
 DATE: August 31, 2018 SCALE: 1:5,000  
 Map 264 of 378

**COUNTY: Cass**  
**TOWNSHIP: Barclay**



- |                       |                                |                      |                        |
|-----------------------|--------------------------------|----------------------|------------------------|
| PUC Designated Route  | Mile Post                      | Surveyed Waterbodies | Tract Boundary         |
| ROW                   | Temporary Workspace            | ESA                  | MN Section Boundary    |
| Line 3R Pipeline      | Additional Temporary Workspace | Surveyed Wetlands    | Township/City Boundary |
| Valve Location        | Existing Enbridge Pipelines    | NWI Wetlands         | County Boundary        |
| Enbridge Pump Station | Existing Electric Transmission |                      |                        |
|                       | Existing Third Party Pipelines |                      |                        |



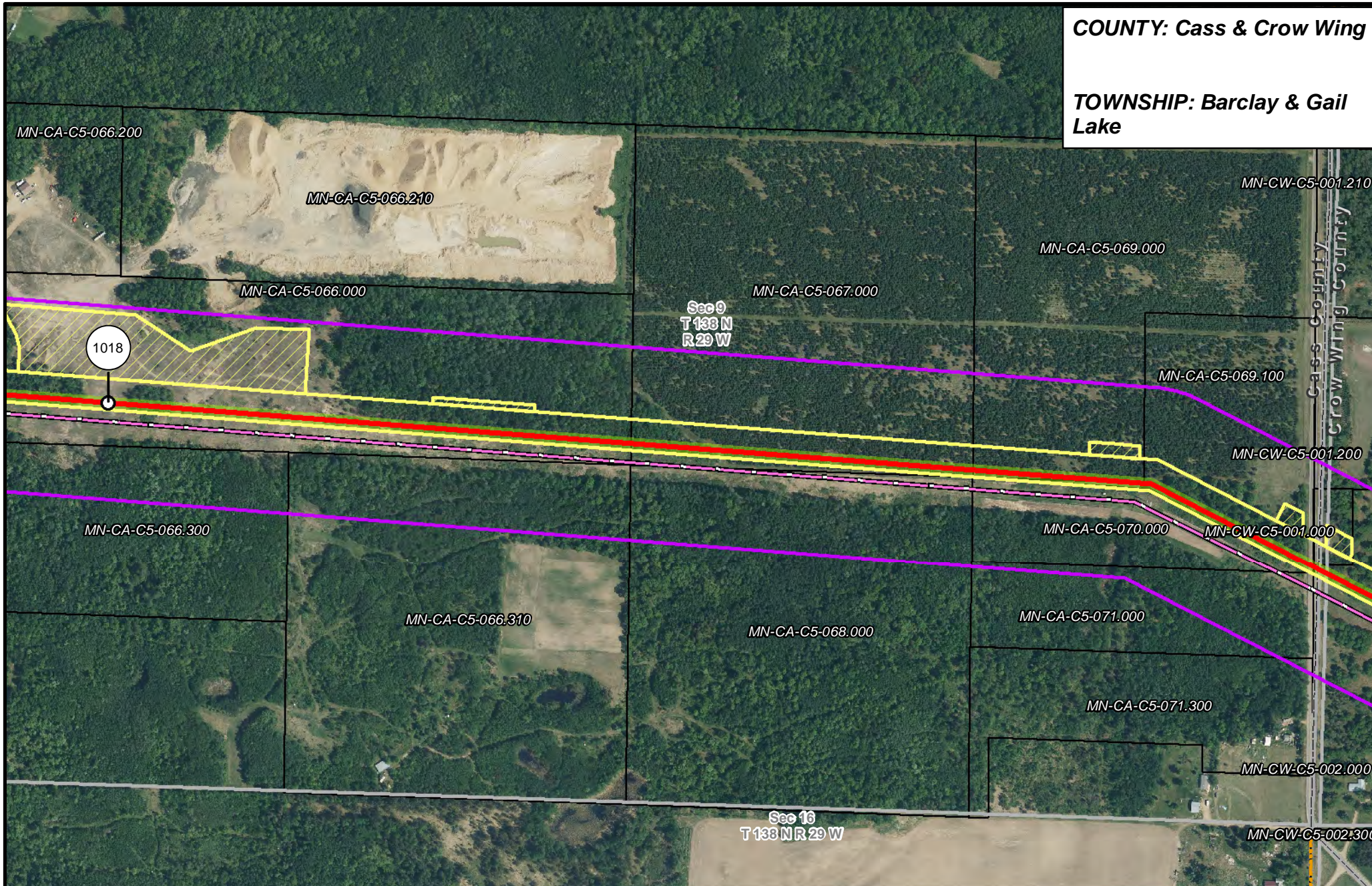
**LINE 3 REPLACEMENT PIPELINE ROUTE**

DRAWN: MLB      CHECKED: ---  
 DATE: August 31, 2018      SCALE: 1:5,000

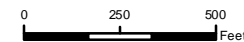
Map 265 of 378

COUNTY: Cass & Crow Wing

TOWNSHIP: Barclay & Gail Lake



- |                                |                                |                      |                        |
|--------------------------------|--------------------------------|----------------------|------------------------|
| PUC Designated Route           | Mile Post                      | Surveyed Waterbodies | Tract Boundary         |
| ROW                            | Temporary Workspace            | ESA                  | MN Section Boundary    |
| Line 3R Pipeline               | Additional Temporary Workspace | Surveyed Wetlands    | Township/City Boundary |
| Valve Location                 | Existing Enbridge Pipelines    | NWI Wetlands         | County Boundary        |
| Enbridge Pump Station          | Existing Electric Transmission |                      |                        |
| Existing Third Party Pipelines |                                |                      |                        |



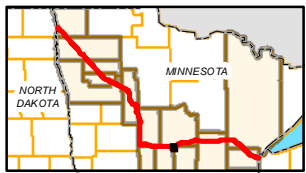
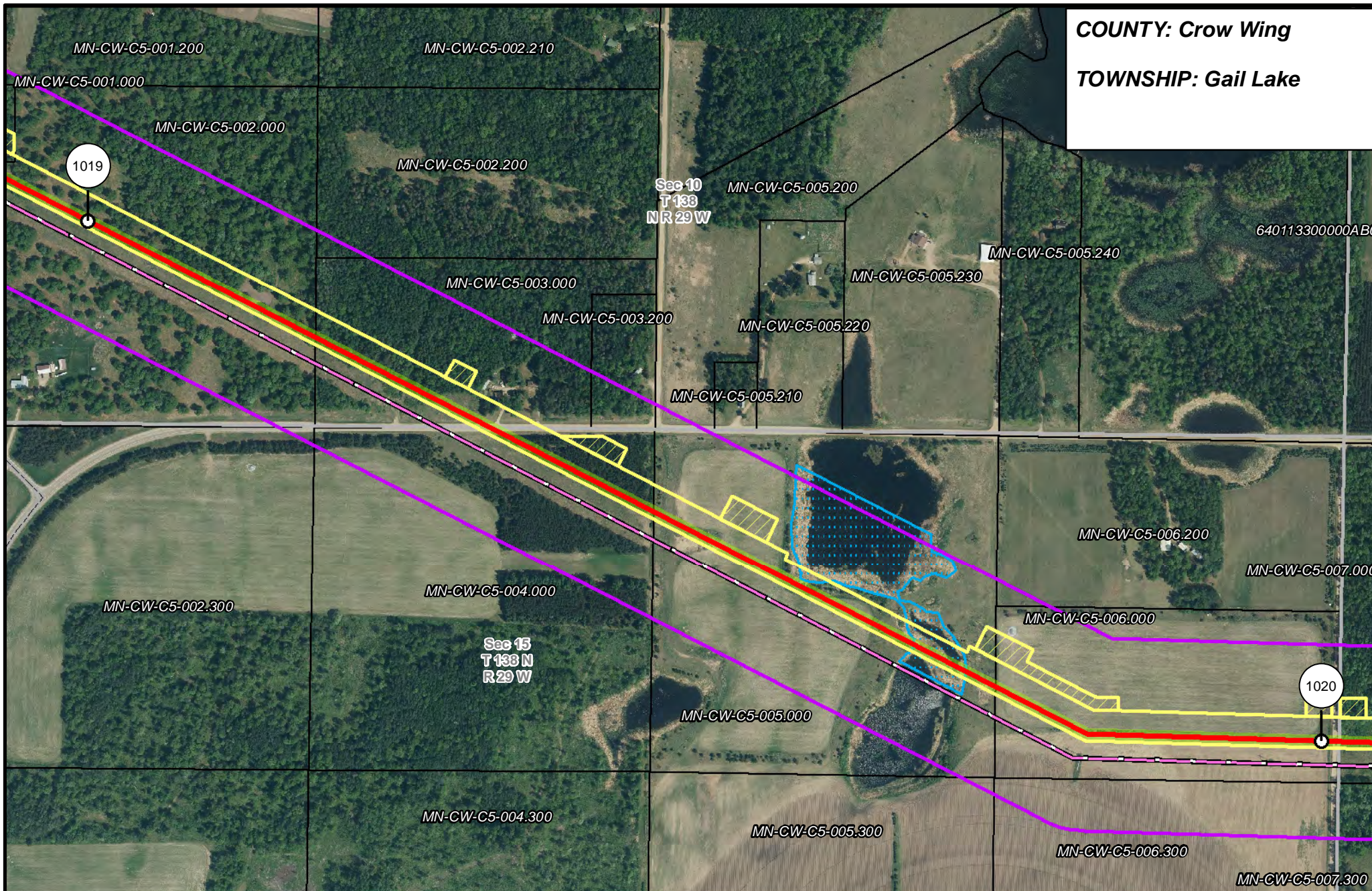
### LINE 3 REPLACEMENT PIPELINE ROUTE

DRAWN: MLB CHECKED: --  
DATE: August 31, 2018 SCALE: 1:5,000  
Map 266 of 378

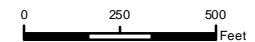


COUNTY: Crow Wing

TOWNSHIP: Gail Lake



- PUC Designated Route
- Mile Post
- Surveyed Waterbodies
- Tract Boundary
- ROW
- Temporary Workspace
- ESA
- MN Section Boundary
- Line 3R Pipeline
- Additional Temporary Workspace
- Surveyed Wetlands
- Township/City Boundary
- Valve Location
- Existing Enbridge Pipelines
- NWI Wetlands
- County Boundary
- Enbridge Pump Station
- Existing Electric Transmission
- Existing Third Party Pipelines



**LINE 3 REPLACEMENT PIPELINE ROUTE**

DRAWN: MLB      CHECKED: ---  
 DATE: August 31, 2018      SCALE: 1:5,000  
 Map 267 of 378

COUNTY: Crow Wing

TOWNSHIP: Gail Lake

640113300000AB0

Sec 11  
T 133  
NR 29 W

MN-CW-C5-010.100

MN-CW-C5-011.210

MN-CW-C5-006.200

MN-CW-C5-010.210

MN-CW-C5-011.200

MN-CW-C5-010.200

MN-CW-C5-008.000

MN-CW-C5-008.000-A

MN-CW-C5-007.000

MN-CW-C5-006.000

MN-CW-C5-009.000

MN-CW-C5-010.000

MN-CW-C5-011.000

1021

MN-CW-C5-012.000

MN-CW-C5-006.300

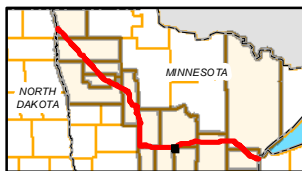
Sec 14  
T 133 N  
R 29 W

MN-CW-C5-007.300

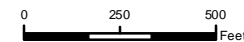
MN-CW-C5-010.300

MN-CW-C5-011.300

MN-CW-C5-012.300



- |                       |                                |                      |                        |
|-----------------------|--------------------------------|----------------------|------------------------|
| PUC Designated Route  | Mile Post                      | Surveyed Waterbodies | Tract Boundary         |
| ROW                   | Temporary Workspace            | ESA                  | MN Section Boundary    |
| Line 3R Pipeline      | Additional Temporary Workspace | Surveyed Wetlands    | Township/City Boundary |
| Valve Location        | Existing Enbridge Pipelines    | NWI Wetlands         | County Boundary        |
| Enbridge Pump Station | Existing Electric Transmission |                      |                        |
|                       | Existing Third Party Pipelines |                      |                        |

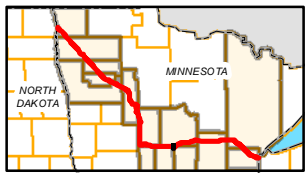
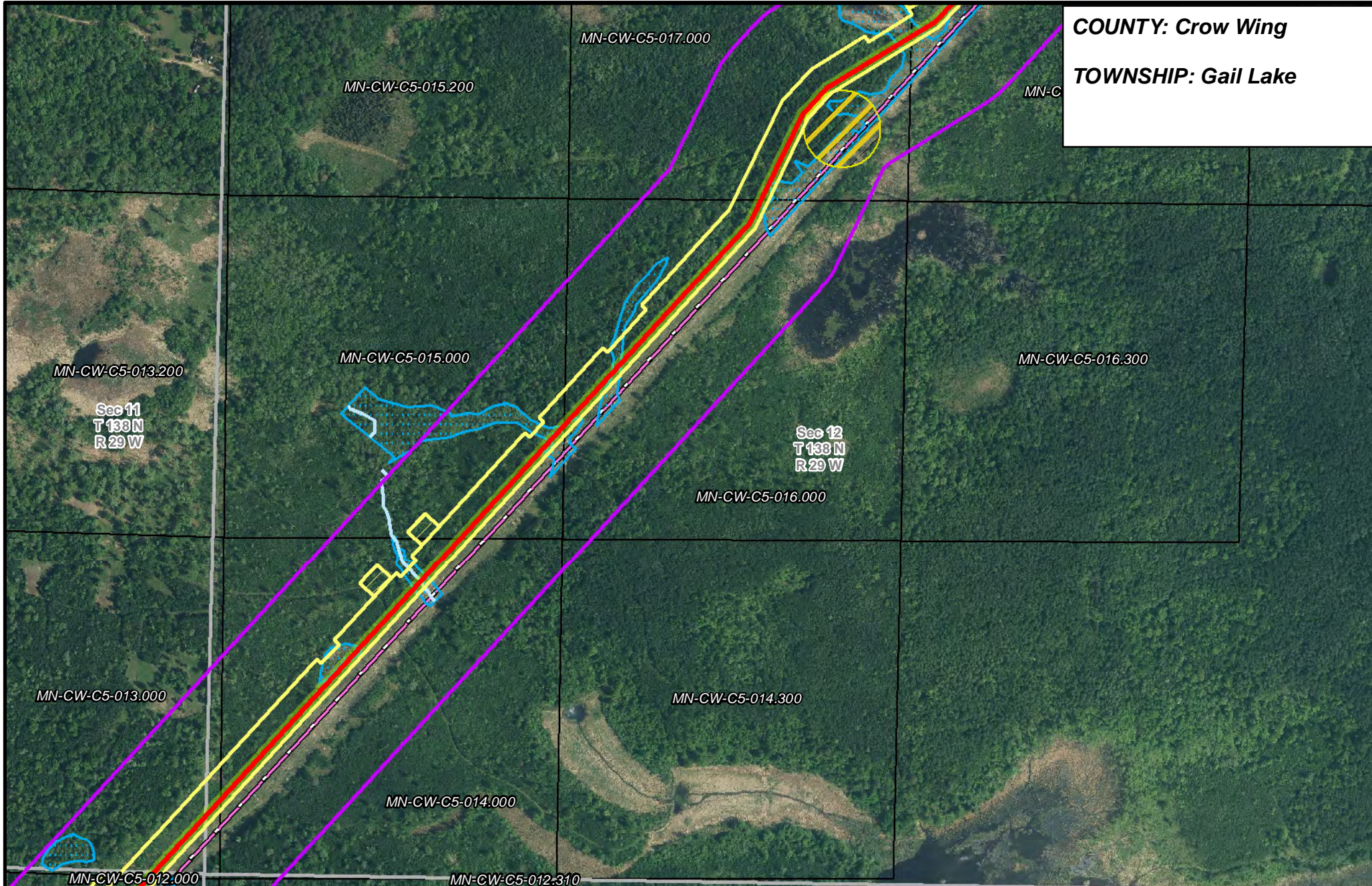


### LINE 3 REPLACEMENT PIPELINE ROUTE

DRAWN: MLB CHECKED: --  
DATE: August 31, 2018 SCALE: 1:5,000  
Map 268 of 378

COUNTY: Crow Wing

TOWNSHIP: Gail Lake



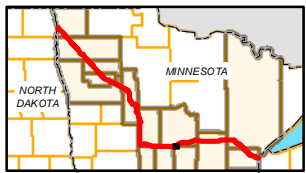
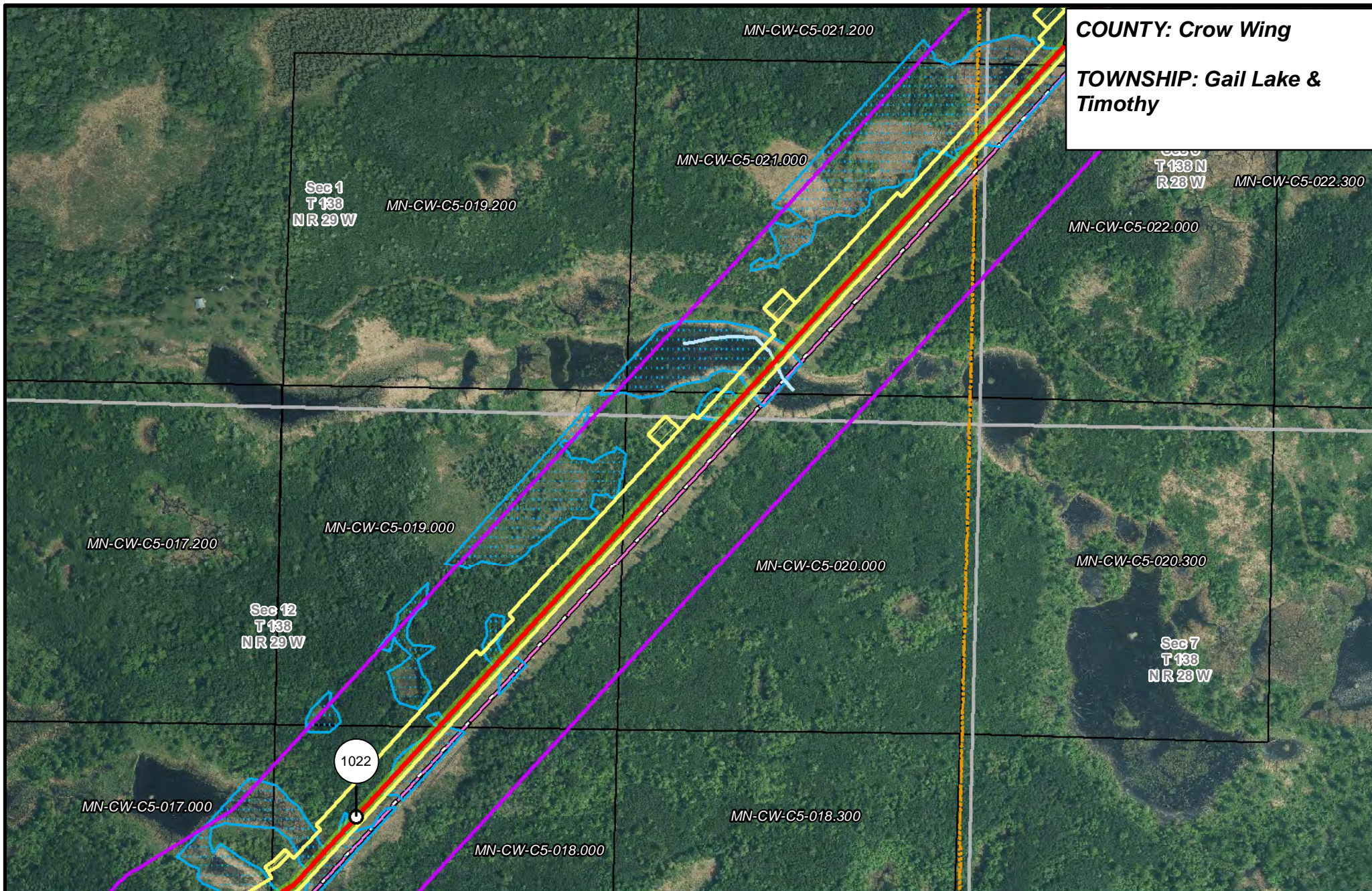
- PUC Designated Route
- ROW
- Line 3R Pipeline
- Valve Location
- Enbridge Pump Station
- Mile Post
- Temporary Workspace
- Additional Temporary Workspace
- Existing Enbridge Pipelines
- Existing Electric Transmission
- Existing Third Party Pipelines
- Surveyed Waterbodies
- ESA
- Surveyed Wetlands
- NWI Wetlands
- Tract Boundary
- MN Section Boundary
- Township/City Boundary
- County Boundary

**LINE 3 REPLACEMENT PIPELINE ROUTE**

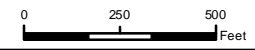
DRAWN: MLB      CHECKED: --  
DATE: August 31, 2018      SCALE: 1:5,000

Map 269 of 378

**COUNTY: Crow Wing**  
**TOWNSHIP: Gail Lake & Timothy**



- |                       |                                |                      |                        |
|-----------------------|--------------------------------|----------------------|------------------------|
| PUC Designated Route  | Mile Post                      | Surveyed Waterbodies | Tract Boundary         |
| ROW                   | Temporary Workspace            | ESA                  | MN Section Boundary    |
| Line 3R Pipeline      | Additional Temporary Workspace | Surveyed Wetlands    | Township/City Boundary |
| Valve Location        | Existing Enbridge Pipelines    | NWI Wetlands         | County Boundary        |
| Enbridge Pump Station | Existing Electric Transmission |                      |                        |
|                       | Existing Third Party Pipelines |                      |                        |



**LINE 3 REPLACEMENT PIPELINE ROUTE**

DRAWN: MLB CHECKED: --  
 DATE: August 31, 2018 SCALE: 1:5,000  
 Map 270 of 378