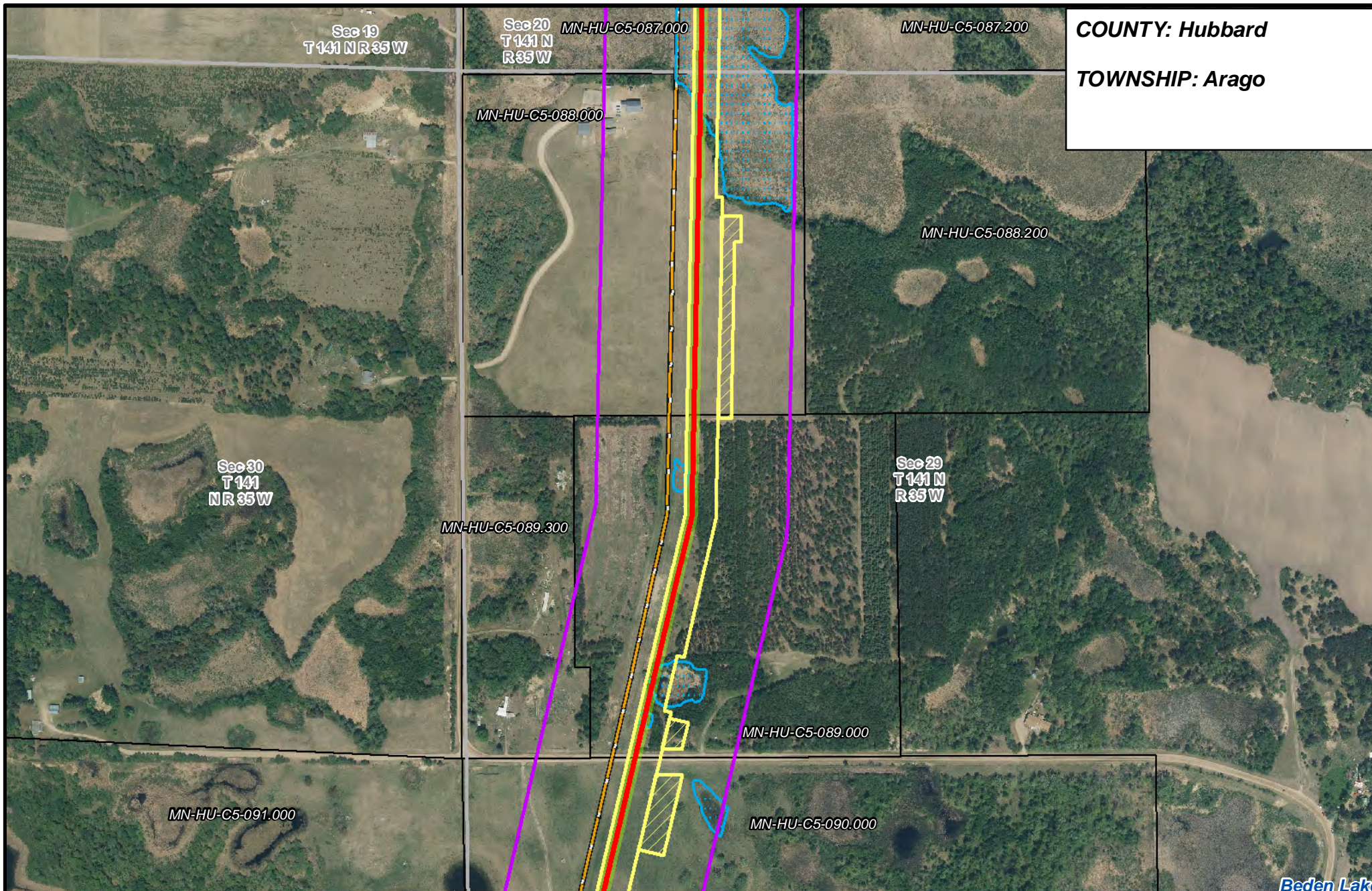
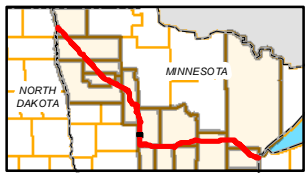


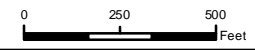
**COUNTY: Hubbard**  
**TOWNSHIP: Arago**



*Beden Lake*



- |                       |                                |                      |                        |
|-----------------------|--------------------------------|----------------------|------------------------|
| PUC Designated Route  | Mile Post                      | Surveyed Waterbodies | Tract Boundary         |
| ROW                   | Temporary Workspace            | ESA                  | MN Section Boundary    |
| Line 3R Pipeline      | Additional Temporary Workspace | Surveyed Wetlands    | Township/City Boundary |
| Valve Location        | Existing Enbridge Pipelines    | NWI Wetlands         | County Boundary        |
| Enbridge Pump Station | Existing Electric Transmission |                      |                        |
|                       | Existing Third Party Pipelines |                      |                        |



**LINE 3 REPLACEMENT  
PIPELINE ROUTE**

DRAWN: *MLB* CHECKED: *---*  
DATE: August 31, 2018 SCALE: 1:5,000  
Map 206 of 378



Sec 30  
T141 N  
R35 W

COUNTY: Hubbard

TOWNSHIP: Arago

MN-HU-C5-091.000

MN-HU-C5-090.000

Sec 29  
T141  
NR 35 W

966

Sec 31  
T141 N  
R35 W

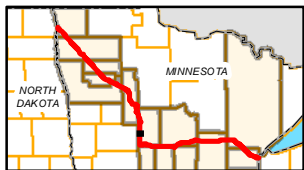
MN-HU-C5-093.000

ROW34061

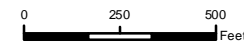
Sloan  
Lake

MN-HU-C5-092.000

Sec 32  
T141 N  
R35 W



- PUC Designated Route
- ROW
- Line 3R Pipeline
- Valve Location
- Enbridge Pump Station
- Mile Post
- Temporary Workspace
- Additional Temporary Workspace
- Existing Enbridge Pipelines
- Existing Electric Transmission
- Existing Third Party Pipelines
- Surveyed Waterbodies
- ESA
- Surveyed Wetlands
- NWI Wetlands
- Tract Boundary
- MN Section Boundary
- Township/City Boundary
- County Boundary

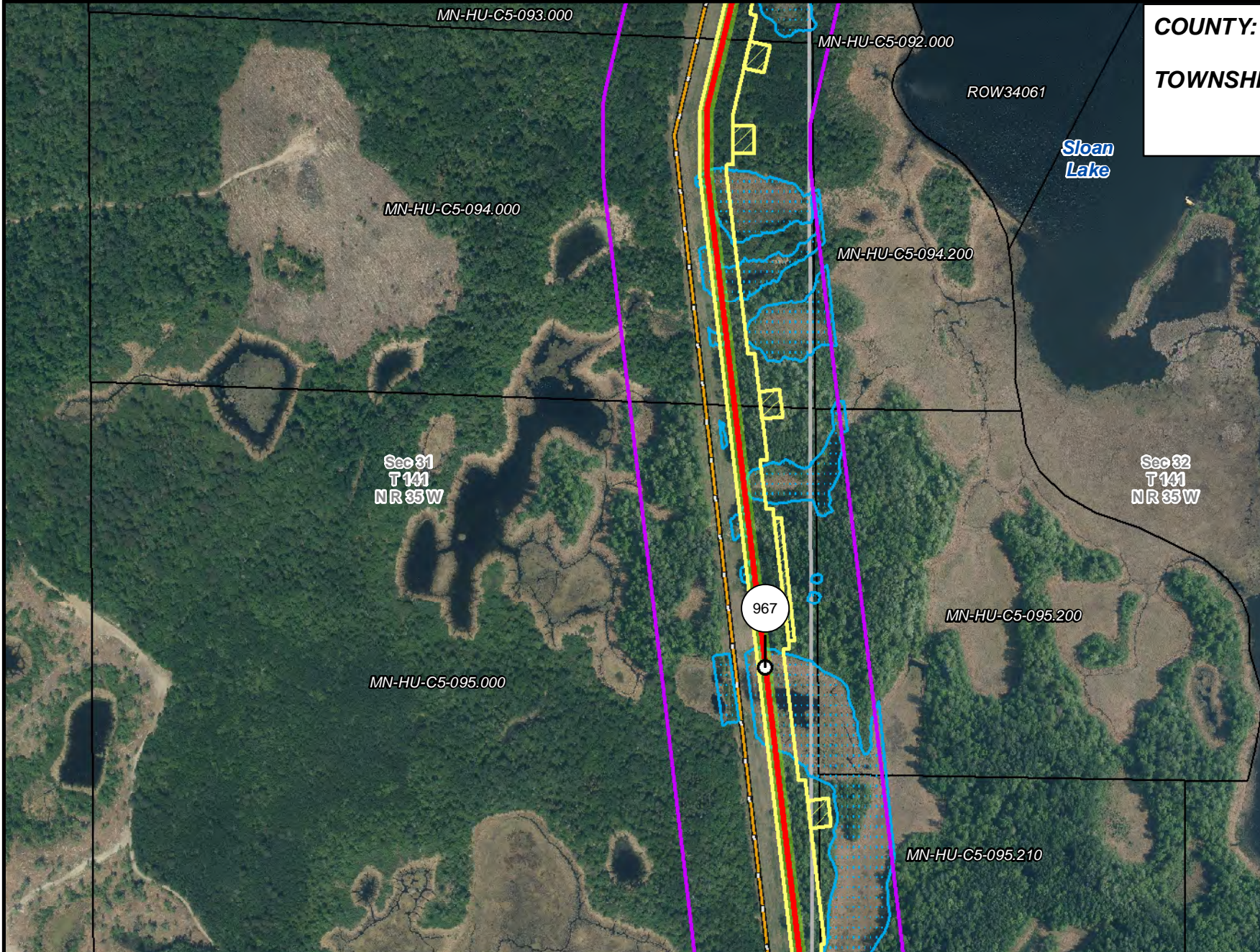


### LINE 3 REPLACEMENT PIPELINE ROUTE

DRAWN: MLB CHECKED: --  
DATE: August 31, 2018 SCALE: 1:5,000  
Map 207 of 378



**COUNTY: Hubbard**  
**TOWNSHIP: Arago**



MN-HU-C5-093.000

MN-HU-C5-092.000

ROW34061

Sloan Lake

MN-HU-C5-094.000

MN-HU-C5-094.200

Sec 31  
T 141  
NR 35W

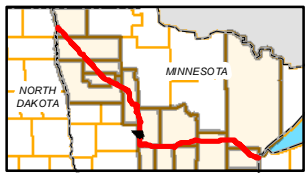
Sec 32  
T 141  
NR 35W

MN-HU-C5-095.000

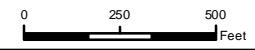
MN-HU-C5-095.200

967

MN-HU-C5-095.210



- |                       |                                |                      |                        |
|-----------------------|--------------------------------|----------------------|------------------------|
| PUC Designated Route  | Mile Post                      | Surveyed Waterbodies | Tract Boundary         |
| ROW                   | Temporary Workspace            | ESA                  | MN Section Boundary    |
| Line 3R Pipeline      | Additional Temporary Workspace | Surveyed Wetlands    | Township/City Boundary |
| Valve Location        | Existing Enbridge Pipelines    | NWI Wetlands         | County Boundary        |
| Enbridge Pump Station | Existing Electric Transmission |                      |                        |
|                       | Existing Third Party Pipelines |                      |                        |



**LINE 3 REPLACEMENT PIPELINE ROUTE**

DRAWN: MLB CHECKED: --  
 DATE: August 31, 2018 SCALE: 1:5,000  
 Map 208 of 378



COUNTY: Hubbard

TOWNSHIP: Arago & Todd

Sec 31  
T 141 N  
R 35 W

MN-HU-C5-095.000

MN-HU-C5-095.210

Sec 32  
T 141  
N R 35 W

MN-HU-C5-096.000

MN-HU-C5-098.000

27.05.00720

Sec 6  
T 140 N  
R 35 W

MN-HU-C5-097.000

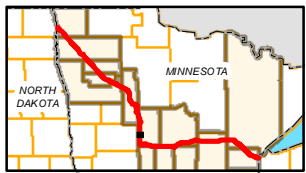
Sec 5  
T 140 N  
R 35 W

MN-HU-C5-099.300

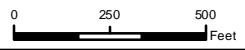
MN-HU-C5-099.000

MN-HU-C5-099.200

Portage  
Lake



- PUC Designated Route
- ROW
- Line 3R Pipeline
- Valve Location
- Enbridge Pump Station
- Mile Post
- Temporary Workspace
- Additional Temporary Workspace
- Existing Enbridge Pipelines
- Existing Electric Transmission
- Existing Third Party Pipelines
- Surveyed Waterbodies
- ESA
- Surveyed Wetlands
- NWI Wetlands
- Tract Boundary
- MN Section Boundary
- Township/City Boundary
- County Boundary



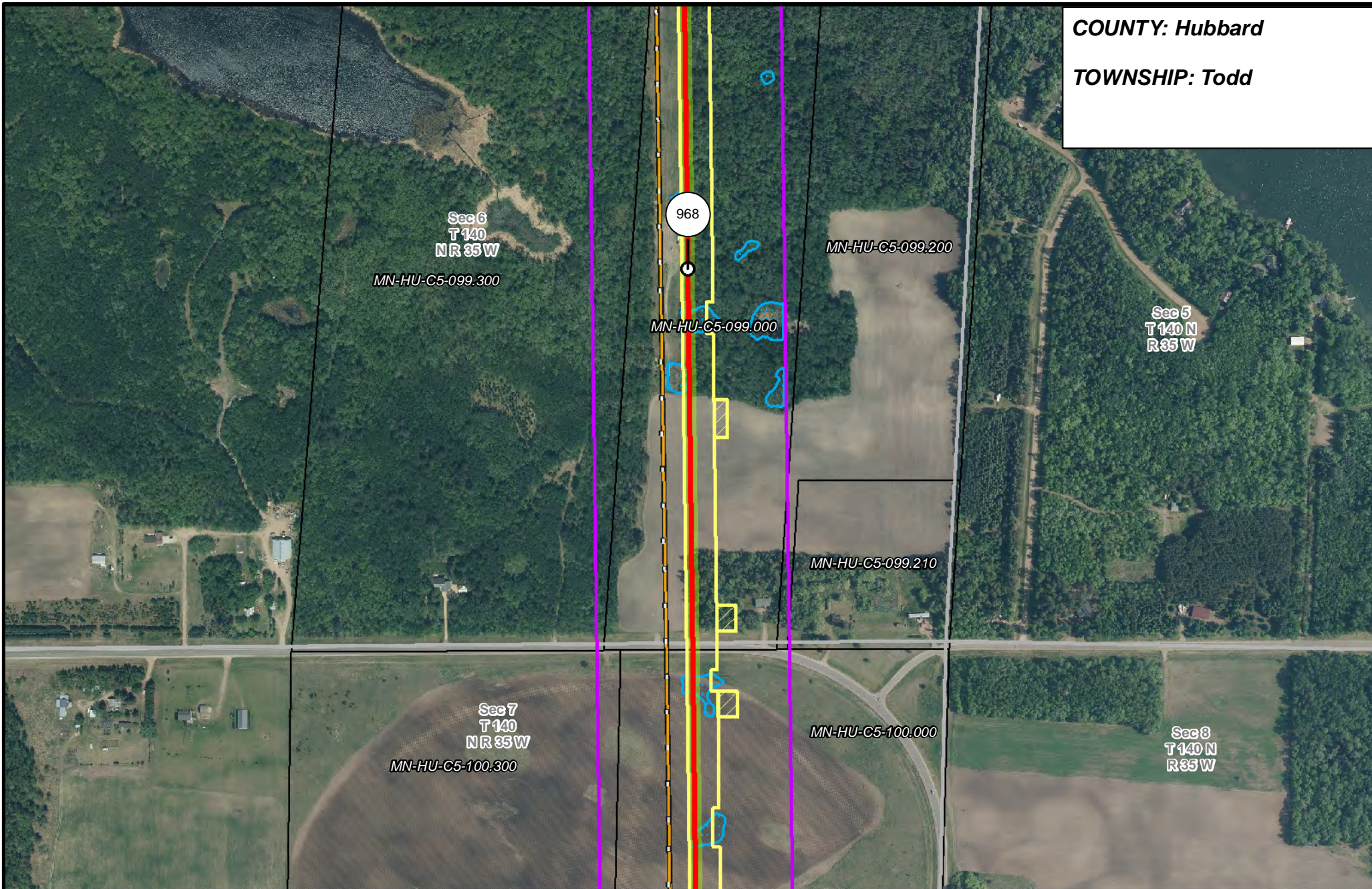
### LINE 3 REPLACEMENT PIPELINE ROUTE

DRAWN: MLB      CHECKED: --  
 DATE: August 31, 2018      SCALE: 1:5,000  
 Map 209 of 378

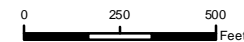


COUNTY: Hubbard

TOWNSHIP: Todd



- |                       |                                |                      |                        |
|-----------------------|--------------------------------|----------------------|------------------------|
| PUC Designated Route  | Mile Post                      | Surveyed Waterbodies | Tract Boundary         |
| ROW                   | Temporary Workspace            | ESA                  | MN Section Boundary    |
| Line 3R Pipeline      | Additional Temporary Workspace | Surveyed Wetlands    | Township/City Boundary |
| Valve Location        | Existing Enbridge Pipelines    | NWI Wetlands         | County Boundary        |
| Enbridge Pump Station | Existing Electric Transmission |                      |                        |
|                       | Existing Third Party Pipelines |                      |                        |



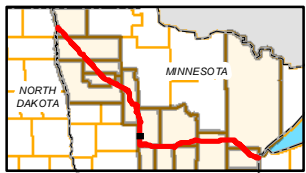
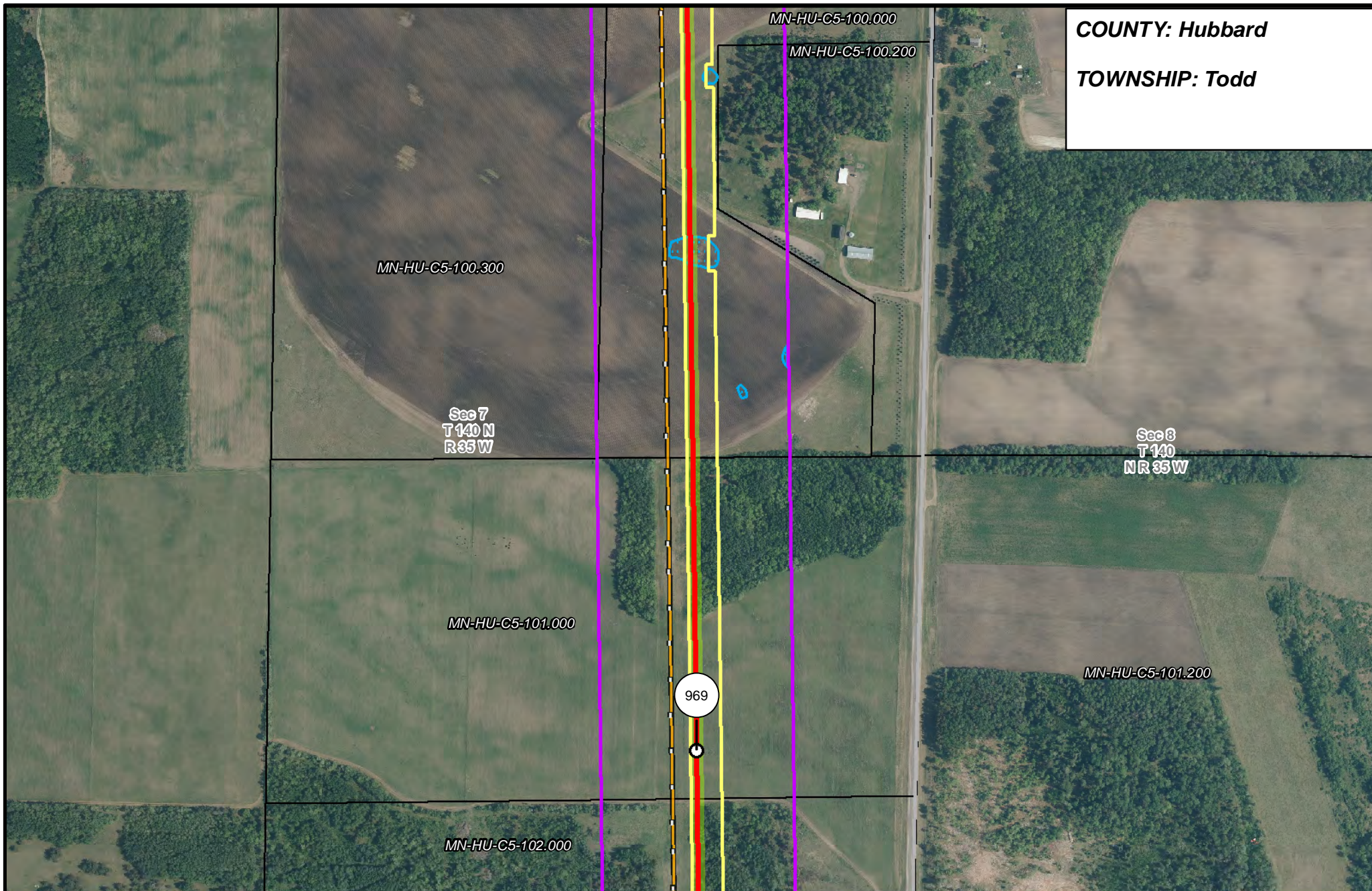
**LINE 3 REPLACEMENT PIPELINE ROUTE**

DRAWN: MLB      CHECKED: --  
DATE: August 31, 2018      SCALE: 1:5,000

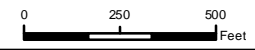
Map 210 of 378



**COUNTY: Hubbard**  
**TOWNSHIP: Todd**



- |                       |                                |                                |                        |
|-----------------------|--------------------------------|--------------------------------|------------------------|
| PUC Designated Route  | Mile Post                      | Surveyed Waterbodies           | Tract Boundary         |
| ROW                   | Temporary Workspace            | ESA                            | MN Section Boundary    |
| Line 3R Pipeline      | Additional Temporary Workspace | Surveyed Wetlands              | Township/City Boundary |
| Valve Location        | Existing Enbridge Pipelines    | NWI Wetlands                   | County Boundary        |
| Enbridge Pump Station | Existing Electric Transmission | Existing Third Party Pipelines |                        |



**LINE 3 REPLACEMENT PIPELINE ROUTE**

DRAWN: MLB CHECKED: --  
 DATE: August 31, 2018 SCALE: 1:5,000  
 Map 211 of 378



COUNTY: Hubbard

TOWNSHIP: Todd

Sec 7  
T140  
NR 35W MN-HU-C5-102.000

MN-HU-

MN-HU-C5-102.210

MN-HU-C5-102.200

MN-HU-C5-103.000

MN-HU-C5-27.13.00140

MN-HU-C5-103.200

MN-HU-C5-103.210

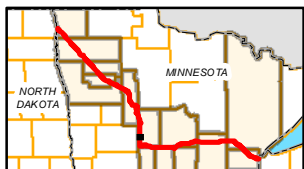
Sec 13  
T140  
NR 35W

Sec 17  
T140 N  
R 35 W

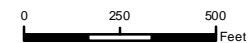
MN-HU-C5-104.000

MN-HU-C5-104.200

MN-HU-C5-105.000



- |                       |                                |                      |                        |
|-----------------------|--------------------------------|----------------------|------------------------|
| PUC Designated Route  | Mile Post                      | Surveyed Waterbodies | Tract Boundary         |
| ROW                   | Temporary Workspace            | ESA                  | MN Section Boundary    |
| Line 3R Pipeline      | Additional Temporary Workspace | Surveyed Wetlands    | Township/City Boundary |
| Valve Location        | Existing Enbridge Pipelines    | NWI Wetlands         | County Boundary        |
| Enbridge Pump Station | Existing Electric Transmission |                      |                        |
|                       | Existing Third Party Pipelines |                      |                        |



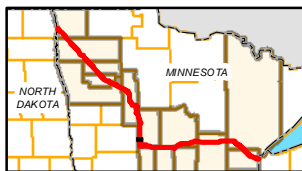
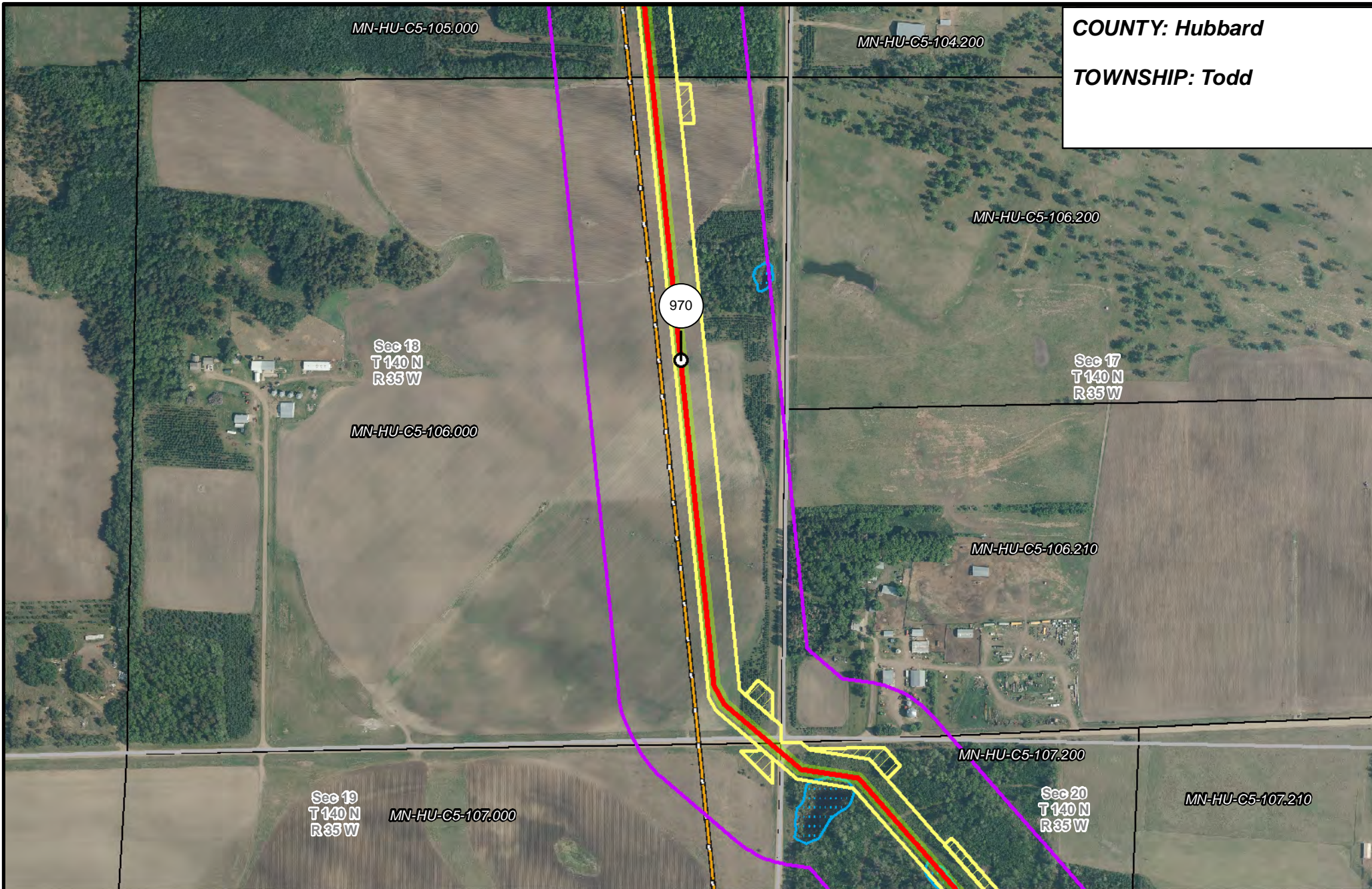
### LINE 3 REPLACEMENT PIPELINE ROUTE

DRAWN: MLB CHECKED: --  
DATE: August 31, 2018 SCALE: 1:5,000  
Map 212 of 378

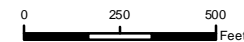


COUNTY: Hubbard

TOWNSHIP: Todd



- |                       |                                |                      |                        |
|-----------------------|--------------------------------|----------------------|------------------------|
| PUC Designated Route  | Mile Post                      | Surveyed Waterbodies | Tract Boundary         |
| ROW                   | Temporary Workspace            | ESA                  | MN Section Boundary    |
| Line 3R Pipeline      | Additional Temporary Workspace | Surveyed Wetlands    | Township/City Boundary |
| Valve Location        | Existing Enbridge Pipelines    | NWI Wetlands         | County Boundary        |
| Enbridge Pump Station | Existing Electric Transmission |                      |                        |
|                       | Existing Third Party Pipelines |                      |                        |



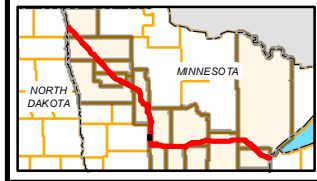
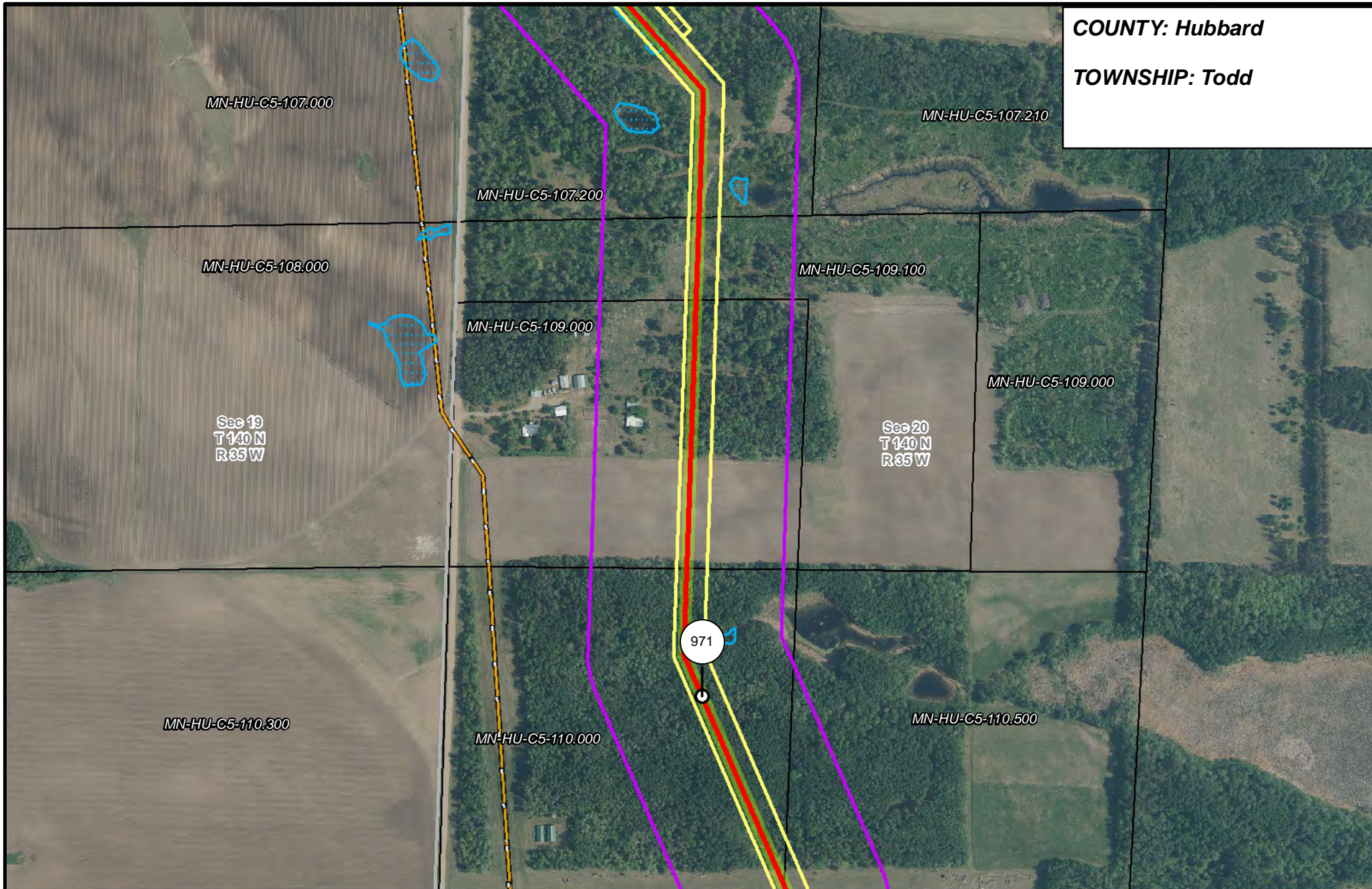
### LINE 3 REPLACEMENT PIPELINE ROUTE

DRAWN: MLB CHECKED: --  
DATE: August 31, 2018 SCALE: 1:5,000  
Map 213 of 378

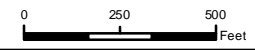


COUNTY: Hubbard

TOWNSHIP: Todd



- PUC Designated Route
- ROW
- Line 3R Pipeline
- Valve Location
- Enbridge Pump Station
- Mile Post
- Temporary Workspace
- Additional Temporary Workspace
- Existing Enbridge Pipelines
- Existing Electric Transmission
- Existing Third Party Pipelines
- Surveyed Waterbodies
- ESA
- Surveyed Wetlands
- NWI Wetlands
- Tract Boundary
- MN Section Boundary
- Township/City Boundary
- County Boundary



### LINE 3 REPLACEMENT PIPELINE ROUTE

DRAWN: MLB CHECKED: --  
DATE: August 31, 2018 SCALE: 1:5,000  
Map 214 of 378



COUNTY: Hubbard

TOWNSHIP: Todd

MN-HU-C5-110.300

Sec 19  
T 140 N  
R 35 W

MN-HU-C5-110.000

MN-HU-C5-110.500

MN-HU-C5-111.000

MN-HU-C5-110.510

Sec 20  
T 140  
NR 35 W

MN-HU-C5-112.000

34

MN-HU-C5-113.000-RX

MN-HU-C5-114.300






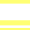











Sec 30  
T 140 N  
R 35 W

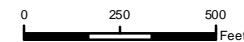
MN-HU-C5-114.000

MN-HU-C5-114.200

Sec 29  
T 140  
NR 35 W



-  PUC Designated Route
-  Line 3R Pipeline
-  Valve Location
-  Enbridge Pump Station
-  Mile Post
-  Temporary Workspace
-  Existing Enbridge Pipelines
-  Existing Electric Transmission
-  Existing Third Party Pipelines
-  Surveyed Waterbodies
-  ESA
-  Surveyed Wetlands
-  NWI Wetlands
-  Tract Boundary
-  MN Section Boundary
-  Township/City Boundary
-  County Boundary

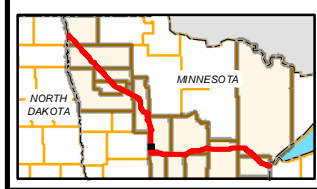
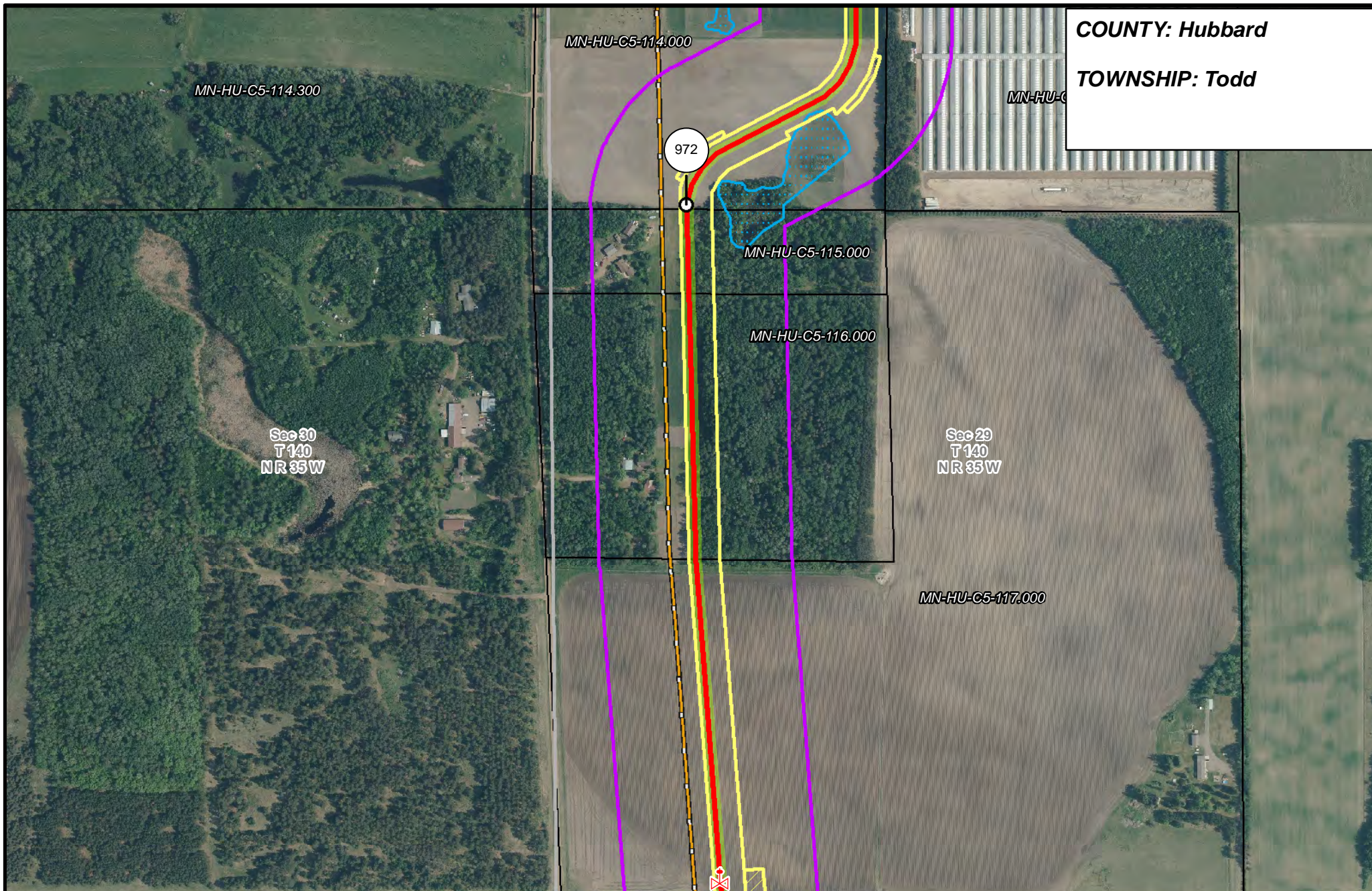


### LINE 3 REPLACEMENT PIPELINE ROUTE

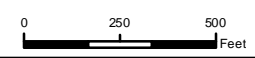
DRAWN: MLB      CHECKED: --  
 DATE: August 31, 2018      SCALE: 1:5,000  
 Map 215 of 378



**COUNTY: Hubbard**  
**TOWNSHIP: Todd**



- |                       |                                |                      |                        |
|-----------------------|--------------------------------|----------------------|------------------------|
| PUC Designated Route  | Mile Post                      | Surveyed Waterbodies | Tract Boundary         |
| ROW                   | Temporary Workspace            | ESA                  | MN Section Boundary    |
| Line 3R Pipeline      | Additional Temporary Workspace | Surveyed Wetlands    | Township/City Boundary |
| Valve Location        | Existing Enbridge Pipelines    | NWI Wetlands         | County Boundary        |
| Enbridge Pump Station | Existing Electric Transmission |                      |                        |
|                       | Existing Third Party Pipelines |                      |                        |

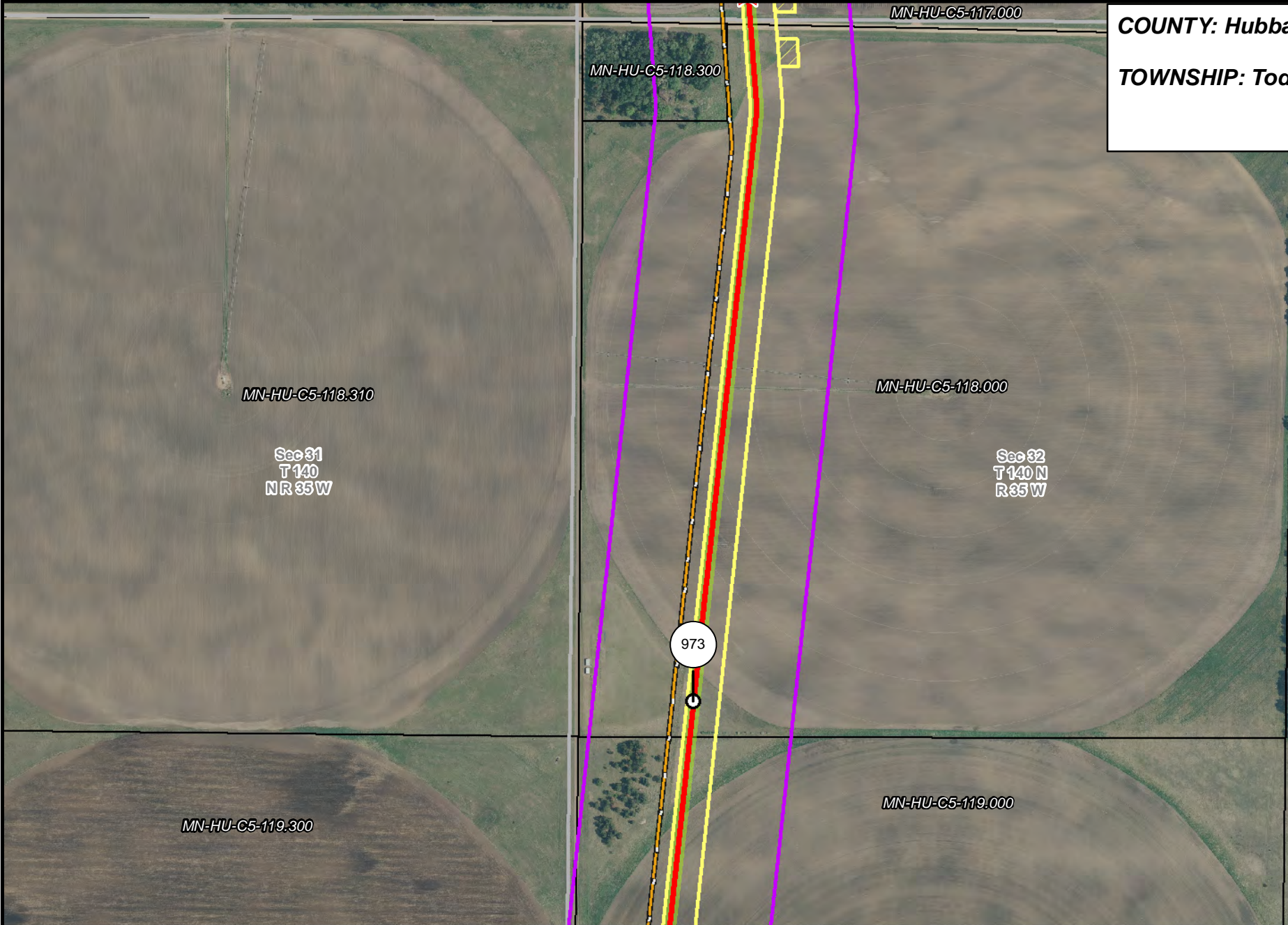


**LINE 3 REPLACEMENT PIPELINE ROUTE**

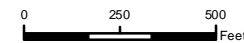
DRAWN: MLB CHECKED: --  
 DATE: August 31, 2018 SCALE: 1:5,000  
 Map 216 of 378



**COUNTY: Hubbard**  
**TOWNSHIP: Todd**



- |                       |                                |                      |                        |
|-----------------------|--------------------------------|----------------------|------------------------|
| PUC Designated Route  | Mile Post                      | Surveyed Waterbodies | Tract Boundary         |
| ROW                   | Temporary Workspace            | ESA                  | MN Section Boundary    |
| Line 3R Pipeline      | Additional Temporary Workspace | Surveyed Wetlands    | Township/City Boundary |
| Valve Location        | Existing Enbridge Pipelines    | NWI Wetlands         | County Boundary        |
| Enbridge Pump Station | Existing Electric Transmission |                      |                        |
|                       | Existing Third Party Pipelines |                      |                        |



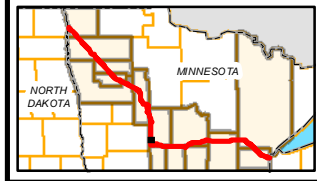
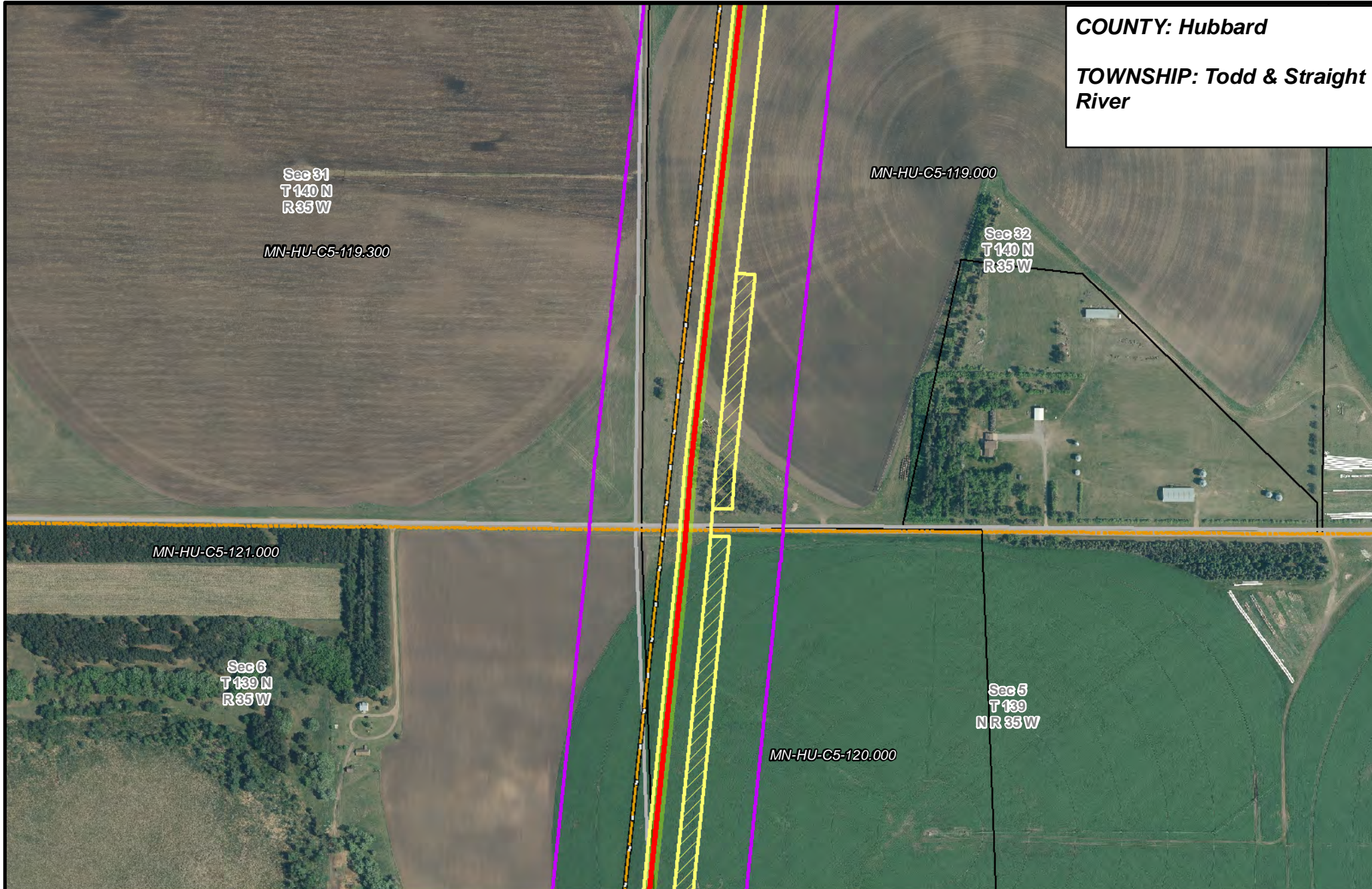
**LINE 3 REPLACEMENT PIPELINE ROUTE**

DRAWN: MLB      CHECKED: --  
 DATE: August 31, 2018      SCALE: 1:5,000

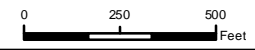
Map 217 of 378



**COUNTY:** Hubbard  
**TOWNSHIP:** Todd & Straight River



PUC Designated Route	Mile Post	Surveyed Waterbodies	Tract Boundary
ROW	Temporary Workspace	ESA	MN Section Boundary
Line 3R Pipeline	Additional Temporary Workspace	Surveyed Wetlands	Township/City Boundary
Valve Location	Existing Enbridge Pipelines	NWI Wetlands	County Boundary
Enbridge Pump Station	Existing Electric Transmission		
	Existing Third Party Pipelines		

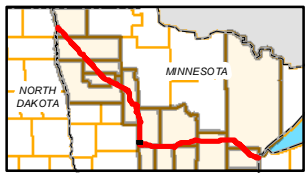
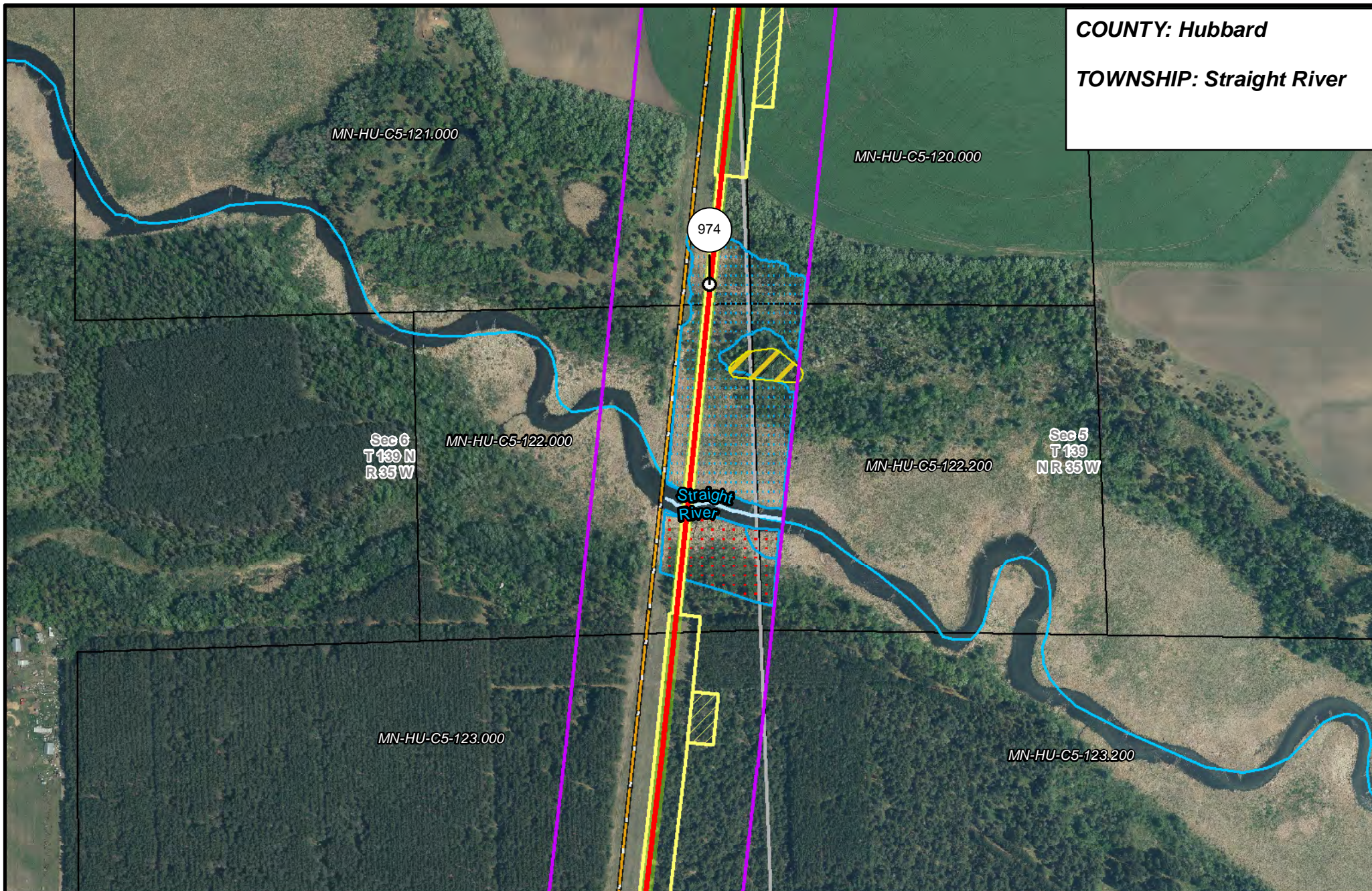


**LINE 3 REPLACEMENT PIPELINE ROUTE**

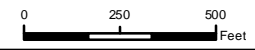
DRAWN: MLB CHECKED: --  
 DATE: August 31, 2018 SCALE: 1:5,000  
 Map 218 of 378



**COUNTY: Hubbard**  
**TOWNSHIP: Straight River**



- |                       |                                |                      |                        |
|-----------------------|--------------------------------|----------------------|------------------------|
| PUC Designated Route  | Mile Post                      | Surveyed Waterbodies | Tract Boundary         |
| ROW                   | Temporary Workspace            | ESA                  | MN Section Boundary    |
| Line 3R Pipeline      | Additional Temporary Workspace | Surveyed Wetlands    | Township/City Boundary |
| Valve Location        | Existing Enbridge Pipelines    | NWI Wetlands         | County Boundary        |
| Enbridge Pump Station | Existing Electric Transmission |                      |                        |
|                       | Existing Third Party Pipelines |                      |                        |

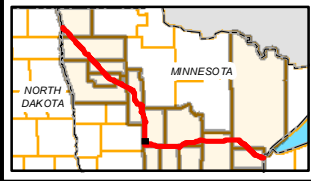
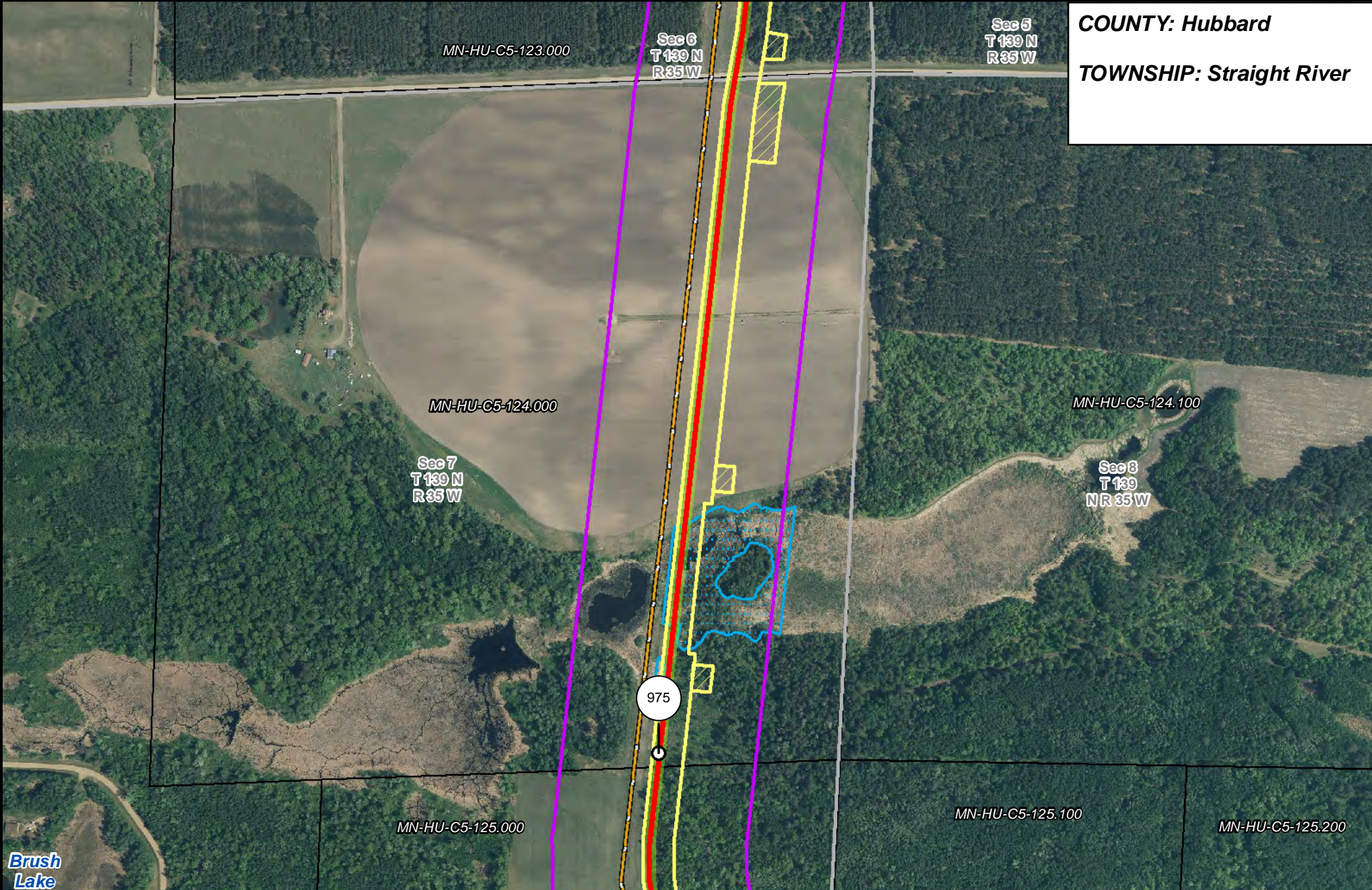


**LINE 3 REPLACEMENT  
PIPELINE ROUTE**

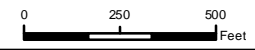
DRAWN: MLB CHECKED: --  
DATE: August 31, 2018 SCALE: 1:5,000  
Map 219 of 378



**COUNTY: Hubbard**  
**TOWNSHIP: Straight River**



- PUC Designated Route
- Mile Post
- Surveyed Waterbodies
- Tract Boundary
- ROW
- Temporary Workspace
- ESA
- MN Section Boundary
- Line 3R Pipeline
- Additional Temporary Workspace
- Surveyed Wetlands
- Township/City Boundary
- Valve Location
- Existing Enbridge Pipelines
- NWI Wetlands
- County Boundary
- Enbridge Pump Station
- Existing Electric Transmission
- Existing Third Party Pipelines

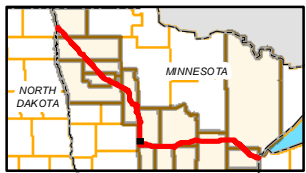
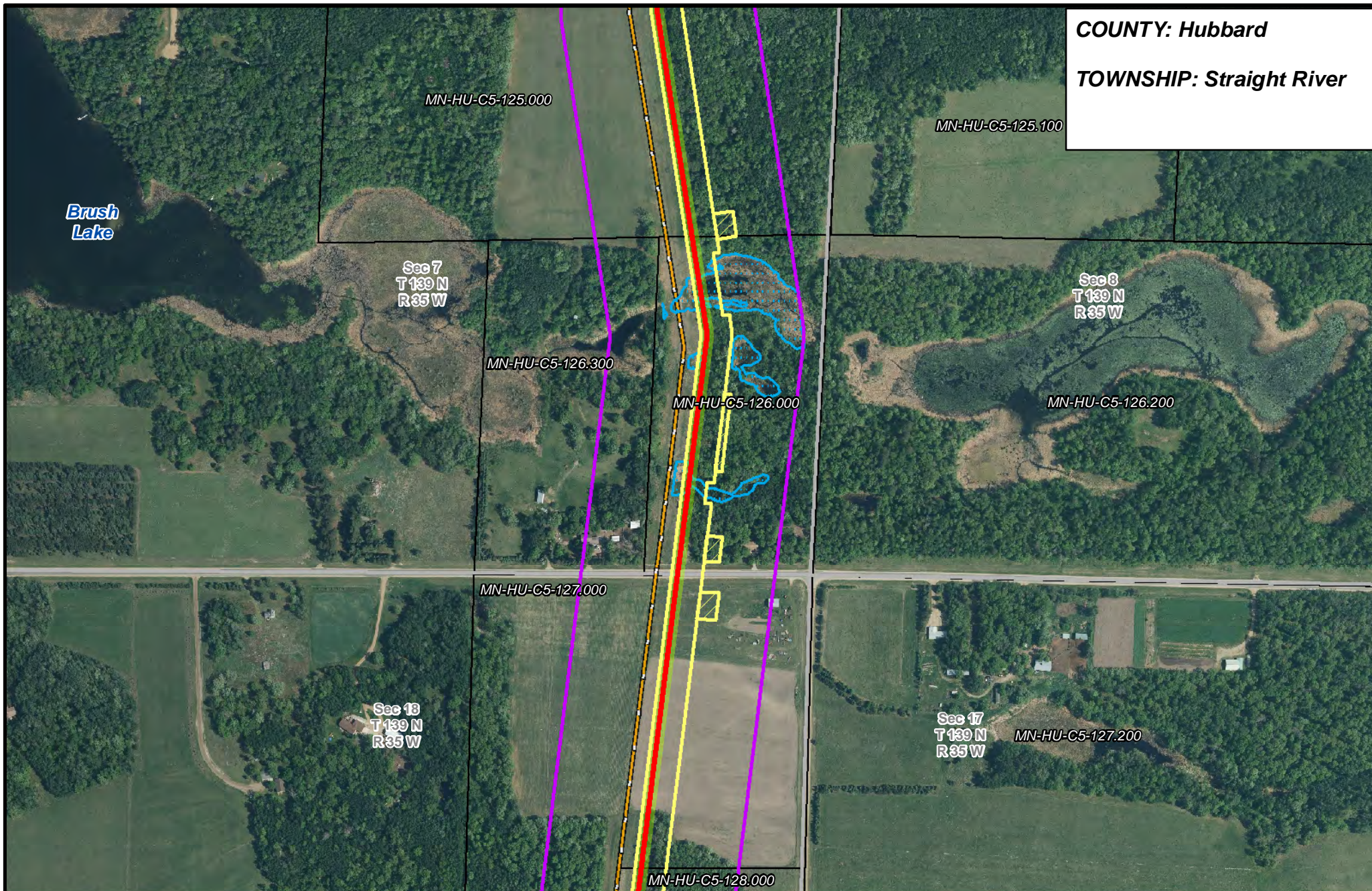


**LINE 3 REPLACEMENT PIPELINE ROUTE**

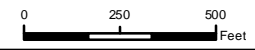
DRAWN: MLB CHECKED: --  
 DATE: August 31, 2018 SCALE: 1:5,000  
 Map 220 of 378



**COUNTY:** Hubbard  
**TOWNSHIP:** Straight River



- |                       |                                |                      |                        |
|-----------------------|--------------------------------|----------------------|------------------------|
| PUC Designated Route  | Mile Post                      | Surveyed Waterbodies | Tract Boundary         |
| ROW                   | Temporary Workspace            | ESA                  | MN Section Boundary    |
| Line 3R Pipeline      | Additional Temporary Workspace | Surveyed Wetlands    | Township/City Boundary |
| Valve Location        | Existing Enbridge Pipelines    | NWI Wetlands         | County Boundary        |
| Enbridge Pump Station | Existing Electric Transmission |                      |                        |
|                       | Existing Third Party Pipelines |                      |                        |

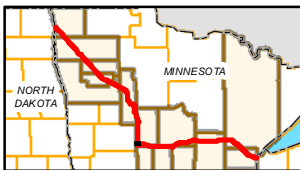
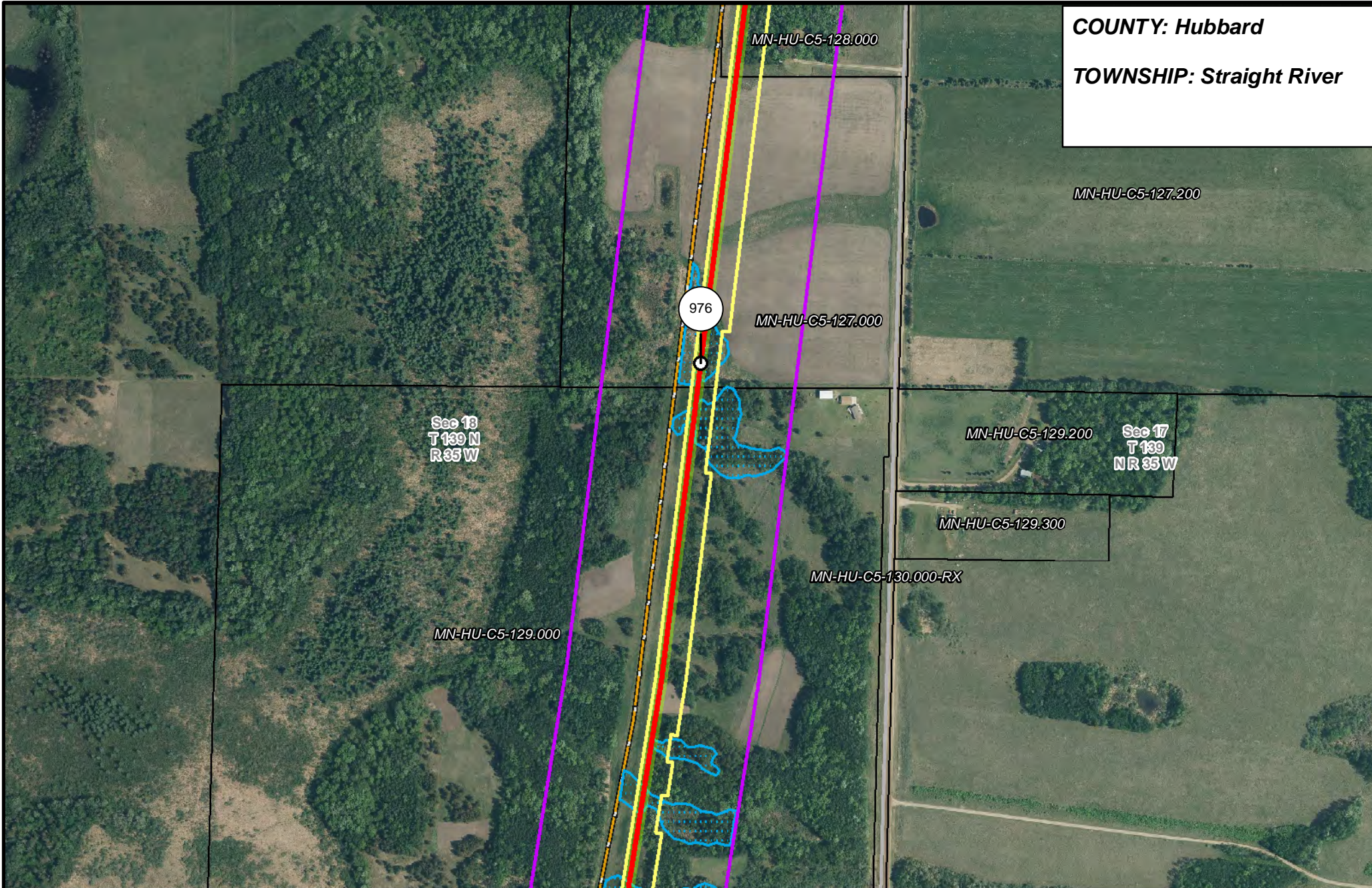


**LINE 3 REPLACEMENT PIPELINE ROUTE**

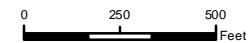
DRAWN: MLB CHECKED: --  
 DATE: August 31, 2018 SCALE: 1:5,000  
 Map 221 of 378



**COUNTY:** Hubbard  
**TOWNSHIP:** Straight River



- |                       |                                |                      |                        |
|-----------------------|--------------------------------|----------------------|------------------------|
| PUC Designated Route  | Mile Post                      | Surveyed Waterbodies | Tract Boundary         |
| ROW                   | Temporary Workspace            | ESA                  | MN Section Boundary    |
| Line 3R Pipeline      | Additional Temporary Workspace | Surveyed Wetlands    | Township/City Boundary |
| Valve Location        | Existing Enbridge Pipelines    | NWI Wetlands         | County Boundary        |
| Enbridge Pump Station | Existing Electric Transmission |                      |                        |
|                       | Existing Third Party Pipelines |                      |                        |



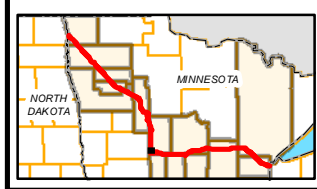
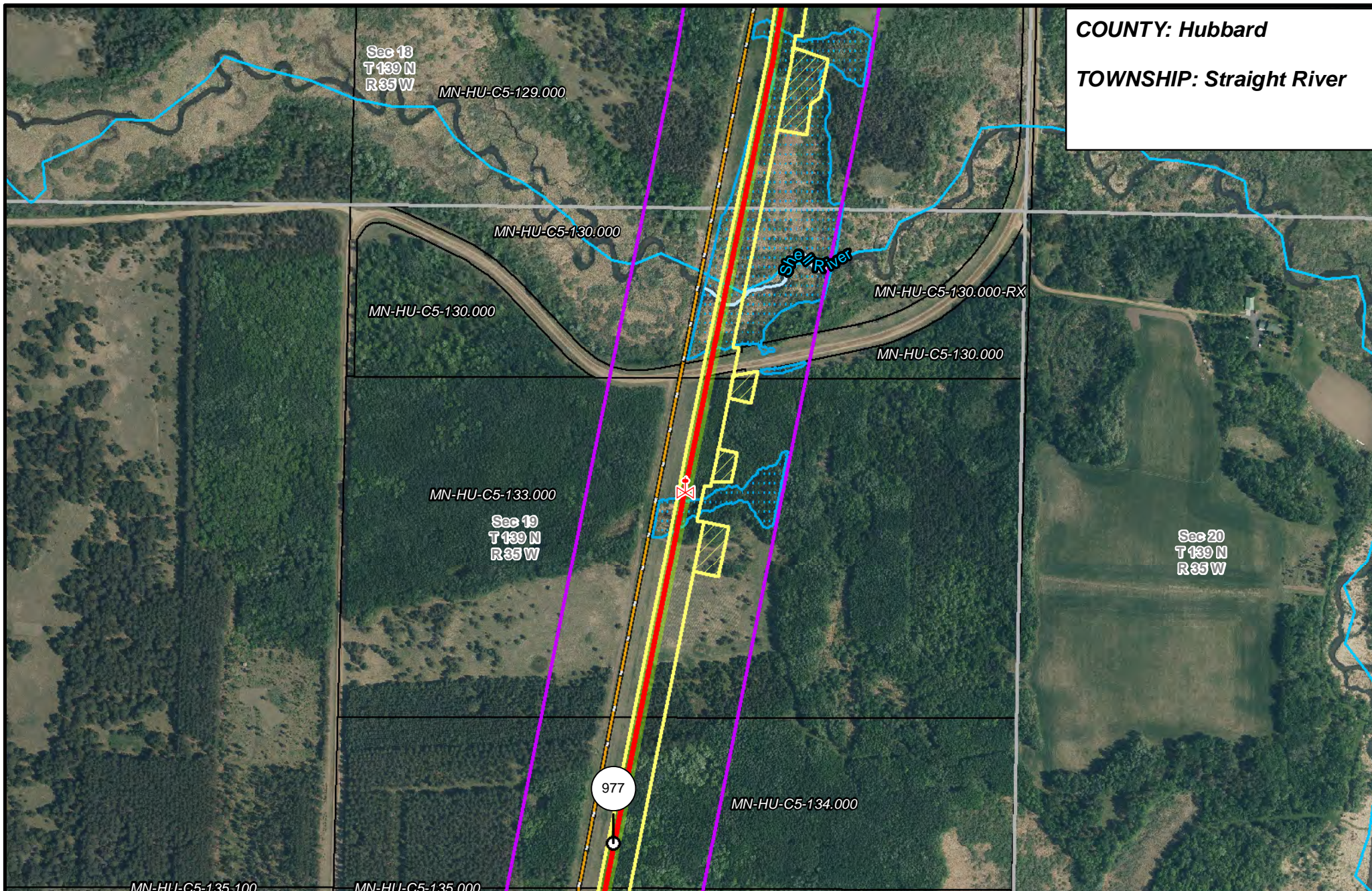
**LINE 3 REPLACEMENT PIPELINE ROUTE**

DRAWN: MLB      CHECKED: --  
 DATE: August 31, 2018      SCALE: 1:5,000

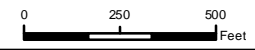
Map 222 of 378



**COUNTY:** Hubbard  
**TOWNSHIP:** Straight River



- |                       |                                |                      |                        |
|-----------------------|--------------------------------|----------------------|------------------------|
| PUC Designated Route  | Mile Post                      | Surveyed Waterbodies | Tract Boundary         |
| ROW                   | Temporary Workspace            | ESA                  | MN Section Boundary    |
| Line 3R Pipeline      | Additional Temporary Workspace | Surveyed Wetlands    | Township/City Boundary |
| Valve Location        | Existing Enbridge Pipelines    | NWI Wetlands         | County Boundary        |
| Enbridge Pump Station | Existing Electric Transmission |                      |                        |
|                       | Existing Third Party Pipelines |                      |                        |



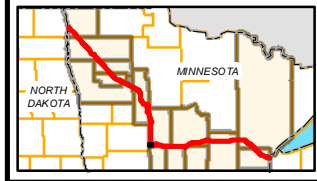
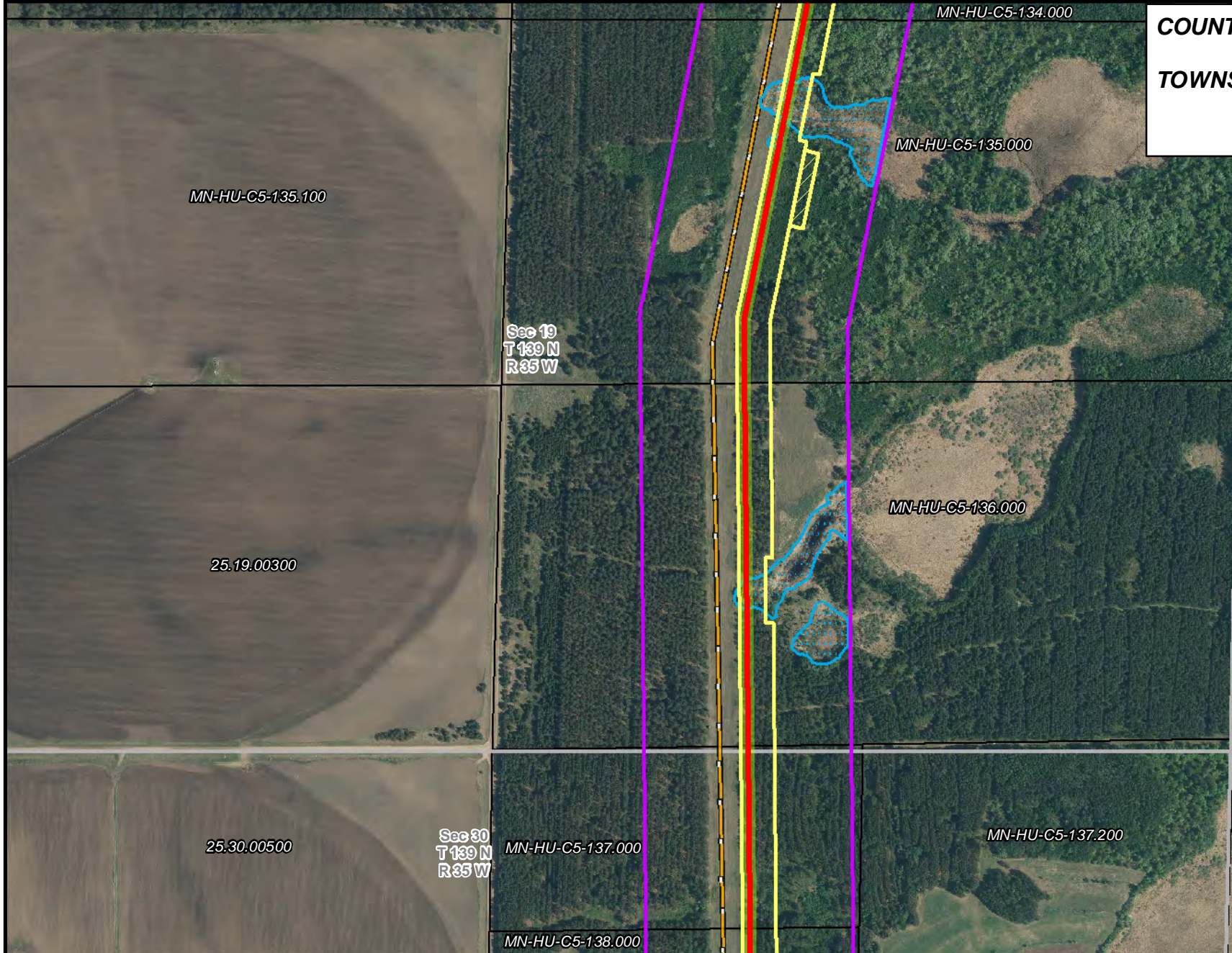
**LINE 3 REPLACEMENT PIPELINE ROUTE**

DRAWN: MLB      CHECKED: --  
 DATE: August 31, 2018      SCALE: 1:5,000

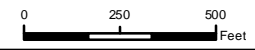
Map 223 of 378



**COUNTY: Hubbard**  
**TOWNSHIP: Straight River**



- |                       |                                |                      |                        |
|-----------------------|--------------------------------|----------------------|------------------------|
| PUC Designated Route  | Mile Post                      | Surveyed Waterbodies | Tract Boundary         |
| ROW                   | Temporary Workspace            | ESA                  | MN Section Boundary    |
| Line 3R Pipeline      | Additional Temporary Workspace | Surveyed Wetlands    | Township/City Boundary |
| Valve Location        | Existing Enbridge Pipelines    | NWI Wetlands         | County Boundary        |
| Enbridge Pump Station | Existing Electric Transmission |                      |                        |
|                       | Existing Third Party Pipelines |                      |                        |



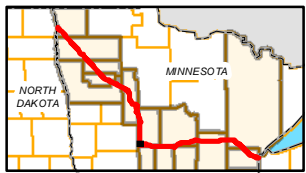
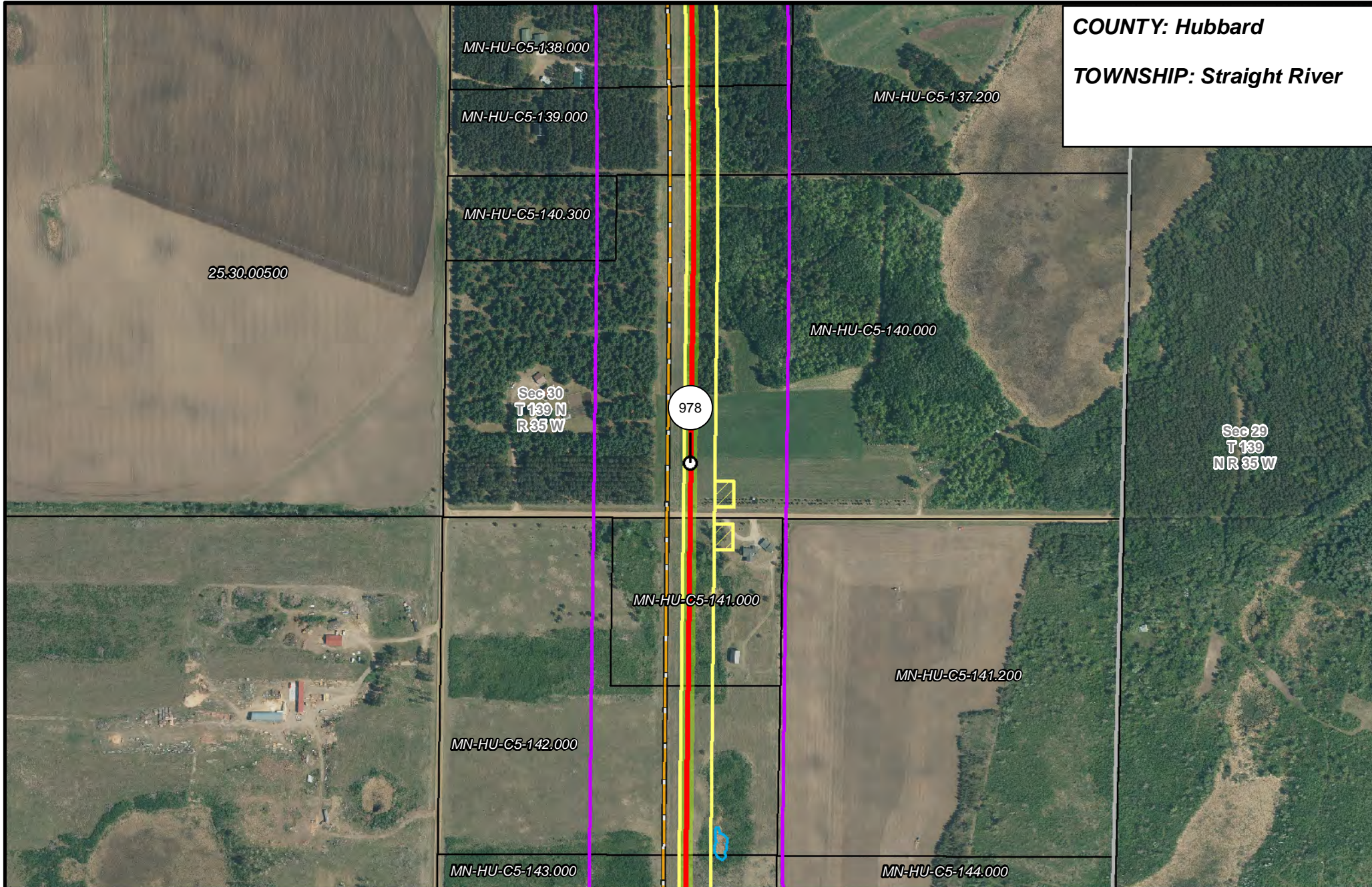
**LINE 3 REPLACEMENT PIPELINE ROUTE**

DRAWN: MLB      CHECKED: --  
 DATE: August 31, 2018      SCALE: 1:5,000

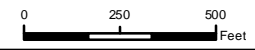
Map 224 of 378



**COUNTY:** Hubbard  
**TOWNSHIP:** Straight River



- PUC Designated Route
- ROW
- Line 3R Pipeline
- Valve Location
- Enbridge Pump Station
- Mile Post
- Temporary Workspace
- Additional Temporary Workspace
- Existing Enbridge Pipelines
- Existing Electric Transmission
- Existing Third Party Pipelines
- Surveyed Waterbodies
- ESA
- Surveyed Wetlands
- NWI Wetlands
- Tract Boundary
- MN Section Boundary
- Township/City Boundary
- County Boundary

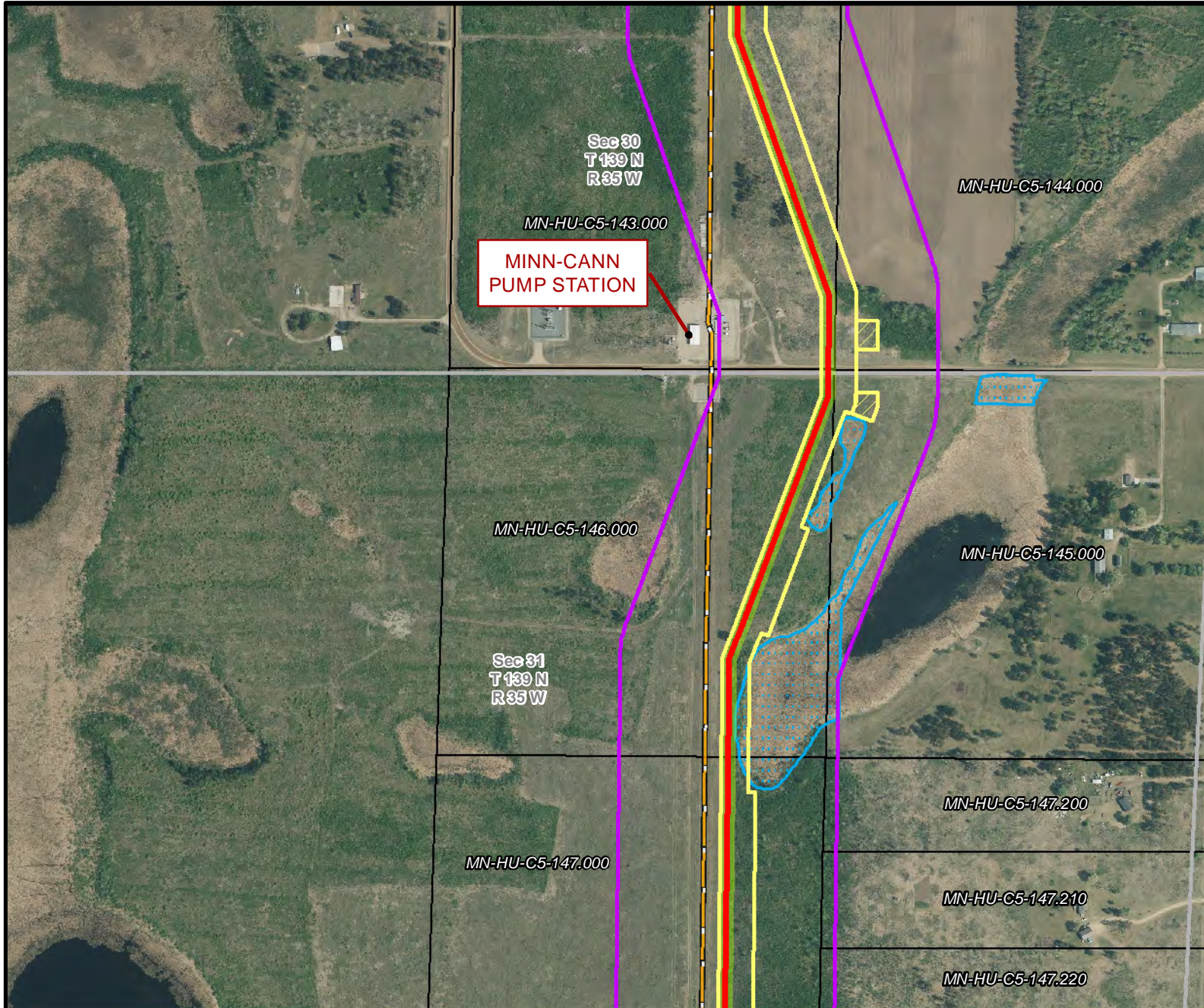


**LINE 3 REPLACEMENT  
PIPELINE ROUTE**

DRAWN: MLB CHECKED: --  
DATE: August 31, 2018 SCALE: 1:5,000  
Map 225 of 378



**COUNTY: Hubbard**  
**TOWNSHIP: Straight River**



**MINN-CANN  
PUMP STATION**

Sec 30  
T 139 N  
R 35 W

MN-HU-C5-143.000

MN-HU-C5-144.000

T 139 N  
R 35 W

MN-HU-C5-146.000

Sec 31  
T 139 N  
R 35 W

MN-HU-C5-145.000

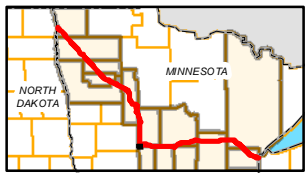
Sec 32  
T 139 N  
R 35 W

MN-HU-C5-147.000

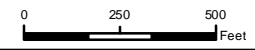
MN-HU-C5-147.200

MN-HU-C5-147.210

MN-HU-C5-147.220



- |                       |                                |                      |                        |
|-----------------------|--------------------------------|----------------------|------------------------|
| PUC Designated Route  | Mile Post                      | Surveyed Waterbodies | Tract Boundary         |
| ROW                   | Temporary Workspace            | ESA                  | MN Section Boundary    |
| Line 3R Pipeline      | Additional Temporary Workspace | Surveyed Wetlands    | Township/City Boundary |
| Valve Location        | Existing Enbridge Pipelines    | NWI Wetlands         | County Boundary        |
| Enbridge Pump Station | Existing Electric Transmission |                      |                        |
|                       | Existing Third Party Pipelines |                      |                        |

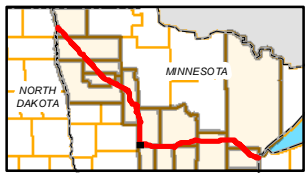
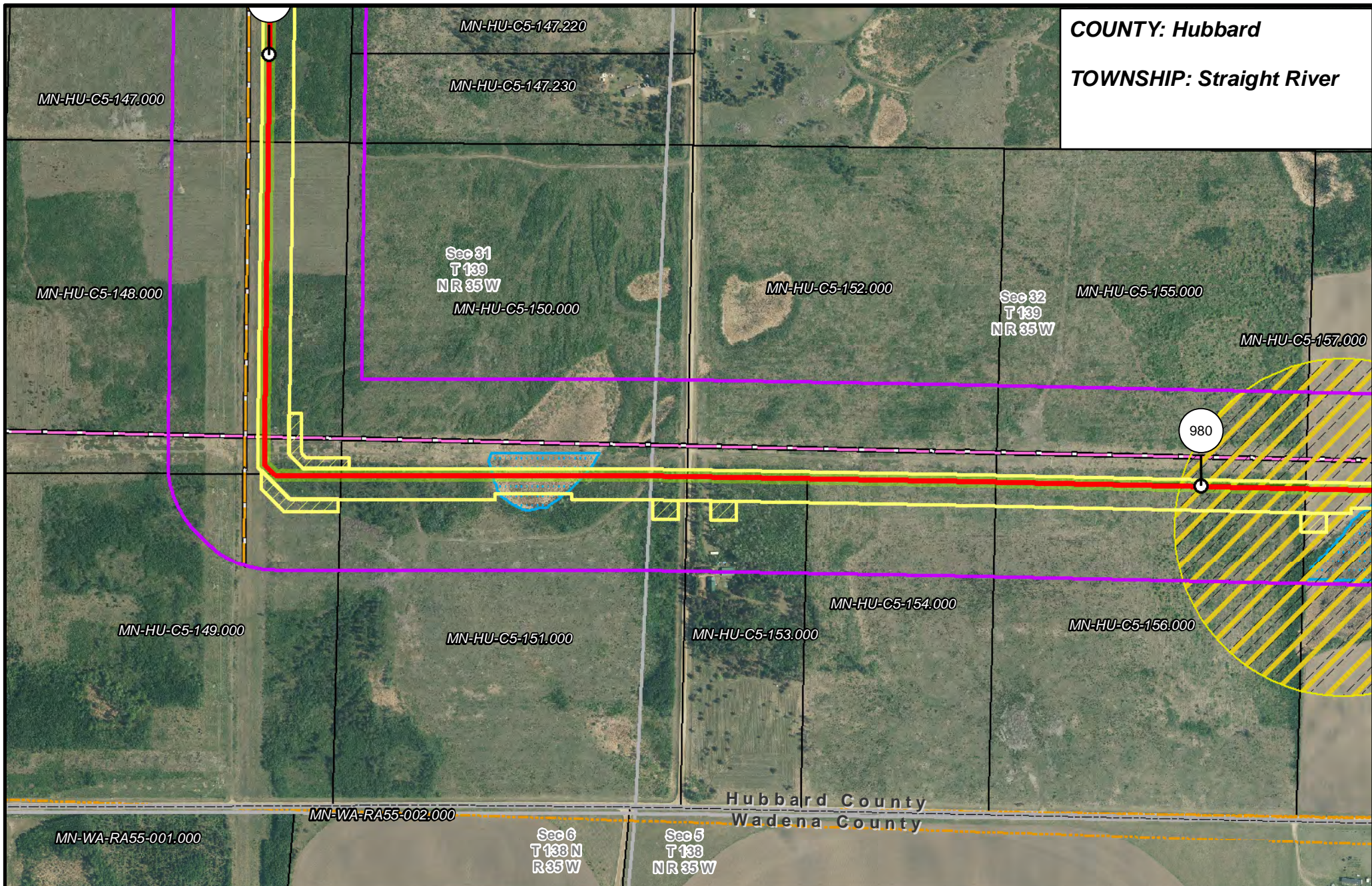


**LINE 3 REPLACEMENT  
PIPELINE ROUTE**

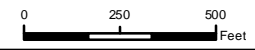
DRAWN: MLB CHECKED: --  
 DATE: August 31, 2018 SCALE: 1:5,000  
 Map 226 of 378



**COUNTY: Hubbard**  
**TOWNSHIP: Straight River**



- |                       |                                |                      |                        |
|-----------------------|--------------------------------|----------------------|------------------------|
| PUC Designated Route  | Mile Post                      | Surveyed Waterbodies | Tract Boundary         |
| ROW                   | Temporary Workspace            | ESA                  | MN Section Boundary    |
| Line 3R Pipeline      | Additional Temporary Workspace | Surveyed Wetlands    | Township/City Boundary |
| Valve Location        | Existing Enbridge Pipelines    | NWI Wetlands         | County Boundary        |
| Enbridge Pump Station | Existing Electric Transmission |                      |                        |
|                       | Existing Third Party Pipelines |                      |                        |

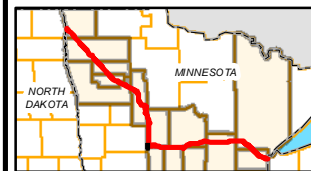
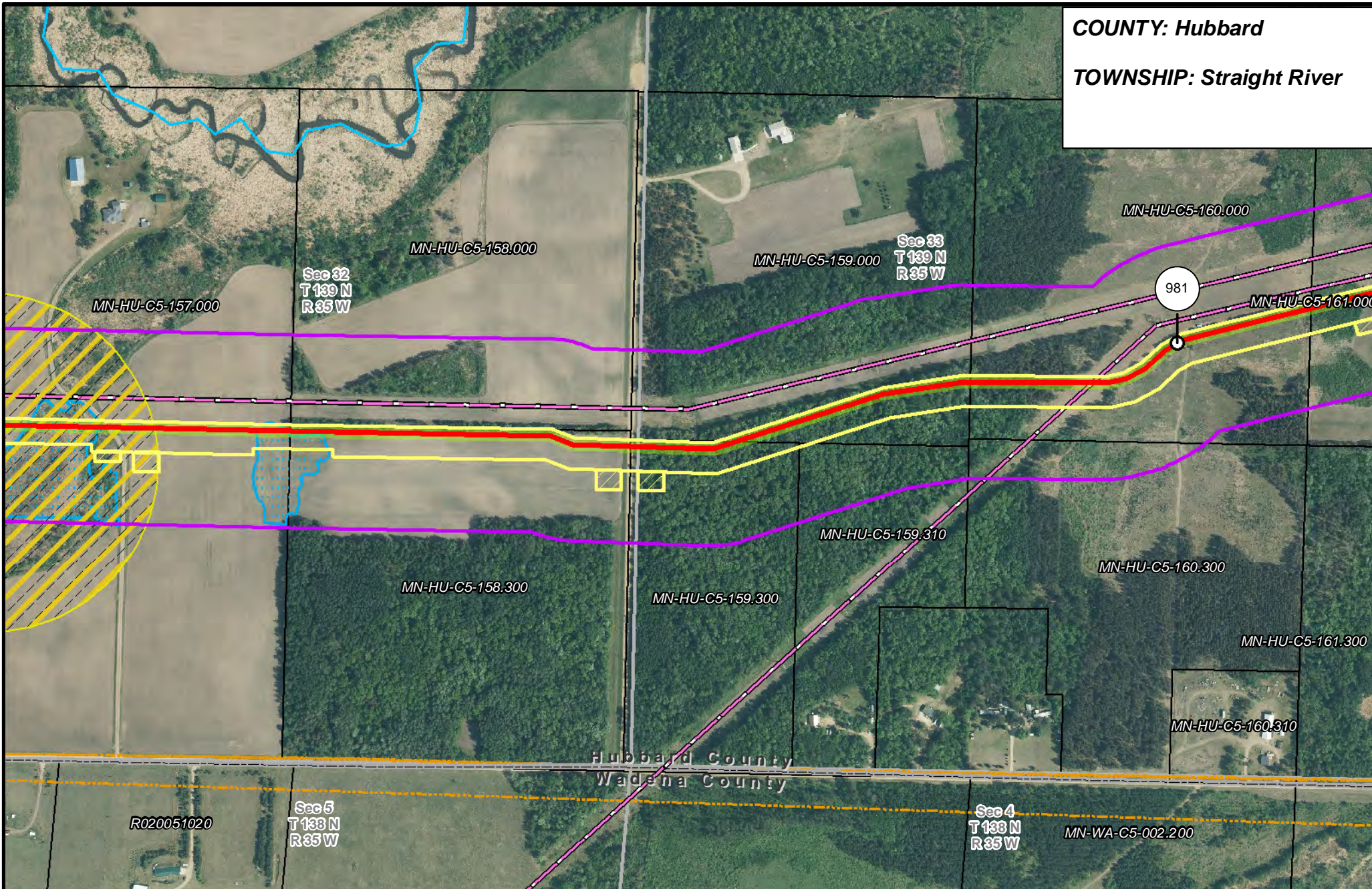


**LINE 3 REPLACEMENT PIPELINE ROUTE**

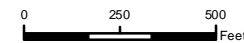
DRAWN: MLB CHECKED: --  
 DATE: August 31, 2018 SCALE: 1:5,000  
 Map 227 of 378



**COUNTY:** Hubbard  
**TOWNSHIP:** Straight River



- |                       |                                |                      |                        |
|-----------------------|--------------------------------|----------------------|------------------------|
| PUC Designated Route  | Mile Post                      | Surveyed Waterbodies | Tract Boundary         |
| ROW                   | Temporary Workspace            | ESA                  | MN Section Boundary    |
| Line 3R Pipeline      | Additional Temporary Workspace | Surveyed Wetlands    | Township/City Boundary |
| Valve Location        | Existing Enbridge Pipelines    | NWI Wetlands         | County Boundary        |
| Enbridge Pump Station | Existing Electric Transmission |                      |                        |
|                       | Existing Third Party Pipelines |                      |                        |



**LINE 3 REPLACEMENT PIPELINE ROUTE**

DRAWN: MLB      CHECKED: --  
 DATE: August 31, 2018      SCALE: 1:5,000  
 Map 228 of 378