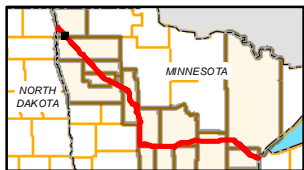
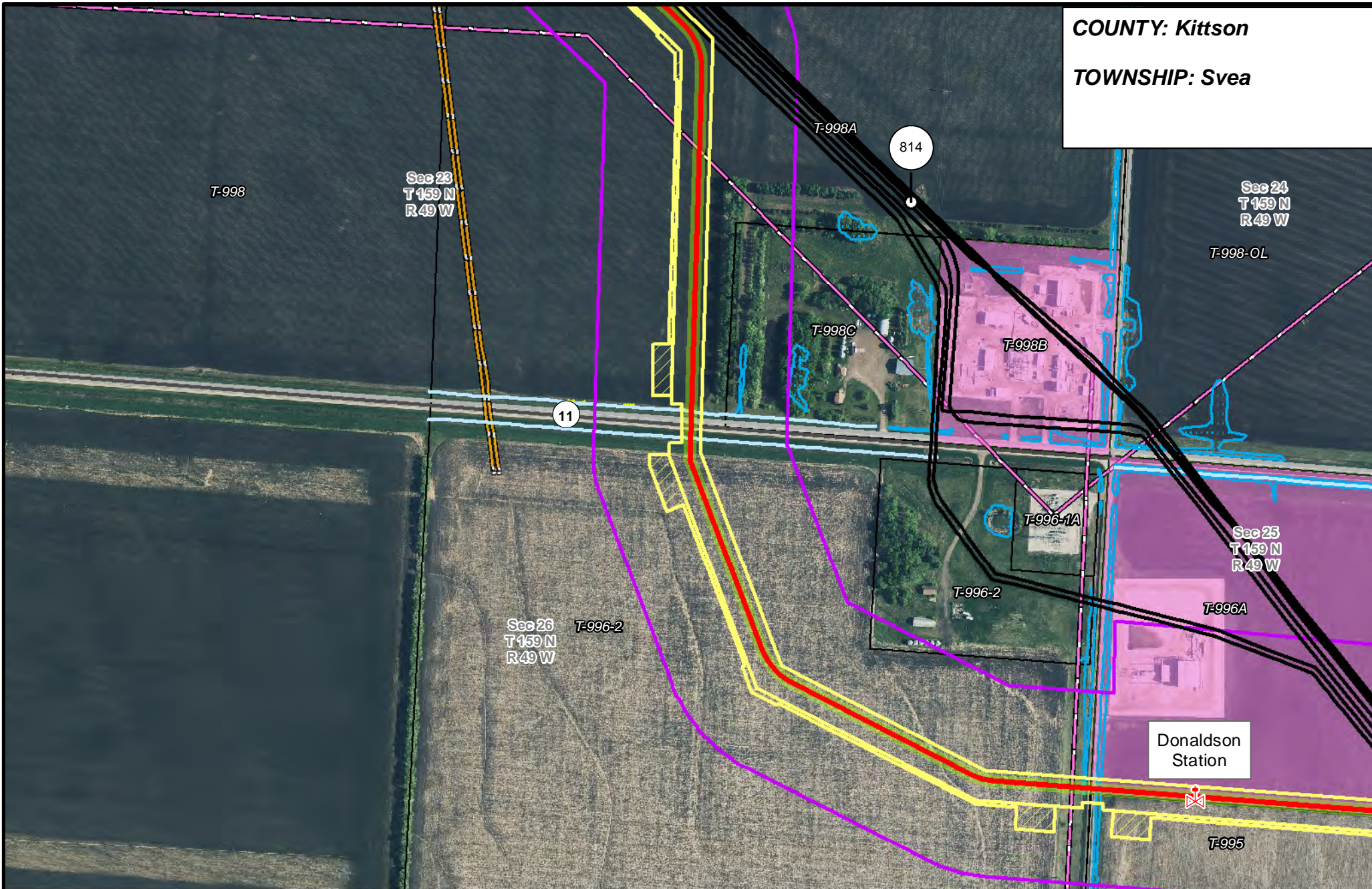
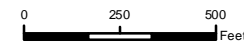


COUNTY: Kittson

TOWNSHIP: Svea



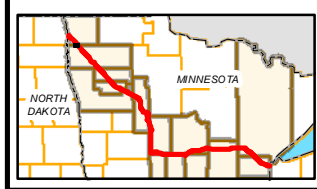
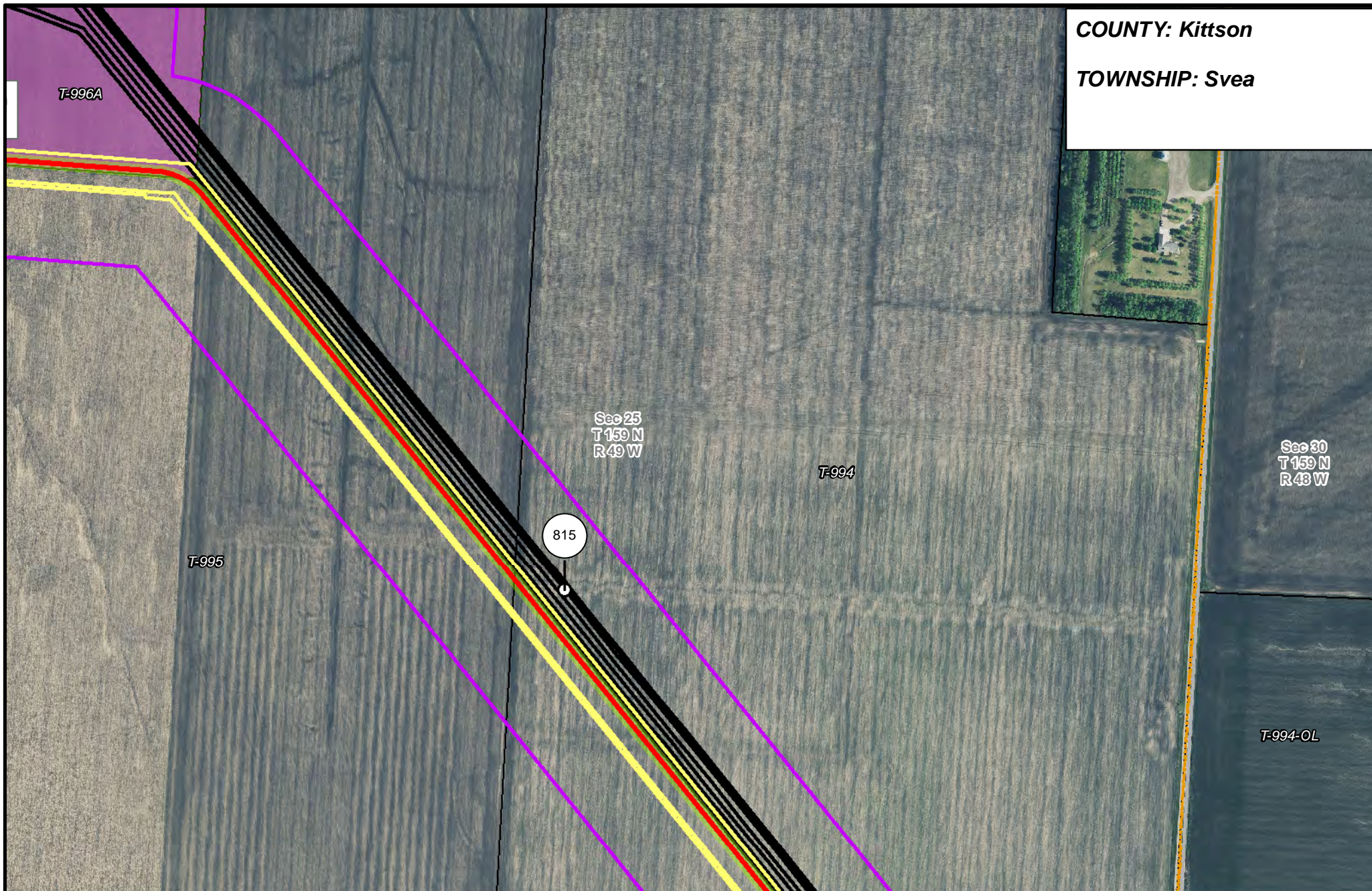
- | | | | |
|-----------------------|--------------------------------|----------------------|------------------------|
| PUC Designated Route | Mile Post | Surveyed Waterbodies | Tract Boundary |
| Line 3R Pipeline | Temporary Workspace | ESA | MN Section Boundary |
| Valve Location | Additional Temporary Workspace | Surveyed Wetlands | Township/City Boundary |
| Enbridge Pump Station | Existing Enbridge Pipelines | NWI Wetlands | County Boundary |
| | Existing Electric Transmission | | |
| | Existing Third Party Pipelines | | |



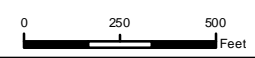
LINE 3 REPLACEMENT PIPELINE ROUTE

DRAWN: MLB CHECKED: --
DATE: August 31, 2018 SCALE: 1:5,000
Map 16 of 378

COUNTY: Kittson
TOWNSHIP: Svea



- | | | | |
|-----------------------|--------------------------------|----------------------|------------------------|
| PUC Designated Route | Mile Post | Surveyed Waterbodies | Tract Boundary |
| ROW | Temporary Workspace | ESA | MN Section Boundary |
| Line 3R Pipeline | Additional Temporary Workspace | Surveyed Wetlands | Township/City Boundary |
| Valve Location | Existing Enbridge Pipelines | NWI Wetlands | County Boundary |
| Enbridge Pump Station | Existing Electric Transmission | | |
| | Existing Third Party Pipelines | | |

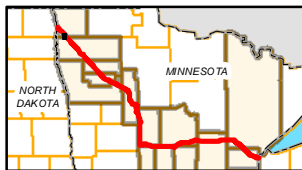
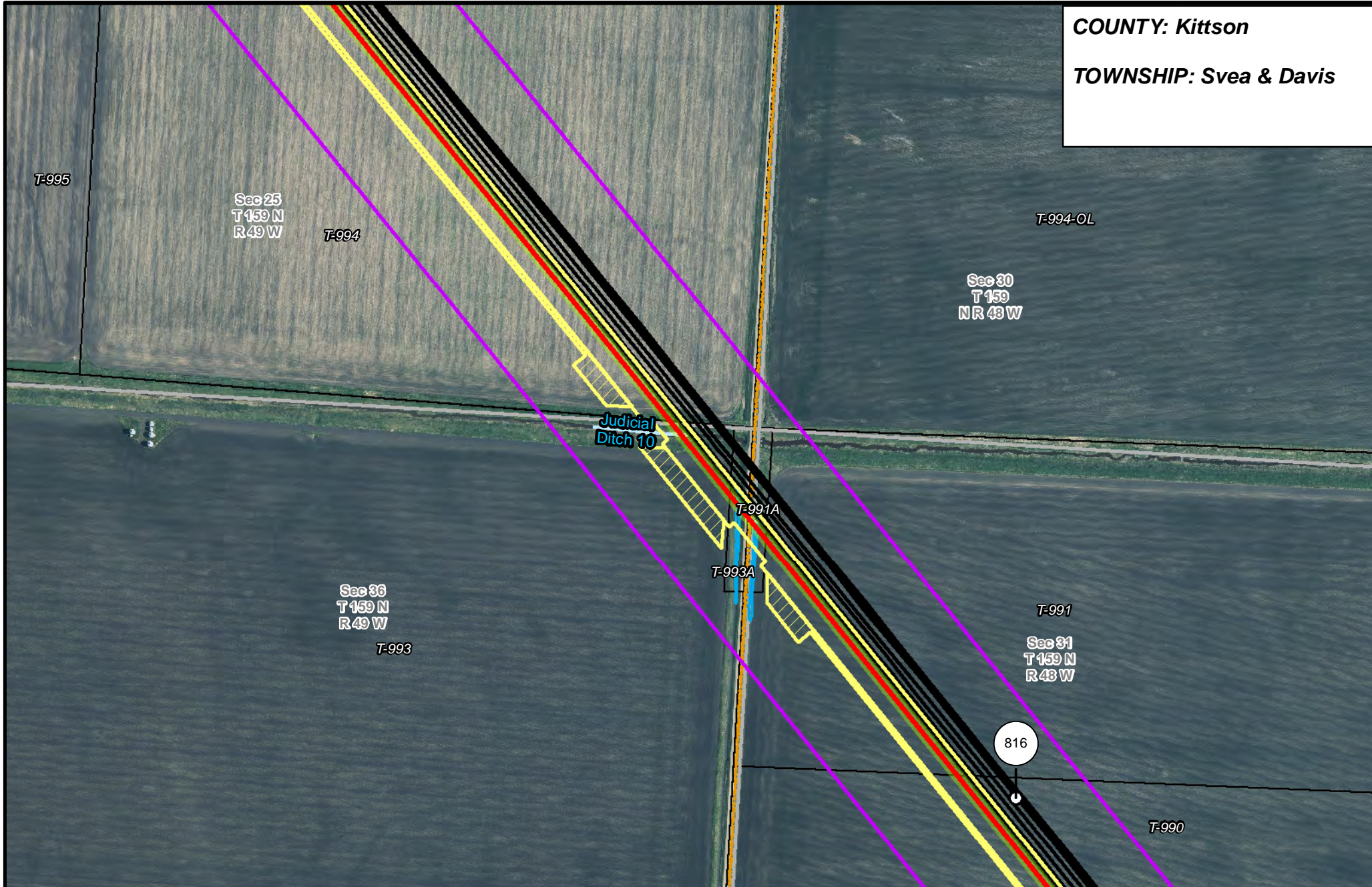


LINE 3 REPLACEMENT PIPELINE ROUTE

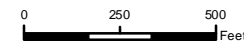
DRAWN: MLB CHECKED: --
 DATE: August 31, 2018 SCALE: 1:5,000
 Map 17 of 378

COUNTY: Kittson

TOWNSHIP: Svea & Davis



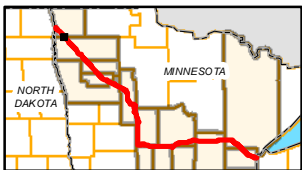
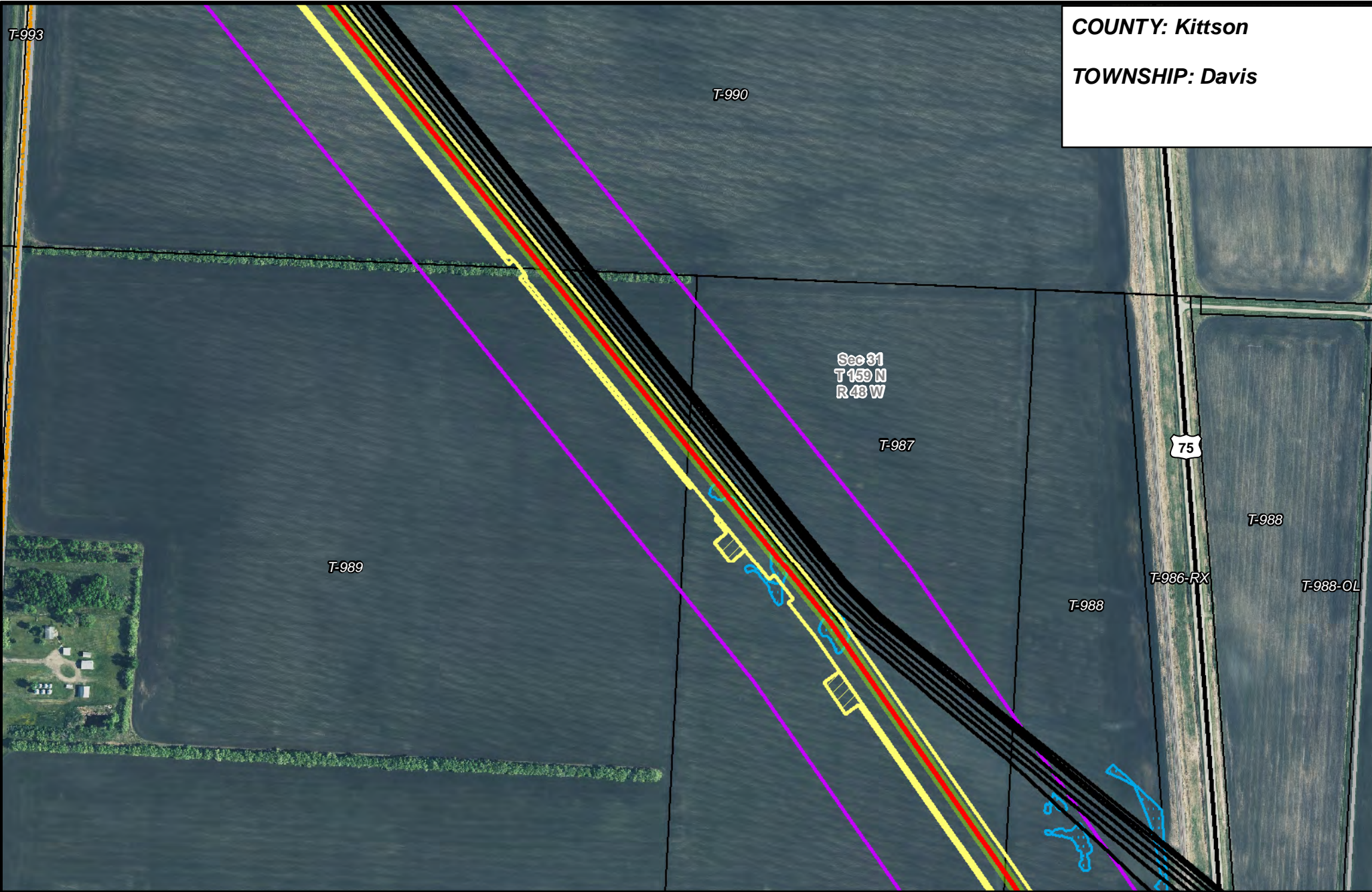
- | | | | |
|-----------------------|--------------------------------|----------------------|------------------------|
| PUC Designated Route | Mile Post | Surveyed Waterbodies | Tract Boundary |
| ROW | Temporary Workspace | ESA | MN Section Boundary |
| Line 3R Pipeline | Additional Temporary Workspace | Surveyed Wetlands | Township/City Boundary |
| Valve Location | Existing Enbridge Pipelines | NWI Wetlands | County Boundary |
| Enbridge Pump Station | Existing Electric Transmission | | |
| | Existing Third Party Pipelines | | |



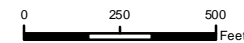
LINE 3 REPLACEMENT PIPELINE ROUTE

DRAWN: MLB CHECKED: --
DATE: August 31, 2018 SCALE: 1:5,000
Map 18 of 378

COUNTY: Kittson
TOWNSHIP: Davis



- | | | | |
|-----------------------|--------------------------------|----------------------|------------------------|
| PUC Designated Route | Mile Post | Surveyed Waterbodies | Tract Boundary |
| ROW | Temporary Workspace | ESA | MN Section Boundary |
| Line 3R Pipeline | Additional Temporary Workspace | Surveyed Wetlands | Township/City Boundary |
| Valve Location | Existing Enbridge Pipelines | NWI Wetlands | County Boundary |
| Enbridge Pump Station | Existing Electric Transmission | | |
| | Existing Third Party Pipelines | | |

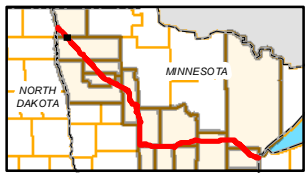
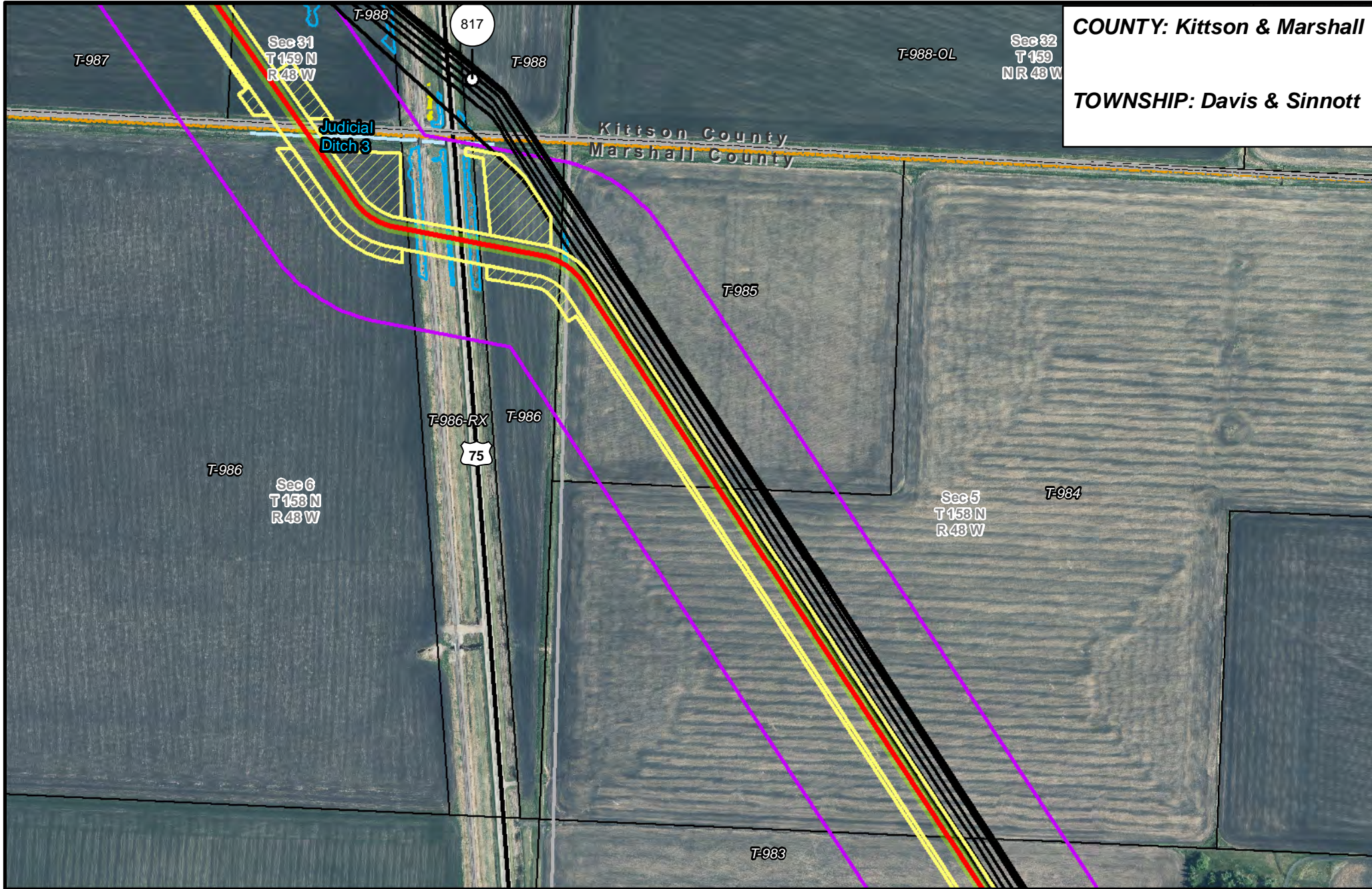


LINE 3 REPLACEMENT PIPELINE ROUTE

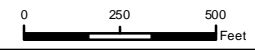
DRAWN: MLB CHECKED: --
 DATE: August 31, 2018 SCALE: 1:5,000
 Map 19 of 378

COUNTY: Kittson & Marshall

TOWNSHIP: Davis & Sinnott



- | | | | |
|-----------------------|--------------------------------|--------------------------------|------------------------|
| PUC Designated Route | Mile Post | Surveyed Waterbodies | Tract Boundary |
| ROW | Temporary Workspace | ESA | MN Section Boundary |
| Line 3R Pipeline | Additional Temporary Workspace | Surveyed Wetlands | Township/City Boundary |
| Valve Location | Existing Enbridge Pipelines | NWI Wetlands | County Boundary |
| Enbridge Pump Station | Existing Electric Transmission | Existing Third Party Pipelines | |

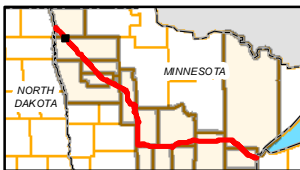
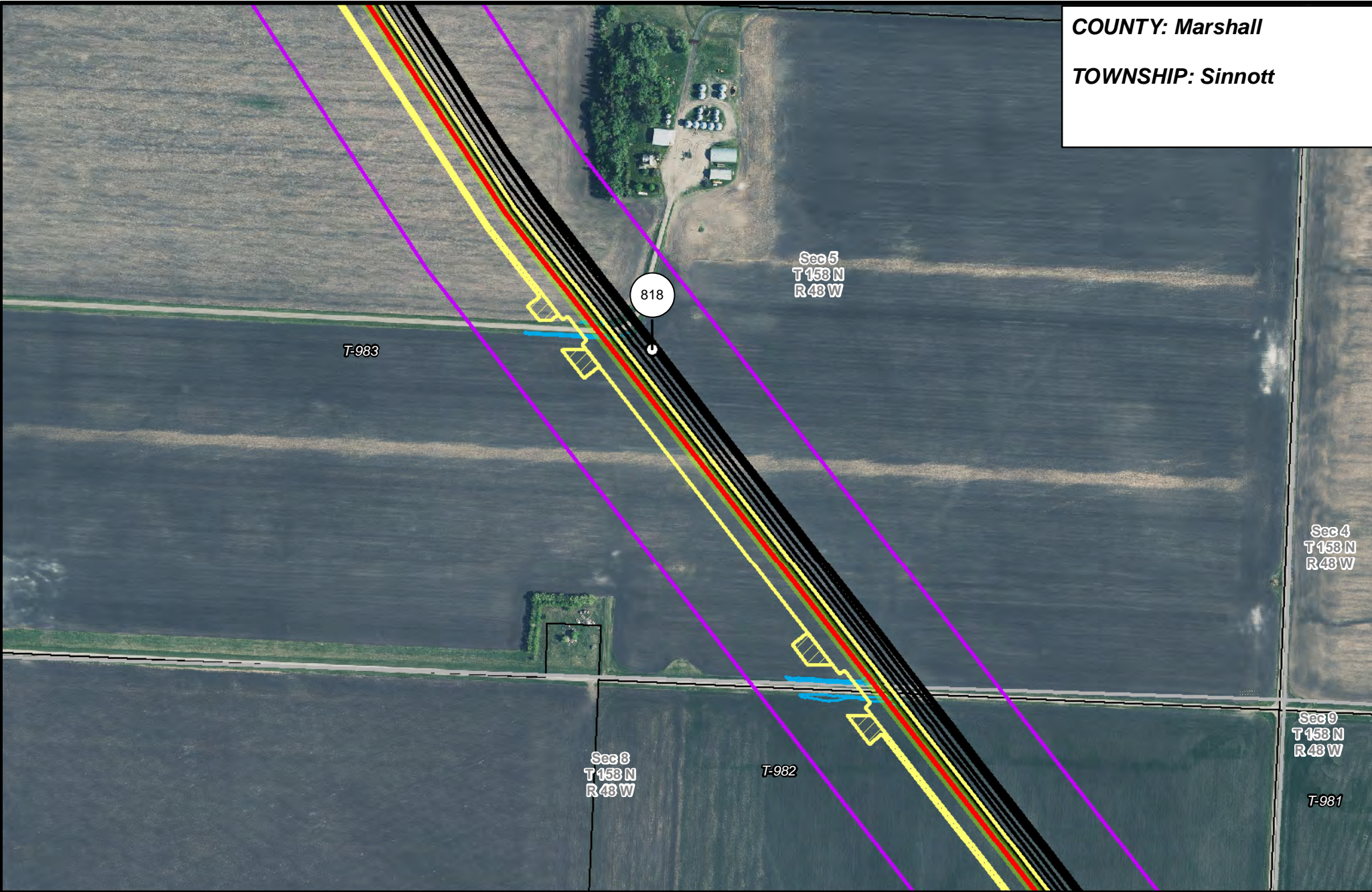


LINE 3 REPLACEMENT PIPELINE ROUTE

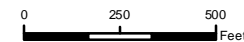
DRAWN: MLB CHECKED: --
 DATE: August 31, 2018 SCALE: 1:5,000
 Map 20 of 378

COUNTY: Marshall

TOWNSHIP: Sinnott



- | | | | |
|-----------------------|--------------------------------|----------------------|------------------------|
| PUC Designated Route | Mile Post | Surveyed Waterbodies | Tract Boundary |
| ROW | Temporary Workspace | ESA | MN Section Boundary |
| Line 3R Pipeline | Additional Temporary Workspace | Surveyed Wetlands | Township/City Boundary |
| Valve Location | Existing Enbridge Pipelines | NWI Wetlands | County Boundary |
| Enbridge Pump Station | Existing Electric Transmission | | |
| | Existing Third Party Pipelines | | |

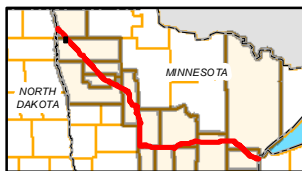
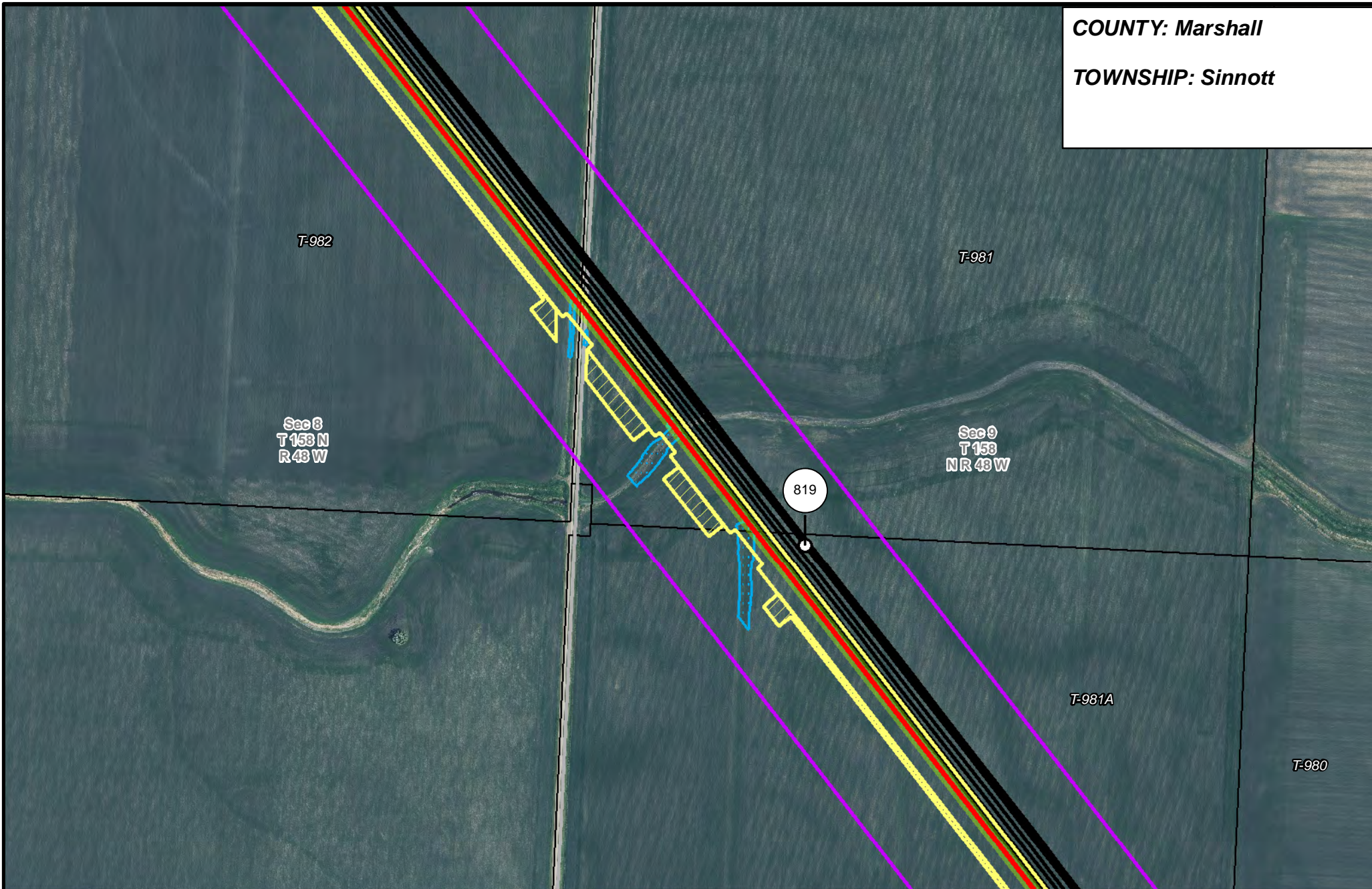


LINE 3 REPLACEMENT PIPELINE ROUTE

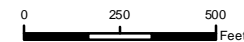
DRAWN: MLB CHECKED: --
DATE: August 31, 2018 SCALE: 1:5,000
Map 21 of 378

COUNTY: Marshall

TOWNSHIP: Sinnott



- | | | | |
|-----------------------|--------------------------------|----------------------|------------------------|
| PUC Designated Route | Mile Post | Surveyed Waterbodies | Tract Boundary |
| ROW | Temporary Workspace | ESA | MN Section Boundary |
| Line 3R Pipeline | Additional Temporary Workspace | Surveyed Wetlands | Township/City Boundary |
| Valve Location | Existing Enbridge Pipelines | NWI Wetlands | County Boundary |
| Enbridge Pump Station | Existing Electric Transmission | | |
| | Existing Third Party Pipelines | | |



LINE 3 REPLACEMENT PIPELINE ROUTE

DRAWN: MLB CHECKED: --
DATE: August 31, 2018 SCALE: 1:5,000
Map 22 of 378

COUNTY: Marshall

TOWNSHIP: Sinnott

T-981A

Sec 9
T 153 N
R 48 W

T-980

Sec 10
T 153 N
R 48 W

MN-MH-36-0080-000

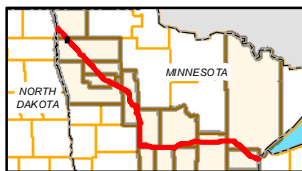
Sec 16
T 153 N
R 48 W

T-979

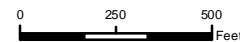
Sec 15
T 153
NR 48 W

820

T-978



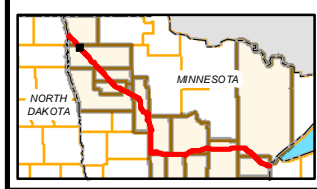
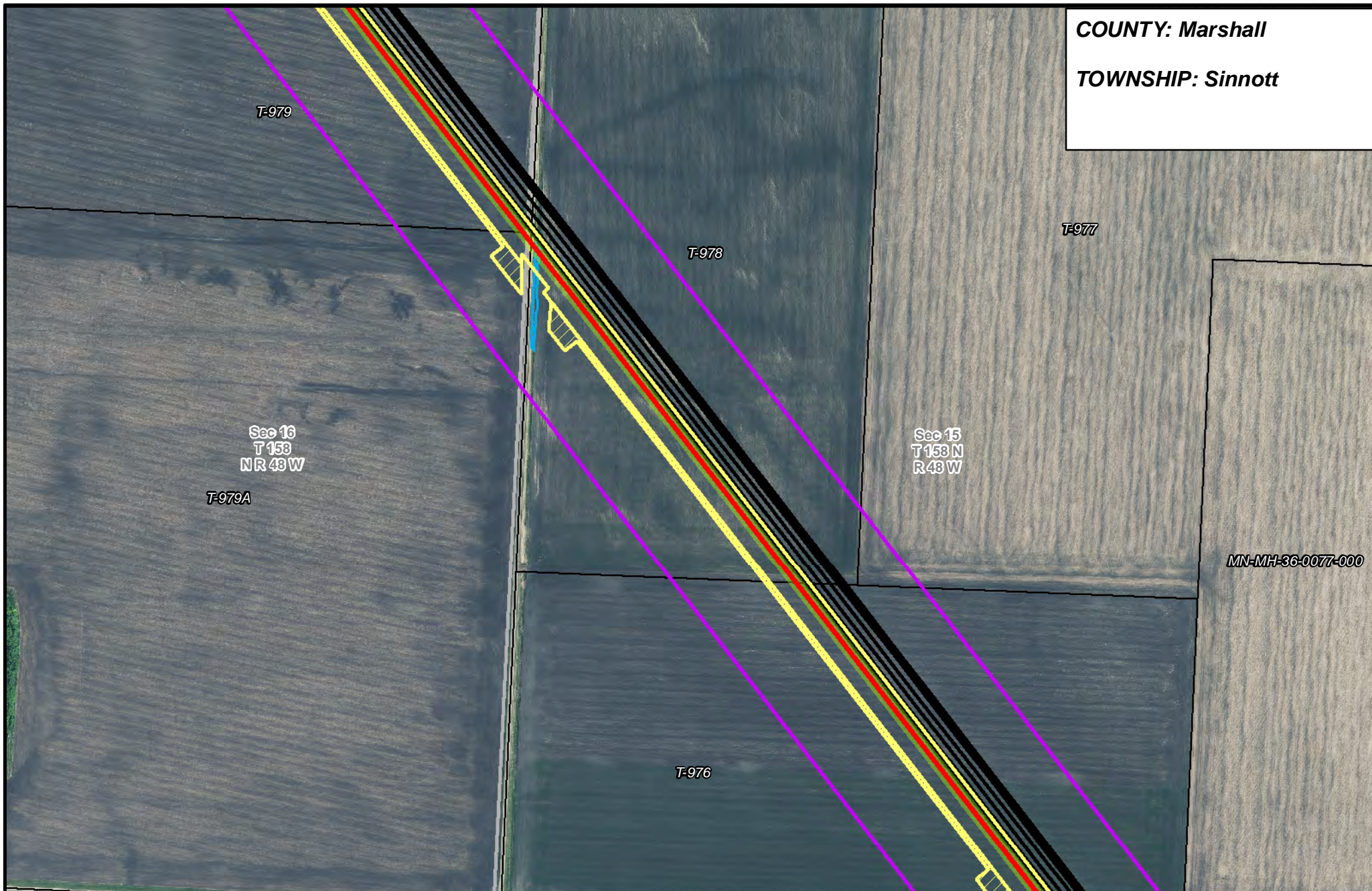
- PUC Designated Route
- ROW
- Line 3R Pipeline
- Valve Location
- Enbridge Pump Station
- Mile Post
- Temporary Workspace
- Additional Temporary Workspace
- Existing Enbridge Pipelines
- Existing Electric Transmission
- Existing Third Party Pipelines
- Surveyed Waterbodies
- ESA
- Surveyed Wetlands
- NWI Wetlands
- Tract Boundary
- MN Section Boundary
- Township/City Boundary
- County Boundary



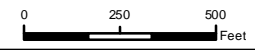
LINE 3 REPLACEMENT PIPELINE ROUTE

DRAWN: MLB CHECKED: --
 DATE: August 31, 2018 SCALE: 1:5,000
 Map 23 of 378

COUNTY: Marshall
TOWNSHIP: Sinnott



- | | | | |
|-----------------------|--------------------------------|----------------------|------------------------|
| PUC Designated Route | Mile Post | Surveyed Waterbodies | Tract Boundary |
| ROW | Temporary Workspace | ESA | MN Section Boundary |
| Line 3R Pipeline | Additional Temporary Workspace | Surveyed Wetlands | Township/City Boundary |
| Valve Location | Existing Enbridge Pipelines | NWI Wetlands | County Boundary |
| Enbridge Pump Station | Existing Electric Transmission | | |
| | Existing Third Party Pipelines | | |

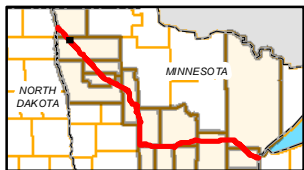
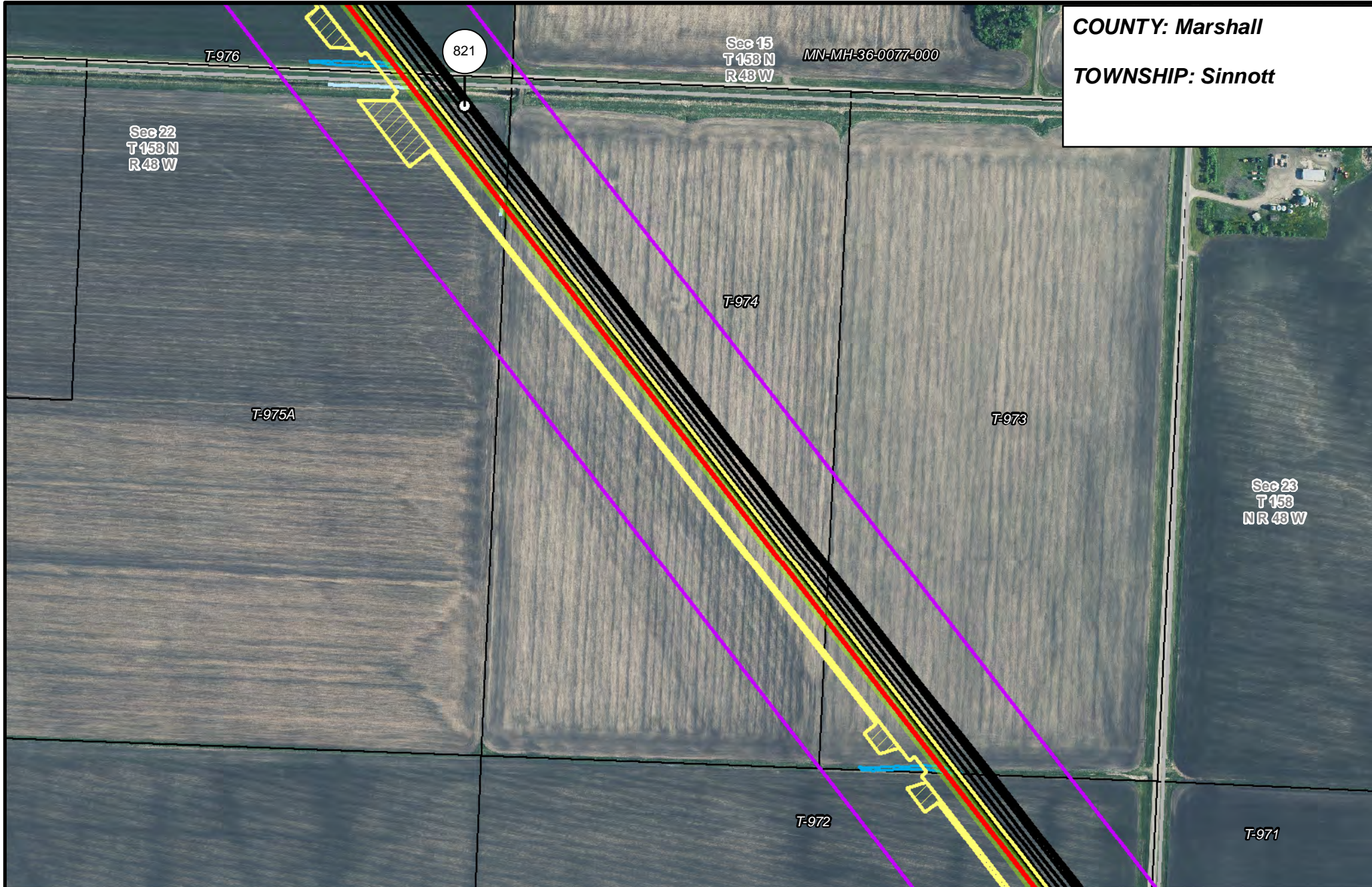


LINE 3 REPLACEMENT PIPELINE ROUTE

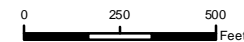
DRAWN: MLB CHECKED: --
 DATE: August 31, 2018 SCALE: 1:5,000
 Map 24 of 378

COUNTY: Marshall

TOWNSHIP: Sinnott



- | | | | |
|-----------------------|--------------------------------|----------------------|------------------------|
| PUC Designated Route | Mile Post | Surveyed Waterbodies | Tract Boundary |
| ROW | Temporary Workspace | ESA | MN Section Boundary |
| Line 3R Pipeline | Additional Temporary Workspace | Surveyed Wetlands | Township/City Boundary |
| Valve Location | Existing Enbridge Pipelines | NWI Wetlands | County Boundary |
| Enbridge Pump Station | Existing Electric Transmission | | |
| | Existing Third Party Pipelines | | |

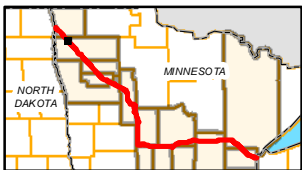
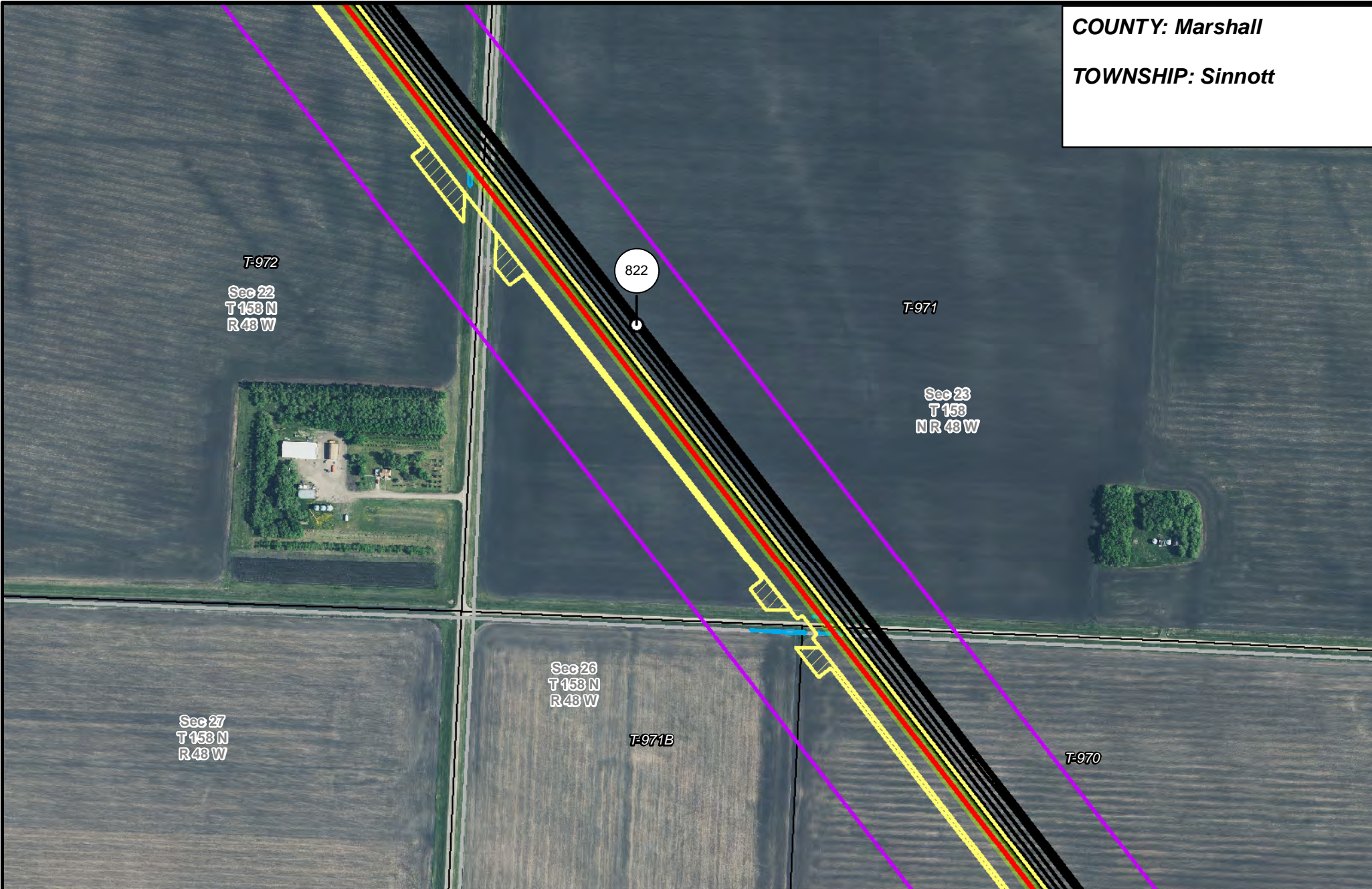


LINE 3 REPLACEMENT PIPELINE ROUTE

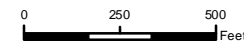
DRAWN: MLB CHECKED: --
 DATE: August 31, 2018 SCALE: 1:5,000
 Map 25 of 378

COUNTY: Marshall

TOWNSHIP: Sinnott



- | | | | |
|-----------------------|--------------------------------|----------------------|------------------------|
| PUC Designated Route | Mile Post | Surveyed Waterbodies | Tract Boundary |
| ROW | Temporary Workspace | ESA | MN Section Boundary |
| Line 3R Pipeline | Additional Temporary Workspace | Surveyed Wetlands | Township/City Boundary |
| Valve Location | Existing Enbridge Pipelines | NWI Wetlands | County Boundary |
| Enbridge Pump Station | Existing Electric Transmission | | |
| | Existing Third Party Pipelines | | |

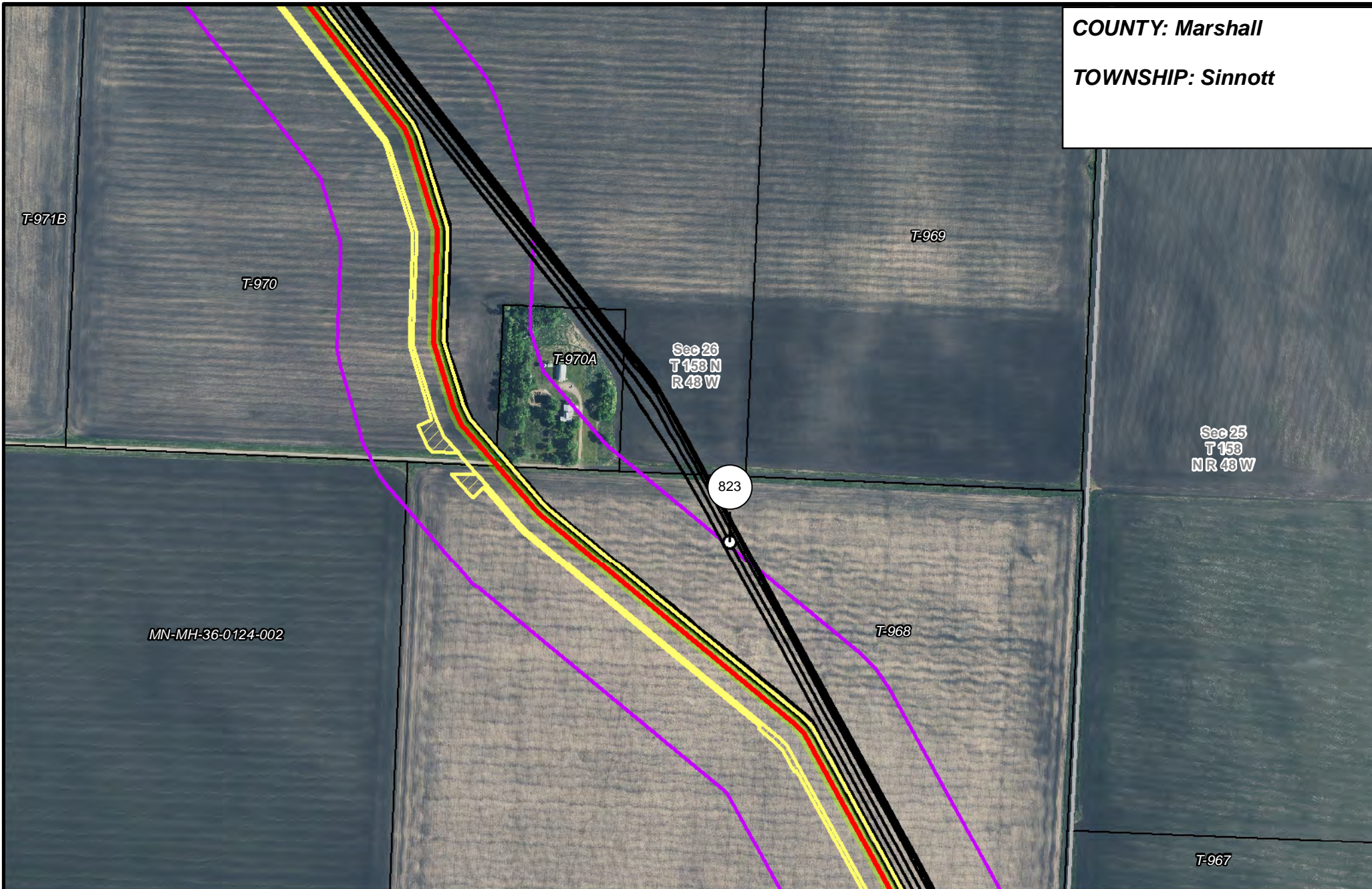


LINE 3 REPLACEMENT PIPELINE ROUTE

DRAWN: MLB CHECKED: --
DATE: August 31, 2018 SCALE: 1:5,000
Map 26 of 378

COUNTY: Marshall

TOWNSHIP: Sinnott



MN-MH-36-0124-002

T-970A

Sec 26
T153 N
R48 W

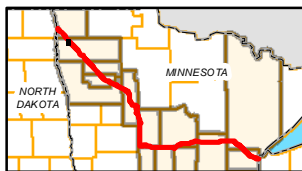
823

T-969

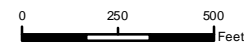
T-968

Sec 25
T153
NR 48 W

T-967



- | | | | |
|-----------------------|--------------------------------|----------------------|------------------------|
| PUC Designated Route | Mile Post | Surveyed Waterbodies | Tract Boundary |
| ROW | Temporary Workspace | ESA | MN Section Boundary |
| Line 3R Pipeline | Additional Temporary Workspace | Surveyed Wetlands | Township/City Boundary |
| Valve Location | Existing Enbridge Pipelines | NWI Wetlands | County Boundary |
| Enbridge Pump Station | Existing Electric Transmission | | |
| | Existing Third Party Pipelines | | |



LINE 3 REPLACEMENT PIPELINE ROUTE

DRAWN: MLB CHECKED: --
DATE: August 31, 2018 SCALE: 1:5,000
Map 27 of 378

COUNTY: Marshall

TOWNSHIP: Sinnott

T-968

Sec 26
T 153 N
R 48 W

Sec
T 153 N
R 48 W
T-967

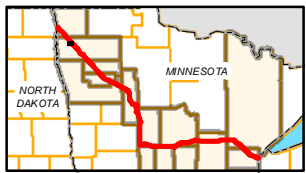
T-966

T-966-1

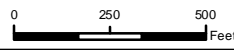
Sec 35
T 153 N
R 48 W

Sec 36
T 153 N
R 48 W

824



- PUC Designated Route
- ROW
- Line 3R Pipeline
- Valve Location
- Enbridge Pump Station
- Mile Post
- Temporary Workspace
- Additional Temporary Workspace
- Existing Enbridge Pipelines
- Existing Electric Transmission
- Existing Third Party Pipelines
- Surveyed Waterbodies
- ESA
- Surveyed Wetlands
- NWI Wetlands
- Tract Boundary
- MN Section Boundary
- Township/City Boundary
- County Boundary



LINE 3 REPLACEMENT PIPELINE ROUTE

DRAWN: MLB CHECKED: --
DATE: August 31, 2018 SCALE: 1:5,000
Map 28 of 378

COUNTY: Marshall

TOWNSHIP: Sinnott & Tamarac

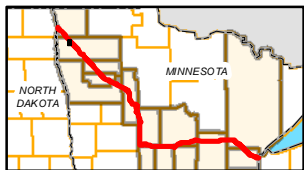
Sec 35
T153 N
R48 W

Sec 36
T153 N
R48 W

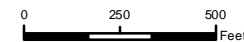
T-966

Sec 1
T157 NR 48 W

T-964A



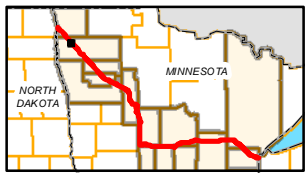
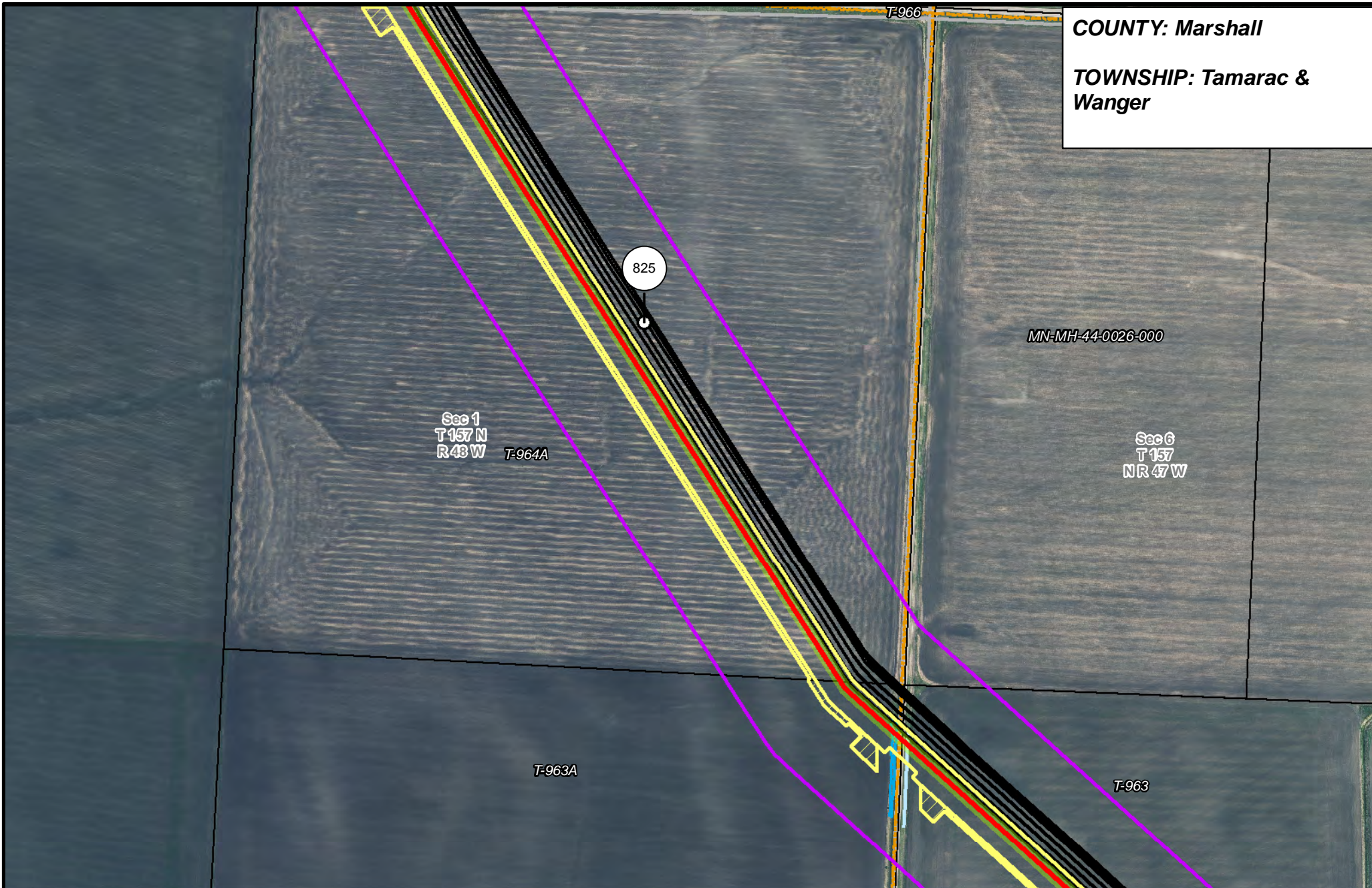
- | | | | |
|-----------------------|--------------------------------|----------------------|------------------------|
| PUC Designated Route | Mile Post | Surveyed Waterbodies | Tract Boundary |
| ROW | Temporary Workspace | ESA | MN Section Boundary |
| Line 3R Pipeline | Additional Temporary Workspace | Surveyed Wetlands | Township/City Boundary |
| Valve Location | Existing Enbridge Pipelines | NWI Wetlands | County Boundary |
| Enbridge Pump Station | Existing Electric Transmission | | |
| | Existing Third Party Pipelines | | |



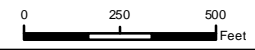
LINE 3 REPLACEMENT PIPELINE ROUTE

DRAWN: MLB CHECKED: --
DATE: August 31, 2018 SCALE: 1:5,000
Map 29 of 378

COUNTY: Marshall
TOWNSHIP: Tamarac & Wanger



- | | | | |
|-----------------------|--------------------------------|----------------------|------------------------|
| PUC Designated Route | Mile Post | Surveyed Waterbodies | Tract Boundary |
| ROW | Temporary Workspace | ESA | MN Section Boundary |
| Line 3R Pipeline | Additional Temporary Workspace | Surveyed Wetlands | Township/City Boundary |
| Valve Location | Existing Enbridge Pipelines | NWI Wetlands | County Boundary |
| Enbridge Pump Station | Existing Electric Transmission | | |
| | Existing Third Party Pipelines | | |

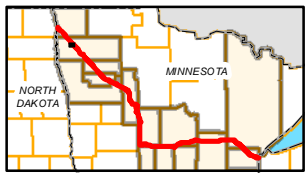
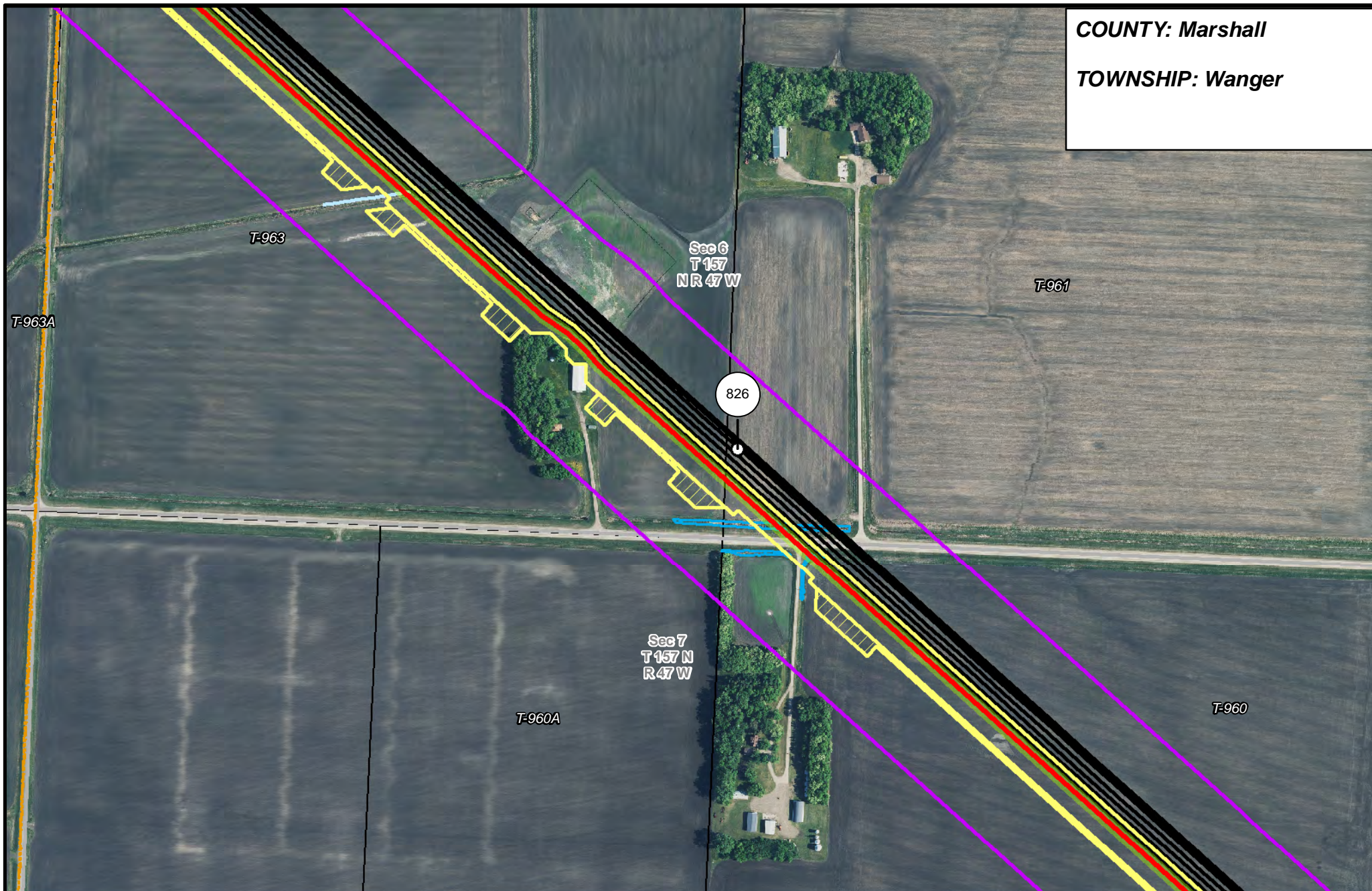


LINE 3 REPLACEMENT PIPELINE ROUTE

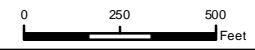
DRAWN: MLB CHECKED: --
 DATE: August 31, 2018 SCALE: 1:5,000
 Map 30 of 378

COUNTY: Marshall

TOWNSHIP: Wanger



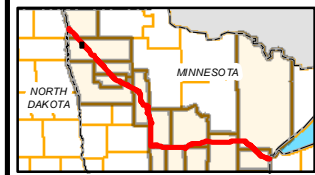
- | | | | |
|-----------------------|--------------------------------|----------------------|------------------------|
| PUC Designated Route | Mile Post | Surveyed Waterbodies | Tract Boundary |
| ROW | Temporary Workspace | ESA | MN Section Boundary |
| Line 3R Pipeline | Additional Temporary Workspace | Surveyed Wetlands | Township/City Boundary |
| Valve Location | Existing Enbridge Pipelines | NWI Wetlands | County Boundary |
| Enbridge Pump Station | Existing Electric Transmission | | |
| | Existing Third Party Pipelines | | |



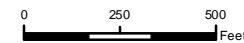
LINE 3 REPLACEMENT PIPELINE ROUTE

DRAWN: MLB CHECKED: --
DATE: August 31, 2018 SCALE: 1:5,000
Map 31 of 378

COUNTY: Marshall
TOWNSHIP: Wanger



- | | | | |
|-----------------------|--------------------------------|----------------------|------------------------|
| PUC Designated Route | Mile Post | Surveyed Waterbodies | Tract Boundary |
| ROW | Temporary Workspace | ESA | MN Section Boundary |
| Line 3R Pipeline | Additional Temporary Workspace | Surveyed Wetlands | Township/City Boundary |
| Valve Location | Existing Enbridge Pipelines | NWI Wetlands | County Boundary |
| Enbridge Pump Station | Existing Electric Transmission | | |
| | Existing Third Party Pipelines | | |



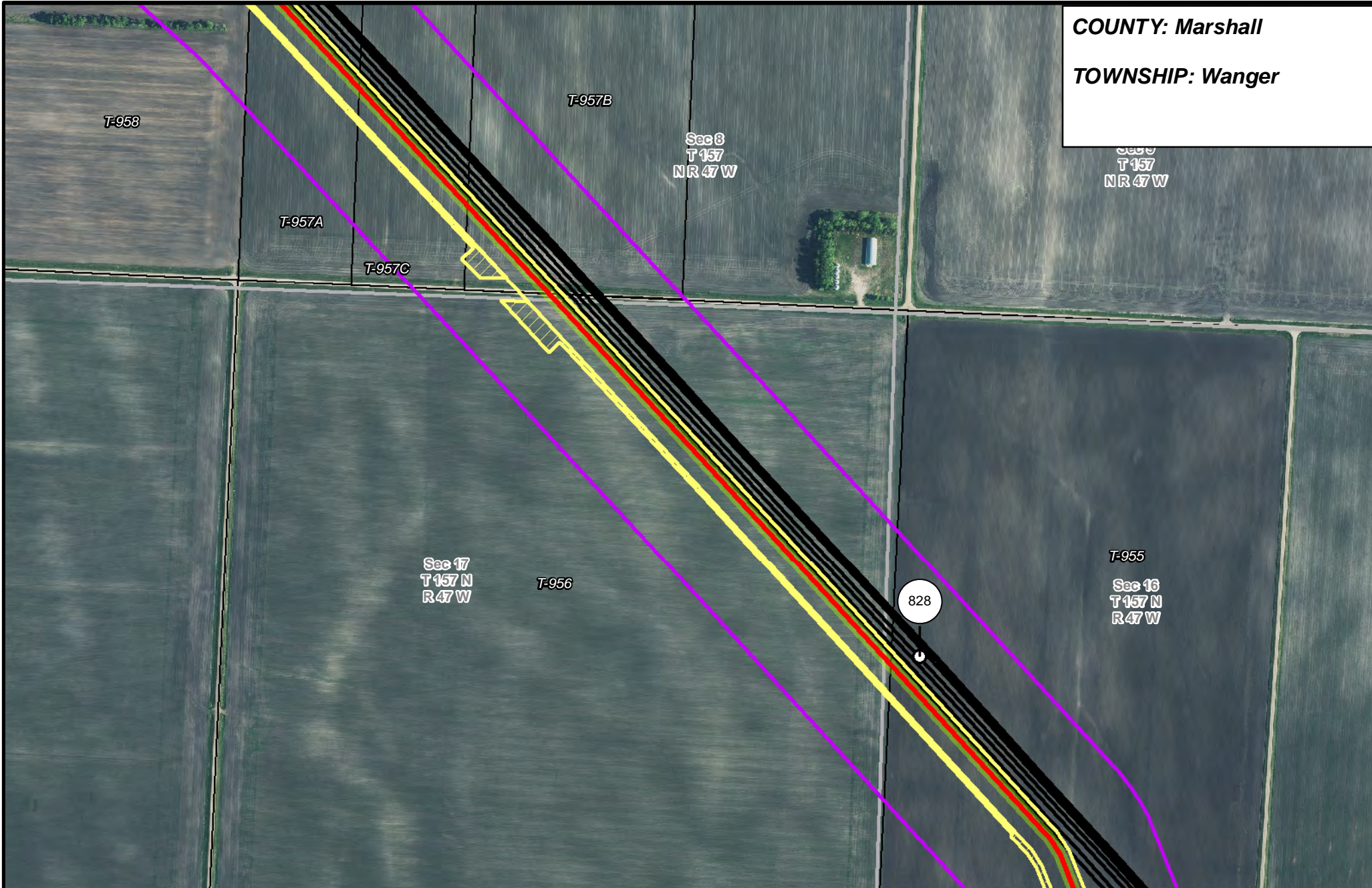
LINE 3 REPLACEMENT PIPELINE ROUTE

DRAWN: MLB CHECKED: --
 DATE: August 31, 2018 SCALE: 1:5,000

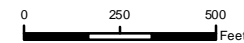
Map 32 of 378

COUNTY: Marshall

TOWNSHIP: Wanger



- | | | | |
|-----------------------|--------------------------------|----------------------|------------------------|
| PUC Designated Route | Mile Post | Surveyed Waterbodies | Tract Boundary |
| ROW | Temporary Workspace | ESA | MN Section Boundary |
| Line 3R Pipeline | Additional Temporary Workspace | Surveyed Wetlands | Township/City Boundary |
| Valve Location | Existing Enbridge Pipelines | NWI Wetlands | County Boundary |
| Enbridge Pump Station | Existing Electric Transmission | | |
| | Existing Third Party Pipelines | | |



LINE 3 REPLACEMENT PIPELINE ROUTE

DRAWN: MLB CHECKED: --
DATE: August 31, 2018 SCALE: 1:5,000
Map 33 of 378

COUNTY: Marshall

TOWNSHIP: Wanger

T-956

Sec 17
T 157 N
R 47 W

T-955

Sec 16
T 157 N
R 47 W

Tamarac River

T-953-2

T-954

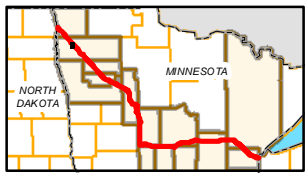
T-952-2

Sec 20
T 157 N
R 47 W

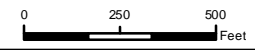
T-952-1

Sec 21
T 157 N
R 47 W

829



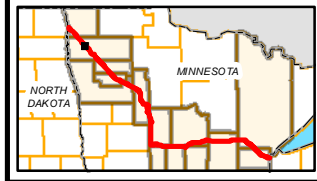
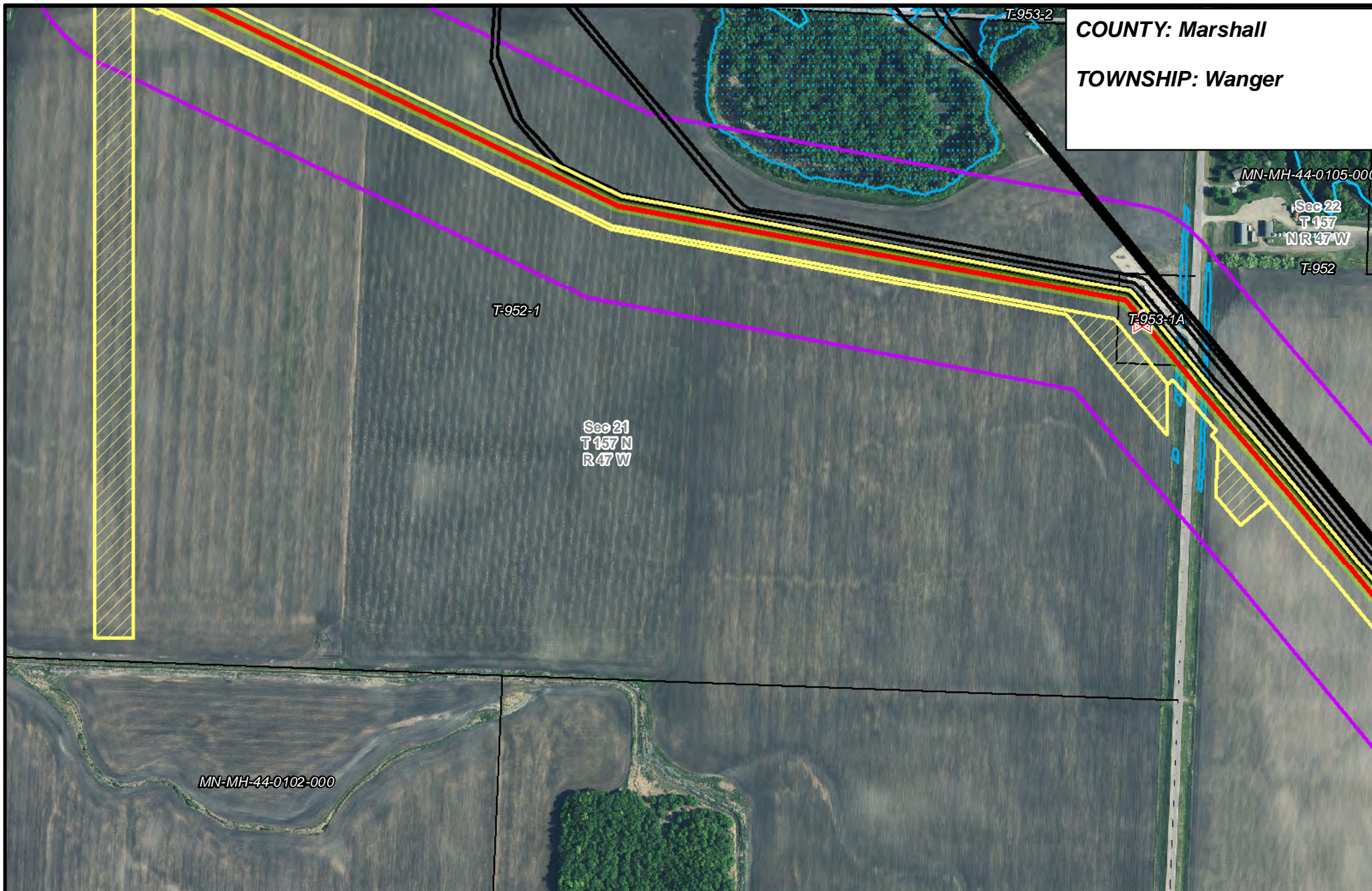
- PUC Designated Route
- ROW
- Line 3R Pipeline
- Valve Location
- Enbridge Pump Station
- Mile Post
- Temporary Workspace
- Additional Temporary Workspace
- Existing Enbridge Pipelines
- Existing Electric Transmission
- Existing Third Party Pipelines
- Surveyed Waterbodies
- ESA
- Surveyed Wetlands
- NWI Wetlands
- Tract Boundary
- MN Section Boundary
- Township/City Boundary
- County Boundary



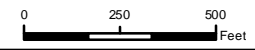
LINE 3 REPLACEMENT PIPELINE ROUTE

DRAWN: MLB CHECKED: --
DATE: August 31, 2018 SCALE: 1:5,000
Map 34 of 378

COUNTY: Marshall
TOWNSHIP: Wanger



- | | | | |
|-----------------------|--------------------------------|----------------------|------------------------|
| PUC Designated Route | Mile Post | Surveyed Waterbodies | Tract Boundary |
| ROW | Temporary Workspace | ESA | MN Section Boundary |
| Line 3R Pipeline | Additional Temporary Workspace | Surveyed Wetlands | Township/City Boundary |
| Valve Location | Existing Enbridge Pipelines | NWI Wetlands | County Boundary |
| Enbridge Pump Station | Existing Electric Transmission | | |
| | Existing Third Party Pipelines | | |



LINE 3 REPLACEMENT PIPELINE ROUTE

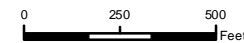
DRAWN: MLB CHECKED: --
 DATE: August 31, 2018 SCALE: 1:5,000
 Map 35 of 378

COUNTY: Marshall

TOWNSHIP: Wanger



- | | | | |
|-----------------------|--------------------------------|----------------------|------------------------|
| PUC Designated Route | Mile Post | Surveyed Waterbodies | Tract Boundary |
| ROW | Temporary Workspace | ESA | MN Section Boundary |
| Line 3R Pipeline | Additional Temporary Workspace | Surveyed Wetlands | Township/City Boundary |
| Valve Location | Existing Enbridge Pipelines | NWI Wetlands | County Boundary |
| Enbridge Pump Station | Existing Electric Transmission | | |
| | Existing Third Party Pipelines | | |

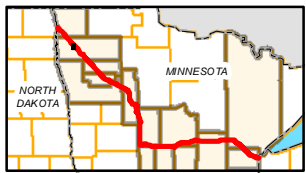


LINE 3 REPLACEMENT PIPELINE ROUTE

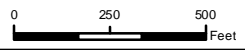
DRAWN: MLB CHECKED: --
DATE: August 31, 2018 SCALE: 1:5,000
Map 36 of 378

COUNTY: Marshall

TOWNSHIP: Wanger



- | | | | |
|-----------------------|--------------------------------|----------------------|------------------------|
| PUC Designated Route | Mile Post | Surveyed Waterbodies | Tract Boundary |
| ROW | Temporary Workspace | ESA | MN Section Boundary |
| Line 3R Pipeline | Additional Temporary Workspace | Surveyed Wetlands | Township/City Boundary |
| Valve Location | Existing Enbridge Pipelines | NWI Wetlands | County Boundary |
| Enbridge Pump Station | Existing Electric Transmission | | |
| | Existing Third Party Pipelines | | |

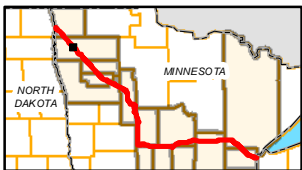
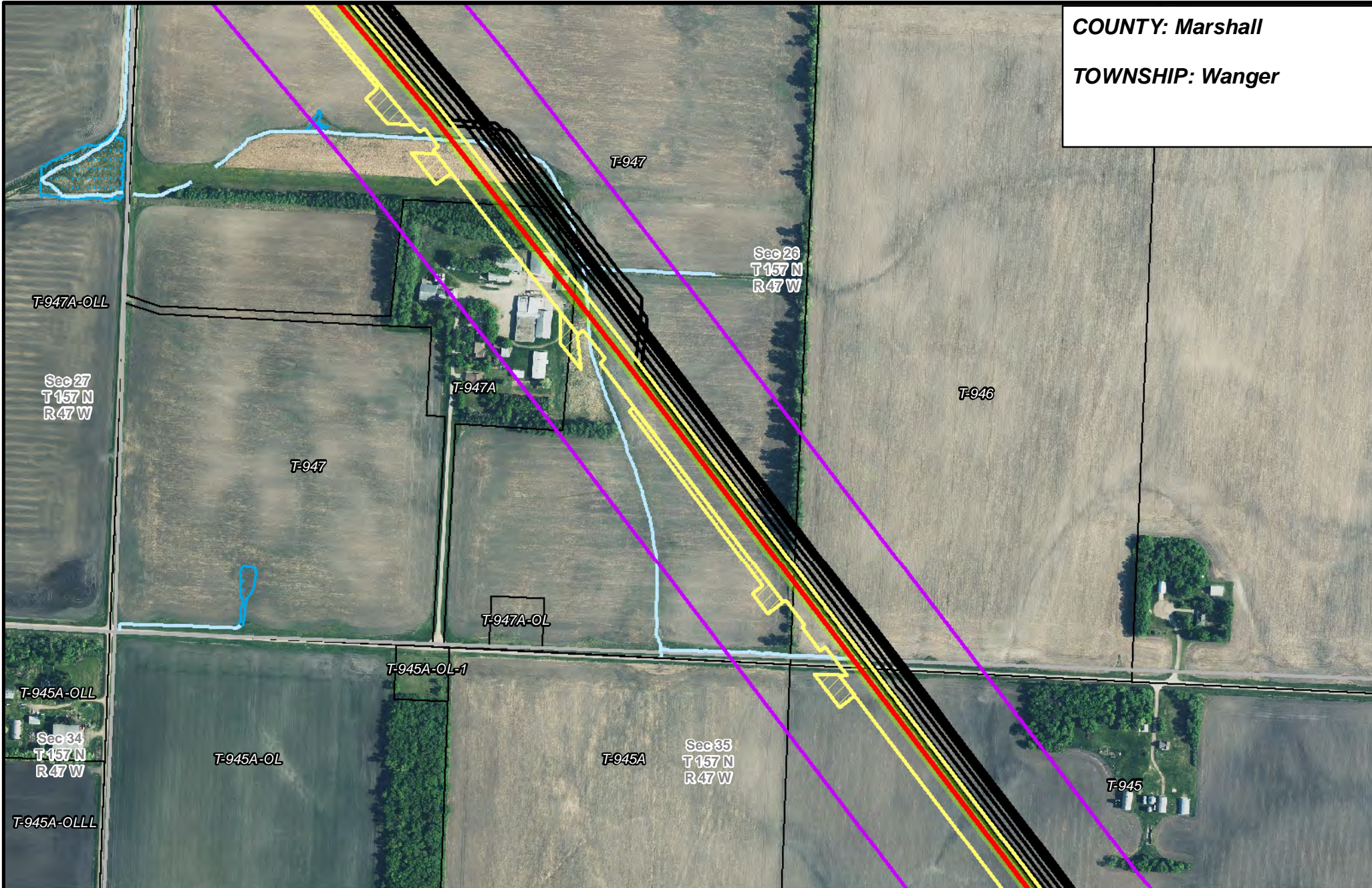


LINE 3 REPLACEMENT PIPELINE ROUTE

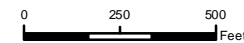
DRAWN: MLB CHECKED: --
 DATE: August 31, 2018 SCALE: 1:5,000
 Map 37 of 378

COUNTY: Marshall

TOWNSHIP: Wanger



- | | | | |
|-----------------------|--------------------------------|----------------------|------------------------|
| PUC Designated Route | Mile Post | Surveyed Waterbodies | Tract Boundary |
| ROW | Temporary Workspace | ESA | MN Section Boundary |
| Line 3R Pipeline | Additional Temporary Workspace | Surveyed Wetlands | Township/City Boundary |
| Valve Location | Existing Enbridge Pipelines | NWI Wetlands | County Boundary |
| Enbridge Pump Station | Existing Electric Transmission | | |
| | Existing Third Party Pipelines | | |

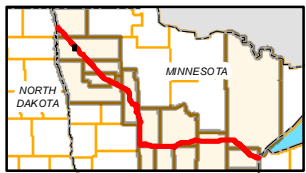
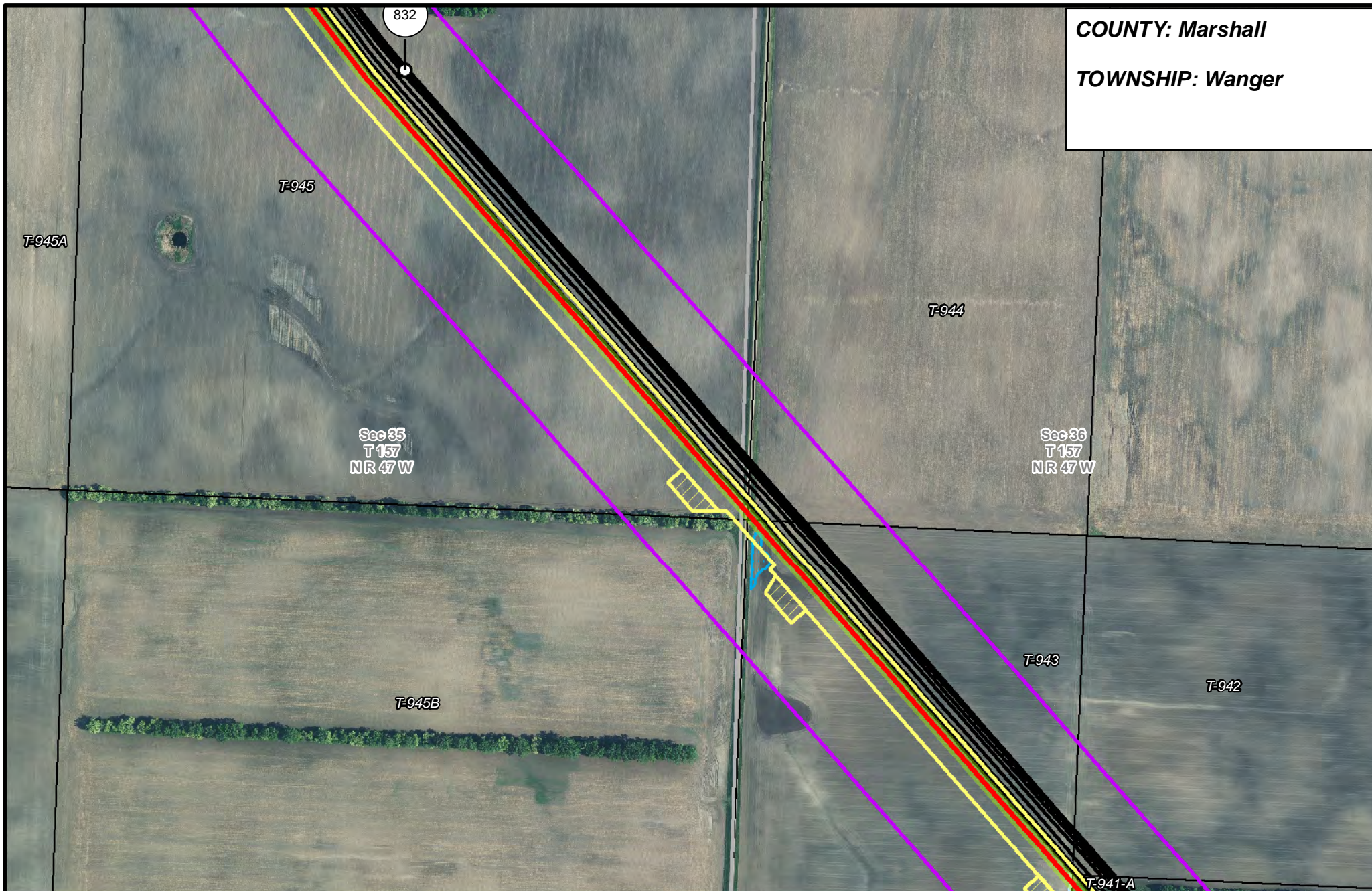


LINE 3 REPLACEMENT PIPELINE ROUTE

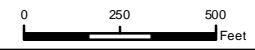
DRAWN: MLB CHECKED: --
DATE: August 31, 2018 SCALE: 1:5,000
Map 38 of 378

COUNTY: Marshall

TOWNSHIP: Wanger



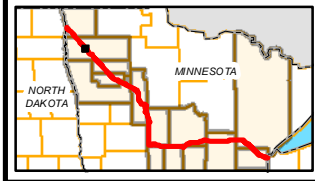
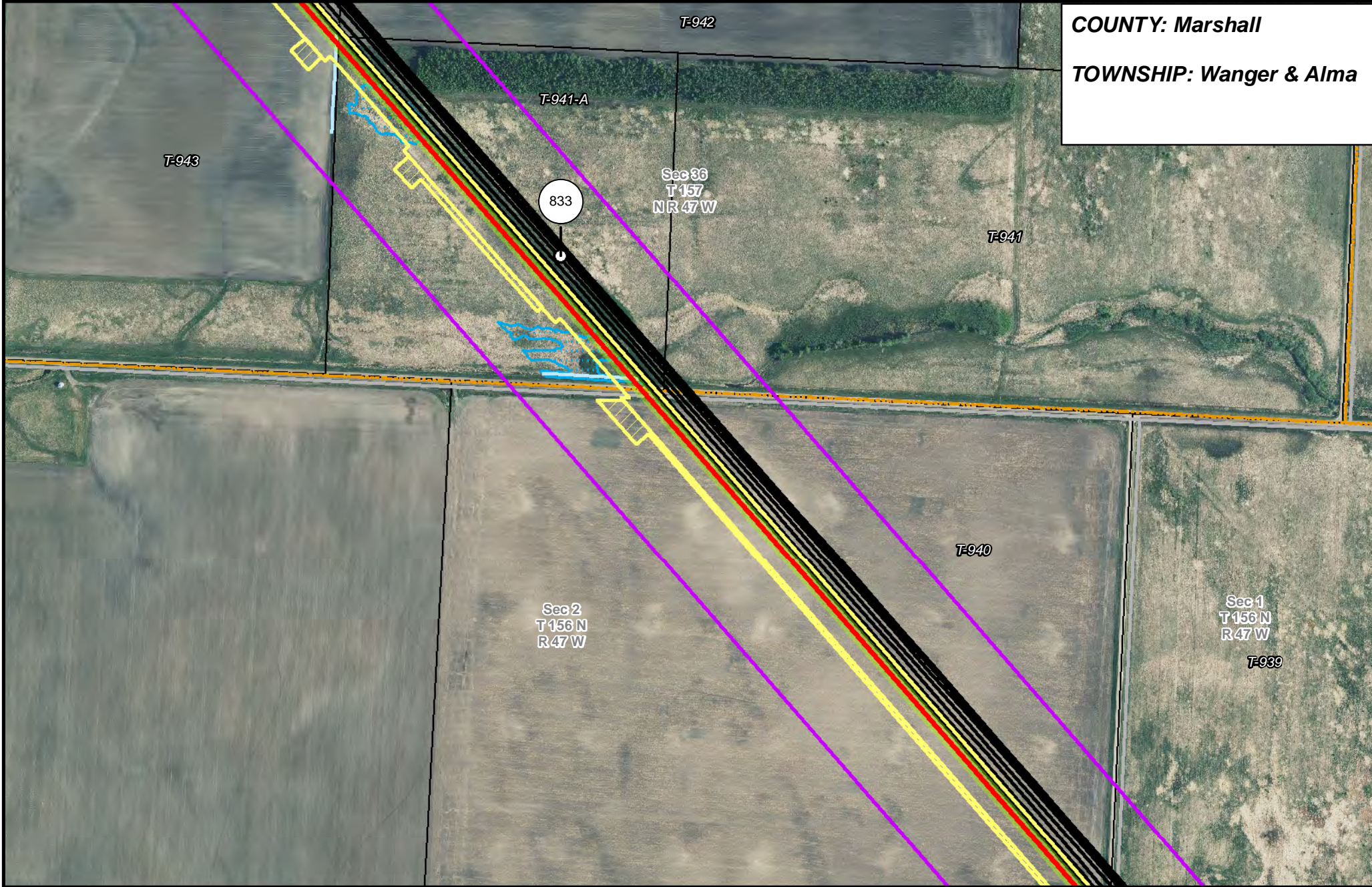
- | | | | |
|-----------------------|--------------------------------|----------------------|------------------------|
| PUC Designated Route | Mile Post | Surveyed Waterbodies | Tract Boundary |
| ROW | Temporary Workspace | ESA | MN Section Boundary |
| Line 3R Pipeline | Additional Temporary Workspace | Surveyed Wetlands | Township/City Boundary |
| Valve Location | Existing Enbridge Pipelines | NWI Wetlands | County Boundary |
| Enbridge Pump Station | Existing Electric Transmission | | |
| | Existing Third Party Pipelines | | |



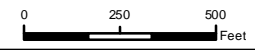
LINE 3 REPLACEMENT PIPELINE ROUTE

DRAWN: MLB CHECKED: --
DATE: August 31, 2018 SCALE: 1:5,000
Map 39 of 378

COUNTY: Marshall
TOWNSHIP: Wanger & Alma



- | | | | |
|-----------------------|--------------------------------|----------------------|------------------------|
| PUC Designated Route | Mile Post | Surveyed Waterbodies | Tract Boundary |
| ROW | Temporary Workspace | ESA | MN Section Boundary |
| Line 3R Pipeline | Additional Temporary Workspace | Surveyed Wetlands | Township/City Boundary |
| Valve Location | Existing Enbridge Pipelines | NWI Wetlands | County Boundary |
| Enbridge Pump Station | Existing Electric Transmission | | |
| | Existing Third Party Pipelines | | |



**LINE 3 REPLACEMENT
 PIPELINE ROUTE**

DRAWN: MLB CHECKED: --
 DATE: August 31, 2018 SCALE: 1:5,000
 Map 40 of 378