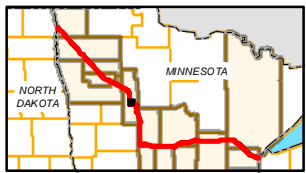
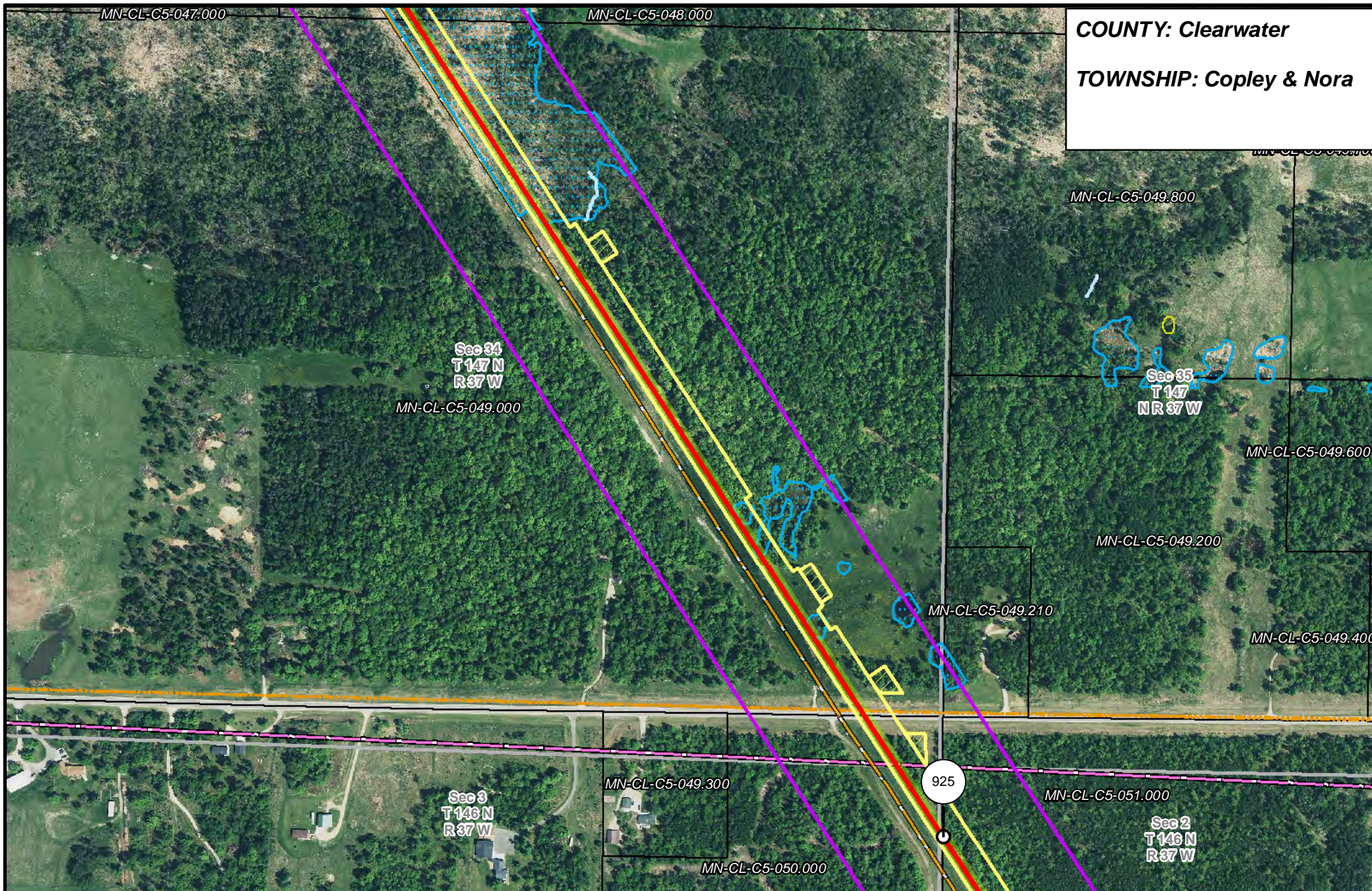
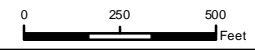


COUNTY: Clearwater
TOWNSHIP: Copley & Nora



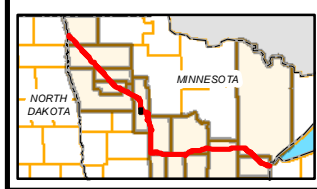
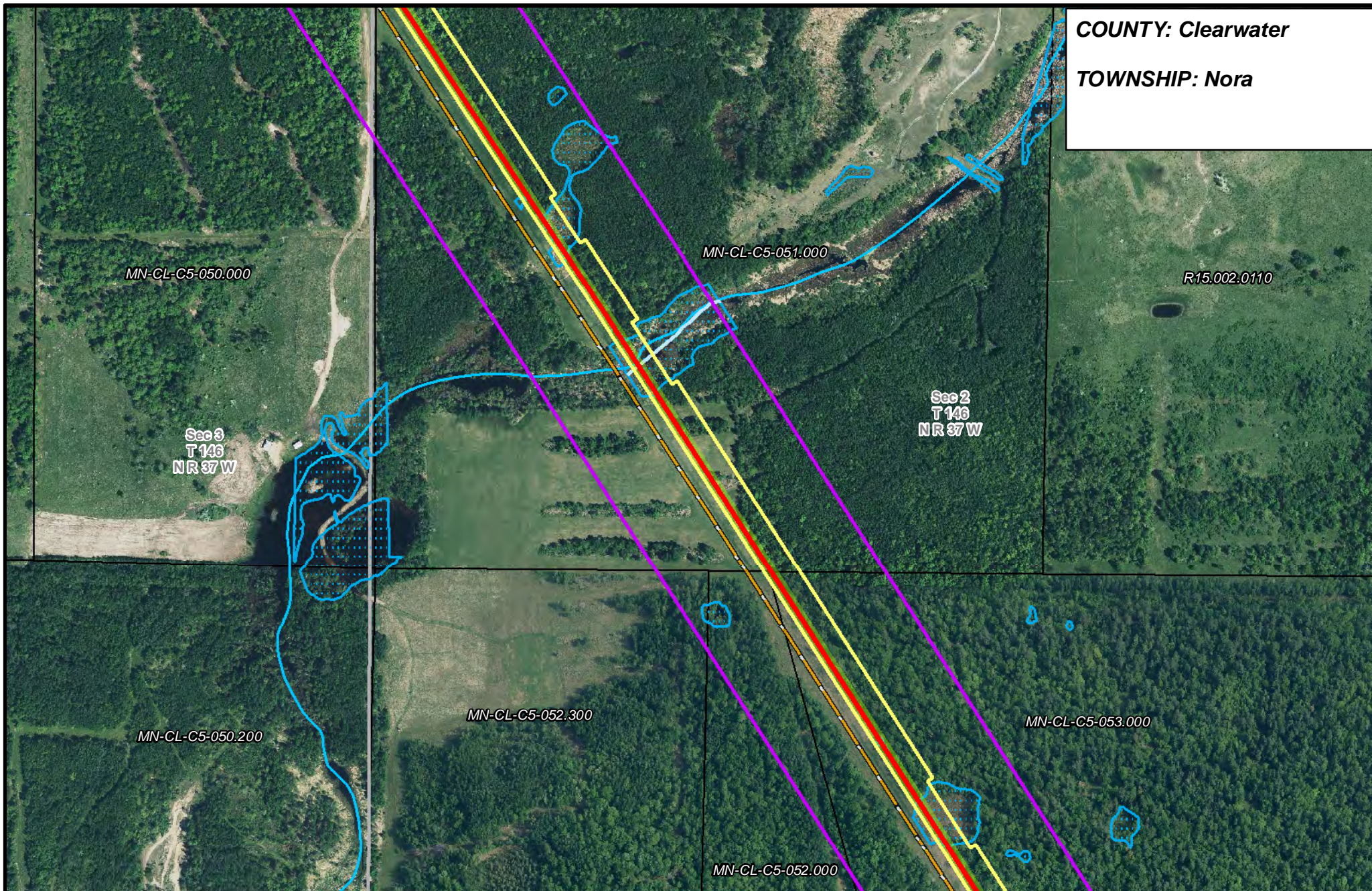
- | | | | |
|-----------------------|--------------------------------|--------------------------------|------------------------|
| PUC Designated Route | Mile Post | Surveyed Waterbodies | Tract Boundary |
| ROW | Temporary Workspace | ESA | MN Section Boundary |
| Line 3R Pipeline | Additional Temporary Workspace | Surveyed Wetlands | Township/City Boundary |
| Valve Location | Existing Enbridge Pipelines | NWI Wetlands | County Boundary |
| Enbridge Pump Station | Existing Electric Transmission | Existing Third Party Pipelines | |



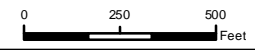
**LINE 3 REPLACEMENT
 PIPELINE ROUTE**

DRAWN: MLB CHECKED: --
 DATE: August 31, 2018 SCALE: 1:5,000
 Map 148 of 378

COUNTY: Clearwater
TOWNSHIP: Nora



- | | | | |
|-----------------------|--------------------------------|----------------------|------------------------|
| PUC Designated Route | Mile Post | Surveyed Waterbodies | Tract Boundary |
| ROW | Temporary Workspace | ESA | MN Section Boundary |
| Line 3R Pipeline | Additional Temporary Workspace | Surveyed Wetlands | Township/City Boundary |
| Valve Location | Existing Enbridge Pipelines | NWI Wetlands | County Boundary |
| Enbridge Pump Station | Existing Electric Transmission | | |
| | Existing Third Party Pipelines | | |

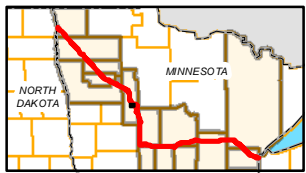
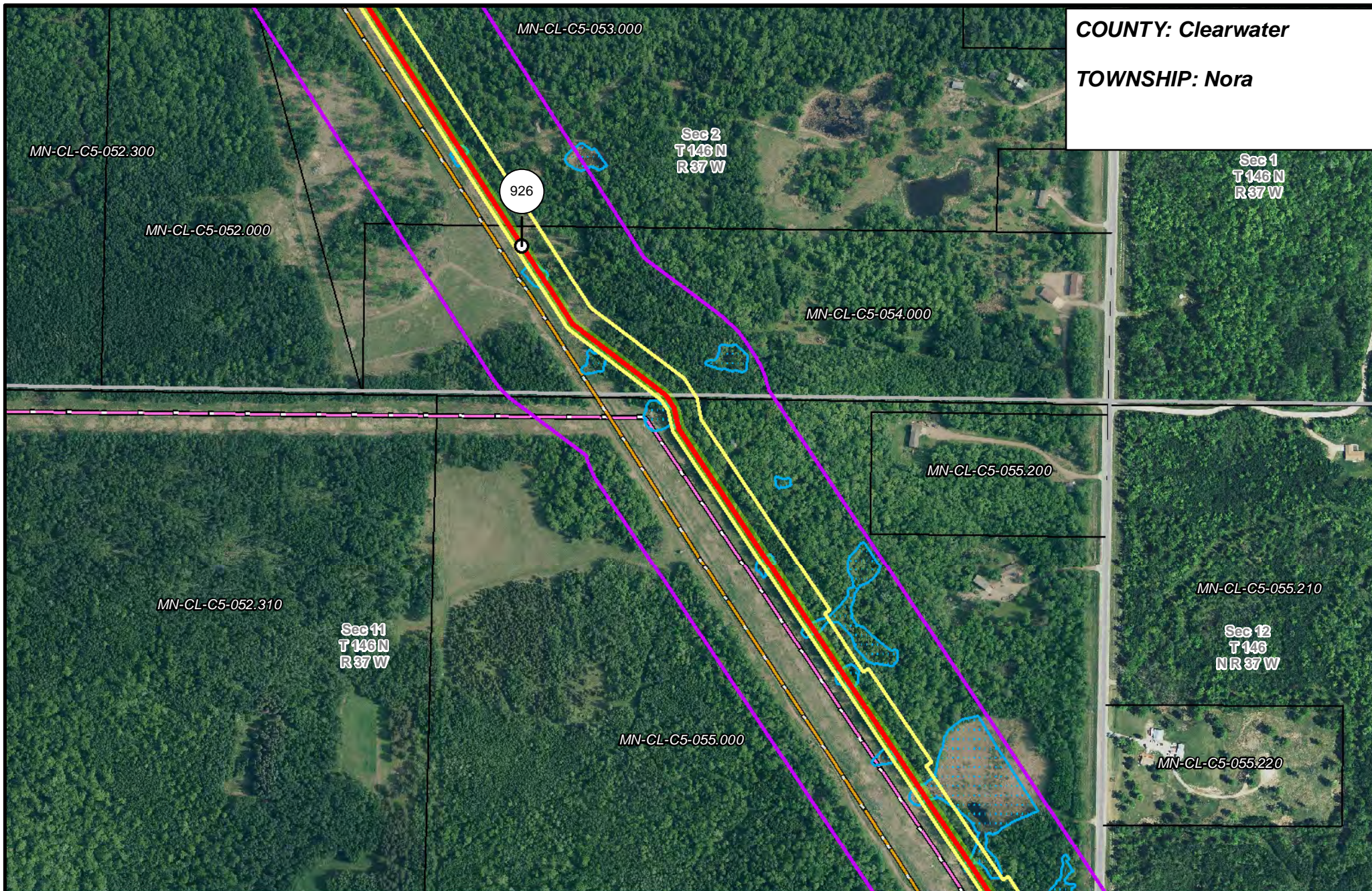


LINE 3 REPLACEMENT PIPELINE ROUTE

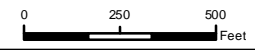
DRAWN: MLB CHECKED: --
 DATE: August 31, 2018 SCALE: 1:5,000

Map 149 of 378

COUNTY: Clearwater
TOWNSHIP: Nora



- | | | | |
|-----------------------|--------------------------------|----------------------|------------------------|
| PUC Designated Route | Mile Post | Surveyed Waterbodies | Tract Boundary |
| ROW | Temporary Workspace | ESA | MN Section Boundary |
| Line 3R Pipeline | Additional Temporary Workspace | Surveyed Wetlands | Township/City Boundary |
| Valve Location | Existing Enbridge Pipelines | NWI Wetlands | County Boundary |
| Enbridge Pump Station | Existing Electric Transmission | | |
| | Existing Third Party Pipelines | | |

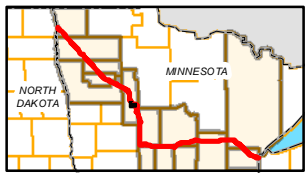
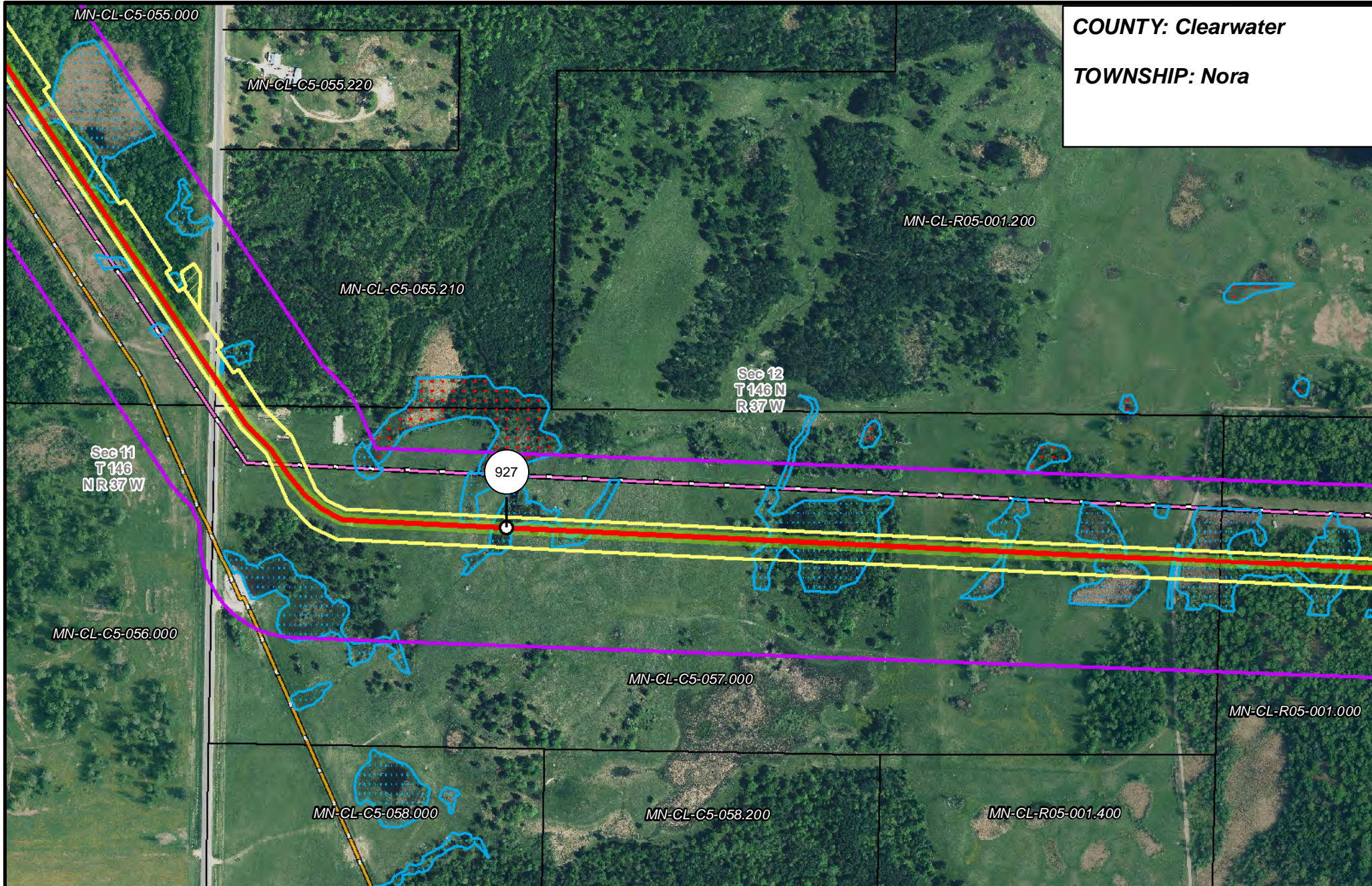


**LINE 3 REPLACEMENT
PIPELINE ROUTE**

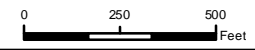
DRAWN: MLB CHECKED: --
DATE: August 31, 2018 SCALE: 1:5,000
Map 150 of 378

COUNTY: Clearwater

TOWNSHIP: Nora



- PUC Designated Route
- ROW
- Line 3R Pipeline
- Valve Location
- Enbridge Pump Station
- Mile Post
- Temporary Workspace
- Additional Temporary Workspace
- Existing Enbridge Pipelines
- Existing Electric Transmission
- Existing Third Party Pipelines
- Surveyed Waterbodies
- ESA
- Surveyed Wetlands
- NWI Wetlands
- Tract Boundary
- MN Section Boundary
- Township/City Boundary
- County Boundary

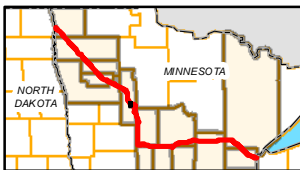
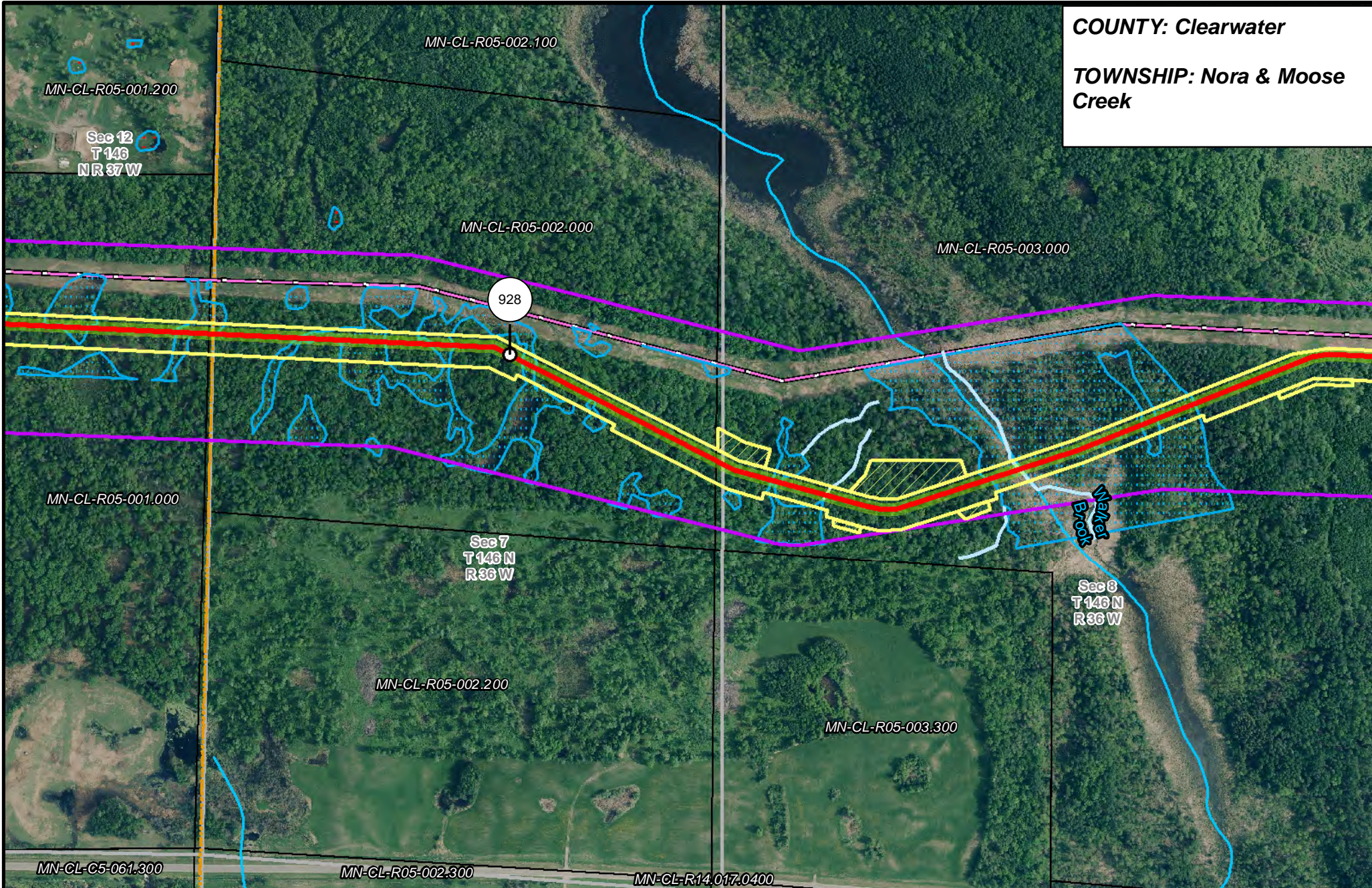


LINE 3 REPLACEMENT PIPELINE ROUTE

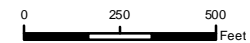
DRAWN: MLB CHECKED: --
DATE: August 31, 2018 SCALE: 1:5,000
Map 151 of 378

COUNTY: Clearwater

TOWNSHIP: Nora & Moose
Creek



- | | | | |
|-----------------------|--------------------------------|----------------------|------------------------|
| PUC Designated Route | Mile Post | Surveyed Waterbodies | Tract Boundary |
| ROW | Temporary Workspace | ESA | MN Section Boundary |
| Line 3R Pipeline | Additional Temporary Workspace | Surveyed Wetlands | Township/City Boundary |
| Valve Location | Existing Enbridge Pipelines | NWI Wetlands | County Boundary |
| Enbridge Pump Station | Existing Electric Transmission | | |
| | Existing Third Party Pipelines | | |

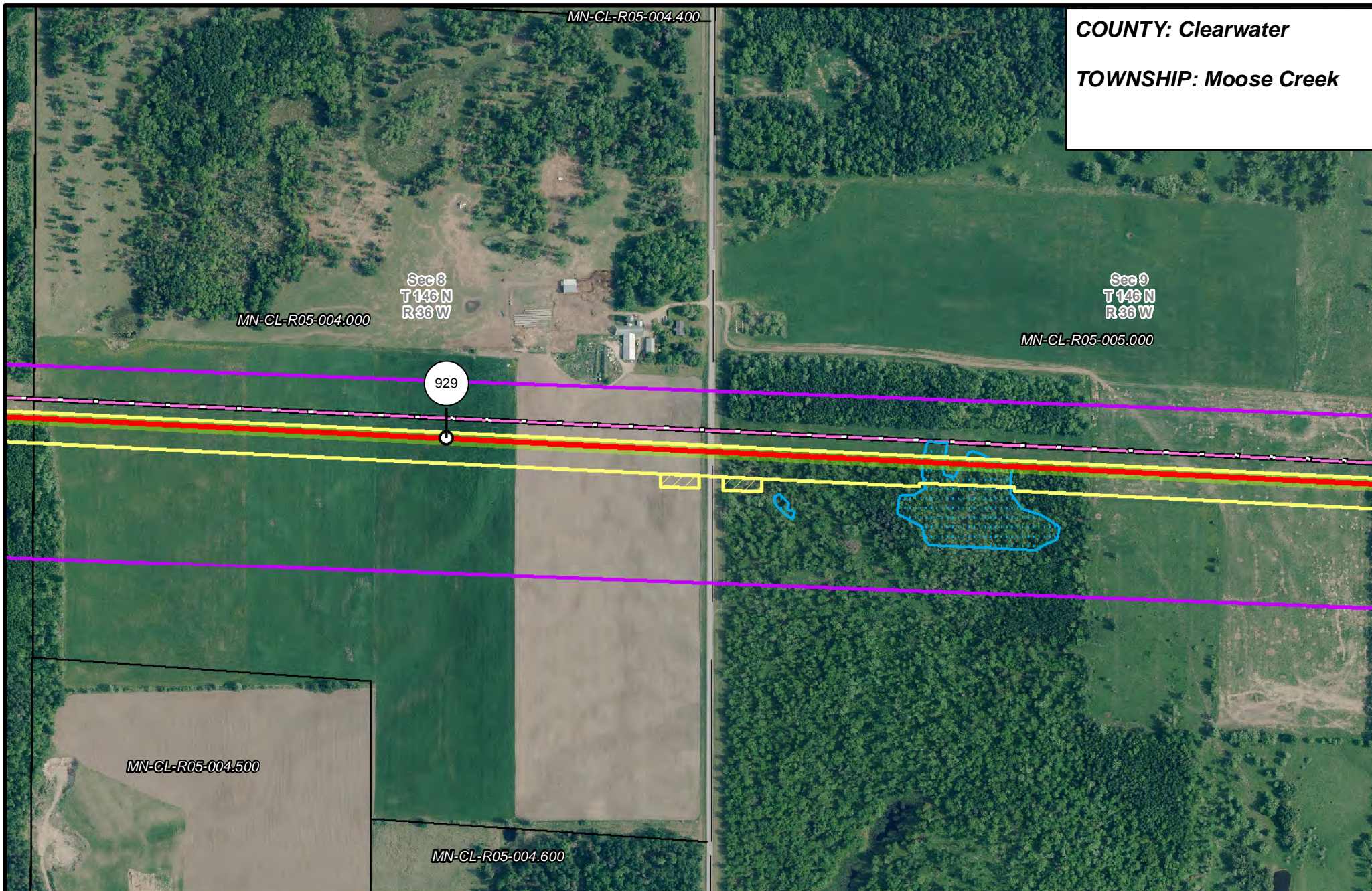


LINE 3 REPLACEMENT PIPELINE ROUTE

DRAWN: MLB CHECKED: --
DATE: August 31, 2018 SCALE: 1:5,000
Map 152 of 378

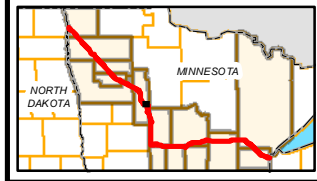
COUNTY: Clearwater

TOWNSHIP: Moose Creek

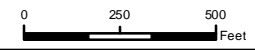


MN-CL-R05-004.500

MN-CL-R05-004.600



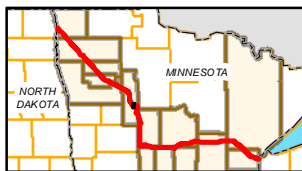
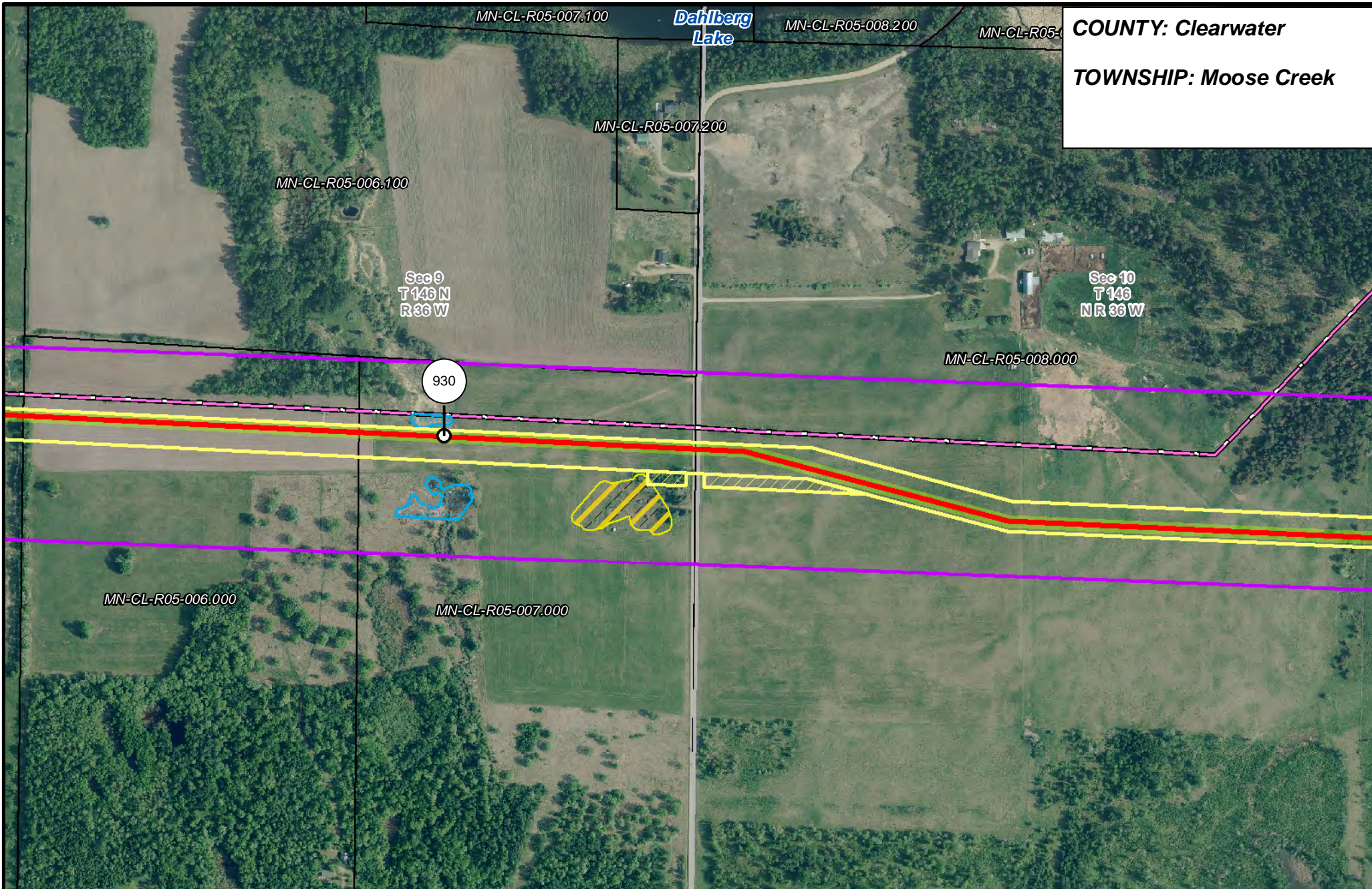
- PUC Designated Route
- ROW
- Line 3R Pipeline
- Valve Location
- Enbridge Pump Station
- Mile Post
- Temporary Workspace
- Additional Temporary Workspace
- Existing Enbridge Pipelines
- Existing Electric Transmission
- Existing Third Party Pipelines
- Surveyed Waterbodies
- ESA
- Surveyed Wetlands
- NWI Wetlands
- Tract Boundary
- MN Section Boundary
- Township/City Boundary
- County Boundary



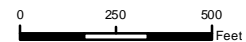
LINE 3 REPLACEMENT PIPELINE ROUTE

DRAWN: MLB CHECKED: --
DATE: August 31, 2018 SCALE: 1:5,000
Map 153 of 378

COUNTY: Clearwater
TOWNSHIP: Moose Creek



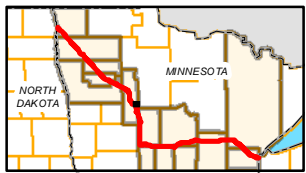
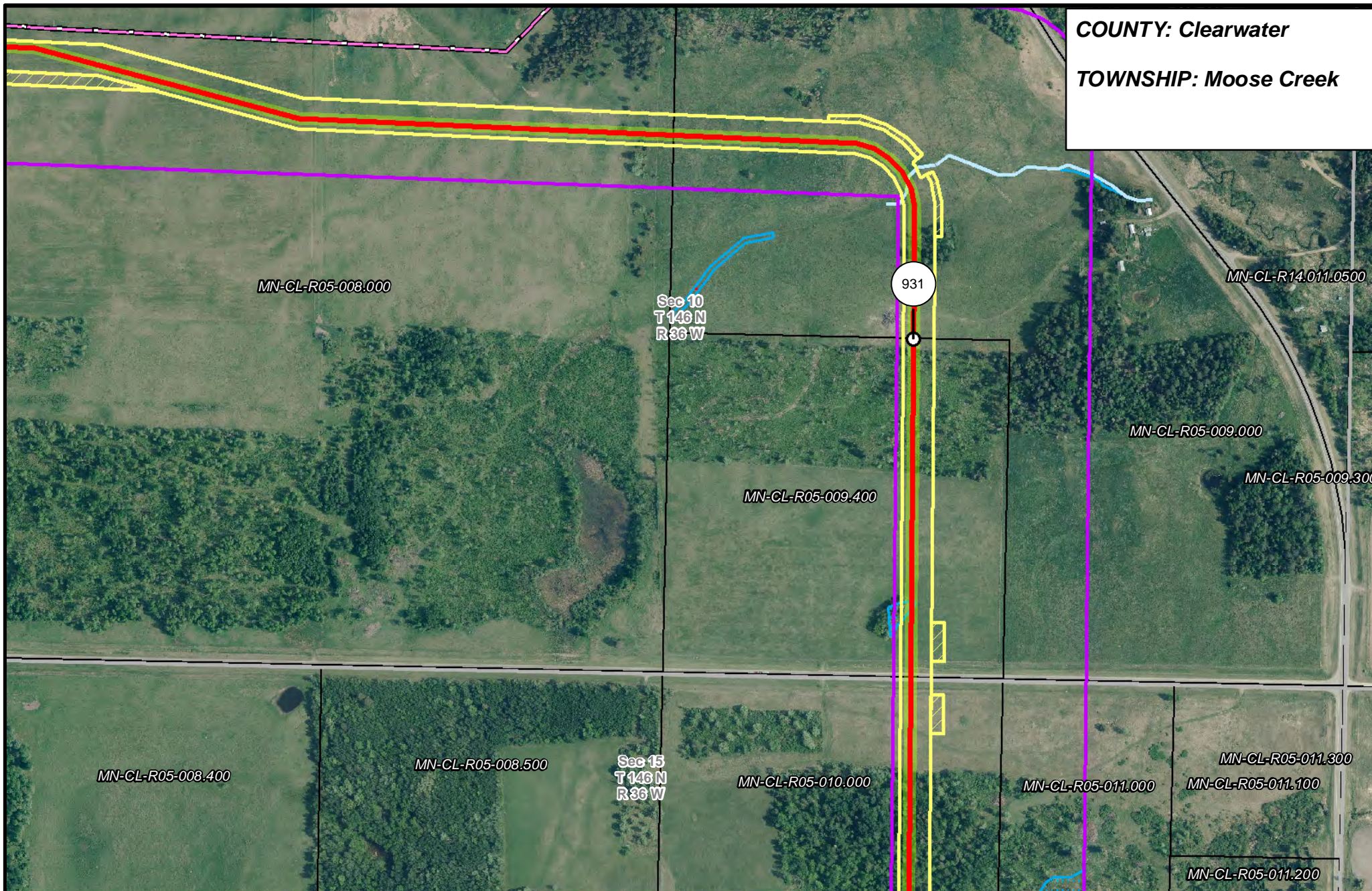
- | | | | |
|-----------------------|--------------------------------|----------------------|------------------------|
| PUC Designated Route | Mile Post | Surveyed Waterbodies | Tract Boundary |
| ROW | Temporary Workspace | ESA | MN Section Boundary |
| Line 3R Pipeline | Additional Temporary Workspace | Surveyed Wetlands | Township/City Boundary |
| Valve Location | Existing Enbridge Pipelines | NWI Wetlands | County Boundary |
| Enbridge Pump Station | Existing Electric Transmission | | |
| | Existing Third Party Pipelines | | |



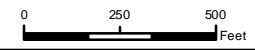
**LINE 3 REPLACEMENT
PIPELINE ROUTE**

DRAWN: MLB CHECKED: --
DATE: August 31, 2018 SCALE: 1:5,000
Map 154 of 378

COUNTY: Clearwater
TOWNSHIP: Moose Creek



- | | | | |
|-----------------------|--------------------------------|----------------------|------------------------|
| PUC Designated Route | Mile Post | Surveyed Waterbodies | Tract Boundary |
| ROW | Temporary Workspace | ESA | MN Section Boundary |
| Line 3R Pipeline | Additional Temporary Workspace | Surveyed Wetlands | Township/City Boundary |
| Valve Location | Existing Enbridge Pipelines | NWI Wetlands | County Boundary |
| Enbridge Pump Station | Existing Electric Transmission | | |
| | Existing Third Party Pipelines | | |

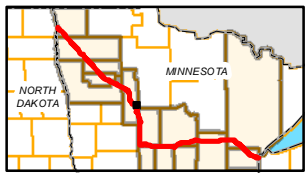
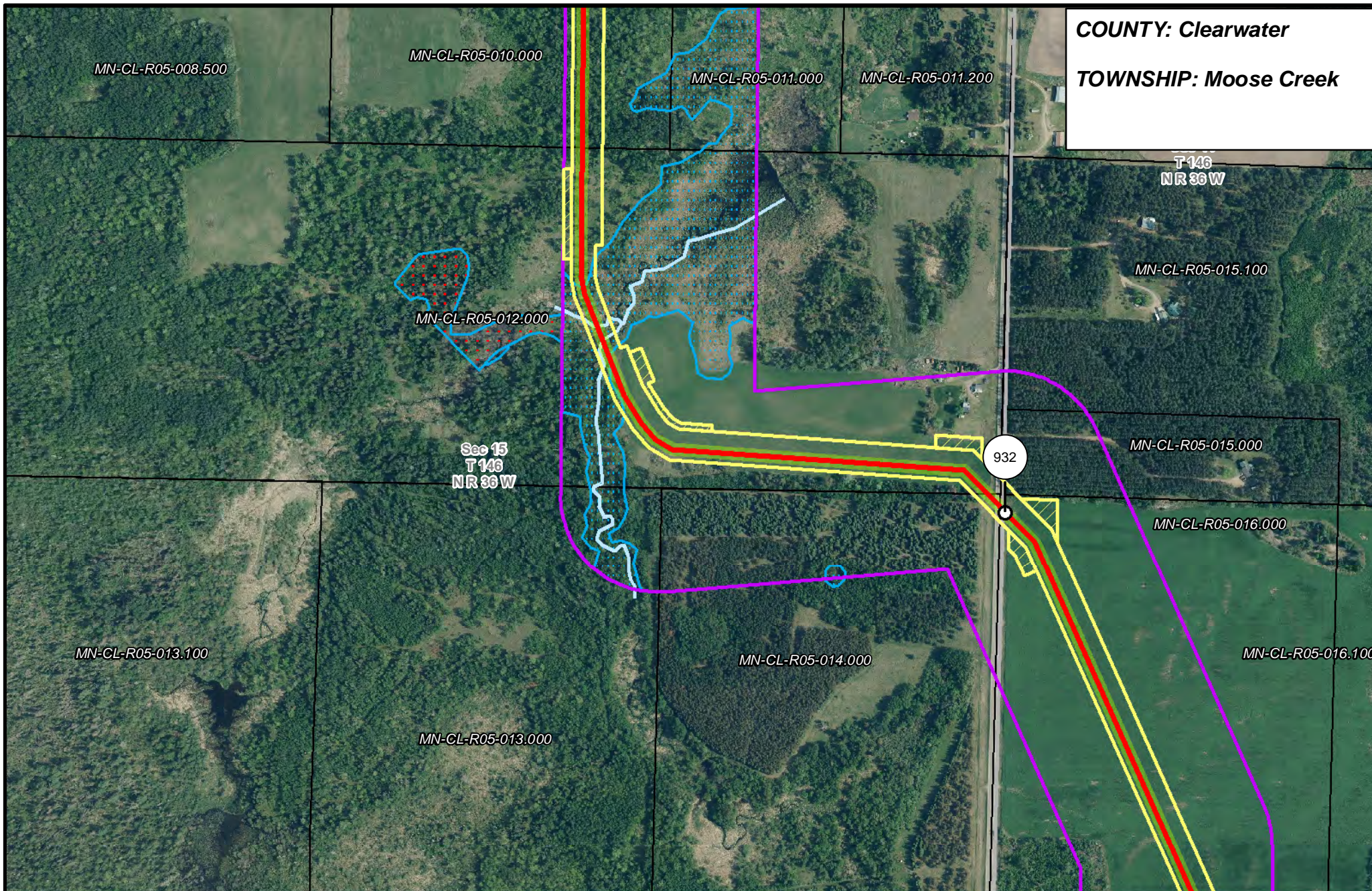


LINE 3 REPLACEMENT PIPELINE ROUTE

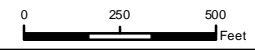
DRAWN: MLB CHECKED: --
 DATE: August 31, 2018 SCALE: 1:5,000

Map 155 of 378

COUNTY: Clearwater
TOWNSHIP: Moose Creek



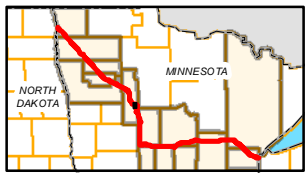
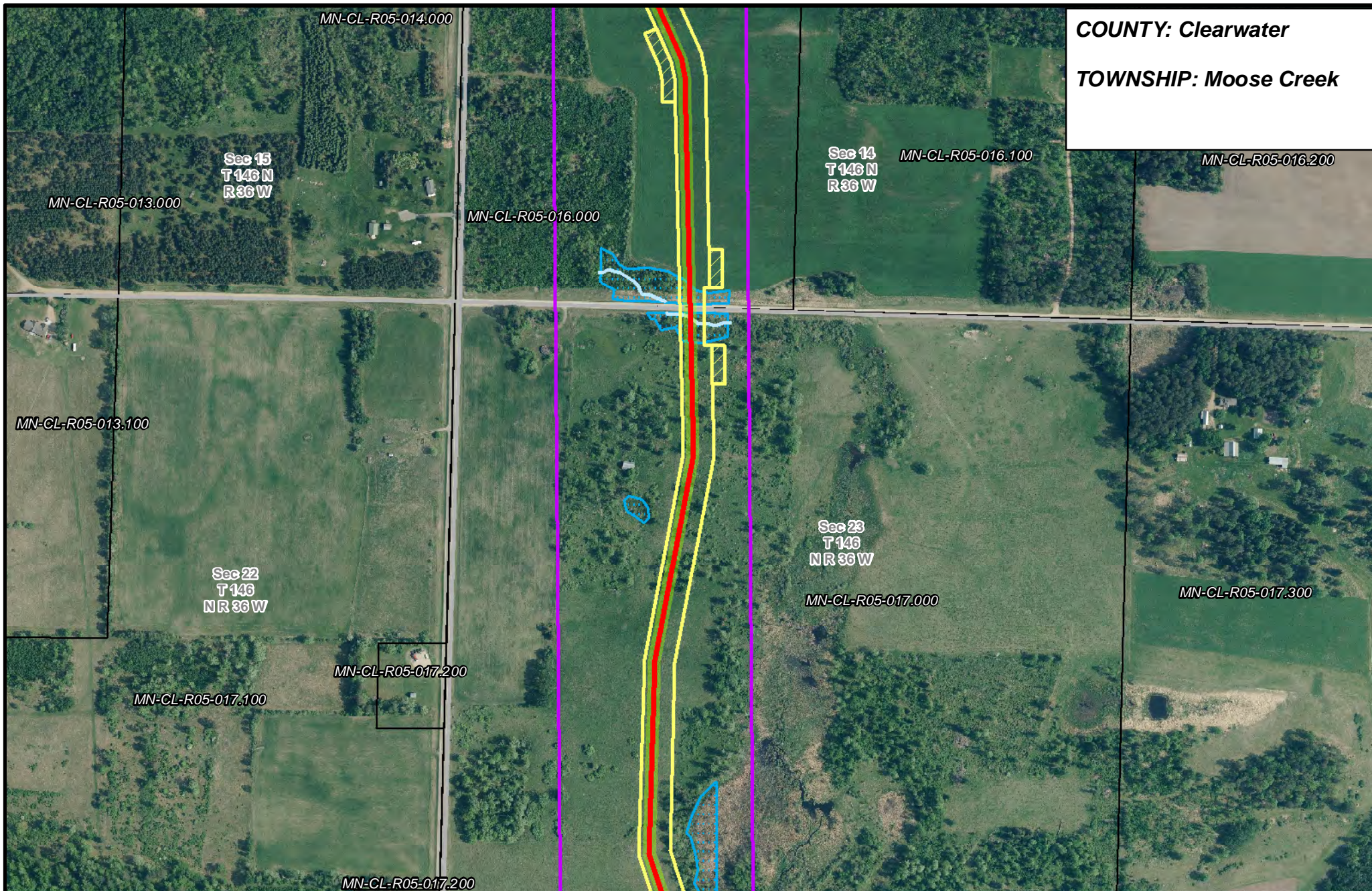
- | | | | |
|-----------------------|--------------------------------|----------------------|------------------------|
| PUC Designated Route | Mile Post | Surveyed Waterbodies | Tract Boundary |
| ROW | Temporary Workspace | ESA | MN Section Boundary |
| Line 3R Pipeline | Additional Temporary Workspace | Surveyed Wetlands | Township/City Boundary |
| Valve Location | Existing Enbridge Pipelines | NWI Wetlands | County Boundary |
| Enbridge Pump Station | Existing Electric Transmission | | |
| | Existing Third Party Pipelines | | |



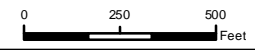
LINE 3 REPLACEMENT PIPELINE ROUTE

DRAWN: MLB CHECKED: --
 DATE: August 31, 2018 SCALE: 1:5,000
 Map 156 of 378

COUNTY: Clearwater
TOWNSHIP: Moose Creek



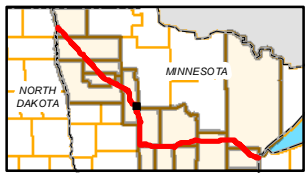
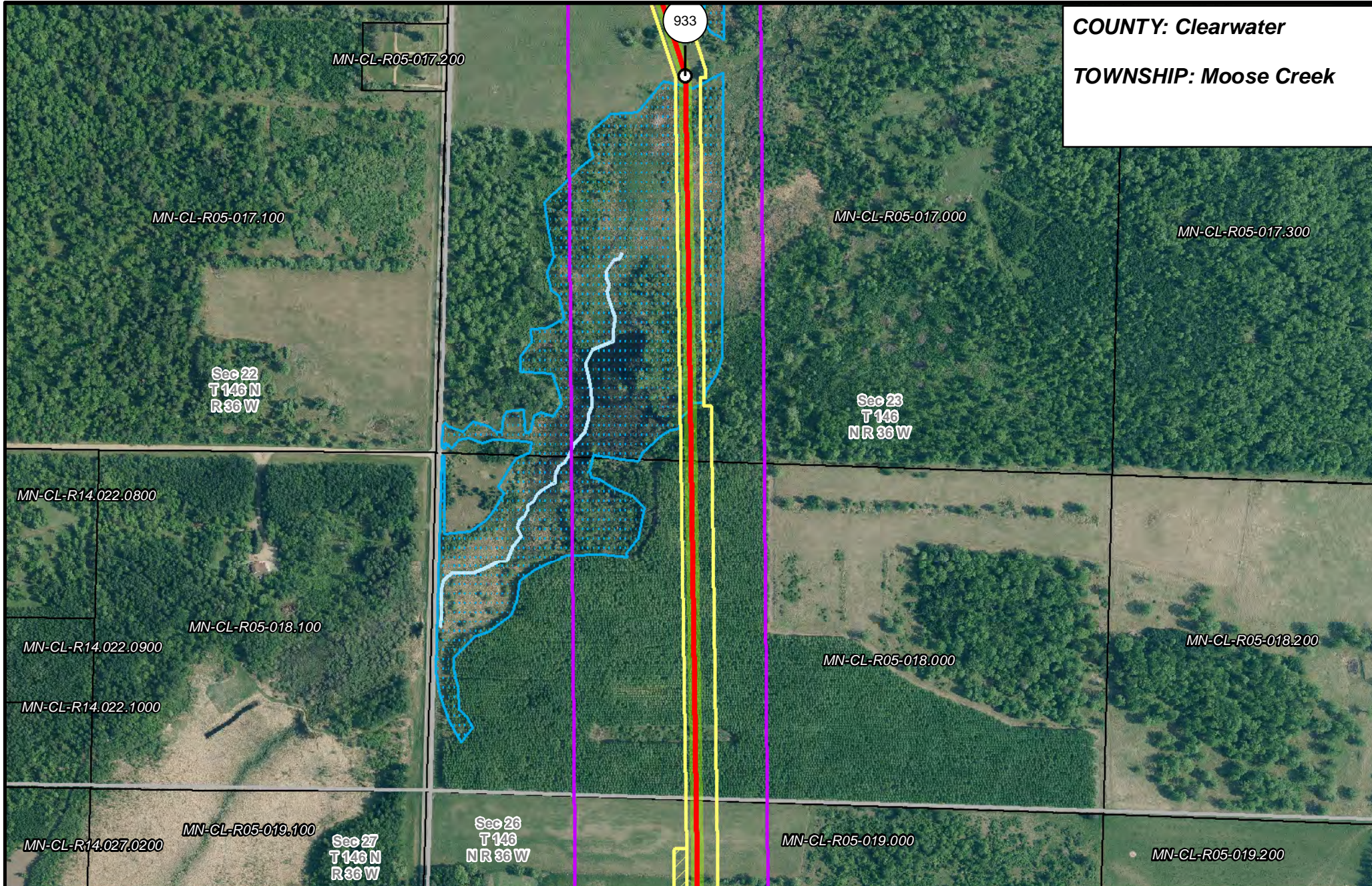
- | | | | |
|-----------------------|--------------------------------|----------------------|------------------------|
| PUC Designated Route | Mile Post | Surveyed Waterbodies | Tract Boundary |
| ROW | Temporary Workspace | ESA | MN Section Boundary |
| Line 3R Pipeline | Additional Temporary Workspace | Surveyed Wetlands | Township/City Boundary |
| Valve Location | Existing Enbridge Pipelines | NWI Wetlands | County Boundary |
| Enbridge Pump Station | Existing Electric Transmission | | |
| | Existing Third Party Pipelines | | |



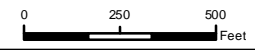
**LINE 3 REPLACEMENT
PIPELINE ROUTE**

DRAWN: MLB CHECKED: --
 DATE: August 31, 2018 SCALE: 1:5,000
 Map 157 of 378

COUNTY: Clearwater
TOWNSHIP: Moose Creek



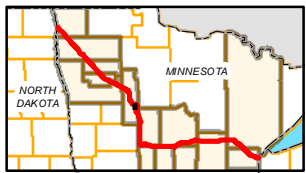
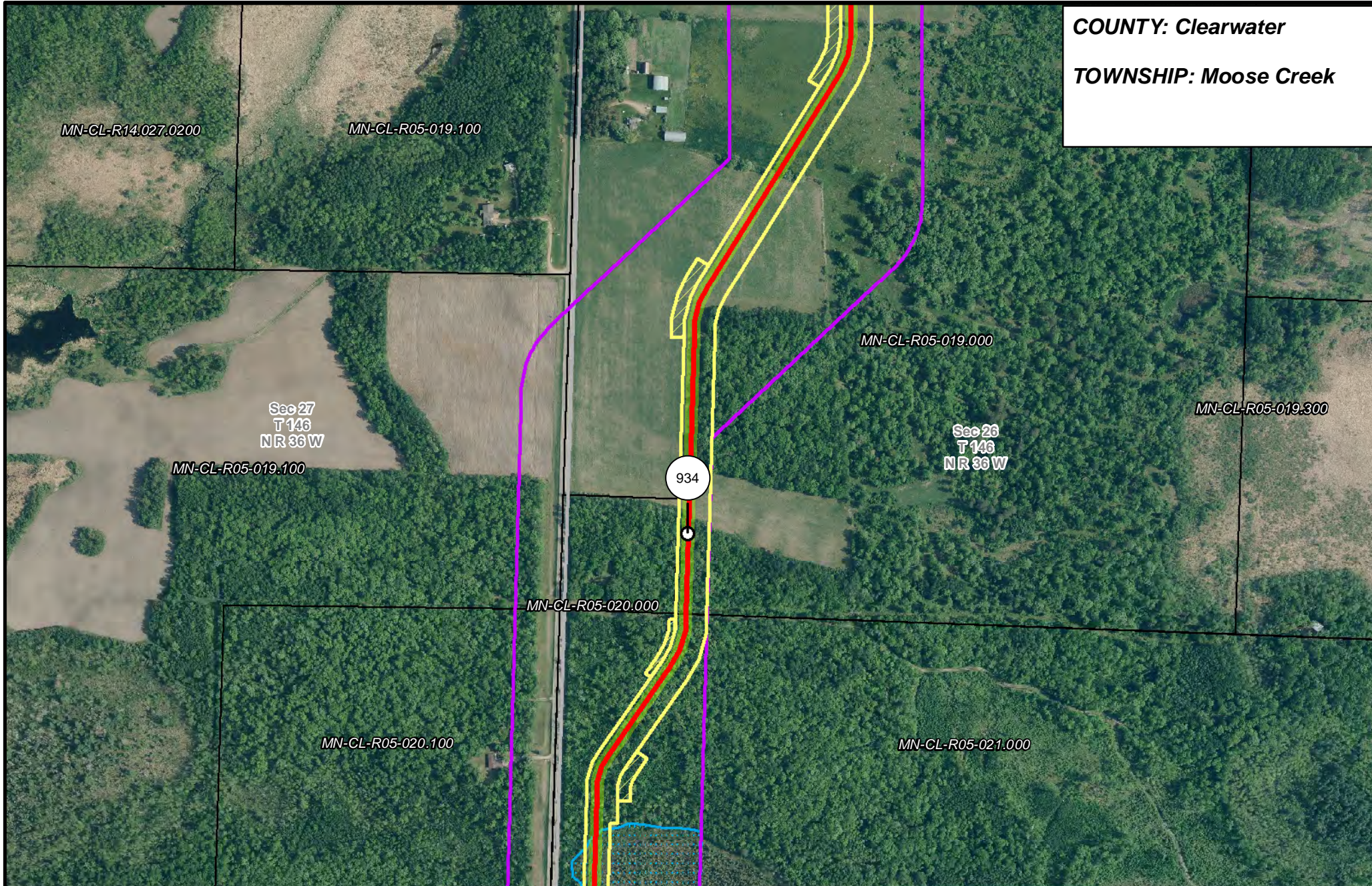
- | | | | |
|-----------------------|--------------------------------|----------------------|------------------------|
| PUC Designated Route | Mile Post | Surveyed Waterbodies | Tract Boundary |
| ROW | Temporary Workspace | ESA | MN Section Boundary |
| Line 3R Pipeline | Additional Temporary Workspace | Surveyed Wetlands | Township/City Boundary |
| Valve Location | Existing Enbridge Pipelines | NWI Wetlands | County Boundary |
| Enbridge Pump Station | Existing Electric Transmission | | |
| | Existing Third Party Pipelines | | |



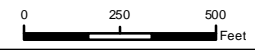
**LINE 3 REPLACEMENT
PIPELINE ROUTE**

DRAWN: MLB CHECKED: --
DATE: August 31, 2018 SCALE: 1:5,000
Map 158 of 378

COUNTY: Clearwater
TOWNSHIP: Moose Creek



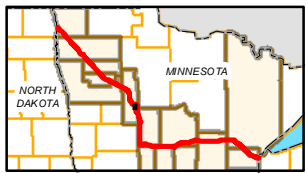
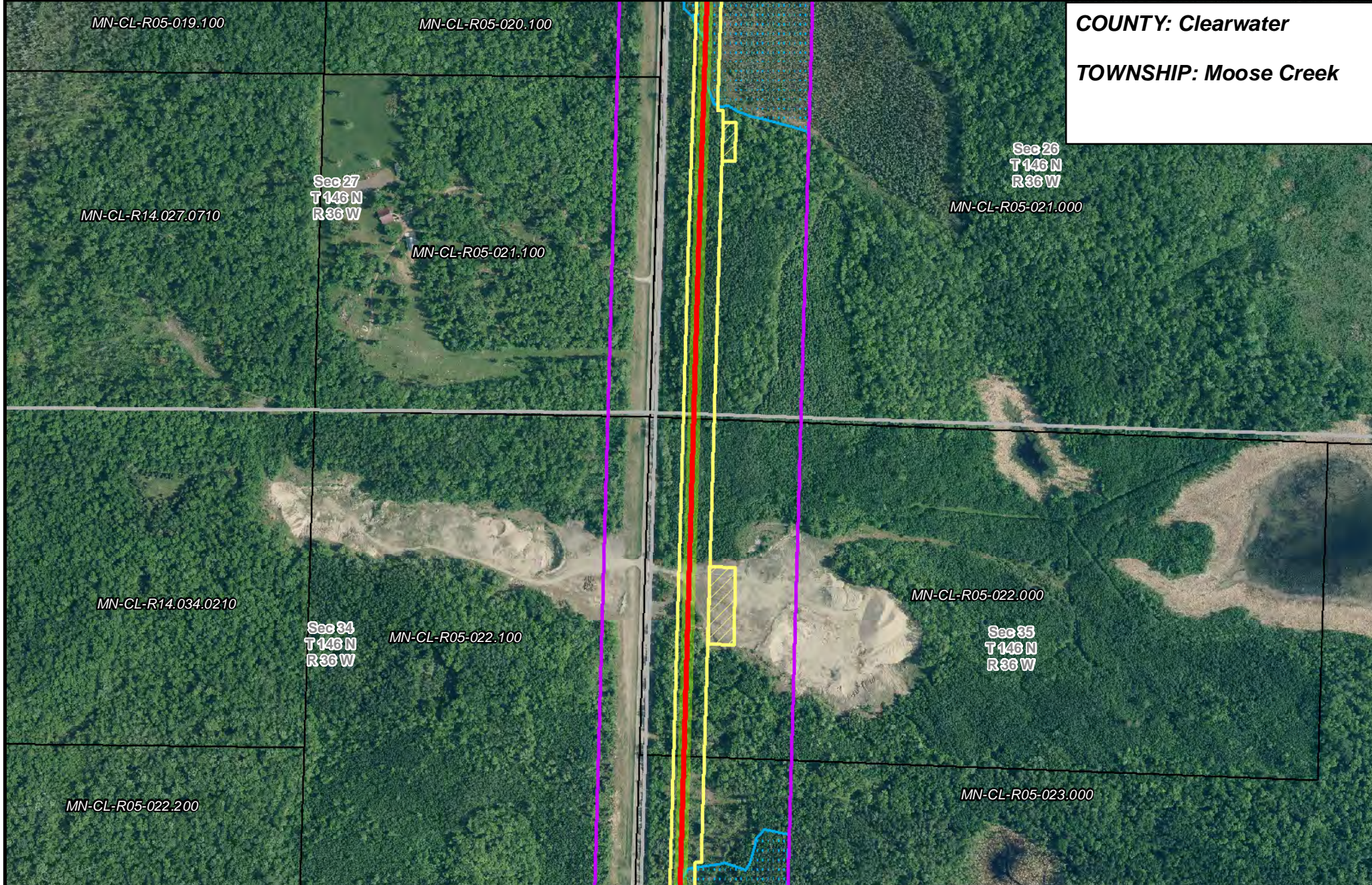
- | | | | |
|-----------------------|--------------------------------|----------------------|------------------------|
| PUC Designated Route | Mile Post | Surveyed Waterbodies | Tract Boundary |
| ROW | Temporary Workspace | ESA | MN Section Boundary |
| Line 3R Pipeline | Additional Temporary Workspace | Surveyed Wetlands | Township/City Boundary |
| Valve Location | Existing Enbridge Pipelines | NWI Wetlands | County Boundary |
| Enbridge Pump Station | Existing Electric Transmission | | |
| | Existing Third Party Pipelines | | |



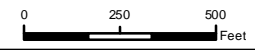
**LINE 3 REPLACEMENT
PIPELINE ROUTE**

DRAWN: MLB CHECKED: --
DATE: August 31, 2018 SCALE: 1:5,000
Map 159 of 378

COUNTY: Clearwater
TOWNSHIP: Moose Creek



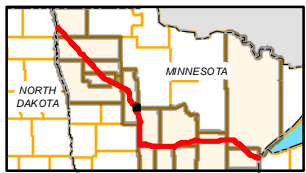
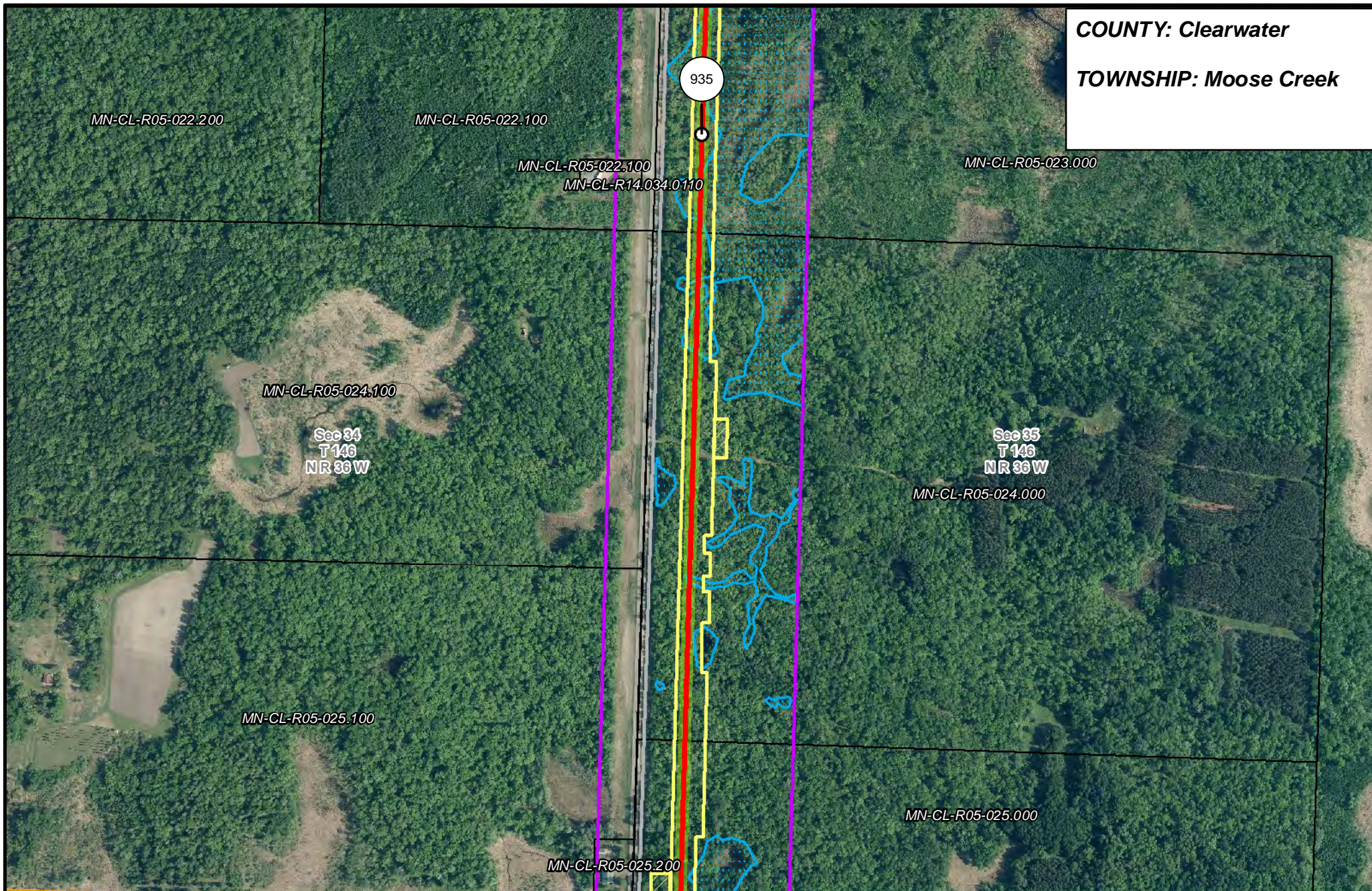
- | | | | |
|-----------------------|--------------------------------|----------------------|------------------------|
| PUC Designated Route | Mile Post | Surveyed Waterbodies | Tract Boundary |
| ROW | Temporary Workspace | ESA | MN Section Boundary |
| Line 3R Pipeline | Additional Temporary Workspace | Surveyed Wetlands | Township/City Boundary |
| Valve Location | Existing Enbridge Pipelines | NWI Wetlands | County Boundary |
| Enbridge Pump Station | Existing Electric Transmission | | |
| | Existing Third Party Pipelines | | |



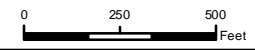
LINE 3 REPLACEMENT PIPELINE ROUTE

DRAWN: MLB CHECKED: --
 DATE: August 31, 2018 SCALE: 1:5,000
 Map 160 of 378

COUNTY: Clearwater
TOWNSHIP: Moose Creek



- | | | | |
|-----------------------|--------------------------------|----------------------|------------------------|
| PUC Designated Route | Mile Post | Surveyed Waterbodies | Tract Boundary |
| ROW | Temporary Workspace | ESA | MN Section Boundary |
| Line 3R Pipeline | Additional Temporary Workspace | Surveyed Wetlands | Township/City Boundary |
| Valve Location | Existing Enbridge Pipelines | NWI Wetlands | County Boundary |
| Enbridge Pump Station | Existing Electric Transmission | | |
| | Existing Third Party Pipelines | | |

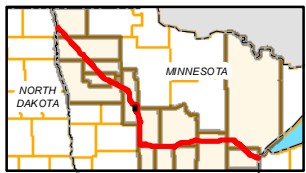
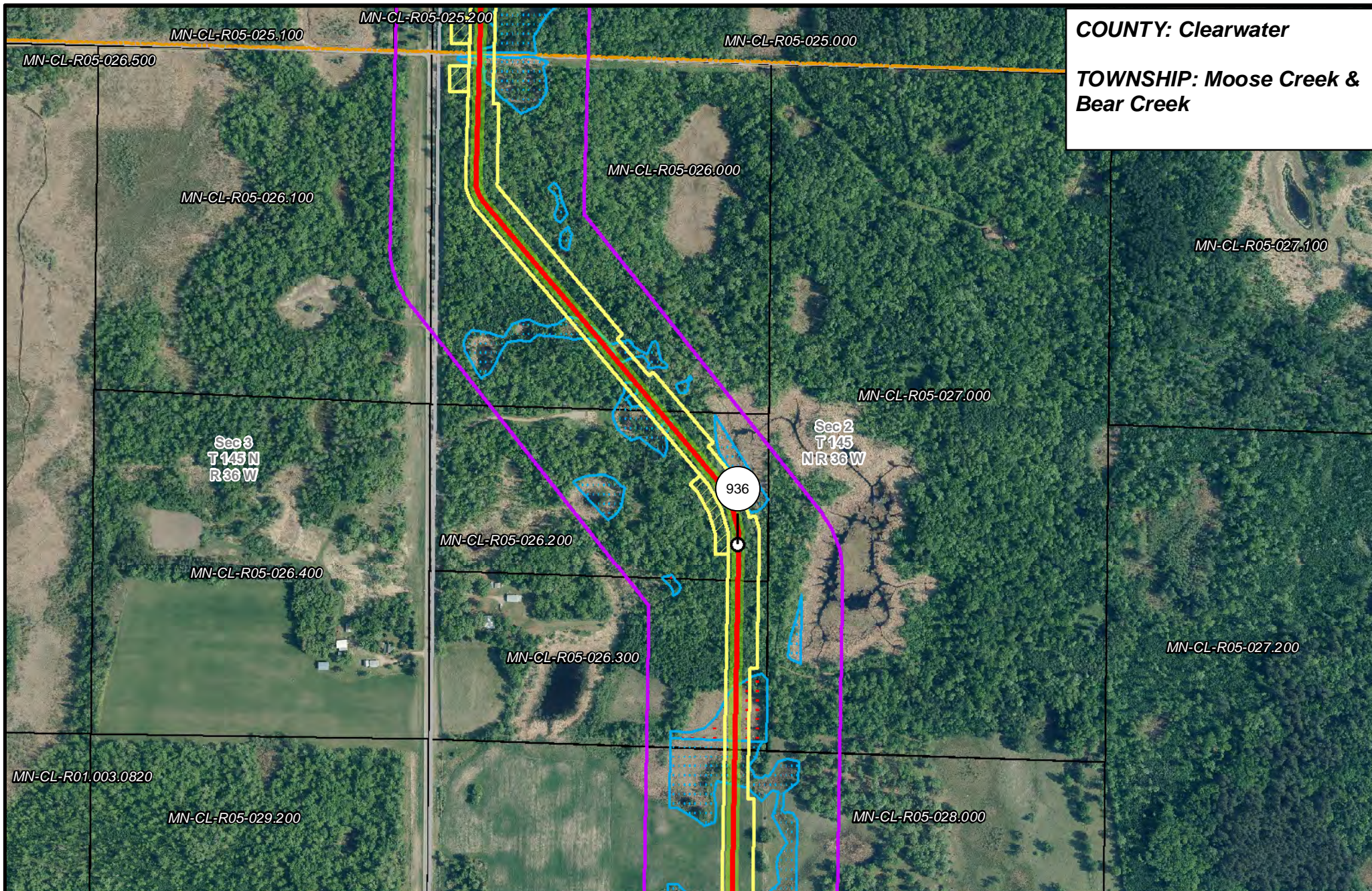


LINE 3 REPLACEMENT PIPELINE ROUTE

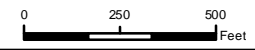
DRAWN: MLB CHECKED: --
 DATE: August 31, 2018 SCALE: 1:5,000

Map 161 of 378

COUNTY: Clearwater
TOWNSHIP: Moose Creek & Bear Creek



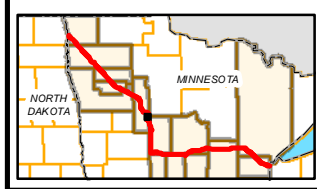
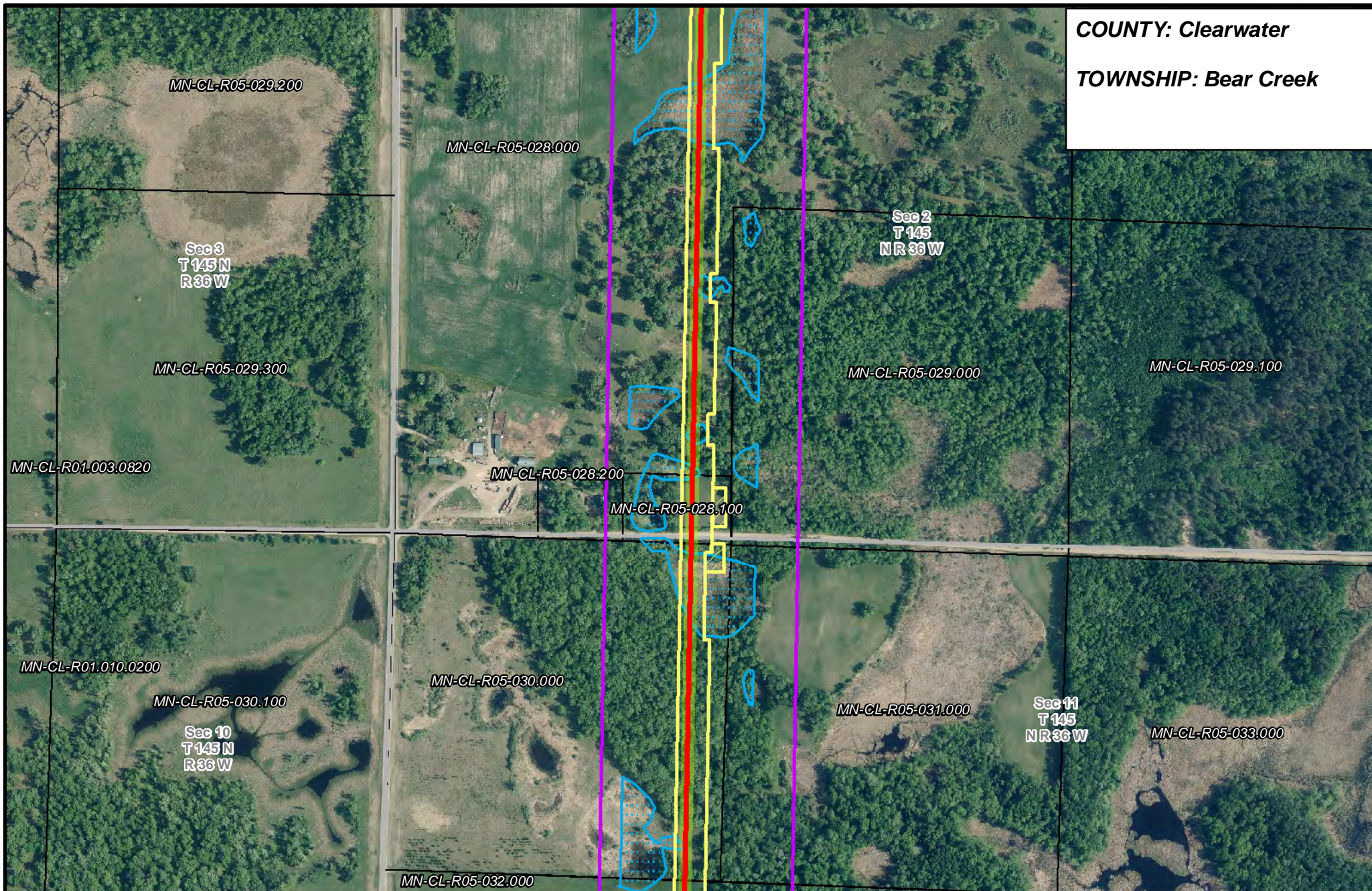
- | | | | |
|-----------------------|--------------------------------|----------------------|------------------------|
| PUC Designated Route | Mile Post | Surveyed Waterbodies | Tract Boundary |
| ROW | Temporary Workspace | ESA | MN Section Boundary |
| Line 3R Pipeline | Additional Temporary Workspace | Surveyed Wetlands | Township/City Boundary |
| Valve Location | Existing Enbridge Pipelines | NWI Wetlands | County Boundary |
| Enbridge Pump Station | Existing Electric Transmission | | |
| | Existing Third Party Pipelines | | |



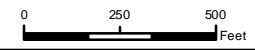
LINE 3 REPLACEMENT PIPELINE ROUTE

DRAWN: MLB CHECKED: --
 DATE: August 31, 2018 SCALE: 1:5,000
 Map 162 of 378

COUNTY: Clearwater
TOWNSHIP: Bear Creek



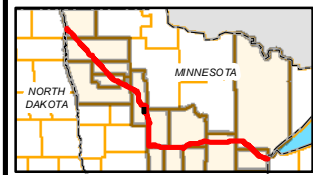
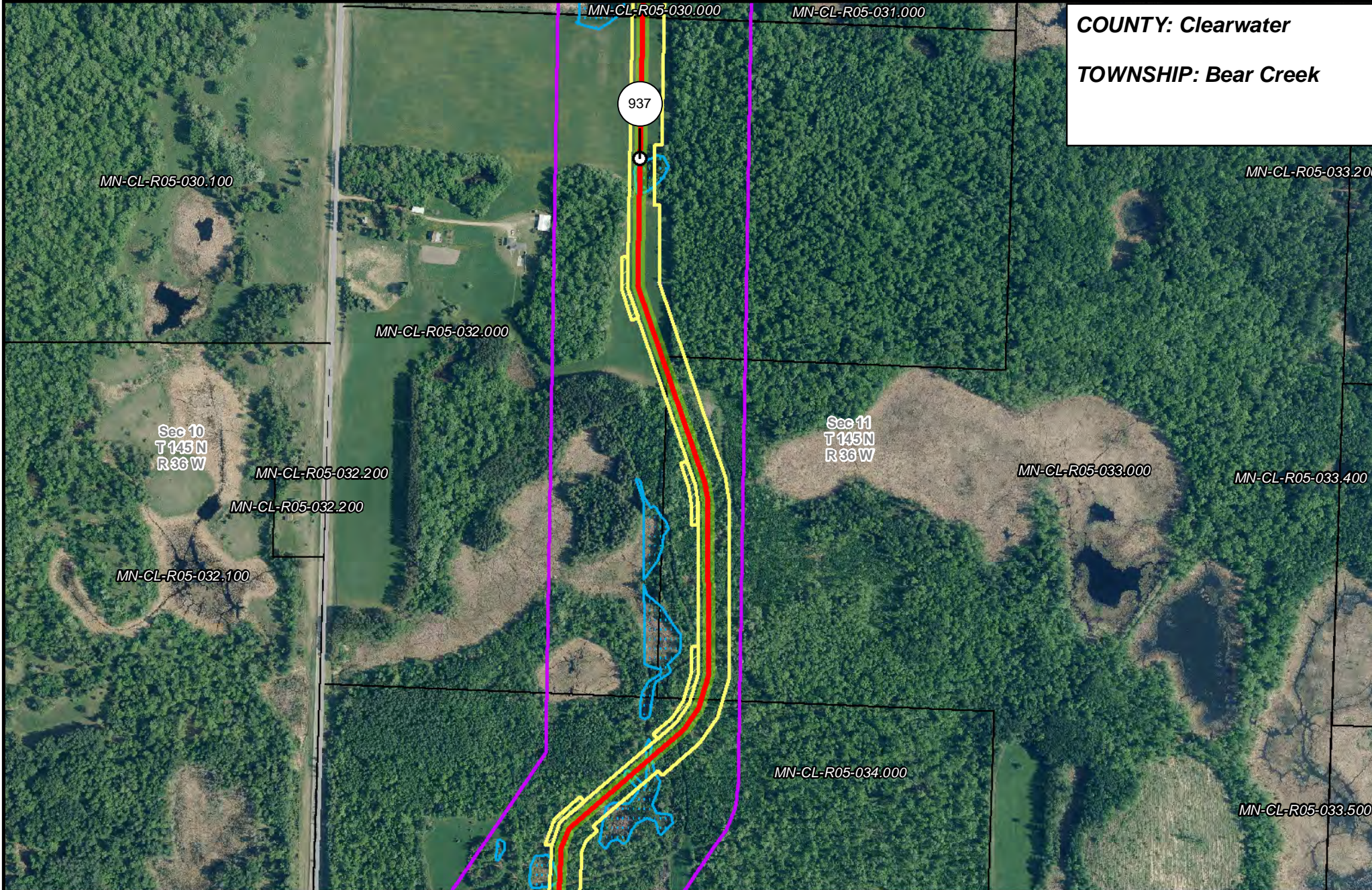
- | | | | |
|-----------------------|--------------------------------|----------------------|------------------------|
| PUC Designated Route | Mile Post | Surveyed Waterbodies | Tract Boundary |
| ROW | Temporary Workspace | ESA | MN Section Boundary |
| Line 3R Pipeline | Additional Temporary Workspace | Surveyed Wetlands | Township/City Boundary |
| Valve Location | Existing Enbridge Pipelines | NWI Wetlands | County Boundary |
| Enbridge Pump Station | Existing Electric Transmission | | |
| | Existing Third Party Pipelines | | |



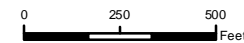
LINE 3 REPLACEMENT PIPELINE ROUTE

DRAWN: MLB CHECKED: --
 DATE: August 31, 2018 SCALE: 1:5,000
 Map 163 of 378

COUNTY: Clearwater
TOWNSHIP: Bear Creek



- | | | | |
|-----------------------|--------------------------------|----------------------|------------------------|
| PUC Designated Route | Mile Post | Surveyed Waterbodies | Tract Boundary |
| ROW | Temporary Workspace | ESA | MN Section Boundary |
| Line 3R Pipeline | Additional Temporary Workspace | Surveyed Wetlands | Township/City Boundary |
| Valve Location | Existing Enbridge Pipelines | NWI Wetlands | County Boundary |
| Enbridge Pump Station | Existing Electric Transmission | | |
| | Existing Third Party Pipelines | | |

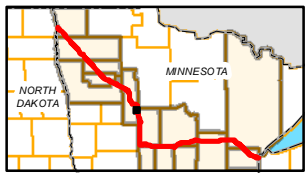
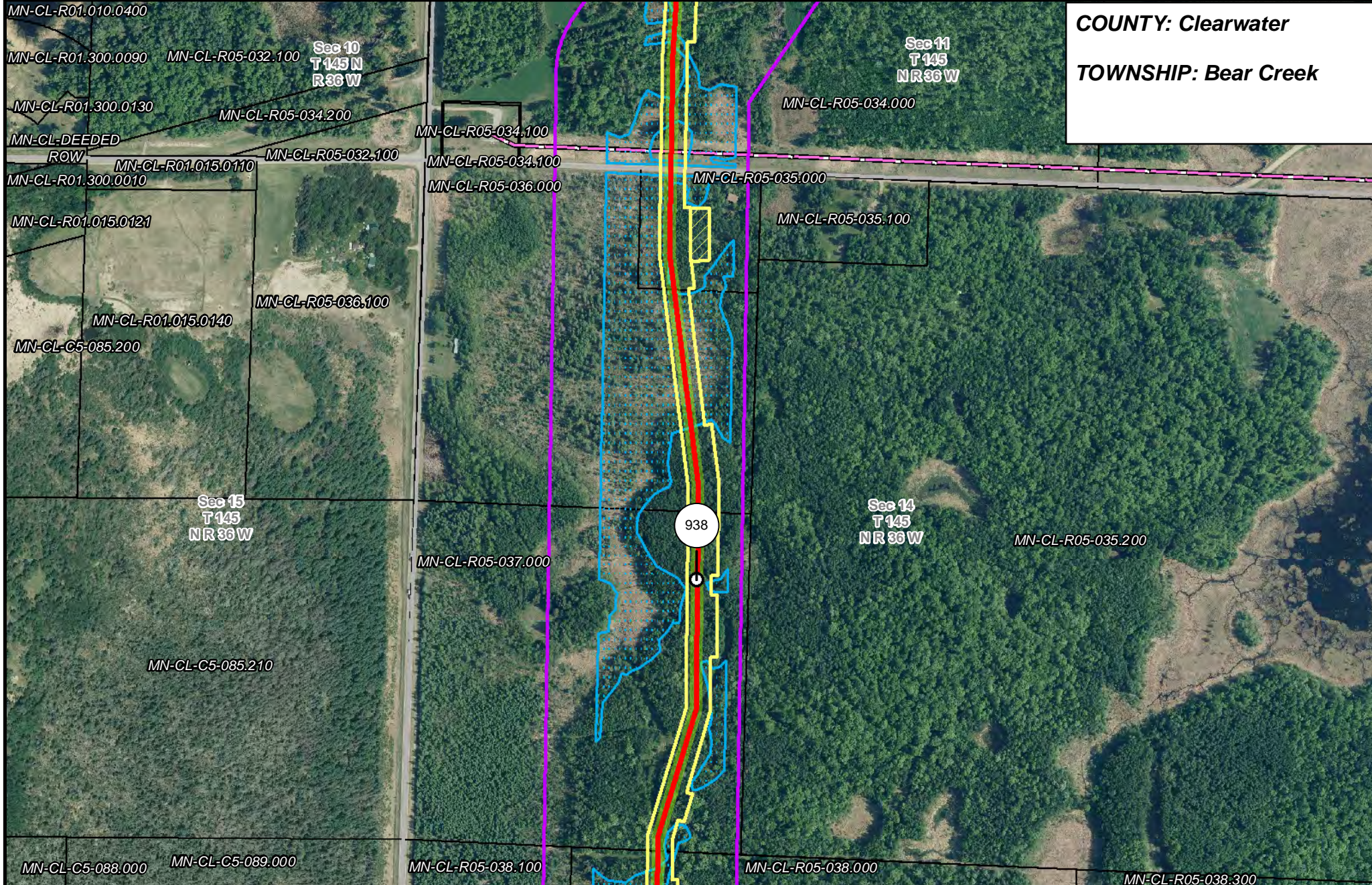


LINE 3 REPLACEMENT PIPELINE ROUTE

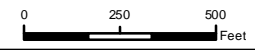
DRAWN: MLB CHECKED: --
 DATE: August 31, 2018 SCALE: 1:5,000

Map 164 of 378

COUNTY: Clearwater
TOWNSHIP: Bear Creek



- | | | | |
|-----------------------|--------------------------------|--------------------------------|------------------------|
| PUC Designated Route | Mile Post | Surveyed Waterbodies | Tract Boundary |
| ROW | Temporary Workspace | ESA | MN Section Boundary |
| Line 3R Pipeline | Additional Temporary Workspace | Surveyed Wetlands | Township/City Boundary |
| Valve Location | Existing Enbridge Pipelines | NWI Wetlands | County Boundary |
| Enbridge Pump Station | Existing Electric Transmission | Existing Third Party Pipelines | |

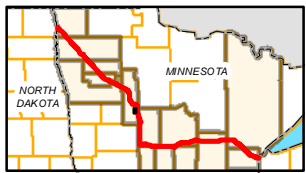
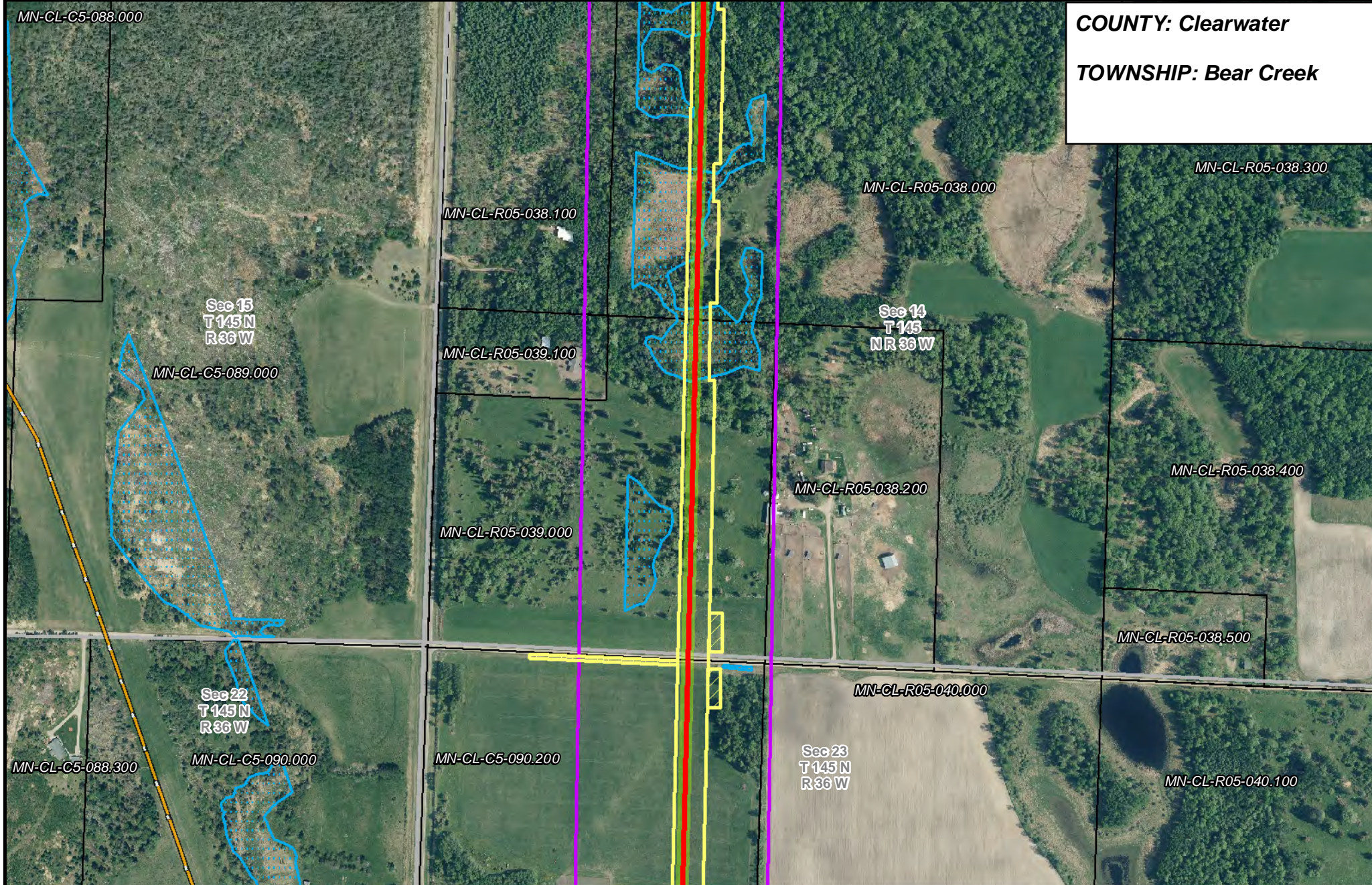


LINE 3 REPLACEMENT PIPELINE ROUTE

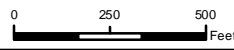
DRAWN: MLB CHECKED: --
 DATE: August 31, 2018 SCALE: 1:5,000
 Map 165 of 378

COUNTY: Clearwater

TOWNSHIP: Bear Creek



- PUC Designated Route
- ROW
- Line 3R Pipeline
- Valve Location
- Enbridge Pump Station
- Mile Post
- Temporary Workspace
- Additional Temporary Workspace
- Existing Enbridge Pipelines
- Existing Electric Transmission
- Existing Third Party Pipelines
- Surveyed Waterbodies
- ESA
- Surveyed Wetlands
- NWI Wetlands
- Tract Boundary
- MN Section Boundary
- Township/City Boundary
- County Boundary



LINE 3 REPLACEMENT PIPELINE ROUTE

DRAWN: MLB CHECKED: --
 DATE: August 31, 2018 SCALE: 1:5,000
 Map 166 of 378