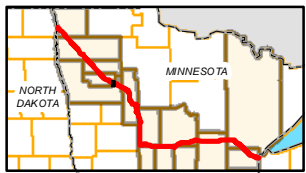
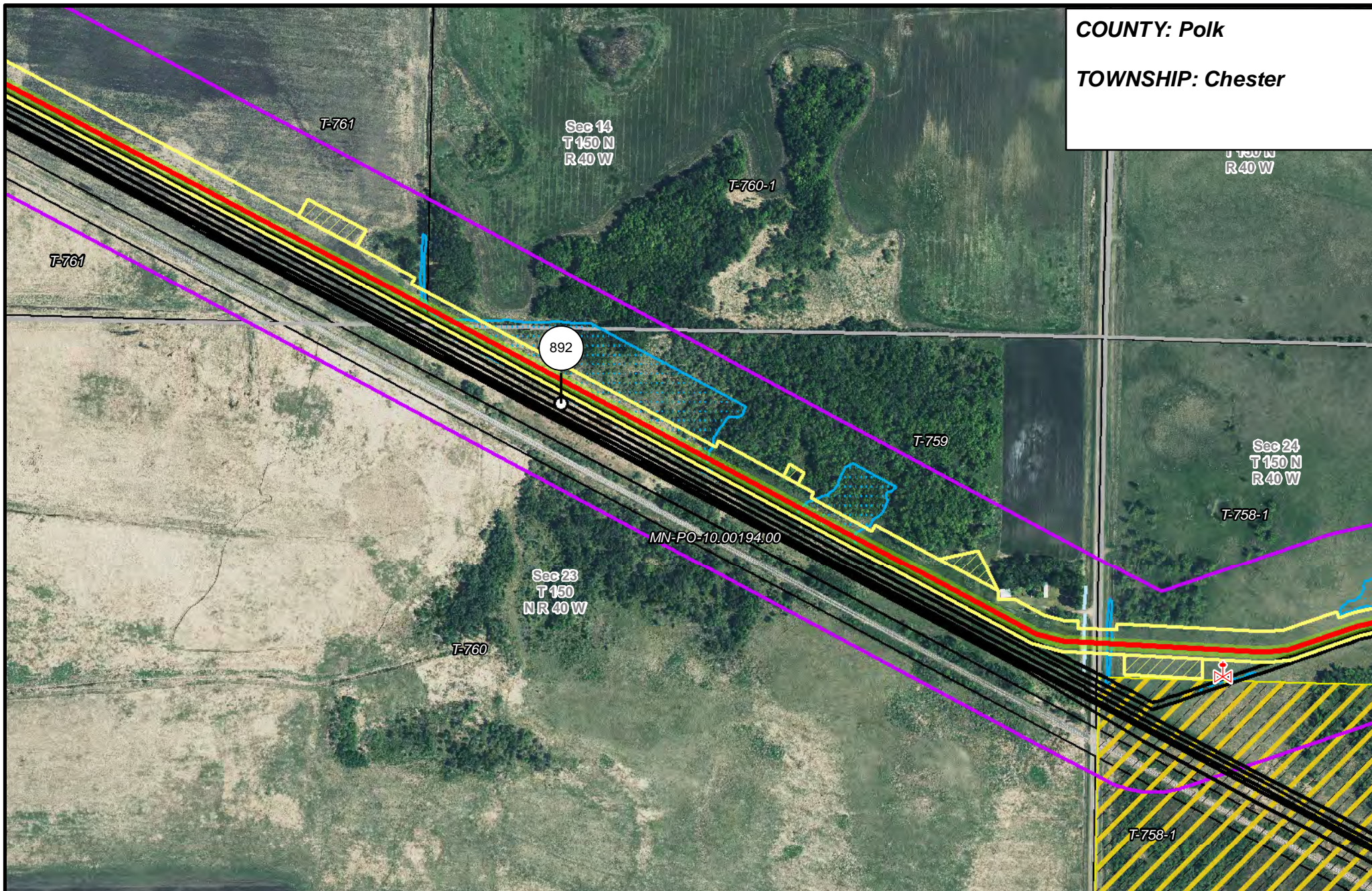
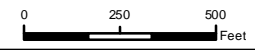


**COUNTY: Polk**  
**TOWNSHIP: Chester**



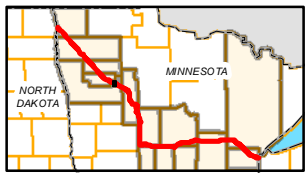
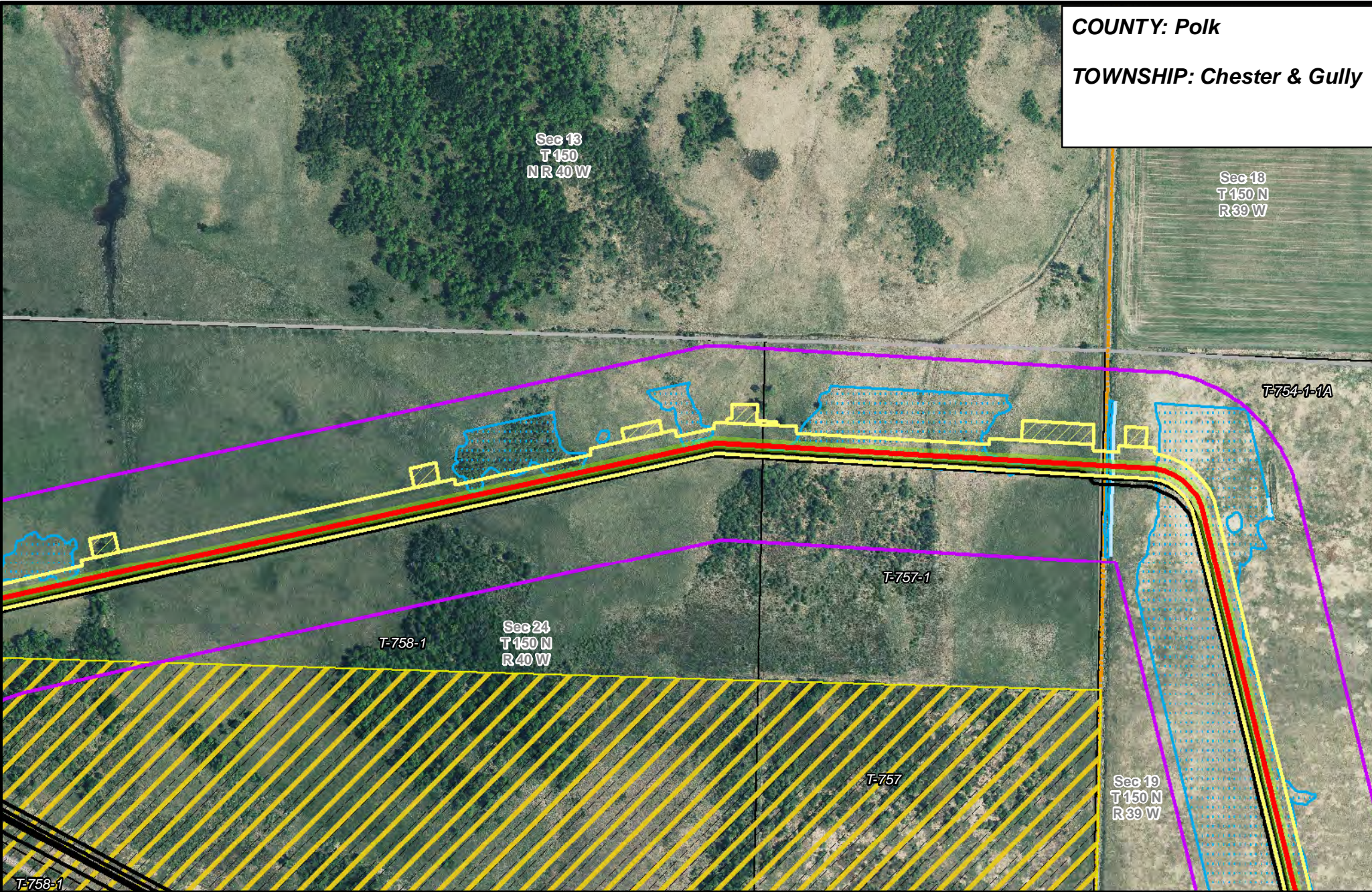
- |                       |                                |                      |                        |
|-----------------------|--------------------------------|----------------------|------------------------|
| PUC Designated Route  | Mile Post                      | Surveyed Waterbodies | Tract Boundary         |
| ROW                   | Temporary Workspace            | ESA                  | MN Section Boundary    |
| Line 3R Pipeline      | Additional Temporary Workspace | Surveyed Wetlands    | Township/City Boundary |
| Valve Location        | Existing Enbridge Pipelines    | NWI Wetlands         | County Boundary        |
| Enbridge Pump Station | Existing Electric Transmission |                      |                        |
|                       | Existing Third Party Pipelines |                      |                        |



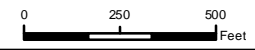
**LINE 3 REPLACEMENT PIPELINE ROUTE**

DRAWN: MLB      CHECKED: --  
 DATE: August 31, 2018      SCALE: 1:5,000  
 Map 110 of 378

**COUNTY: Polk**  
**TOWNSHIP: Chester & Gully**



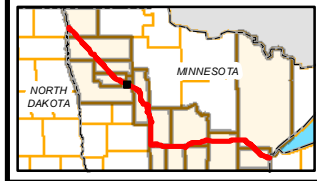
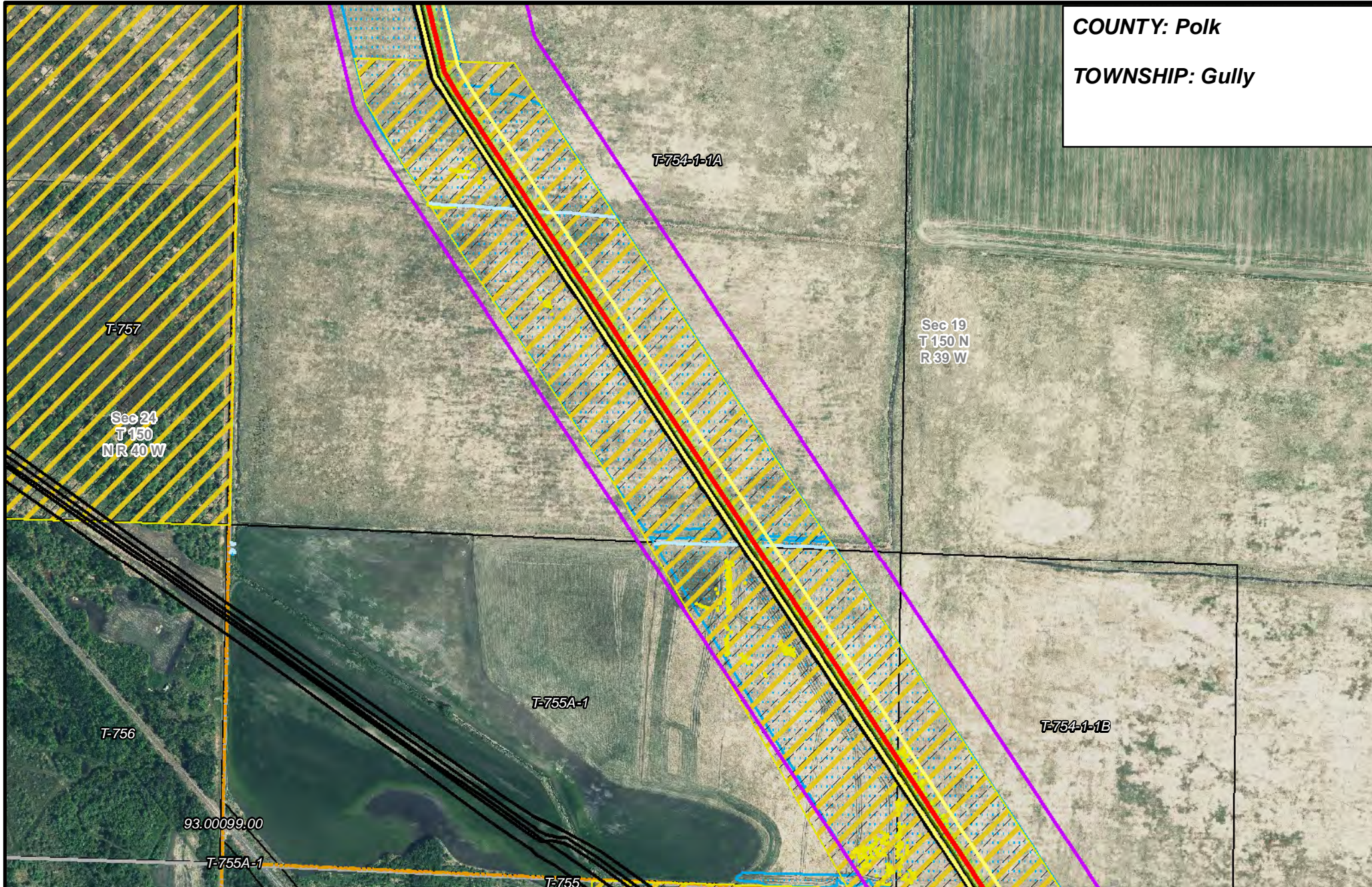
- |                       |                                |                      |                        |
|-----------------------|--------------------------------|----------------------|------------------------|
| PUC Designated Route  | Mile Post                      | Surveyed Waterbodies | Tract Boundary         |
| ROW                   | Temporary Workspace            | ESA                  | MN Section Boundary    |
| Line 3R Pipeline      | Additional Temporary Workspace | Surveyed Wetlands    | Township/City Boundary |
| Valve Location        | Existing Enbridge Pipelines    | NWI Wetlands         | County Boundary        |
| Enbridge Pump Station | Existing Electric Transmission |                      |                        |
|                       | Existing Third Party Pipelines |                      |                        |



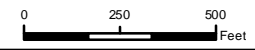
**LINE 3 REPLACEMENT PIPELINE ROUTE**

DRAWN: MLB CHECKED: --  
 DATE: August 31, 2018 SCALE: 1:5,000  
 Map 111 of 378

**COUNTY: Polk**  
**TOWNSHIP: Gully**



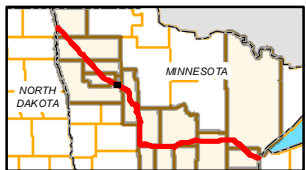
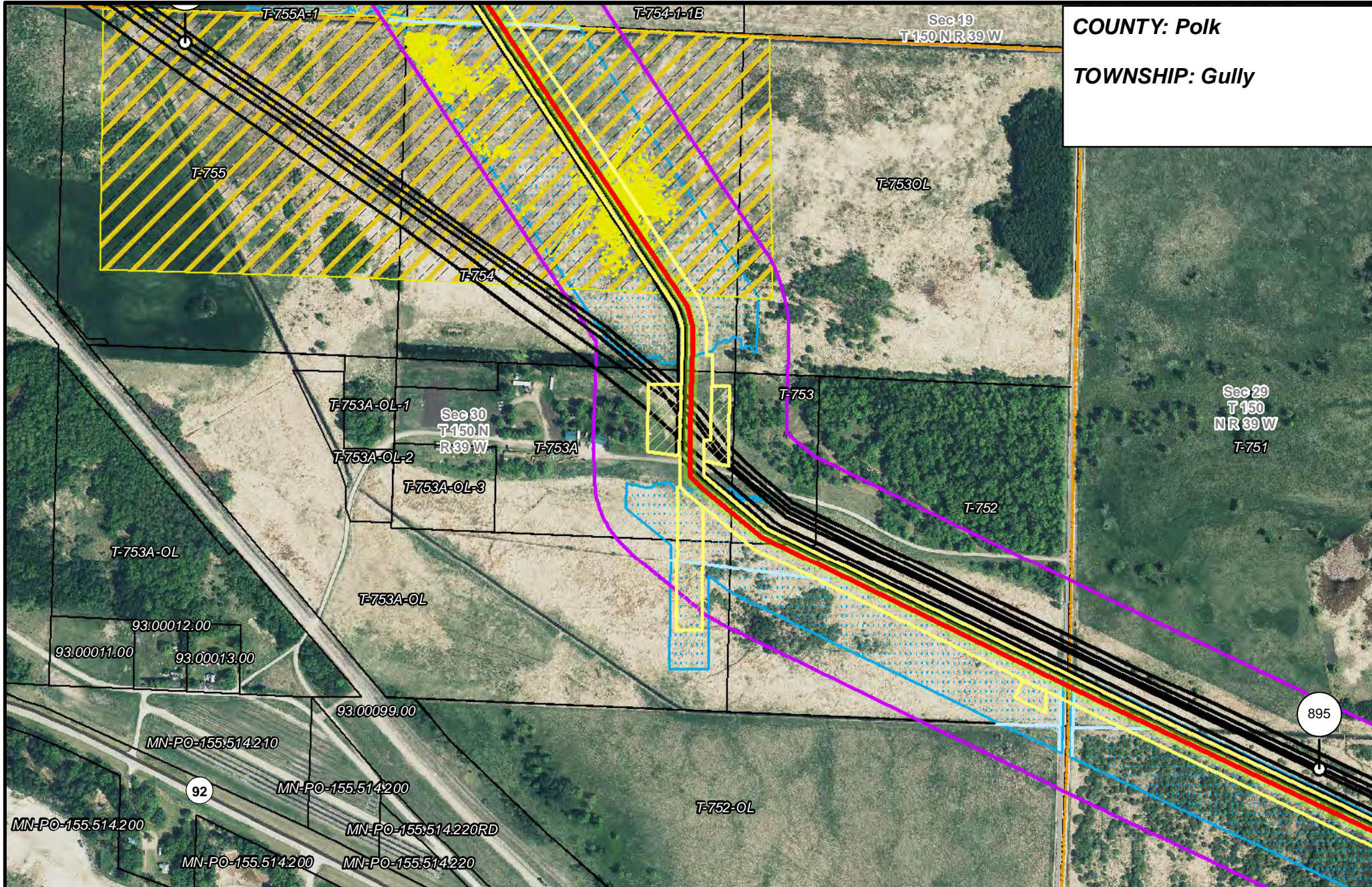
- |                       |                                |                      |                        |
|-----------------------|--------------------------------|----------------------|------------------------|
| PUC Designated Route  | Mile Post                      | Surveyed Waterbodies | Tract Boundary         |
| ROW                   | Temporary Workspace            | ESA                  | MN Section Boundary    |
| Line 3R Pipeline      | Additional Temporary Workspace | Surveyed Wetlands    | Township/City Boundary |
| Valve Location        | Existing Enbridge Pipelines    | NWI Wetlands         | County Boundary        |
| Enbridge Pump Station | Existing Electric Transmission |                      |                        |
|                       | Existing Third Party Pipelines |                      |                        |



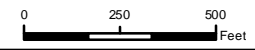
**LINE 3 REPLACEMENT PIPELINE ROUTE**

DRAWN: MLB CHECKED: --  
 DATE: August 31, 2018 SCALE: 1:5,000  
 Map 112 of 378

**COUNTY: Polk**  
**TOWNSHIP: Gully**



- |                       |                                |                      |                        |
|-----------------------|--------------------------------|----------------------|------------------------|
| PUC Designated Route  | Mile Post                      | Surveyed Waterbodies | Tract Boundary         |
| ROW                   | Temporary Workspace            | ESA                  | MN Section Boundary    |
| Line 3R Pipeline      | Additional Temporary Workspace | Surveyed Wetlands    | Township/City Boundary |
| Valve Location        | Existing Enbridge Pipelines    | NWI Wetlands         | County Boundary        |
| Enbridge Pump Station | Existing Electric Transmission |                      |                        |
|                       | Existing Third Party Pipelines |                      |                        |

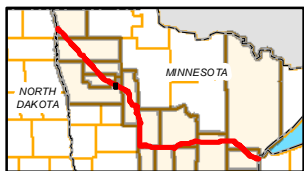
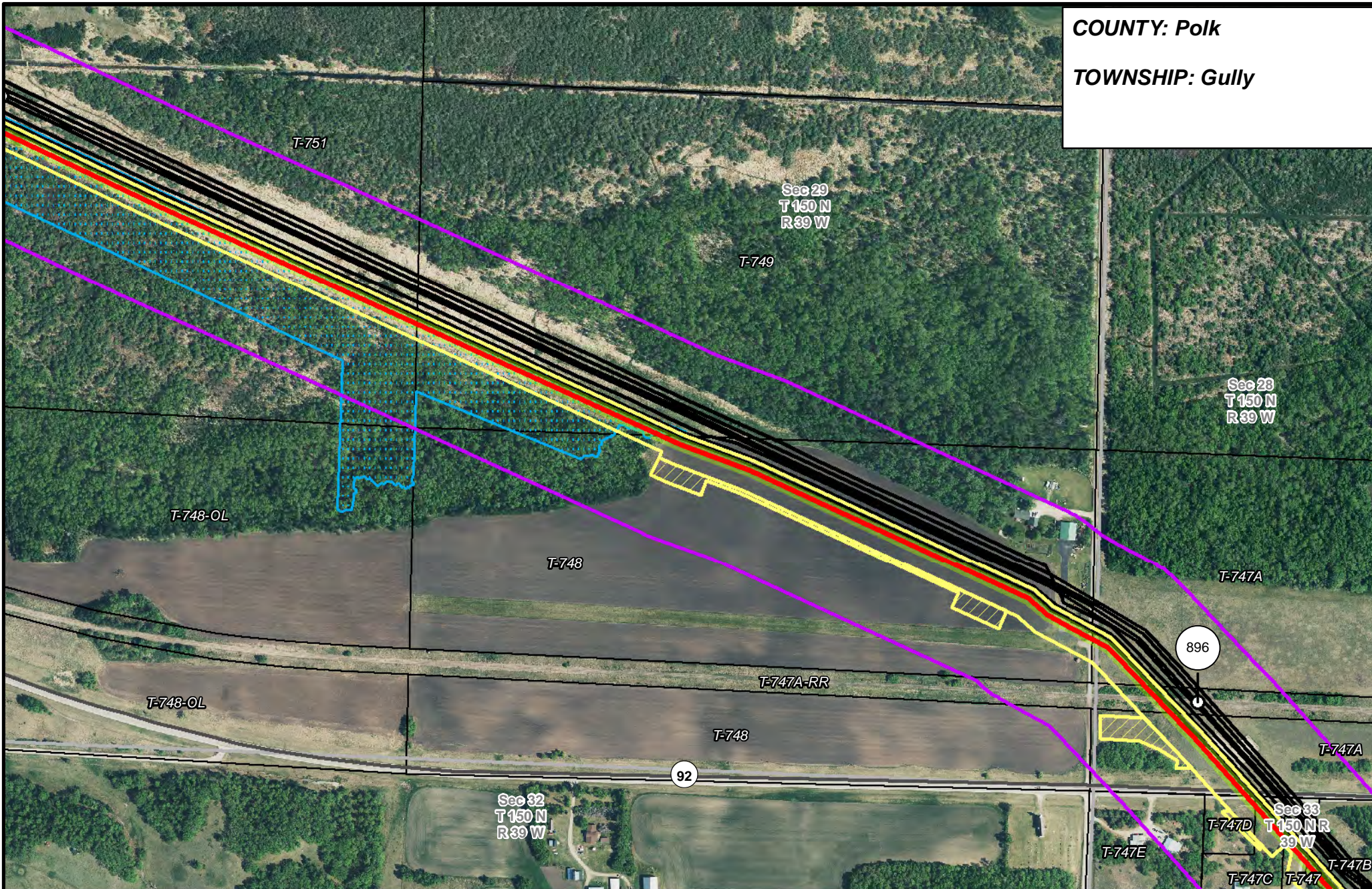


**LINE 3 REPLACEMENT PIPELINE ROUTE**

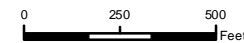
DRAWN: MLB CHECKED: --  
 DATE: August 31, 2018 SCALE: 1:5,000  
 Map 113 of 378

COUNTY: Polk

TOWNSHIP: Gully



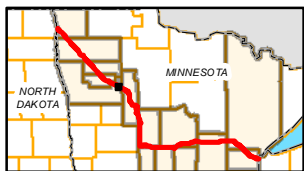
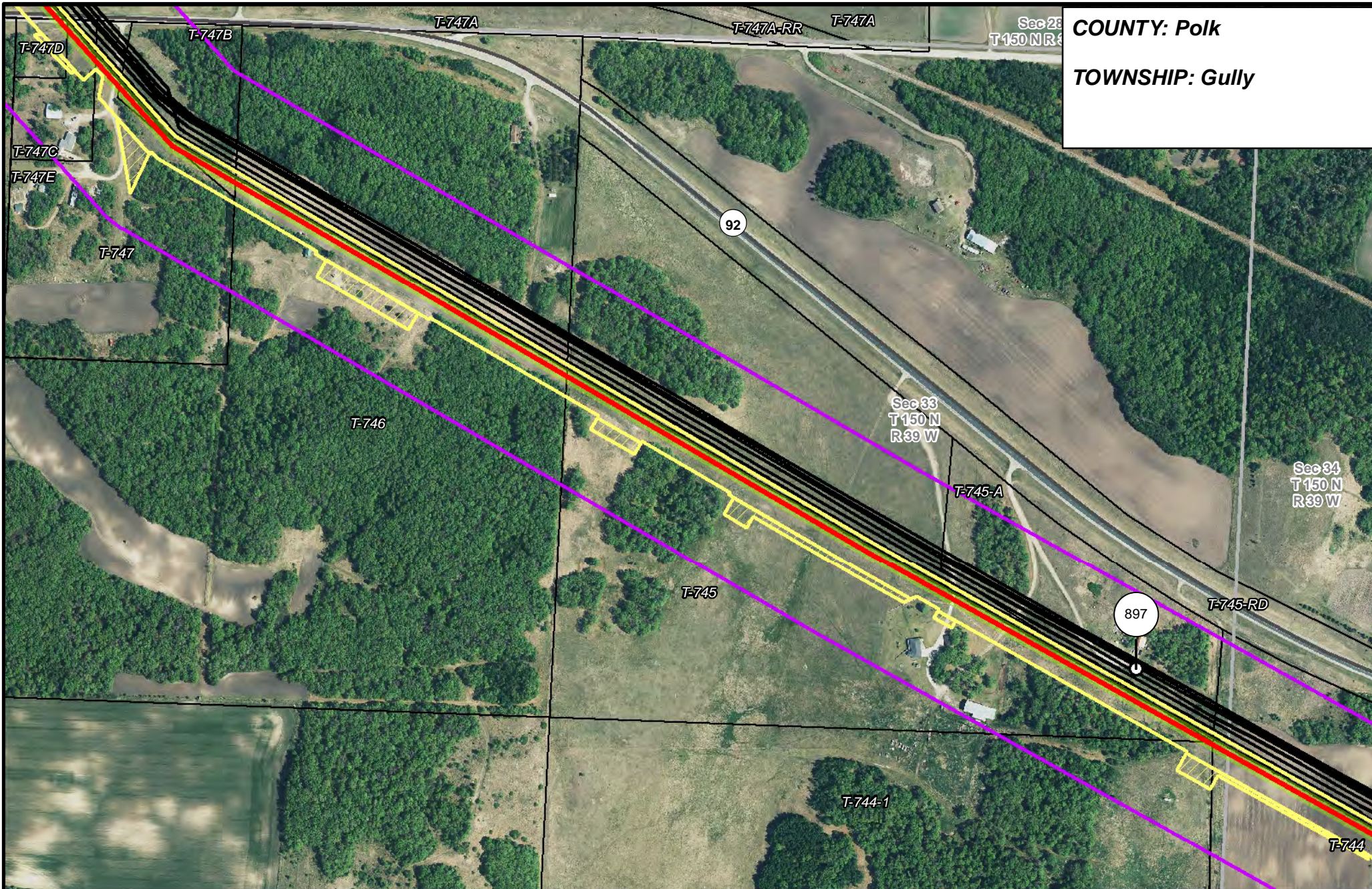
- |                       |                                |                      |                        |
|-----------------------|--------------------------------|----------------------|------------------------|
| PUC Designated Route  | Mile Post                      | Surveyed Waterbodies | Tract Boundary         |
| ROW                   | Temporary Workspace            | ESA                  | MN Section Boundary    |
| Line 3R Pipeline      | Additional Temporary Workspace | Surveyed Wetlands    | Township/City Boundary |
| Valve Location        | Existing Enbridge Pipelines    | NWI Wetlands         | County Boundary        |
| Enbridge Pump Station | Existing Electric Transmission |                      |                        |
|                       | Existing Third Party Pipelines |                      |                        |



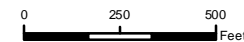
### LINE 3 REPLACEMENT PIPELINE ROUTE

DRAWN: MLB CHECKED: --  
DATE: August 31, 2018 SCALE: 1:5,000  
Map 114 of 378

**COUNTY: Polk**  
**TOWNSHIP: Gully**



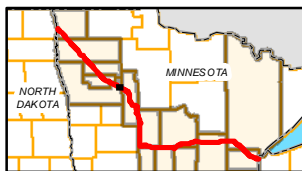
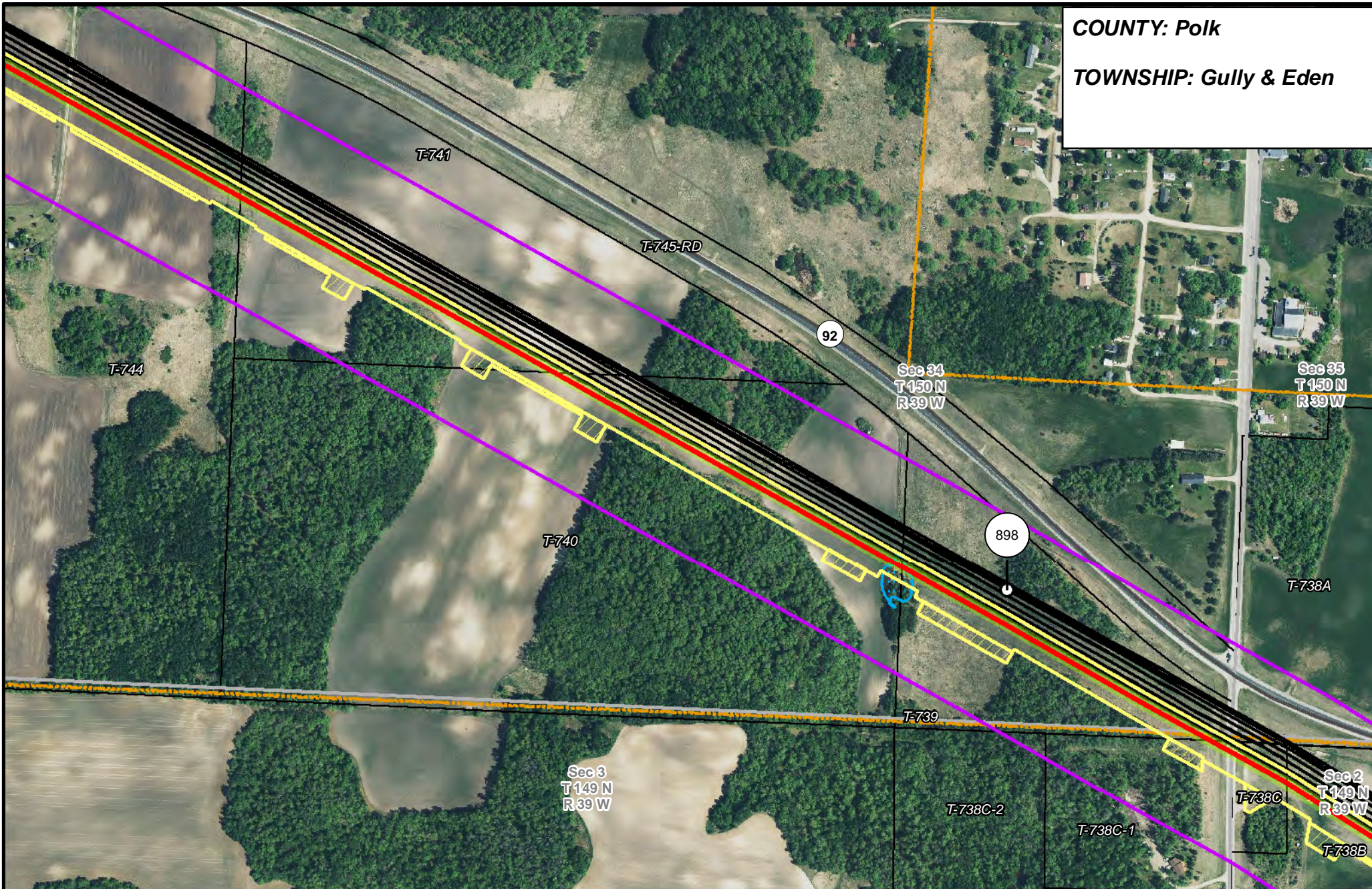
- |                       |                                |                      |                        |
|-----------------------|--------------------------------|----------------------|------------------------|
| PUC Designated Route  | Mile Post                      | Surveyed Waterbodies | Tract Boundary         |
| ROW                   | Temporary Workspace            | ESA                  | MN Section Boundary    |
| Line 3R Pipeline      | Additional Temporary Workspace | Surveyed Wetlands    | Township/City Boundary |
| Valve Location        | Existing Enbridge Pipelines    | NWI Wetlands         | County Boundary        |
| Enbridge Pump Station | Existing Electric Transmission |                      |                        |
|                       | Existing Third Party Pipelines |                      |                        |



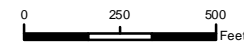
**LINE 3 REPLACEMENT  
PIPELINE ROUTE**

DRAWN: MLB CHECKED: --  
DATE: August 31, 2018 SCALE: 1:5,000

**COUNTY: Polk**  
**TOWNSHIP: Gully & Eden**



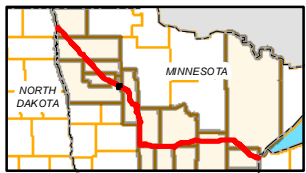
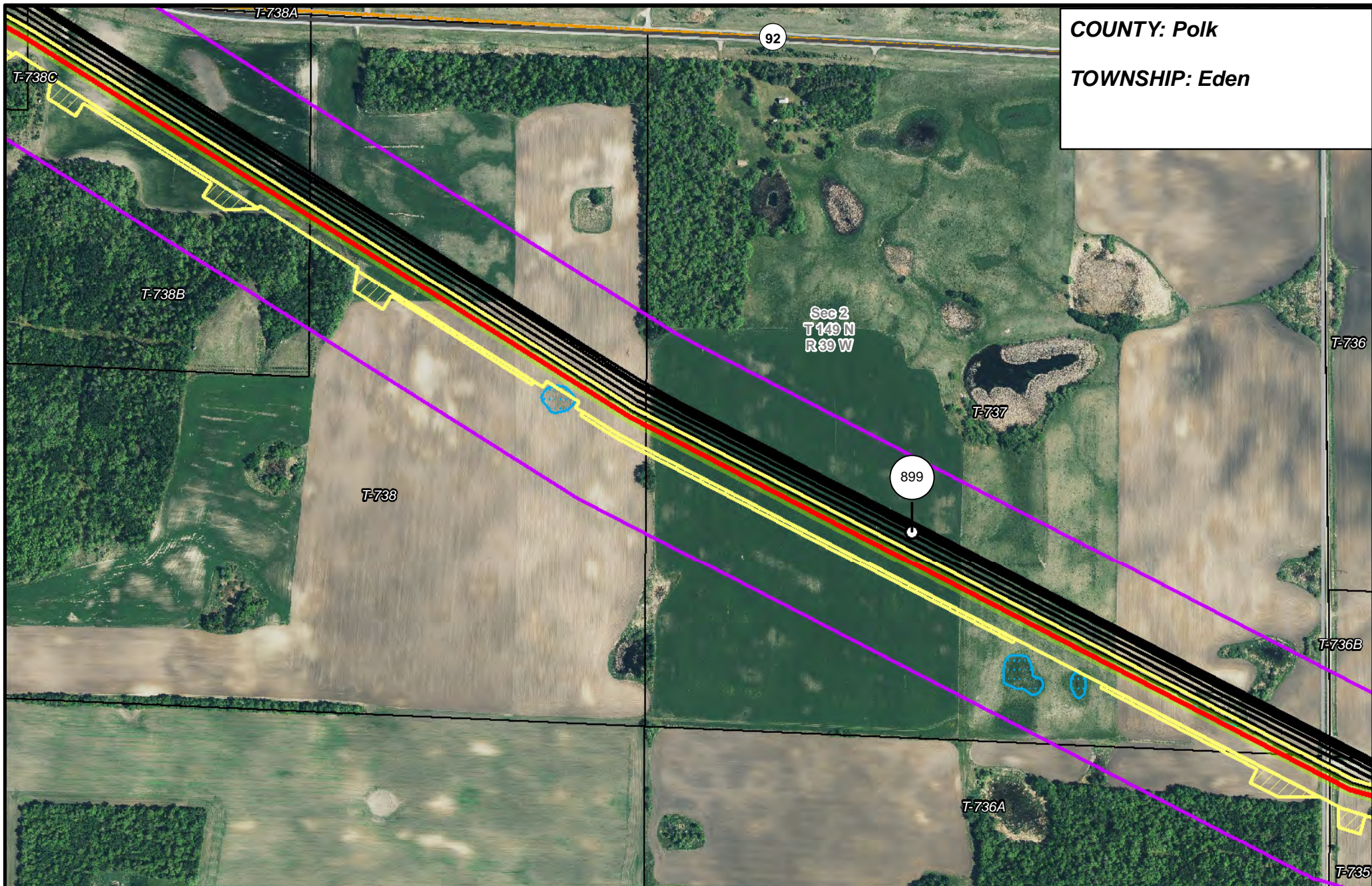
- |                       |                                |                      |                        |
|-----------------------|--------------------------------|----------------------|------------------------|
| PUC Designated Route  | Mile Post                      | Surveyed Waterbodies | Tract Boundary         |
| ROW                   | Temporary Workspace            | ESA                  | MN Section Boundary    |
| Line 3R Pipeline      | Additional Temporary Workspace | Surveyed Wetlands    | Township/City Boundary |
| Valve Location        | Existing Enbridge Pipelines    | NWI Wetlands         | County Boundary        |
| Enbridge Pump Station | Existing Electric Transmission |                      |                        |
|                       | Existing Third Party Pipelines |                      |                        |



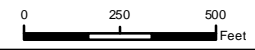
**LINE 3 REPLACEMENT PIPELINE ROUTE**

DRAWN: MLB      CHECKED: ...  
 DATE: August 31, 2018      SCALE: 1:5,000  
 Map 116 of 378

**COUNTY: Polk**  
**TOWNSHIP: Eden**



- |                       |                                |                      |                        |
|-----------------------|--------------------------------|----------------------|------------------------|
| PUC Designated Route  | Mile Post                      | Surveyed Waterbodies | Tract Boundary         |
| ROW                   | Temporary Workspace            | ESA                  | MN Section Boundary    |
| Line 3R Pipeline      | Additional Temporary Workspace | Surveyed Wetlands    | Township/City Boundary |
| Valve Location        | Existing Enbridge Pipelines    | NWI Wetlands         | County Boundary        |
| Enbridge Pump Station | Existing Electric Transmission |                      |                        |
|                       | Existing Third Party Pipelines |                      |                        |

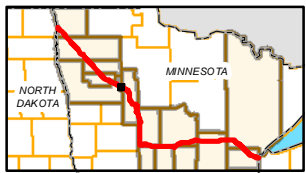
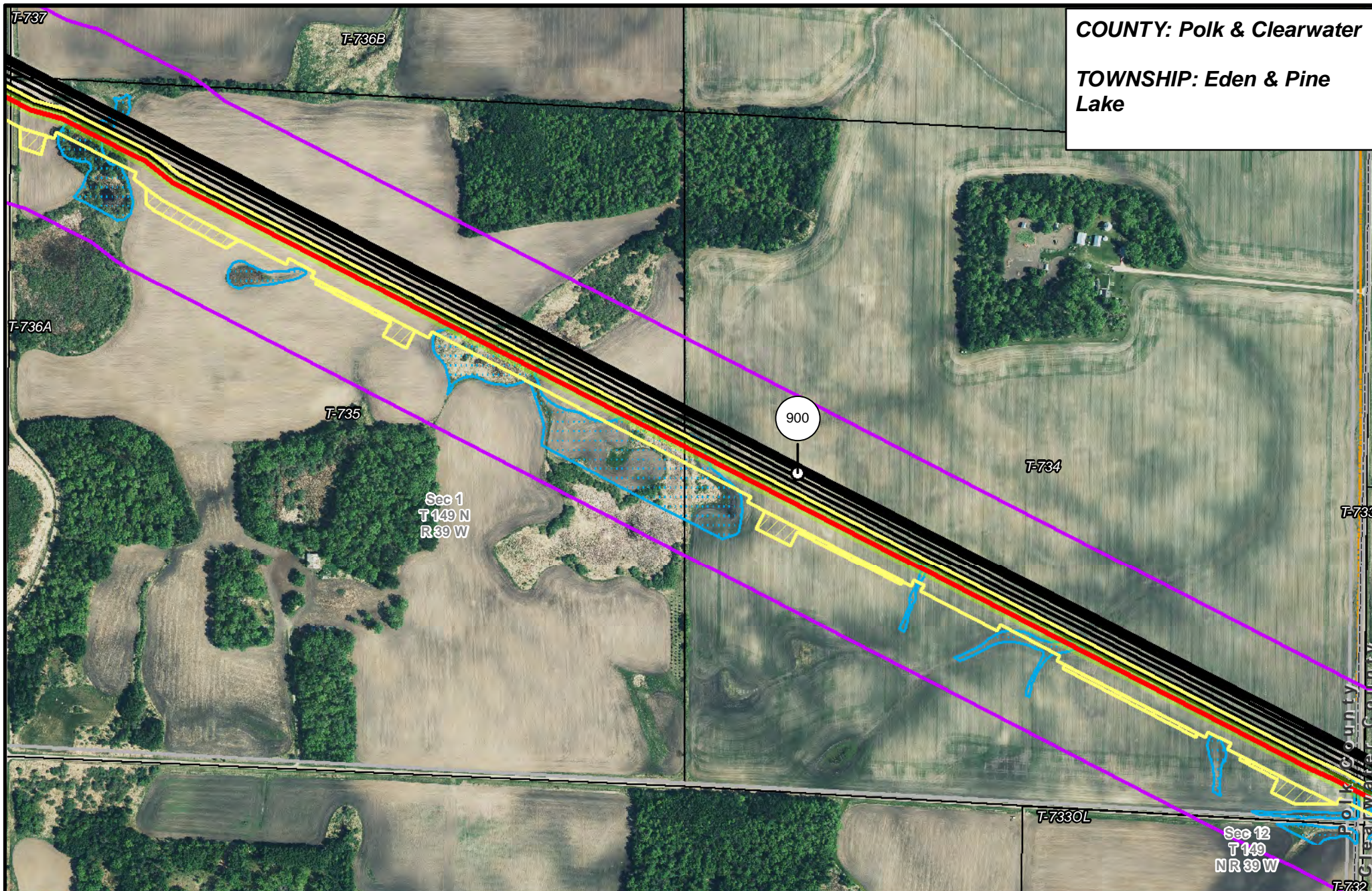


**LINE 3 REPLACEMENT PIPELINE ROUTE**

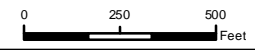
DRAWN: MLB      CHECKED: ---  
 DATE: August 31, 2018      SCALE: 1:5,000  
 Map 117 of 378



**COUNTY: Polk & Clearwater**  
**TOWNSHIP: Eden & Pine Lake**



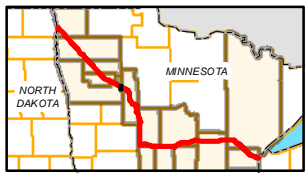
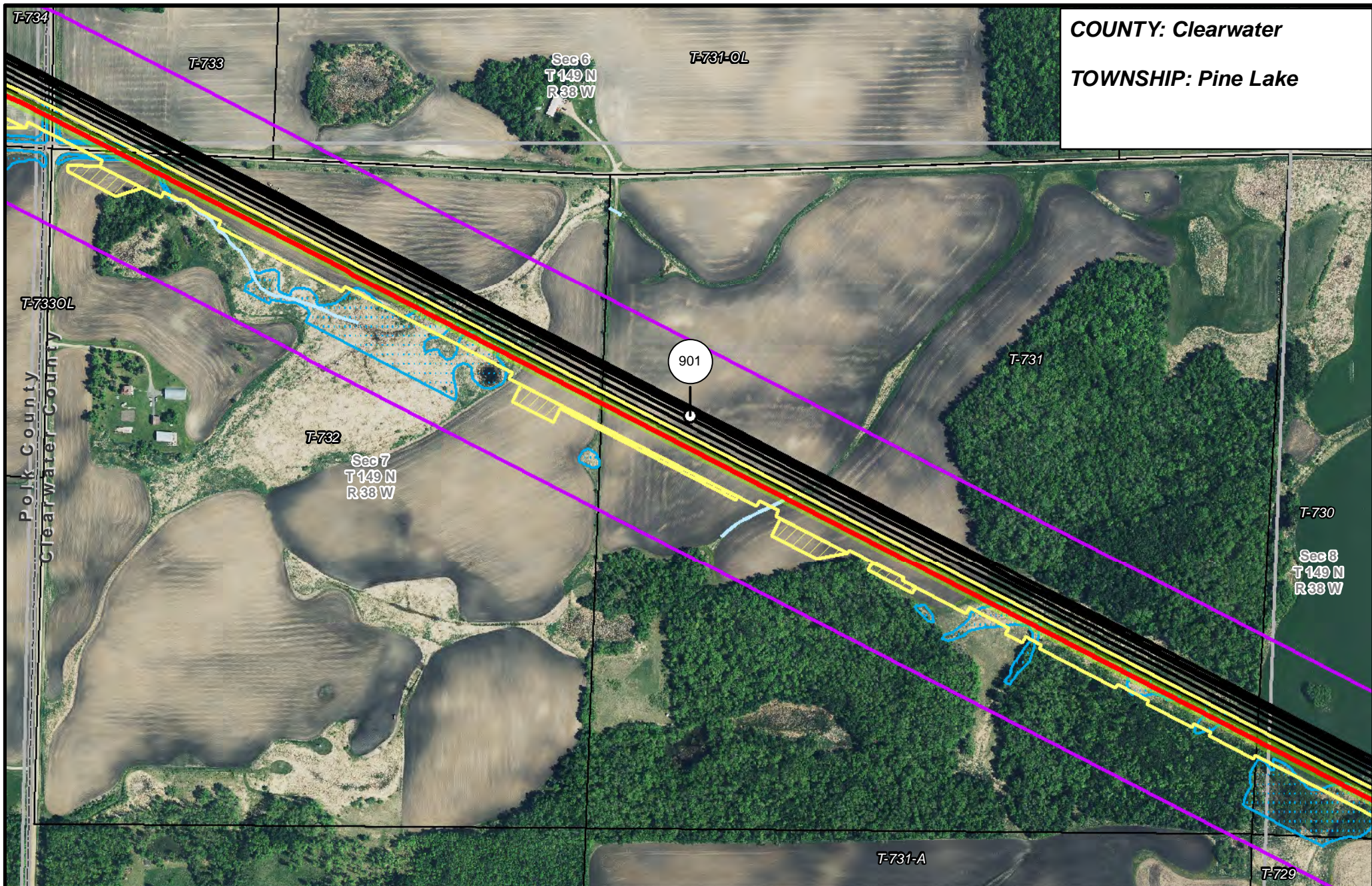
- |                       |                                |                      |                        |
|-----------------------|--------------------------------|----------------------|------------------------|
| PUC Designated Route  | Mile Post                      | Surveyed Waterbodies | Tract Boundary         |
| ROW                   | Temporary Workspace            | ESA                  | MN Section Boundary    |
| Line 3R Pipeline      | Additional Temporary Workspace | Surveyed Wetlands    | Township/City Boundary |
| Valve Location        | Existing Enbridge Pipelines    | NWI Wetlands         | County Boundary        |
| Enbridge Pump Station | Existing Electric Transmission |                      |                        |
|                       | Existing Third Party Pipelines |                      |                        |



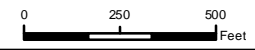
**LINE 3 REPLACEMENT PIPELINE ROUTE**

DRAWN: MLB CHECKED: --  
 DATE: August 31, 2018 SCALE: 1:5,000  
 Map 118 of 378

COUNTY: Clearwater  
 TOWNSHIP: Pine Lake



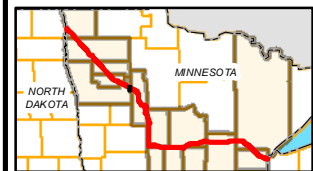
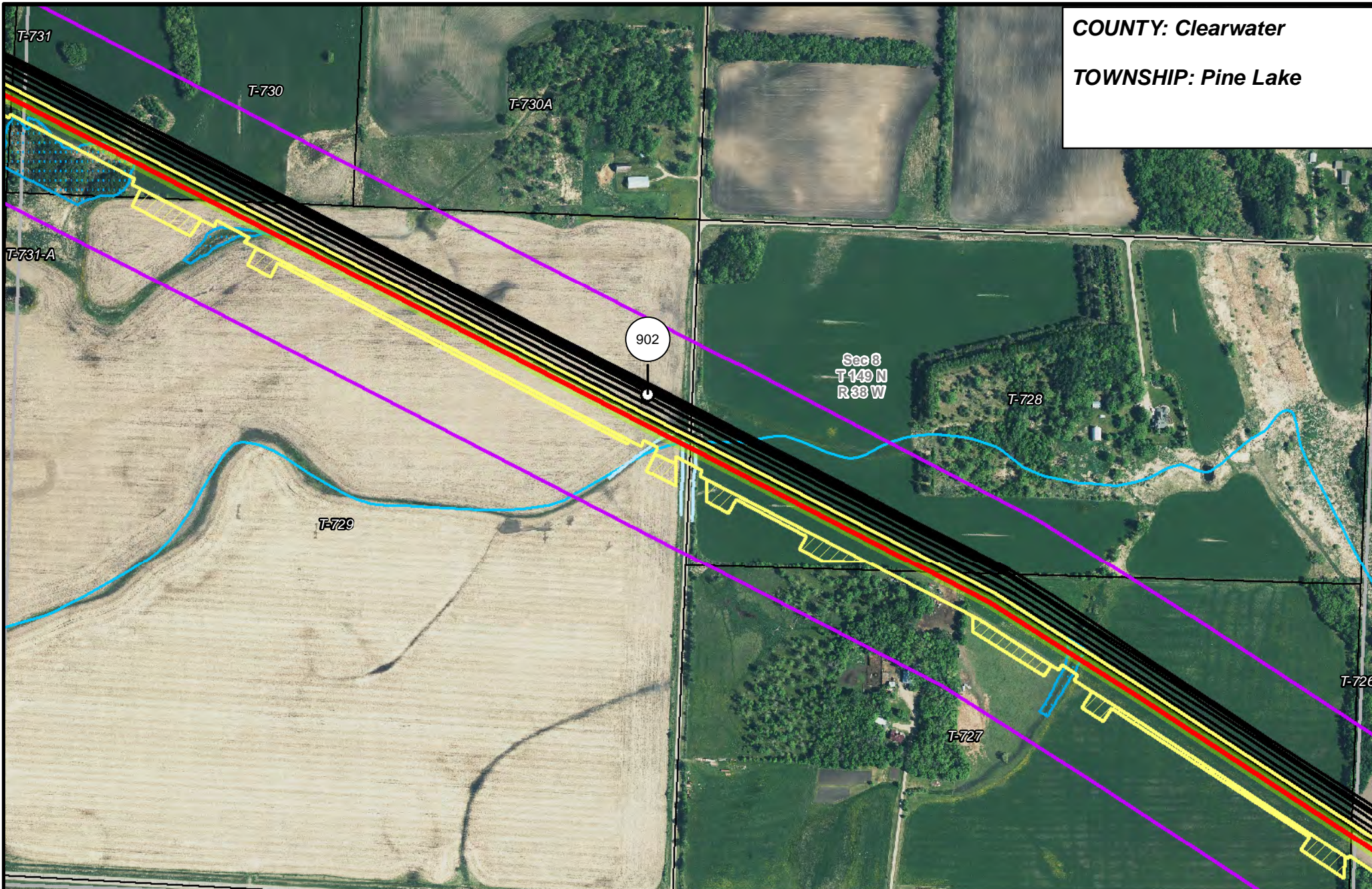
- |                       |                                |                      |                        |
|-----------------------|--------------------------------|----------------------|------------------------|
| PUC Designated Route  | Mile Post                      | Surveyed Waterbodies | Tract Boundary         |
| ROW                   | Temporary Workspace            | ESA                  | MN Section Boundary    |
| Line 3R Pipeline      | Additional Temporary Workspace | Surveyed Wetlands    | Township/City Boundary |
| Valve Location        | Existing Enbridge Pipelines    | NWI Wetlands         | County Boundary        |
| Enbridge Pump Station | Existing Electric Transmission |                      |                        |
|                       | Existing Third Party Pipelines |                      |                        |



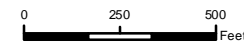
**LINE 3 REPLACEMENT  
 PIPELINE ROUTE**

DRAWN: MLB CHECKED: --  
 DATE: August 31, 2018 SCALE: 1:5,000  
 Map 119 of 378

**COUNTY:** Clearwater  
**TOWNSHIP:** Pine Lake



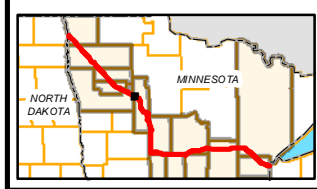
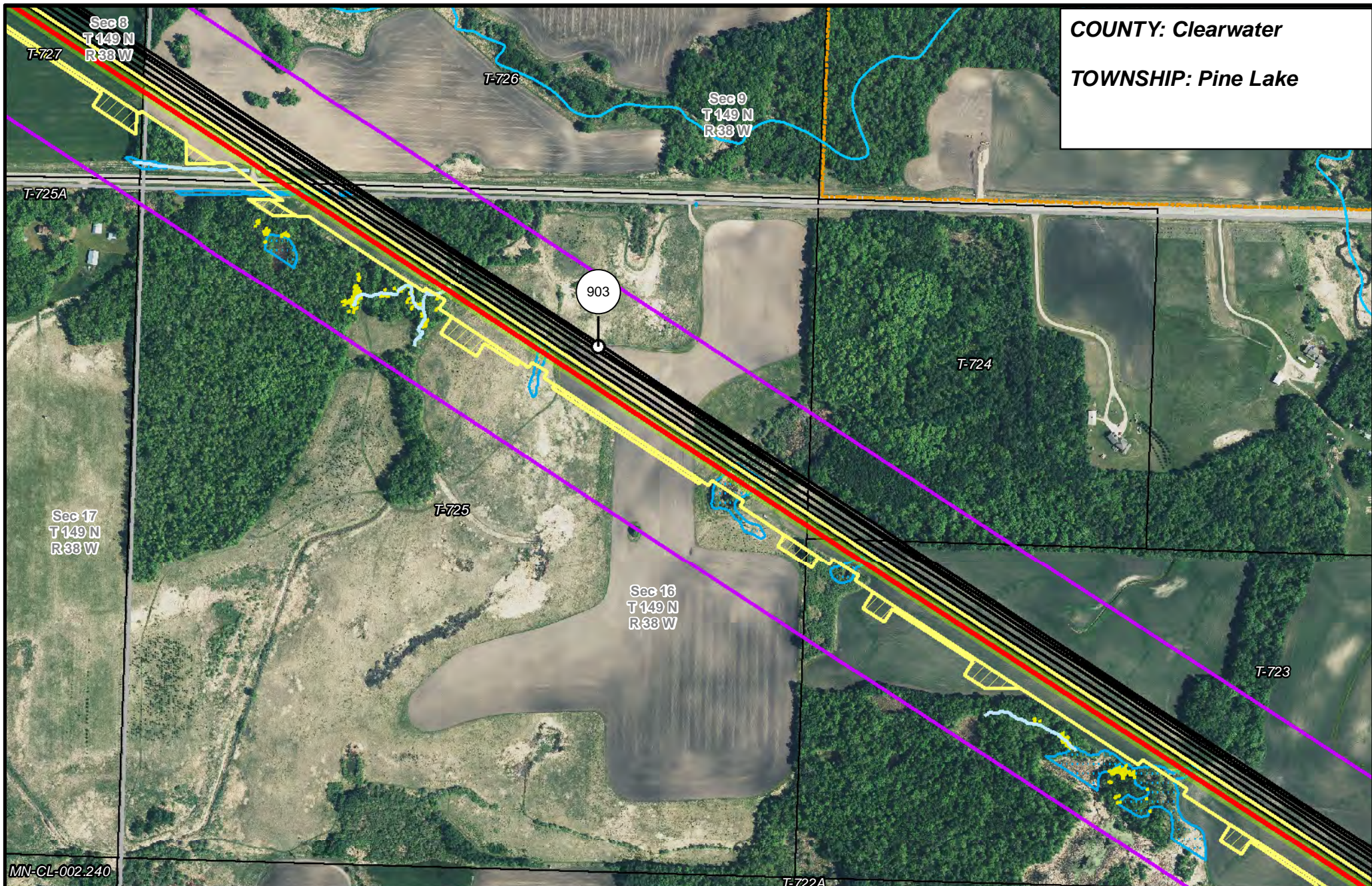
- |                       |                                |                      |                        |
|-----------------------|--------------------------------|----------------------|------------------------|
| PUC Designated Route  | Mile Post                      | Surveyed Waterbodies | Tract Boundary         |
| ROW                   | Temporary Workspace            | ESA                  | MN Section Boundary    |
| Line 3R Pipeline      | Additional Temporary Workspace | Surveyed Wetlands    | Township/City Boundary |
| Valve Location        | Existing Enbridge Pipelines    | NWI Wetlands         | County Boundary        |
| Enbridge Pump Station | Existing Electric Transmission |                      |                        |
|                       | Existing Third Party Pipelines |                      |                        |



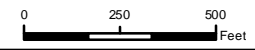
**LINE 3 REPLACEMENT  
PIPELINE ROUTE**

DRAWN: MLB CHECKED: --  
DATE: August 31, 2018 SCALE: 1:5,000  
Map 120 of 378

**COUNTY:** Clearwater  
**TOWNSHIP:** Pine Lake



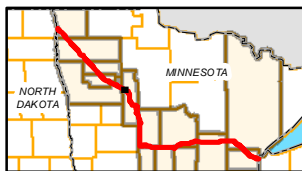
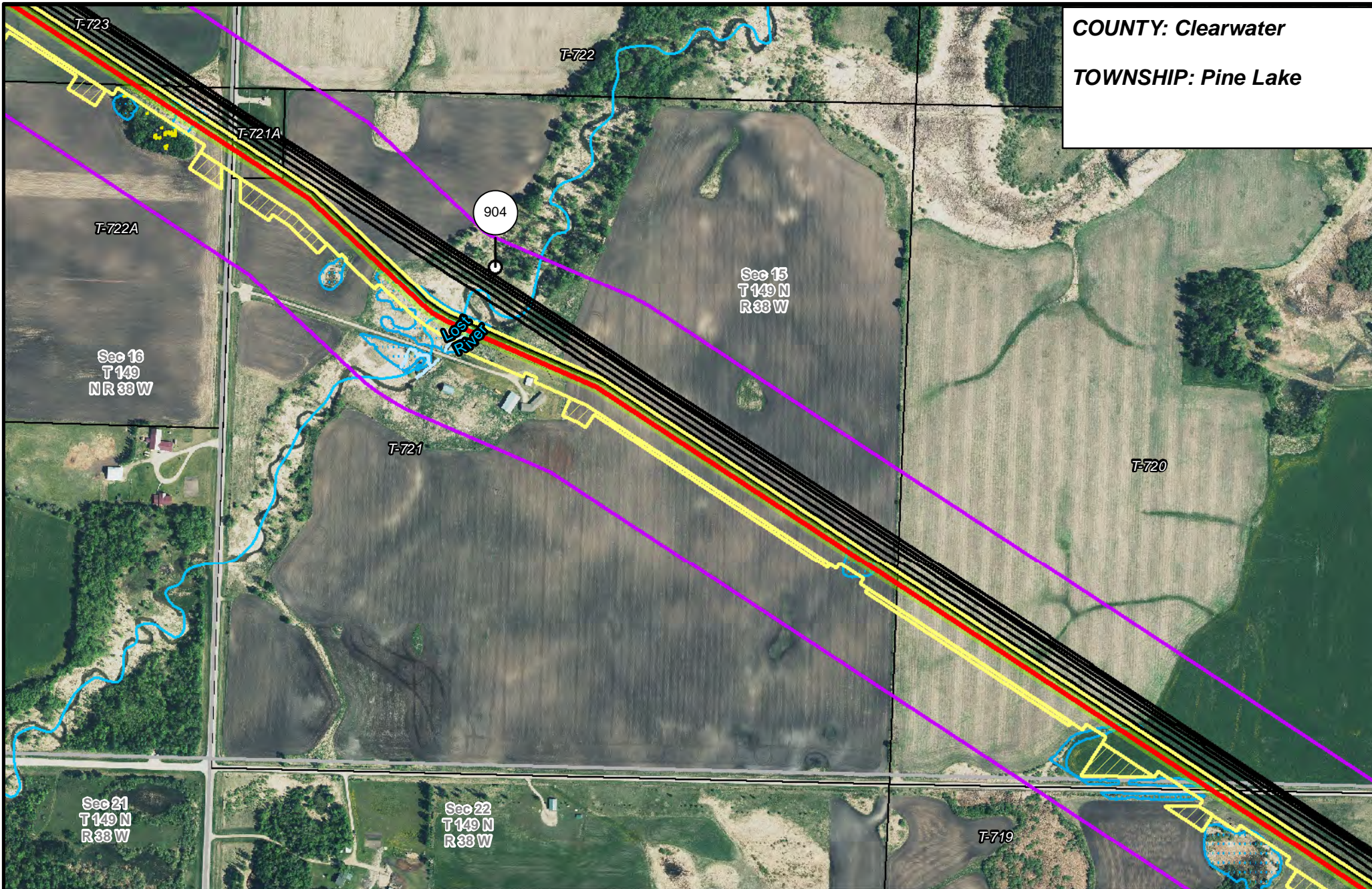
- |                       |                                |                      |                        |
|-----------------------|--------------------------------|----------------------|------------------------|
| PUC Designated Route  | Mile Post                      | Surveyed Waterbodies | Tract Boundary         |
| ROW                   | Temporary Workspace            | ESA                  | MN Section Boundary    |
| Line 3R Pipeline      | Additional Temporary Workspace | Surveyed Wetlands    | Township/City Boundary |
| Valve Location        | Existing Enbridge Pipelines    | NWI Wetlands         | County Boundary        |
| Enbridge Pump Station | Existing Electric Transmission |                      |                        |
|                       | Existing Third Party Pipelines |                      |                        |



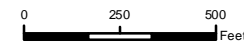
**LINE 3 REPLACEMENT PIPELINE ROUTE**

DRAWN: MLB      CHECKED: --  
 DATE: August 31, 2018      SCALE: 1:5,000  
 Map 121 of 378

**COUNTY:** Clearwater  
**TOWNSHIP:** Pine Lake



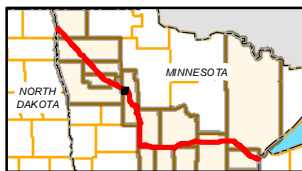
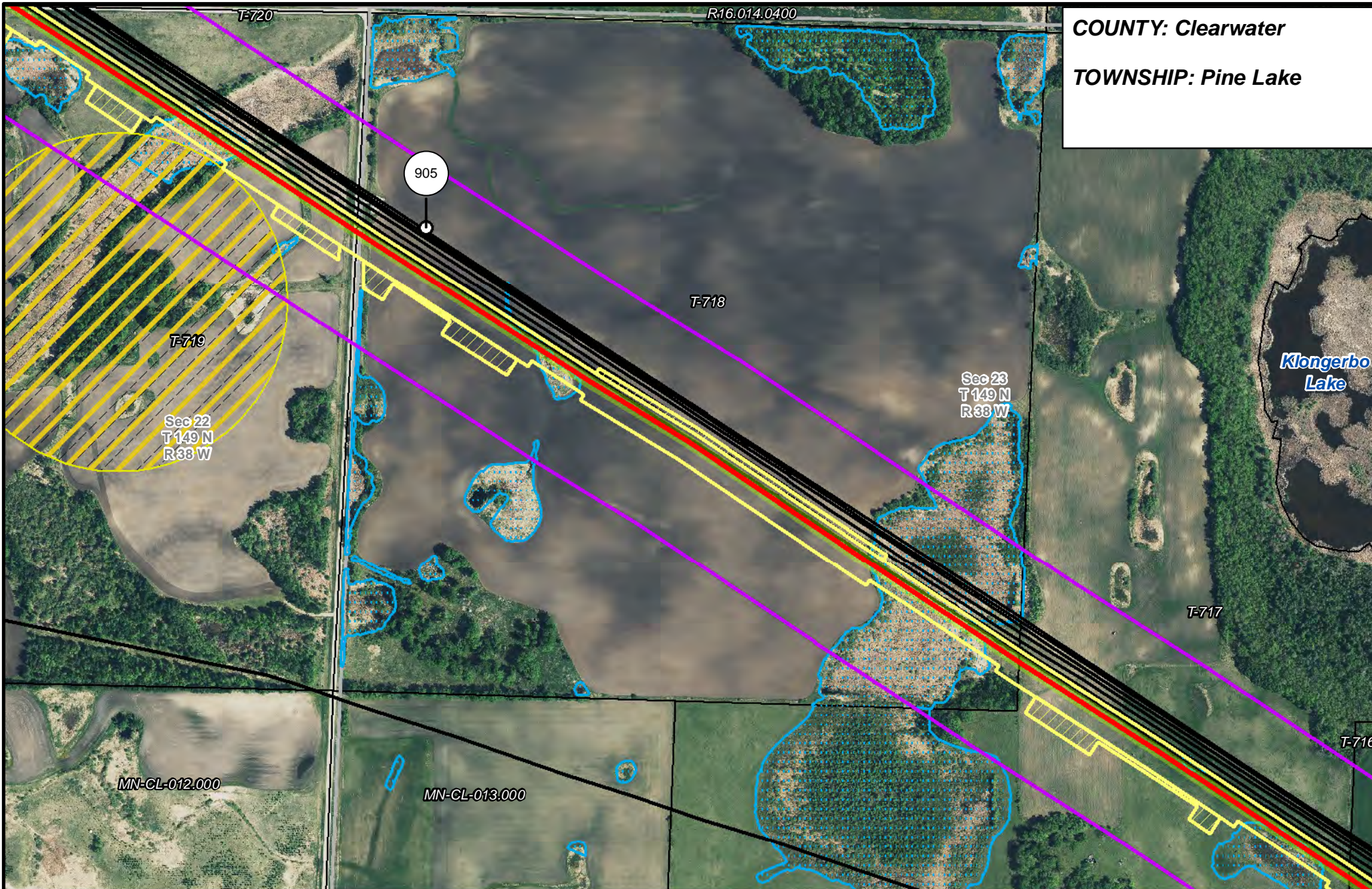
- |                       |                                |                                |                        |
|-----------------------|--------------------------------|--------------------------------|------------------------|
| PUC Designated Route  | Mile Post                      | Surveyed Waterbodies           | Tract Boundary         |
| ROW                   | Temporary Workspace            | ESA                            | MN Section Boundary    |
| Line 3R Pipeline      | Additional Temporary Workspace | Surveyed Wetlands              | Township/City Boundary |
| Valve Location        | Existing Enbridge Pipelines    | NWI Wetlands                   | County Boundary        |
| Enbridge Pump Station | Existing Electric Transmission | Existing Third Party Pipelines |                        |



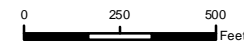
**LINE 3 REPLACEMENT  
PIPELINE ROUTE**

DRAWN: MLB CHECKED: --  
DATE: August 31, 2018 SCALE: 1:5,000  
Map 122 of 378

**COUNTY:** Clearwater  
**TOWNSHIP:** Pine Lake



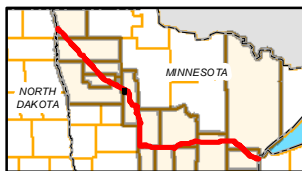
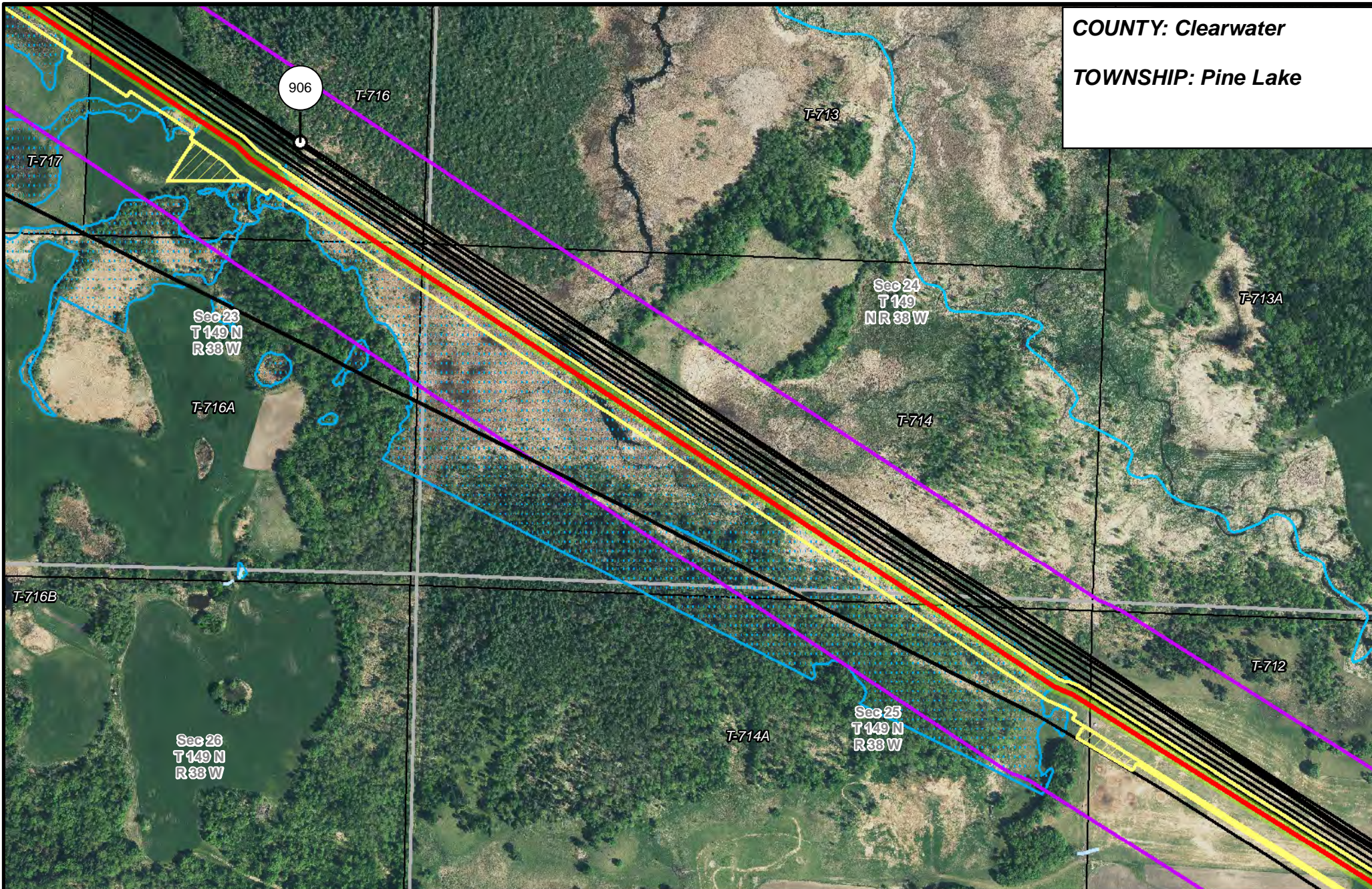
- |                       |                                |                      |                        |
|-----------------------|--------------------------------|----------------------|------------------------|
| PUC Designated Route  | Mile Post                      | Surveyed Waterbodies | Tract Boundary         |
| ROW                   | Temporary Workspace            | ESA                  | MN Section Boundary    |
| Line 3R Pipeline      | Additional Temporary Workspace | Surveyed Wetlands    | Township/City Boundary |
| Valve Location        | Existing Enbridge Pipelines    | NWI Wetlands         | County Boundary        |
| Enbridge Pump Station | Existing Electric Transmission |                      |                        |
|                       | Existing Third Party Pipelines |                      |                        |



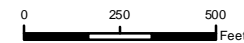
**LINE 3 REPLACEMENT  
PIPELINE ROUTE**

DRAWN: MLB CHECKED: --  
DATE: August 31, 2018 SCALE: 1:5,000  
Map 123 of 378

**COUNTY:** Clearwater  
**TOWNSHIP:** Pine Lake



- |                       |                                |                      |                        |
|-----------------------|--------------------------------|----------------------|------------------------|
| PUC Designated Route  | Mile Post                      | Surveyed Waterbodies | Tract Boundary         |
| ROW                   | Temporary Workspace            | ESA                  | MN Section Boundary    |
| Line 3R Pipeline      | Additional Temporary Workspace | Surveyed Wetlands    | Township/City Boundary |
| Valve Location        | Existing Enbridge Pipelines    | NWI Wetlands         | County Boundary        |
| Enbridge Pump Station | Existing Electric Transmission |                      |                        |
|                       | Existing Third Party Pipelines |                      |                        |



**LINE 3 REPLACEMENT  
PIPELINE ROUTE**

DRAWN: MLB CHECKED: --  
DATE: August 31, 2018 SCALE: 1:5,000  
Map 124 of 378

COUNTY: Clearwater

TOWNSHIP: Pine Lake & Leon

907

T-712

Sec 25  
T 149  
NR 33 W

T-710

Sec 30  
T 149 N  
R 37 W

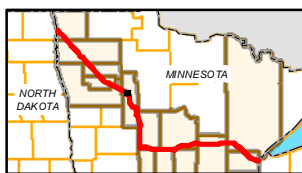
12.030.0300

MN-CL-016.300

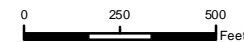
T-710A

T-709

Silver Creek



- PUC Designated Route
- ROW
- Line 3R Pipeline
- Valve Location
- Enbridge Pump Station
- Mile Post
- Temporary Workspace
- Additional Temporary Workspace
- Existing Enbridge Pipelines
- Existing Electric Transmission
- Existing Third Party Pipelines
- Surveyed Waterbodies
- ESA
- Surveyed Wetlands
- NWI Wetlands
- Tract Boundary
- MN Section Boundary
- Township/City Boundary
- County Boundary



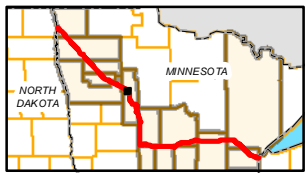
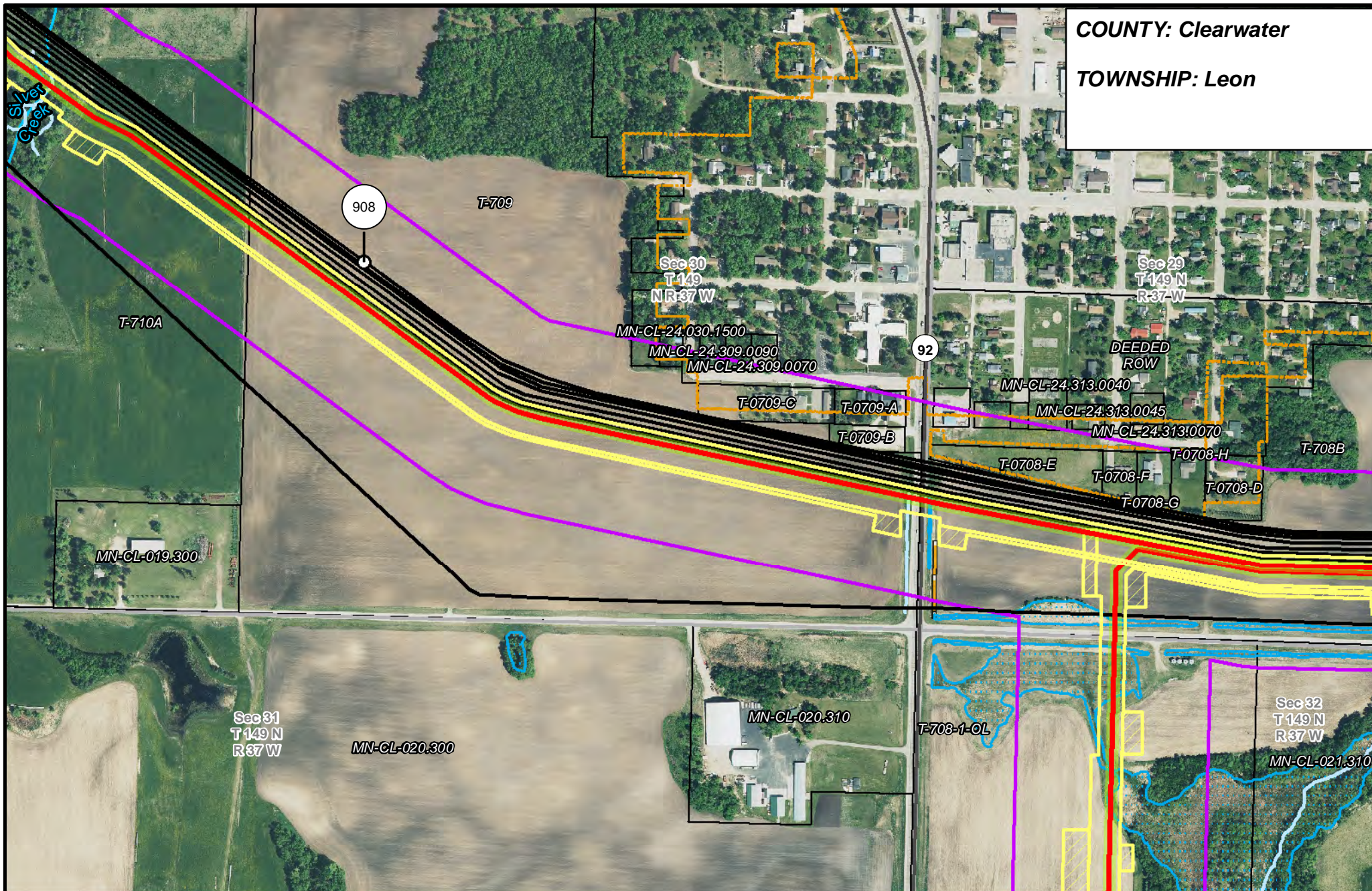
### LINE 3 REPLACEMENT PIPELINE ROUTE

DRAWN: MLB CHECKED: --  
DATE: August 31, 2018 SCALE: 1:5,000  
Map 125 of 378

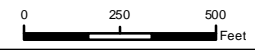


COUNTY: Clearwater

TOWNSHIP: Leon



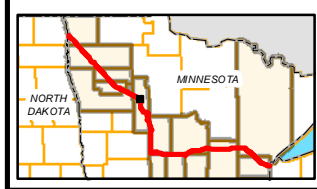
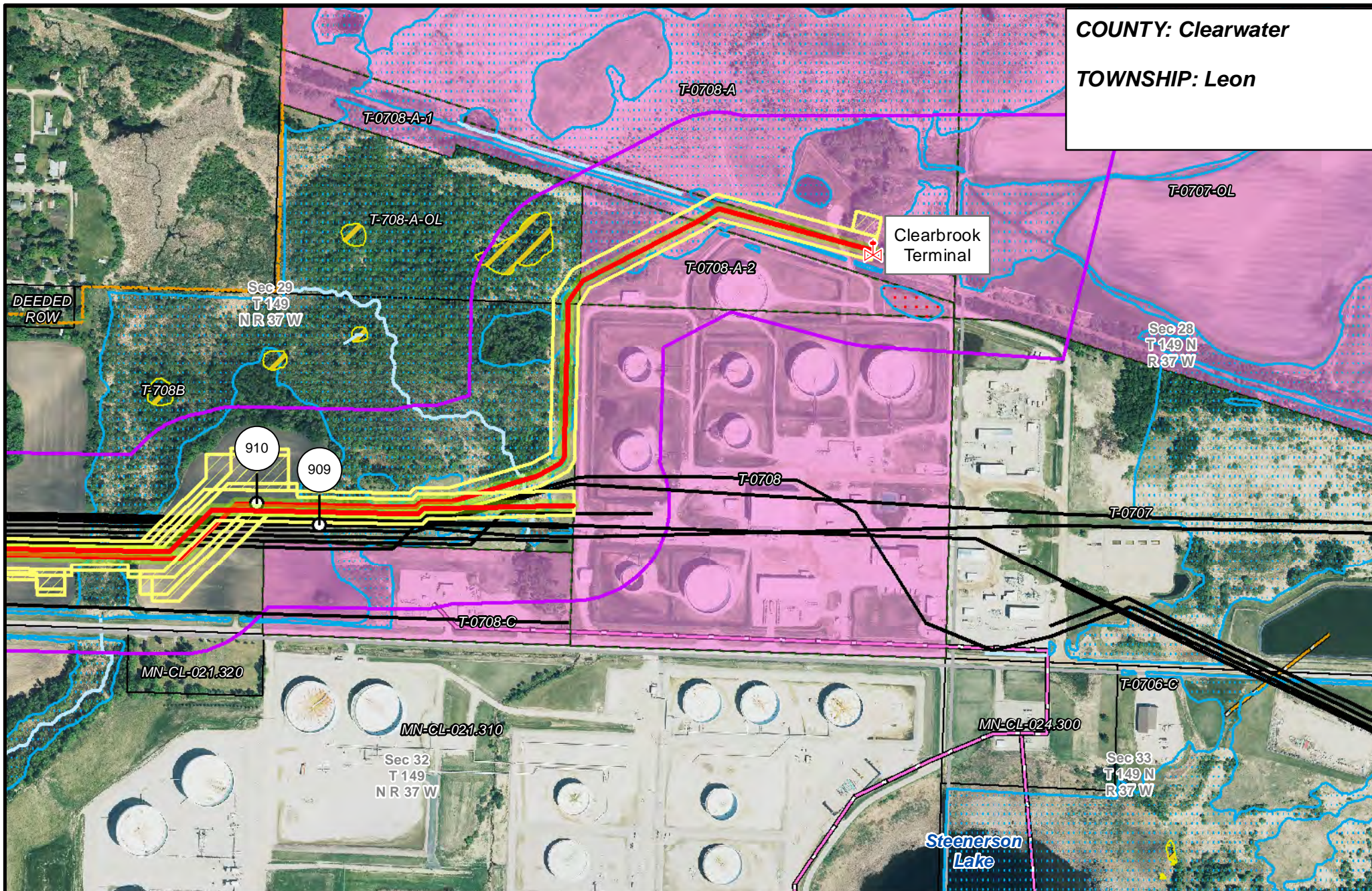
- |                       |                                |                      |                        |
|-----------------------|--------------------------------|----------------------|------------------------|
| PUC Designated Route  | Mile Post                      | Surveyed Waterbodies | Tract Boundary         |
| ROW                   | Temporary Workspace            | ESA                  | MN Section Boundary    |
| Line 3R Pipeline      | Additional Temporary Workspace | Surveyed Wetlands    | Township/City Boundary |
| Valve Location        | Existing Enbridge Pipelines    | NWI Wetlands         | County Boundary        |
| Enbridge Pump Station | Existing Electric Transmission |                      |                        |
|                       | Existing Third Party Pipelines |                      |                        |



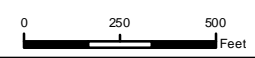
**LINE 3 REPLACEMENT PIPELINE ROUTE**

DRAWN: MLB CHECKED: ---  
 DATE: August 31, 2018 SCALE: 1:5,000  
 Map 126 of 378

**COUNTY:** Clearwater  
**TOWNSHIP:** Leon



- |                       |                                |                      |                        |
|-----------------------|--------------------------------|----------------------|------------------------|
| PUC Designated Route  | Mile Post                      | Surveyed Waterbodies | Tract Boundary         |
| ROW                   | Temporary Workspace            | ESA                  | MN Section Boundary    |
| Line 3R Pipeline      | Additional Temporary Workspace | Surveyed Wetlands    | Township/City Boundary |
| Valve Location        | Existing Enbridge Pipelines    | NWI Wetlands         | County Boundary        |
| Enbridge Pump Station | Existing Electric Transmission |                      |                        |
|                       | Existing Third Party Pipelines |                      |                        |

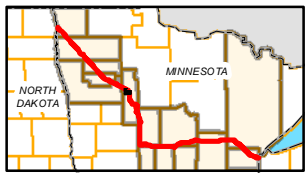
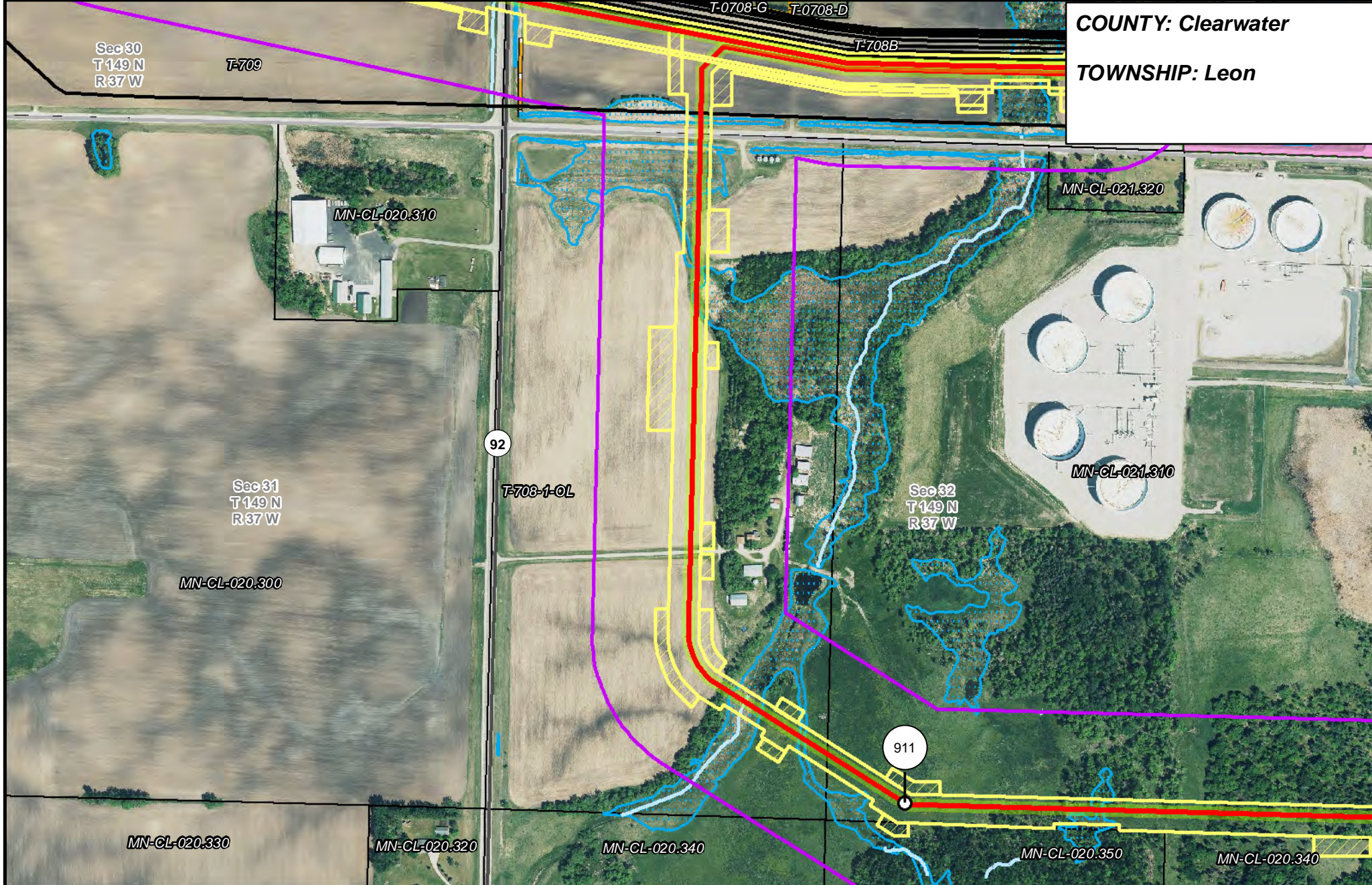


**LINE 3R REPLACEMENT PIPELINE ROUTE**

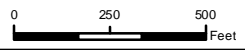
DRAWN: MLB      CHECKED: ---  
 DATE: August 31, 2018      SCALE: 1:5,000  
 Map 127 of 378

COUNTY: Clearwater

TOWNSHIP: Leon



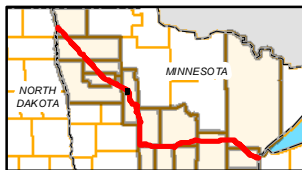
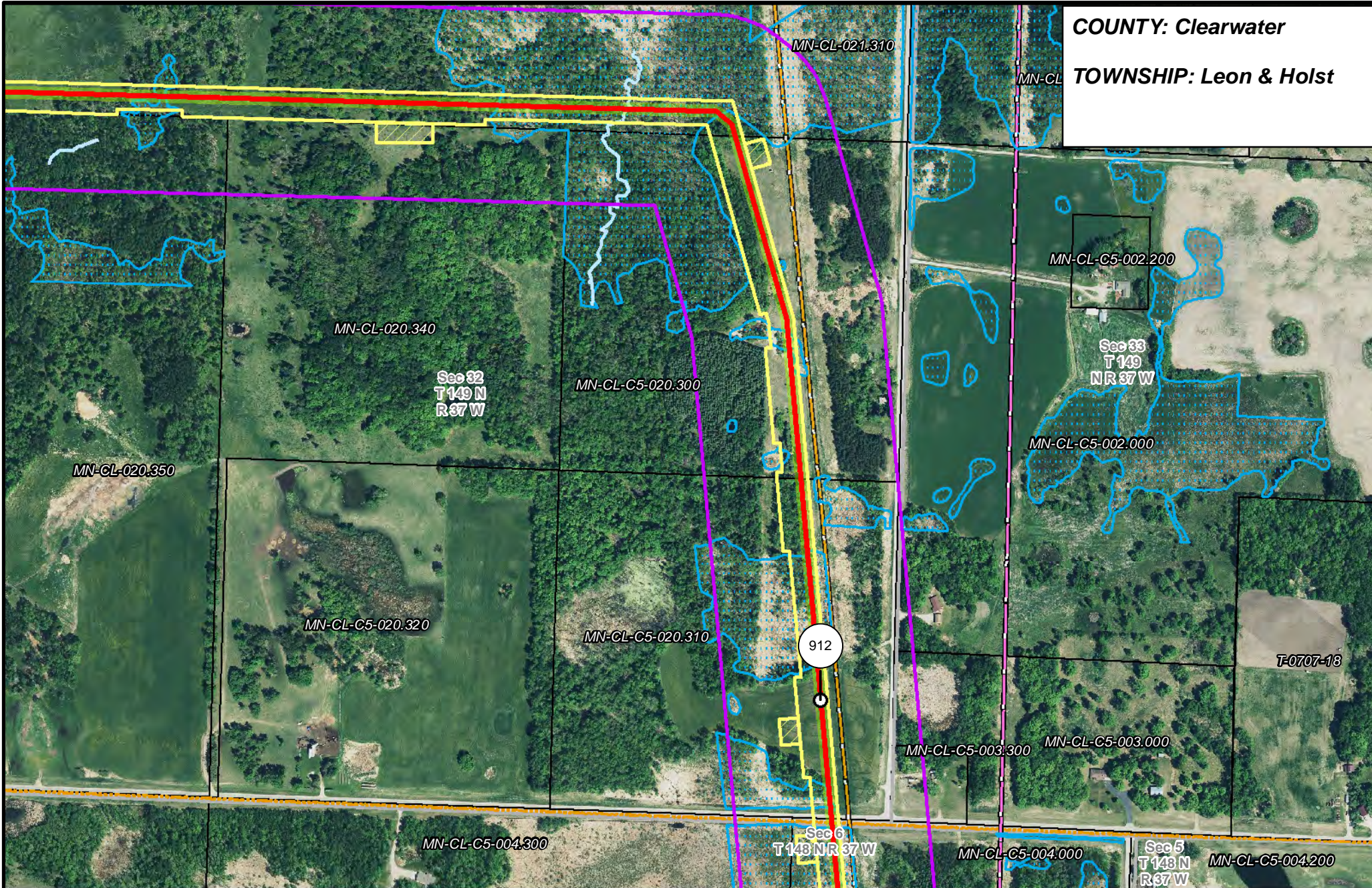
- PUC Designated Route
- ROW
- Line 3R Pipeline
- Valve Location
- Enbridge Pump Station
- Mile Post
- Temporary Workspace
- Additional Temporary Workspace
- Existing Enbridge Pipelines
- Existing Electric Transmission
- Existing Third Party Pipelines
- Surveyed Waterbodies
- ESA
- Surveyed Wetlands
- NWI Wetlands
- Tract Boundary
- MN Section Boundary
- Township/City Boundary
- County Boundary



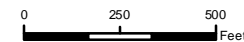
**LINE 3 REPLACEMENT PIPELINE ROUTE**

DRAWN: MLB CHECKED: ...  
 DATE: August 31, 2018 SCALE: 1:5,000  
 Map 128 of 378

**COUNTY:** Clearwater  
**TOWNSHIP:** Leon & Holst



- |                       |                                |                      |                        |
|-----------------------|--------------------------------|----------------------|------------------------|
| PUC Designated Route  | Mile Post                      | Surveyed Waterbodies | Tract Boundary         |
| ROW                   | Temporary Workspace            | ESA                  | MN Section Boundary    |
| Line 3R Pipeline      | Additional Temporary Workspace | Surveyed Wetlands    | Township/City Boundary |
| Valve Location        | Existing Enbridge Pipelines    | NWI Wetlands         | County Boundary        |
| Enbridge Pump Station | Existing Electric Transmission |                      |                        |
|                       | Existing Third Party Pipelines |                      |                        |



**LINE 3 REPLACEMENT PIPELINE ROUTE**

DRAWN: MLB CHECKED: ---  
 DATE: August 31, 2018 SCALE: 1:5,000  
 Map 129 of 378